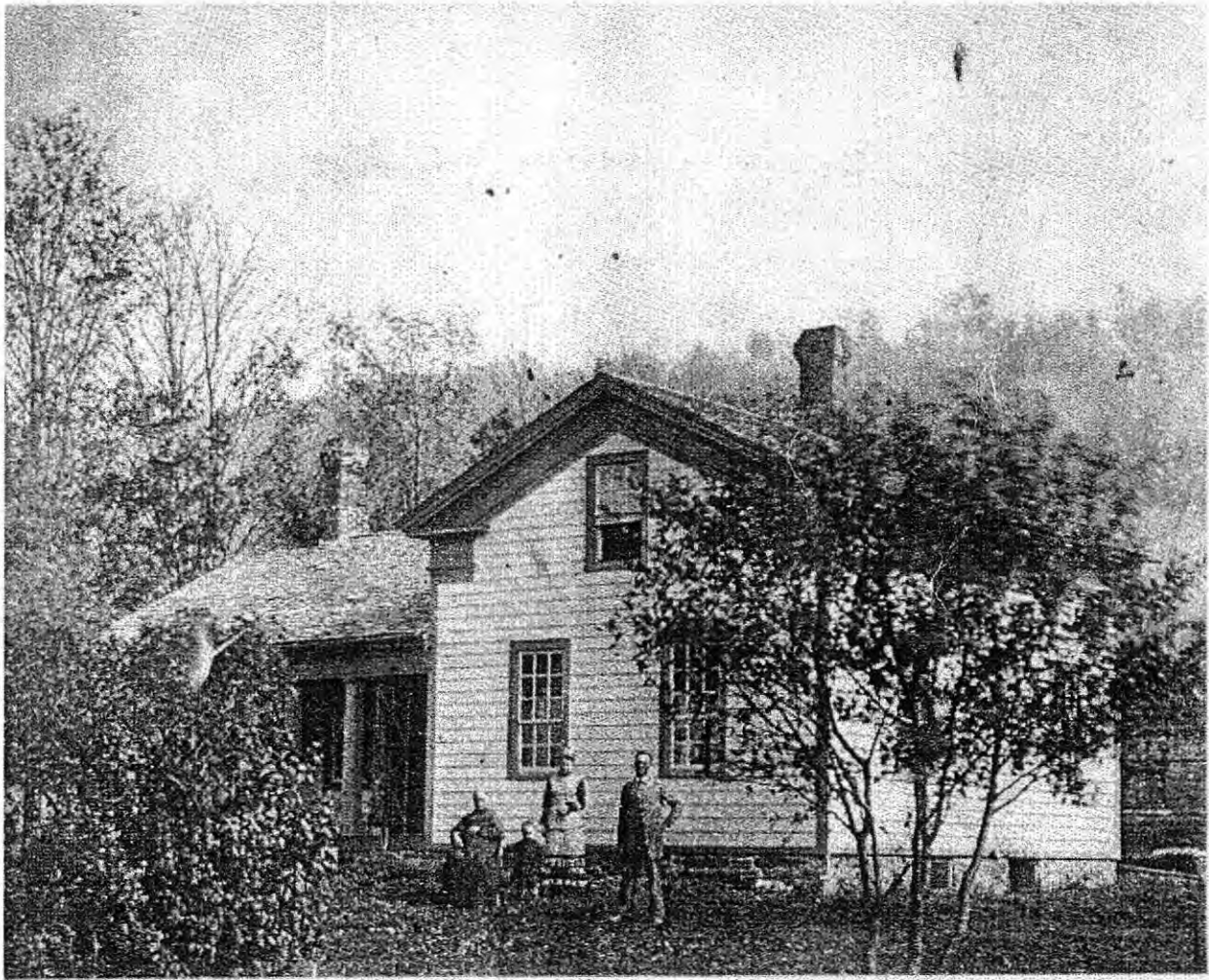


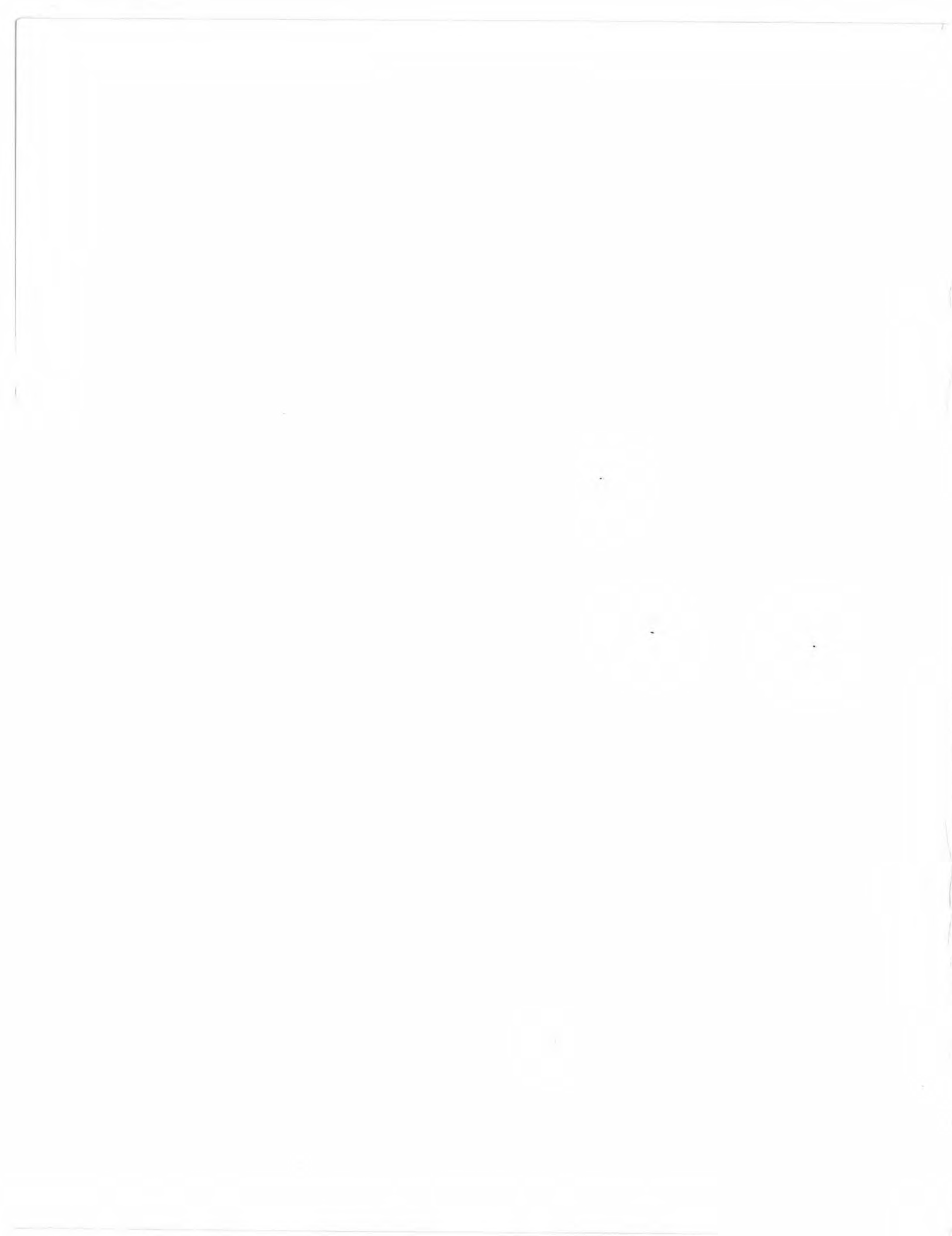


# SOULE NEWSLETTER

LIBRARY OF CONGRESS: No. C371, VOL. XXXVI NO. 1, JANUARY 2002



The John Soule house circa 1870. (In photo R-L, John Soule - standing (1818-1885); Ida Soule Clark - standing (1851-?); Unknown child of Ida Soule Clark's - standing; Charlotte Flint Soule - seated (1826-1894).)



**Soule Kindred in America, Inc.**

53 New Shaker Road, Albany, NY 12205-3615, 518.869.8368

Web Site: <http://www.homepages.rootsweb.com/~ruthhall/Soule/Sksoulekindred.html>

Tax ID – 23-725-3936

**Governance**

**President** – Norman W. Standish, 540 West Carroll St., Lanark, IL 61046. 815 493 2307, 800 468 2307.

[Standish@aeroinc.net](mailto:Standish@aeroinc.net), [Nstandish@aol.com](mailto:Nstandish@aol.com)

**1<sup>st</sup> Vice President** – Frank Flint Soule III, 1413

Dorothy Drive, Palatine, IL 60067. 847 991 7923  
[ffsoule1@juno.com](mailto:ffsoule1@juno.com)

**2<sup>nd</sup> Vice President** – Willis F. Soule, 114 Coronado

Road, West Columbia, SC 29170. 803 356 0702  
[soulewf@dot.state.sc.us](mailto:soulewf@dot.state.sc.us)

**Secretary** – Margaret A. Rocke, 2208 Nevara Ave.,

Vero Beach, FL 32960. 561 569 5268  
[mrocke@digital.net](mailto:mrocke@digital.net)

**Treasurer/Membership Secretary** – Betty-Jean Haner,

53 New Shaker Road, Albany, NY 12205-3615.  
518 869 8368

**Director 02** – Christine M. Hill, 2402 Kipling Pl.,

Hutchinson, KS 67502 316 663 7288  
[jhill@kscable.com](mailto:jhill@kscable.com)

**Director 02** – Geraldine Schlosser, 4645 N. 108<sup>th</sup> St.,

Wauwatosa, WI 53225. [gsowlesch@aol.com](mailto:gsowlesch@aol.com)

**Director 02** – Frank Flint Soule III, (See above)

**Director 03** – Carol Godreau, 33A Rita Dr., Bristol, CT

06010. 860 585 1710. [cgodreau@neuron.uchc.edu](mailto:cgodreau@neuron.uchc.edu)

**Director 03** – Barbara Johnston, 9 Gloucester Lane,

North Granby, CT 06060-0068. 860 653 7969  
4091 Oak Stone Dr., Douglasville, GA 30135 770  
489 7324 [fussfoot@aol.com](mailto:fussfoot@aol.com)

**Director 03** – Carol Soule, PO Box 1223, 257 Mystic

Rd., Bedford, Quebec, JO11AO, Canada.  
[carolandstan@yahoo.com](mailto:carolandstan@yahoo.com)

**Director 04** – Eldon W. Carey, 1200-B Chisholm Trail,

Salado, TX 76571-8705

**Director 04** – Christine L. Hornsleth, 3044 Waterford

Dr., Tallahassee FL 32308. 908-382-6680

**Director 04** – Margaret N. Turner, 3556 Greenwood,

Mar Vista, CA 90066

**Administration**

**Assistant Treasurer** – Harrison C. Leland, 225 Consaul

Rd., Albany, NY 12205. 518 869 6418

**Counselor** – James B. Tiffin, Tiffin & Tiffin, 160

Federal St., Boston, MA 02110. 617 330 9001

[TiffinVMF@aol.com](mailto:TiffinVMF@aol.com)

**Historian** – Charles J. Sowles, PO Box 329, St.

Francisville, IL 62460. 618 948 2286

[twolions@shawneelink.com](mailto:twolions@shawneelink.com)

**Keeper of Banners** – Norman Soule, 9011 S.E. 88<sup>th</sup> St.,

Ocala, FL 34472-3018

**Mayflower Historic Sites Committee** – (Sponsor Needed)

**Membership** – Betty -Jean Haner, (See Treasurer,

above) Robert Soules, 2099 Arroyo Dr., Riverside  
CA 92506-1659

**Newsletter Editor** – Frank Flint Soule III, (See above)

**Reunion Host 2002** – Barbara Johnston & Carol

Godreau, (See Above for both)

**Scholarship Committee** – Betty-Jean Haner and

Harrison C. Leland (see above), Betty Harris, 7711

Broadway St. #8B, San Antonio, TX 78209. 210

930 6252

**Webmaster** – Ruth E. Hall, 1128 Carrington St.,

Toledo, OH 43615-4161. 419 865 6472.

[ruthhall@worldnet.att.net](mailto:ruthhall@worldnet.att.net)



850-668-7832

## News from President Norman Standish

### Reunion 2002

Planning for the 2002 Convention is continuing by the Reunion Future Planning Committee. The initial investigation of New Bedford, MA has not proven to be satisfactory for the Convention. Sites in Connecticut are being studied. The site will be in Connecticut and will be announced as soon as arrangements can be completed.

### Budget Planning for 2003

When we meet at the 2002 Convention, the Budget for 2003 will be reviewed in detail, priorities established, and an approved plan approved. Much of the assets of the Soule Kindred in America, Inc. is held in designated accounts and not available for operating expenses. Therefore, a carefully prepared budget is very important. In order to facilitate this process it is absolutely necessary that each officer, director and appointed office submit a written budget of projected expenses to the treasurer, Betty-Jean Haner. The deadline for submitting budget proposals in August 1, 2002. This will allow our treasurer to compile and prepare an overall budget for approval at the Convention.

### Soule Kindred Website

Web Site: <http://www.homepages.rootsweb.com/~ruthhall/Soule/Sksoulekindred.html>

### Digitizing Kindred Index

As reported in the last Soule Newsletter by Bob Bishop, a project by Historian, Charles Jack Sowles, to digitize the Soule Kindred Indexes has been completed. Initial CD's have been circulated for comments and suggestions and work is continuing on developing a final version of this large resource database is being completed. Further information on this project can be found in the section on Historians Comments.

### Luke and Merle Soule Family Foundation Grant

An opportunity to apply for a grant of \$ 10,000 from the Luke and Merle Soule Family Foundation has evolved over the past year. The Foundation Administer, Luther Soule, has offered to work with our group to study a possible connection of Pilgrim George Soule to a "William de Soule" who signed a "Declaration of Independence" in Scotland in 1320. A copy of this document hangs on his office wall in San Antonio TX. Attempts to date to identify the mother or father of George Soule have not been fruitful. Charles Jack Sowles, Frank Flint Soule III and Norman Standish met, reviewed potential contributions Soule Kindred in America might be able to contribute to this quest, and developed a strategic plan of how this might be accomplished. Following is an outline of this plan which has been circulated to all Directors, Officers and outgoing Directors (2001) for comments, suggestions, and approval.

(Phase I.) To develop a clear understanding of the present activities in the United States on the genealogy of the George Soule family by contacting and developing a working relationship with the Five Generations Project on George Soule, The Society of Mayflower Descendants, developing a background on the "Declaration of Independence" document and using available websites and computer programs.

The Society of Mayflower Descendants has established a DNA study with John Skyes, Oxford University genealogy department. They are working with their members to establish a male "Y" factor which can be used in the University data base to design maps of concentrations of descendants in Great Britain. These would represent area for search for documents on George Soules forefathers. Once a program has been developed, males bearing the Soule (or other spelling) willing to provide a confidential DNA sample would be sought in the Soule Kindred in America group. A sample of at least 20 common names are required to establish a statistical base for a "Y" factor.

(Phase II.) To visit Oxford University to coordinate with their program and establish an account for the preparation and analysis of DNA samples. To establish a clear understanding of the information which will be developed. To identify a recognized genealogist on

**News From the President Cont'd.**

Great Britain who would be willing to work with us on a future program in 2003. Contact would also be made with The Sole Society (England).

(Phase III.) To utilize United States libraries, computer programs, and available web sites to build background information on Pilgrim George Soule.

Present Status: The review of the proposed project has been completed and approved by a majority of the Officers and Directors. Comments and suggestions have been incorporated into the proposal and the final document submitted to the Luke and Merle Soule Family Foundation. A final decision is expected by the end of the year. If successful the Historian would initiate work after the end of the year. No funds from the Soule Kindred in America treasury should be required.

**Publication of the Soule Newsletter**

Chuck Healy has done a wonderful job of putting together and publishing the Soule Newsletter in the past. Unfortunately he will not be able to continue this project. Frank Flint Soule III has taken on the additional role of Newsletter Editor to continue the important communication to our membership until we can establish a permanent staff. Helping him will be two assistant editors, Doug Detling and Anna Bristol. We welcome both and look forward to a productive and informative publication.

**Mayflower Historic Sites Committee**

Lee Manausa has chaired this committee working with the Society of Mayflower Descendants, but will not be able to continue. We appreciate the effort Lee has put into this work. This project is attempting to compile a listing of communities and sites that have been named after our Pilgrim forefathers. We are forming a new committee to undertake this important task. Hopefully, we can divide the country into sections by expanding the committee. If you would like to participate as a committee member or just to input information available to you please contact me. Two members have expressed interest and we plan to finalize the committee prior to the next convention.







Frank Flint Soule III, Editor

## *Editor's Corner*

At the start of the new year of 2002 I wish each one of you, health, wealth and long life.

The year of 2001, just ended, has been a tumultuous one. Our existence as a free nation has been challenged and tested. It is fortunate indeed that our National leadership has responded to this new challenge with determination, purpose and perseverance. Our nation has come together in a rebirth of Patriotism and devotion to the volunteering spirit in the same way our forebears did.

As an "armchair" historian and amateur genealogist my thoughts are drawn to similar National challenges that our ancestors faced. How well did they react to the crises of 1756, 1775, 1812, 1846, 1861, 1898, 1917, and 1941? We must be patient, logical and determined in our response separating as much emotion as possible from the equation.

Here is one reason why we should stop and consider our actions and their consequences. This excerpt is from "Rope's Ends" - Traditions, Legends and Sketches of Old Kennebunkport and Vicinity by Annie Peabody Brooks, Kennebunkport, Maine 1901. Pp. 48-51.

### "Dinah's Rock

So many times as has been our delight to walk the length of the main thoroughfare of this historical region, the invigorating breeze from the ocean prompting us, unconsciously, to hasten our footsteps, until as we draw near to the place of a tragedy of Indian days so unlike any ever known to the history of early times, just so many times do we, thoughtlessly, linger for an instant, as if impelled by invisible spirits, while we turn a regretful glance upon all that is seen of the well-known Dinah's Rock.

The fate of Dinah, the good squaw, is, indeed, harrowing to relate. During the summer preceding her murder, a settler, living not far from this quarter had allowed his little daughter to wander into the bushes near their house to gather her fill of the plentiful berries so tempting to childhood. The watchful eye of the parent, all unsuspecting of the danger lurking so near, was suddenly horrified to see a lithe savage spring from the underbrush, and before the agonized parent could lend any assistance the relentless hand of the assassin had buried the tomahawk, more than once, deep into the neck of his lovely child, and then rush away. Frenzied as he was over the loss of his child, he was yet calm enough to realize how fruitless would be the attempt of capture, so, kneeling by the prostrate

form of his child, he registered a vow to Heaven that henceforth the only pleasure life could have in store for him would be the ceaseless hunt of his savage foe, and he faithfully kept the sacred promise. Dinah had been prowling around for a number of days, unmolested by any; in fact she was always welcome, in a certain way, in the little colony. No one dreamed that Randall would include good old Dinah in his vengeance.

Only a while ago did the poor, broken-hearted man learn of the presence of the harmless squaw in the vicinity. Suffering as he was from a badly sprained ankle, he did not hesitate to set forth in haste for another victim towards reconciliation of his great loss. Something in the appearance of the white man caused her to take alarm, and she sped for the forest. She could have easily outstripped the man in his maimed condition, but for the fatal mishap of catching the side of her snow-shoe in the crevice in the ledge. Before she could extricate herself her pursuer had come up with her, and, giving deaf ear to her pleadings for quarter, he heartlessly brained her on the spot. For nearly two hundred years the ledge where this all occurred stood as a monument to commemorate the tragedy."

I have included this passage to remember that, in the past, we have rushed to judgment and violence in the grip of hate, hurt and anger and that if we are to learn any lessons from history we must contemplate the effects of our response.

I believe that our government is responding to this attack with humanity and calm direction so that the terrible events of 11 September 2001 can never be repeated.

My ancestor research attempts to include far more facts than the basic "vital statistics". I try, as many of you do, to determine what these people were really like in their daily lives. Some were fortunate enough to contribute to the success of our nation in public or military service. Others led quiet, low profile lives as farmers, merchants, and craftsmen and in the medical or legal professions.

I believe that the important function of the Soule Kindred newsletters is to provide information such as; reprints of wills, excerpts from publications, antique family photographs, family Bible transcriptions, etc. Of course current news of your families is no less important to the newsletters.

Like the newsletter editors before me I rely on your timely submissions to the newsletter to provide an interesting, informative and newsworthy publication. My e-mail "latch-string" is always "out" for your submissions. ([ffsoule1@juno.com](mailto:ffsoule1@juno.com)) My obligation is not to print any e-mail or correspondence in the newsletter without your express permission to do so. Of course many of you do not have electronic mail capabilities. In that case you should continue to send your information to our Treasurer, Ms. Betty-Jean Haner at Albany, NY or please feel free to send your information directly to me at 1413 Dorothy Drive, Palatine, IL 60067. Deadlines for submission to the newsletter will be March 30<sup>th</sup>, July 31<sup>st</sup>, September 30<sup>th</sup> & December 31<sup>st</sup>.



The John Soule home today on the Ridge Road, Pompey, Onondaga County, New York. According to Pompey Historian, this home was erected circa 1848.

## From the Treasurer...

B. J. HANER, TREASURER

SOULE KINDRED IN AMERICA, INC.

Jan. 2002

To: The Membership

From: B.J.

Re: Dues Structure

Some people have inquired about our Dues Schedule. What do the different Amounts mean.

Regular Member \$15.00 - This is basic dues covering cost of Newsletter.

Sustaining Member - A member who wishes to contribute a little extra help to the organization.

Patron Member - Prior to Oct. 2001, these moneys went into the Scholarship Fund. NOW because of a vote at the annual meeting, these funds go into the general fund.

The above are all annual dues.

Life Membership - A one time fee so that dues are no longer required. The money from Life Memberships prior to Oct. 2001 went into the scholarship fund. NOW because of a vote at the annual, this money also goes into the general fund. This plan is operational for one year and then the plan will be revisited.

518-869-8368

B.J. Haner



SOULE KINDRED NEWSLETTER, VOL. XXXVI, NO. 1 JANUARY 2002

**SOULE KINDRED IN AMERICA, INC.**

Betty-Jean Haner, Treasurer  
53 New Shaker Road  
Albany, NY 12205-3615

**Annual Report**

For Period June 1, 2000 to May 31, 2001

<b>Balance on Hand June 1, 2000</b>		<b>\$78,283.97</b>
<b>Receipts</b>		
<b>Operating Receipts</b>		
Dues	3,815.00	
Newsletter Sales	8.75	
Notepaper Sales	45.00	
George Soule Story	30.00	
Postcards	4.30	
Interest on Operating Funds	17.10	
<b>Total Receipts for Operations</b>		<b>5,920.15</b>
<b>Scholarship Receipts</b>		
Soule Kindred Annual Scholarship Appeal	260.00	
Life Memberships (designated for scholarships)	1,000.00	
Patron Memberships (designated for scholarships)	150.00	
Scholarship Interest	2,754.89	
<b>Total Receipts for Scholarships</b>		<b>4,164.89</b>
<b>Bequest of Col. John E. Soule</b>		
Interest on Bequest Account	1,491.34	
<b>Total Bequest Income</b>		<b>1,491.34</b>
<b>Total Receipts</b>		<b>11,576.38</b>
<b>Expenditures</b>		
<b>Operating Expenditures</b>		
Newsletters (4 issues)	4,970.35	
Newsletter (copying )including Newsletters for 5 Generation Project	80.41	
Office Expense (Treasurer, Membership Sec., Scholarship)	498.47	
Corporate Annual Fees	15.00	
Historian (Postage, Copies, etc.)no report	0.00	
Dues Refund (2 persons paid twice)	30.00	
Domaine Name Renewal	35.00	
2000 Reunion Expense	289.15	
<b>Total Operating Expenditures</b>		<b>5918.38</b>
<b>Scholarships</b>		
Col. John E Soule Memorial Scholarship	1,000.00	
George Standish Soule Memorial Scholarship	1,000.00	
<b>Total Scholarship Awards</b>		<b>2,000.00</b>
<b>General Society of Mayflower Descendants</b>		
5 Generation Project-from Bequest Account	1,000.00	
		<b>1,000.00</b>
<b>Total Expenditures</b>		<b>8,918.38</b>
<b>BALANCE ON HAND MAY 31, 2001</b>		<b>\$80,941.97</b>

**Soule Kindred in America, Inc.**

**Bank Account Balances**  
As of May 31, 2001

<b>Operating Accounts</b>		
1. Savings Account	638.85	
2. Checking Account	3,316.04	
<b>Total for Operating Accounts</b>		<b>3,954.89</b>
<b>Scholarship Accounts</b>		
3. CD 5 Generations #1	10,000.00	
4. CD 5 Generations #2	8,556.22	
5. CD Life Membership #1	21,149.14	
6. CD Life Membership #2	4,894.29	
7. CD Life Membership #3	1,556.54	
8. CD Scholarship Savings	4,660.79	
<b>Total for Scholarship Accounts</b>		<b>50,816.98</b>
<b>Bequest Reserve for Publications and Research</b>		
9. CD Bequest of Col. John E. Soule (Estate Acct.)	26,170.10	
<b>Total for Bequests Accounts</b>		<b>26,170.10</b>
<b>TOTAL OF ALL BANK ACCOUNTS</b>		<b>\$80,941.97</b>

All bank accounts are held in the Trustco Bank in Schenectady New York

Respectfully Submitted,

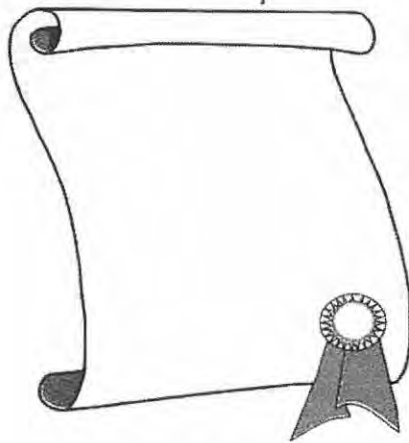


Betty-Jean Haner

## Scholarships

### THE COLONEL JOHN EDWARD SOULE

### MEMORIAL SCHOLARSHIP



Rebekah Corey, daughter of Ronald and Cecilia M. Bryant Corey, is the recipient of the Colonel John Edward Soule Memorial Scholarship.

Rebekah is attending Toccoa Falls College in Toccoa Falls, Georgia, majoring in early childhood development. She graduated in 3 years from Mt. Blue High School in Farmington, Maine.

While in high school, Rebekah has been active in orchestra and chorus. She also played on the school softball, basketball and field hockey teams. She was a member of the International Club.

Outside school, Rebekah has served on mission teams building sidewalks in Honduras, delivering needed supplies on Mt. Kilimanjaro and she spent six weeks helping to build foundations in India. She's been active in her church youth group, sings in the choir and works in the nursery.

Her Guidance Counselor says, "All this has resulted in her passion to want to embrace young kids and love them. She wants to give hope and strength to people's lives."

One of her social studies teachers depicts her as "very personable and supportive of people's feelings. She'd be a teacher you'd want your kids to have."

## Scholarships Cont'd.

### GEORGE STANDISH SOULE MEMORIAL SCHOLARSHIP

#### RECIPIENT



Alexis J. Hoag of Huntington Beach, California is the daughter of Candice Ellen Hoag and Zac Mbuya. She is a graduate of Huntington Beach Union High School District, Marina High School. She is the recipient of the George Standish Soule Memorial Scholarship.

Alexis is a sophomore in Yale College of Yale University. She is in the Liberal Arts Program with a special interest in American Studies. Following her graduation from Yale, she plans to earn a law degree. She says in her goals statement, "I have dreamed of winning over a jury with my persuasive arguing techniques and that dream has never faltered. A trip to California Girls State also encouraged me to seek public office. While there, I was elected to the State Assembly. There I debated controversial issues such as abortion, education and welfare reform. It was there that I found a love for government. Serving others for a greater purpose has always appealed to me and I cannot wait to see what the future holds."

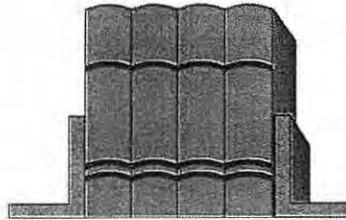
In college, Alexis participated in a wide variety of activities including democratic club, Freshman class counsel, and Yale model congress. In leadership positions, she was freshman class council, chairman of communications, and budget committee chair.

While in high school, she participated in many activities; including National Honor Society, Key Club, Intercultural Club, Homecoming committee, Youth in Government, Yearbook Staff, Prom committee as well as Varsity Cross Country Soccer, Track and Field. As a participant in these activities, she received many awards.

Her English teacher says of Alexis, "With Colin Powell as our new Secretary of State and Hilary Clinton as a new senator of New York, may I nominate Ms. Alexis Hoag as America's newest ambassador of Sociability, Equality and Fraternity. Her infectious smile and Puritan work ethic will make us all feel proud to be Americans. Alexis is a leader an organizer and a mentor to her peers."

## Scholarships Cont'd.

### AVIS ROBBERSON HANER MEMORIAL SCHOLARSHIP AWARD



Marcus Corey of E. Wilton, Maine is a graduate of Mt. Blue High School in Farmington, Maine. He is the son of Ronald and Cecilia M. Bryant Corey..

Marcus, the recipient of the Avis Roberson Haner Memorial Award, is attending Crown College in St. Bonifacius, Minnesota. He is majoring in Business Administration.

During his high school years, Marcus was active in sports; having played football, baseball and he was on the track team. As football captain, he initiated an activity with his football team where, before each home game, the team went to nursing homes to talk with the residents. This was a way for people to connect with another generation and learn about each other and find similarities to celebrate. His guidance counselor says of him, "Marcus is a wonderfully talented, caring and energetic young man. He is positive, outgoing and a leader."

He participated in band and chorus for all 4 years of high school and was in the all state chorus. He was class president three years, treasurer for one year, and president of International Club for three year.

He also was active in youth programs and provided special music at church. Marcus worked in a drug abuse program for younger children and served as a lifeguard at summer camp for 3 years. He was also an active snowboarder and gave private snowboard lessons to young children.



**Soule Kindred in America Inc.**

## **Announcement !!**

### **Immediate Release**

Soule Kindred in America announces the immediate release of its:

Soule Kindred Index-(Millenium Edition) on CD-Rom:  
-----

This edition also includes the associated indices: Soule Spouses Index and the Soule (Other Surname) Index and has been printed in two popular computer software versions-Microsoft Word/Words and Word Perfect, with all the latest corrects/addenda through December 2000. It is also available in printed "Hard-Copy" version for those of us who are non-computer users.

**Price: \$25.00--(CD or Hard Copy)**

Order From:  
Ms. Betty Jean Haner  
53 New Shaker Rd.  
Albany, N.Y. 12205-3615



Soule Kindred in America Inc.

## Soule Kindred Index

### on CD-Rom (Millennium Edition)

#### An Introduction:

For several years, the SOULE KINDRED INDEX with it's associated Indices (The SOULE SPOUSES INDEX and the SOULE (OTHER SURNAME) INDEX) have been some of the principal tools of genealogical research used by our Historians Office in initial research, performed for persons enquiring into the resources of the Soule Kindred in America. These indices constitute a large, tabulated "Data Base" which is a summarized version of several files of genealogical records which have been developed by Soule Kindred over the past (approximately) 50 years, and which are the combined research efforts of numerous persons "in the field" and of several past Soule Kindred in America Historians. They also contain research documents from other sources such as the General Society of Mayflower Descendents; plus Vital Records and Federal Censuses from numerous states.

The Soule Kindred Index was published in pamphlet form in 1984, with its companion indices published at later dates and several corrects/addenda supplements have been issued since that time. Those supplements have been incorporated into the original documents as they were issued and were also published as separate items of interest in our Quarterly Magazine, the "Soule Newsletter." This CD-Rom version of the Soule Kindred Indices, is an attempt to accommodate those Soule Family Researchers who are computer users and to at the same time

bring the indices up to date with additional correcta/addenda which has been discovered over the past (approximately) 8 years.

---

## Contents of the Soule Kindred Index-Cd Rom (Millennium Edition)

---

### Contents of Files Written in Microsoft “Word” Software- (Word Version 7.0).

---

<u>FILE NAME</u>	<u>SOFTWARE</u>	<u>DESCRIPTION</u>
CONTENTS.DOC	MS WORD 7.0	CD-ROM Table of Contents
COVER LETTER.DOC	“	A Word About This CD-Rom
REFERENCE LIST.DOC	“	Reference List of Correcta/Addenda Yr. 2000 (Millennium Edition)
8692SKDX.DOC	“	Dr. Milton TERRY-Original Files, Plus Supplements
92SKONDX.DOC	“	Original Soule (Other Surname) Index
SKSPO.DOC	“	Original Soule Kindred Spouses Index
2KSKDXA.DOC	“	Soule Kindred Index-2000 (Alphabetical Listing)**
2KSKDXN.DOC	“	Soule Kindred Index-2000 (Numerical Listing)**
2KSKONA.DOC	“	Soule (Other Surname) Index 2000 (Alphabetical Listing)**
2KSKONN.DOC	“	Soule (Other Surname) Index-2000 (Numerical Listing)**
2KSKSX.DOC	“	Soule Kindred Spouses Index-2000

**NOTE \*\*: By the incorporation of all corrects/addenda into the body of these files, they were corrupted as alphabetical files, thusly the easiest method for correcting that corruption is to make a duplicate file for each one -(i.e.: and alphabetical and a numerical one.)**

**Contents of Files Written in Corel/WordPerfect Software  
(WordPerfect Version 6.0)**

CONTENTS.DOC	Word Perfect V 6.0	CD-ROM Table of Contents
COVER LETTER.DOC	“	A Word About This CD-Rom
REFERENCE LIST.DOC	“	Reference List for 2000 Additions/Corrections
8692SKDX.DOC	“	Dr. Milton TERRY-Original Files, Plus Supplements
92SKONDX.DOC	“	Soule (Other Surname) Index- Original Files
SKSPO.DOC	“	Soule Kindred Spouses Index- Original Files
2KSKDXA.DOC	“	Soule Kindred Index-2000 (Alphabetical Listing)
2KSKDXN.DOC	“	Soule Kindred Index-2000 (Numerical Listing)
2KSKONA.DOC	“	Soule (Other Surname) Index- 2000 (Alphabetical Listing)
2KSKONN.DOC	“	Soule (Other Surname) Index- 2000 (Numerical Listing)
2KSKSX.DOC	“	Soule Kindred Spouses Index- 2000

---

SKDXROM.NTP	NEATO	CD-Rom Label
-------------	-------	--------------

As can be seen above, these files are written to accommodate the computer user who is more adept at the use of Word Processing Software with PC type computers. They are not however written for those who may use Apple type computers. There may be those Apple Computer users who may have software which will convert these files to Apple use.

In the past, questions have arisen about the reliability and accuracy of these indices, and admittedly, just as in all printed matter such as publication of these databases; they are subject to discrepancies in interpretation of source material. As an overall evaluation of the Soule Kindred Indices, this author has used them extensively and has found them to be highly effective for the beginning research “leads” required when starting any new family research project. The advantage to computerizing them, is that of easy “upgradability”, allowing for additions and corrections as research into George Soule’s descendent lines progresses. In addition to the obvious speed of computer manipulation of these files a second advantage exists: Even moderately adept computer users may now easily perform a “backward generational search” in which he/she may alphabetically determine the name and ancestral number of a parent, and then do a numerical search to determine all the sons and daughters of that parent. This feature was conceivable in the original indices, but not however, very practicable since it entailed a visual search of 135 pages of printed columnar material.



421 KENILWORTH AVE  
GULF BREEZE, FL. 32561-448  
SEPTEMBER 21, 2001  
(850) 932-9605

BETTY-JEAN HANER, TREASURER  
SOULE KINDRED IN AMERICA  
53 NEW SHAKER ROAD  
ALBANY, N.Y. 12205-3615

DEAR MS. HANER:

SINCE I AM A MEMBER OF THE SOULE KINDRED IN AMERICA, INC.,  
I AM ENCLOSED MY ELIGIBILITY FOR MEMBERSHIP TO THE  
SOCIETY OF MAYFLOWER DESCENDANTS WHICH RECENTLY  
WAS APPROVED.

- |                       |                                                               |
|-----------------------|---------------------------------------------------------------|
| 1. GEORGE SOULE       |                                                               |
| 2. JOHN SOULE         | MARRIED REBECCA SIMMONS                                       |
| 3. MOSES SOULE        | MERCY SOUTHWORTH                                              |
| 4. BARNABUS SOULE     | JANE BRADBURY                                                 |
| 5. BARNABUS SOULE     | JANE DENNISON                                                 |
| 6. ENOS SOULE         | SALLY PRATT                                                   |
| 7. ENOS CORYDON SOULE | LOUISA GORE                                                   |
| 8. SARAH HAIDEE SOULE | HENRY EDMUND BOTHFIELD                                        |
| 9. THEODORE BOTHFIELD | VIOLA MAE CLARK                                               |
| 10. ROBERT BOTHFIELD  | 1. HELEN AUDREY MARSH<br>2. VIRGINIA DUTTON (WILLIS) CHANDLER |

THIS INFORMATION MAY BE OF INTEREST TO OTHER  
SOULE KINDRED IN AMERICA, INC. MEMBERS.  
I AM AVAILABLE TO GIVE FURTHER INFORMATION  
WHEN REQUESTED.

SINCERELY YOURS,

*Robert Bothfield*  
ROBERT BOTHFIELD

## Buchholz/Soule Ancestry

Sp2 P 1

December 12, 2001

Dear B.J.

Thank you for sending my dues notice for continuing my membership in the George Soule Society. Enclosed is my check for \$15.00 which should cover the year 2002.

You asked if 2001 had brought forth any more George Soule descendents. I am pleased to answer in the affirmative. Barron Brant Buchholz born 7-02-2001 and Jarrett Jason Buchholz born 11-19-2001 are two more of my great grandchildren bringing the total to 6 with two more on the way. These two very young men are of the 15th generation from George Soule. My lineage from George Soule is as follows: First I should say that I am Elizabeth Spaulding Buchholz of the 12th generation:

- 1) George Soule-Mary Bucket
- 2) George Soule-Deborah ?
- 3) William Soule-Hannah ?
- 4) George Soule-Lydia Howland
- 5) Benjamin Soule-Abigail Howland
- 6) Isaac Soule-Abigail Porter
- 7) DeAlanson Soule-Lois Bragg
- 8) Solomon Soule-Lucinda Alger
- 9) Heman Soule-Emma Achilles
- 10) William Gustin-Edith Achilles
- 11) Elmer Spaulding-Ella Gustin
- 12) Eugene Buchholz-Elizabeth Spaulding (me)
- 13) Steven Buchholz-Sandra VandeZande
- 14) Brant Buchholz-Cheri Bille
- 15) Bryce Buchholz 6 years old
- 15) Blake Buchholz 4 years old
- 15) Barron Buchholz 6 months old
- 14) Jason Buchholz-Rhonda Katsma
- 15) Jaedon Buchholz 1 year old
- 15) Jarrett Buchholz 1 month old
- 13) William Buchholz-Famela Graham
- 14) Benjamin Buchholz-Angela Kannenberg
- 15) Wesley Buchholz 1 year old.

We do have some other potentially interesting items to contribute to the Soule quarterly publication.

1. Emily Buchholz, who received a scholarship from the generosity of your scholarship group has finished her four years of pre-dental work at the University of Minnesota, and will begin Dental School next. She not only had a good scholastic record during her pre-dental years but also played four years on the woman's ice hockey team. 2) coincidentally, her younger sister Bridget also played on a competing ice hockey team-University of Wisconsin. My husband and I and other family members attended one or more of these U of Wis vs U of Minn when these sisters played

## Buchholz/Soule Ancestry *ca.*

against each other. We were fortunate to be able to get a photo of them, copy included.

3. Krista Buchholz was awarded a four year scholarship to the University of North Carolina at Chapel Hill for volleyball. She did very well and I am including a photo of her that the people of the Univ of NC thought was appropriate to be put on the annual program for this year. She is expecting to be a law school student back here in Wisconsin, closer to home.

4. Another granddaughter, Eliza Richardson, has finished her undergraduate work at Princeton and is now expecting her PHD at MIT in the spring of 2002. She is majoring in Geophysics and has spent at least two periods at the bottom of the diamond and gold mines in South Africa. She and her husband Chris Marone both have positions teaching at Penn State.

Sincerely, *Betty Buchholz*

Elizabeth Buchholz 12th generation

Sisters play against each other -



Emily Buchholz  
Soule Kindred Scholarship  
Recipient grad of  
Univ. of Minnesota

Bridget Buchholz  
Univ. of Wisconsin

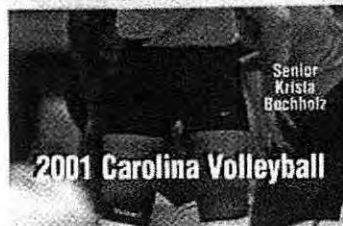
Krista Buchholz  
Univ of No. Carolina



*The Place to Be at UNC!*

- ▲ Internet connections for every resident
- ▲ Great location — adjacent to campus and Franklin Street
- ▲ Diningtime™ from breakfast through dinner

University Square  
370-4500  
[www.granvilletowers.com](http://www.granvilletowers.com)



## HONORABLE NATHAN SOULE (1790-1860)

December 20, 2000 – Sandra M. Sharp, Compiler

The following are notes accumulated over the past few years covering the life and times of Honorable Nathan Soule, easily one of the most prominent figures in my ancestry. It is clear that Nathan was a man who led a life brimming with activity.

I dedicate the following compilation to my beloved grandfather Luther L. Sharp, Sr., great, great, great grandson of Honorable Nathan Soule.

**Honorable Nathan Soule:** Born August of 1790, in Dover, Dutchess Co., New York, to Lattan (Lattain, Lattin, Latten) Soule and Lydia Leech. Nathan was a direct descendent of George Soule, Pilgrim who came to America on the Mayflower, also a signer of the Mayflower Compact. Nathan married Christiana (Christina) (?) in Danube, Herkimer County, New York. Christiana was born June 22, 1791 and died after a brief illness on April 2<sup>nd</sup>, 1853 in Clay, Onondaga County, New York. Nathan died on January 9<sup>th</sup>, 1860, at his residence on Morgan Road, Clay, Onondaga County, New York. Both are buried in the Pine Plains Cemetery – also known as the Euclid Cemetery – in Clay (Euclid), New York.

“It becomes evident upon researching Nathan that he was an ambitious man, who quickly rose to political aspirations. Nathan seemed to be a very prominent man in Montgomery and Onondaga Counties. Qualities he seemed to impress upon his children. He was described as a man of marked characteristics. His life was one of great activity not only in private, but in the public station. He left a character without reproach.” “Judge Soule was a man of strong mind, kind and conciliatory in manner and friendly in his intercourse with his townsmen and their common law adviser and all their difficulties a peacemaker no lawyer ever located in his town.”

From a letter written by Charles Soule of Grand Haven Michigan, to Mrs. Jane Smith on August 13, 1914 – Topic was Ridlon: “There are a lot of people in the country of the name Soule and they all seem to be descended from this man George Soule of the Mayflower. There are some rich and prominent people of our family who are willing to pay considerable money for a family history and he (Ridlon) got track of me somehow and I was the only one who could give information in regard to the descendants of Lattan (Latin) Soule descended from the original George and who lived in Dutchess County, New York over 100 years ago. This Latin Soule was my grandfather, father of Clement, Nathan, Ambrose Latin, Myron, Ephraim Leech and Benjamin, my father and uncles most of whom you remember. There were three sisters Aunt Mary Johnson, Aunt Sally Ann Quackenbush, and another aunt whose name I don’t remember. Uncle Leech died at a little past 50, and father at 56, Uncle Nate lived to be older, about 70 as I remember. Uncle Ben was much older, almost 90.”

### **Parents of Nathan Soule:**

Latten (Latin, Lattain, Lattan) Soule was born on August 23<sup>rd</sup>, 1763 in Beekman’s Precinct, Dutchess County, New York. He married Lydia Leech about 1785 in Dutchess County, New York. Latten died in 1828, in Salina



***Honorable Nathan Soule Ctd....***

(Clay), Onondaga County, New York. Lydia Leech was born circa 1764 in Dover, Dutchess County, New York.

**Siblings of Nathan Soule:**

1. Ambrose Lattan Soule - born June 26<sup>th</sup>, 1801 or May 28, 1801 (According to the family bible pages), in Dover, Dutchess County, New York. He married Ruth Paddock Brown either on 3/18 or 10/3/1824 in DeRuyter, NY – the family bible suggests they were married on March 18<sup>th</sup>. He married secondly, Sophia Everest in 1851. He died June 24<sup>th</sup>, 1857 in Muir, Michigan.
2. Ephraim Leech Soule – born 1803, most probably in Dutchess County, New York. He married Abigail Kinney (Kinne). Ephraim was a Botanic Physician, and was founder of the Oriental Sovereign Balm Company. Ephraim died October 24<sup>th</sup>, 1856, and is buried in Oakwood Cemetery, Syracuse, Onondaga County, New York.
3. Mary Soule – born 8/28/1792 in Dover, Dutchess County, New York. She married Andrew Johnson. She died April 1<sup>st</sup>, 1833. When she died, Andrew married Mary Griffin, Widow of Clement Soule (Mary's brother.)
4. Clement Soule – born January 24, 1789. He married Mary Griffin. He died August 2<sup>nd</sup>, 1828 and is buried in Pine Plains Cemetery, Clay, Onondaga County, New York.
5. Myron Soule – born circa 1806. He married first Sarah Sophia Ives, secondly married Anna Carrington Ives Smith (widow). Myron died during the “wartime” at age 56 or 57.
6. Benjamin Soule – born circa 5/10/1812. He married Rhoda (?). Benjamin died circa 1902. Benjamin was thought to be a “hopeless invalid”. A wing was built onto Myron's home in Ohio so that Benjamin could reside there. Where they had a hard life, he and Rhoda made a good life and Benjamin ended up outliving all of his siblings.
7. Sally Ann Soule – Married (? Peter) Quackenbush.

Possible other siblings were Harriet Soule & Emeline Soule?

**Children of Nathan And Christiana Soule:**

1. Polly Soule – born probably in 1808 in Montgomery County, New York. She married “Mr. Riggs”. Polly died after 1860 most probably in Michigan where they had removed to.
2. Harvey L. Soule – born August 1, 1810, probably in Montgomery County, New York. He married Matilda Smith. Harvey died December 14, 1889, probably in Clay, Onondaga County, New York. Both Harvey and Matilda are buried at Pine Plains Cemetery in Clay, Onondaga County, New York.
3. Harriet Soule – born 1812, most probably in Montgomery County, New York. Harriet married “Mr. Kinney” (Kinne). She died after 1860.
4. John Soule – born October 14, 1814 at Fort Plain, Montgomery County, New York. John married Laura A. Thompson. John died on June 2, 1884 in Clay, Onondaga County, and is buried at Pine Plains Cemetery, Clay, Onondaga County, New York.

***Honorable Nathan Soule Ctd....***

5. William Henry Soule – born probably in Montgomery County, New York. John married Nancy Miller. He died before 1860, his tombstone is worn, and has January 16, 18?8 as a date. Elsewhere his death date is listed as January 16, 1851. Both John and Nancy are buried at Pine Plains Cemetery, Clay, Onondaga County, New York.

6. Lucinda Soule – born 1816, probably in Montgomery County, New York. She married Ansel West. It was Lucinda and Ansel's granddaughter who knelt down and prayed for Nathan in 1855 – touching him so profoundly (see below). Lucinda died after 1860.

7. Nathan Soule, Jr. – born August 20<sup>th</sup>, 1821, most probably in Montgomery County, New York. He married Betsy (?). Nathan died April 7<sup>th</sup>, 1887, and is buried at Pine Plains Cemetery, Clay, Onondaga County, New York.

8. Andrew J. Soule – born April 24<sup>th</sup>, 1818 in Montgomery County, New York. Andrew married Helen (?) and married Julia Crandall – who was from another influential Onondaga County family (Hosea Crandall). Andrew was a Sheriff for Onondaga County. Andrew died on April 18<sup>th</sup>, 1880. Both he and Julia are buried in Pine Plains Cemetery, Clay, Onondaga, New York.

9. Lydia Soule (My ancestor) – born 1822 in Montgomery County, New York. Lydia married Freeman Snook circa 1840 in Montgomery County, New York. Lydia and Freeman had residences in Liverpool, Onondaga County, and in Oswego County, New York. Lydia died August 3<sup>rd</sup>, 1905 in Oswego County, New York. Both she and Freeman are buried at Pine Plains Cemetery, Clay, Onondaga County, New York.

10. Rhoda Soule – born probably in Montgomery County, New York. She died after 1860.

11. Alfred Soule – born 1825, probably in Montgomery County, New York. Alfred married Mary (?). Alfred is listed in the 1850 US Military Census. He died November 16<sup>th</sup>, 1887, and is buried in Pine Plains Cemetery, Clay, Onondaga County, New York.

12. James O. Soule – born 1820 in Montgomery County, New York. James married Betsy (?) who was listed in Nathan's will as being primary care giver of Nathan after the death of Christiana in 1853. James died after 1860.

“Early in life, Nathan's father “Clement” (This is Lattan – who I have seen referred to on occasion as Clement) moved the family from Dover, Dutchess County, New York to Danube, Herkimer County, New York. There he married Christiana. Soon after their marriage, they removed to Fort Plain, Montgomery County, New York. It was there that Nathan began his public life. He filled successively the office of Justice of the Peace, under Sheriff, Supervisor, Canal Superintendent, Member of Legislature, Judge of County Court and Representative in Congress.”

Nathan served his country as a sergeant, when he fought in the War of 1812.

1830: A Nathan is listed as a mortgager to GG Young Mortgagee and another mortgage in Cicero, Onondaga County, New York.

1831-1833: “At an early day in the history of canal navigation, he was superintendent of the section passing through the county of Montgomery where he then resided. Subsequently he represented the Montgomery

***Honorable Nathan Soule Ctd....***

district in Congress for a single term during which the Bank Bill was vetoed by General Jackson. A firm friend of the old hero, no man in the House of Representatives stood firmer in support of the policy than Judge Soule." A reference made to Nathan's term in Congress – "This 1834 painting of the City of Washington shows in the distance the old flat dome of the Capital Building as it was when Congressman Nathan Soule of New York served in the 22<sup>nd</sup> Congress from 1831-1833." "Soon after the expiration of his term in Congress, Judge Soule removed to Onondaga County and settled on the farm where he died."

1831: In the hamlet of Euclid (or Clay Corners) among its earliest settlers was Latin Soule (father of Judge Nathan Soule). Judge Nathan Soule came to Euclid from Minden, Montgomery County, New York in 1831.

Conflicting reports have been found as to when Judge Nathan Soule actually did come to reside in Onondaga County, New York. There are evidences of a Nathan Soule making land transactions in Cicero, Onondaga County, New York in 1831. However, it is unclear as to whether or not this is Judge Nathan Soule. The first clear evidence of his residence is in fact 1833 when he and Christiana are listed in land transactions in Clay. It is my opinion that Nathan had been to the area during the time between 1831 and 1833, but he did not actually settle in the area until 1833.

"When in Onondaga County he was town supervisor, a judge of the County Court, a member of the legislature for two terms and an extensive contractor on the Chenango Canal."

1832: "The Baptist Church and society met at the house of Japheth Kinne, the place of public worship, December 18, 1832. Horatio Warner, not being present, Seth O. Warner and Darius Kinne appointed to preside and voted that we be known forever hereafter by the name of the 1<sup>st</sup> Baptist Church and Society in the Town of Clay, Onondaga Co. We certify the above are the minutes of our proceedings given under our hands this 18<sup>th</sup> day of December, 1832 signed Seth Warner, LS

Euclid Methodist Church First Trustees: Honorable Nathan Soule.

1832: Nathan succeeded Andrew Johnson as postmaster.

1832: Nathan Soule grantee, A Johnson grantor, Clay lot #37.

1832: Nathan Soule grantee, R Soule grantor, Clay lot #36

1833: A Nathan Soule is listed as a mortgager and HW Schroepfel is listed as mortgagee – with no location listed.

1833: Nathan Soule grantee, HC Nellis, Clay lot #35.

1835: Christian (sic) and Nathan Soule are listed as mortgagers and New York Life Insurance and Trust Company is listed as mortgagee in Clay, NY (Lot #37.)

1836: "He was elected to Assembly from Onondaga County. The following year he was again placed on the ticket but was defeated. He was an active and influential member and the author of the present Usury Law of the State."

1837: Nathan served a session in the State Legislature prior to that he had served as a congressman from the Montgomery district. In 1838 he was also associate judge of the Court of Common Pleas. In 1837, Judge Soule

***Honorable Nathan Soule Ctd....***

was instrumental in the building of a church (Christian/Unitarian) in Euclid, Onondaga County, New York. "The builders being Dr. E.L. (Ephraim Leech) Soule, Hosea Crandall, Moses Kinne, Judge Nathan Soule and others. It was used by different denominations until about 1850, when the Methodist Episcopal Society purchased the property. It is now used as a town hall and warehouse."

1838: "He was appointed one of the judges of the Court of Common Pleas and held office for four years."

1841: "He was elected Supervisor and served one year."

1842: Nathan Soule mortgager and Trus. Sch and Gosp. Lot of Clay, mortgagee, Lot #37.

1842: Nathan Soule mortgager, and JH Richards mortgagee.

1843: December 19<sup>th</sup>, 1843, Nathan Soule, executor of Lattin Soule's will acknowledged full payment of mortgage by Harvey L. Soule on land willed by Lattin. Witnessed by A. Johnson, Justice of the Peace.

1844: Nathan Soule mortgager and B. Morehouse mortgage, Clay lot #25.

1844: Nathan Soule mortgager and J. Kinney mortgage, Clay lot #24.

1844: Nathan Soule mortgager and DA Oriett mortgagee, no location given.

1844: Nathan Soule grantee, C Chase grantor, Clay lot #25.

1844: Nathan Soule grantee, A. Willsey, Clay lot # 24, HW Schroepfel, Clay lot #89.

1845: Nathan Soule mortgager and (?) Conro mortgagee, Clay lot #38.

1845: Nathan Soule mortgager and TS Davis mortgagee, no location given.

1845: Nathan Soule grantee, H Lynn (ano) grantor Clay lot #38.

1845: Nathan Soule grantee, HW Schroepfel grantor, Syracuse (????)

1846: Nathan Soule mortgager and AL Soule mortgagee, no location given.

1846: Nathan Soule mortgager and JG Forbes mortgagee, Clay lot #39.

1846: Nathan Soule grantee, H Petrie grantor, Clay lot #34

1846: Nathan Soule grantee, (?) Baker grantor, Clay lot #34.

1846: "He was a prominent candidate for the Constitutional Convention but was not nominated since that period he has been in private life."

1847: A meeting covering the Plank Road proposals was held January 1<sup>st</sup>, 1848 at the house of S. Diffin in Euclid Village. Nathan Soule and Ephraim L. Soule, were directors.



***Honorable Nathan Soule Ctd....***

1848: Nathan Soule mortgagee and HK Warner mortgagee, Clay lot #34

1848: Nathan Soule mortgager and T Porter (ano) mortgagee, Clay lot #34. ?

1849: Nathan Soule mortgager and JG Smith (ano) mortgagee, Clay lot #38.

1853: Nathan Soule (ano) mortgager and P Van Denberg, no location given – possibly Cicero.

1855: “At a prayer meeting in his house, Frances West, his granddaughter age thirteen, whos (sic) presence was unknown to him came and knelt by him and prayed earnestly for him. This awakened him to a sense of his religious duties in his God and posterity, and soon after the little faithful granddaughter had the happiness to know that her grandfather had given his heart to God and become a praying man, under the ministry of Reverend William Morse he was baptized, united with the Methodist Church and lived consistently in its communion and fellowship, the remainder of his days.”

1856: Nathan Soule mortgager and HD Hatch mortgagee, Clay lot #25.

1857: In 1857, there are two dockets found that list Nathan Soule vs. individuals. On February 9<sup>th</sup>, 1857, the court settled in favor of Nathan Soule, and ordered a settlement paid for damages of \$2.50 on March 6<sup>th</sup>, 1857. This suit was filed against a John Peacock. (Ironically – this could be John Peacock, the father of William Peacock, who eventually married Charlotte Snook, granddaughter of Nathan’s!) The defendant confessed, and he was also ordered to pay suit costs of \$1.95. Another suit was filed in that same year, and a judgment was rendered against the defendant and the court ordered defendant to pay \$1.20 to Nathan Soule. On August 27<sup>th</sup>, 1857 Nathan filed suit for damages against a Thomas Murphy. Murphy was ordered to pay \$175.00.

1858: Nathan Soule Mortgager and HR Hibbard mortgagee, Clay lot #36.

1859: Nathan Soule mortgager and AB Southwick mortgagee, no location given.

1859: Nathan Soule mortgager and EL Soule mortgagee, no location given.

1859: Nathan Soule grantee, HL Soule grantor, Clay lot #48.

Prior to his death in 1860: “His disease was bronchial consumption under which he suffered much the last year, but suffered uncomplainingly and with Christian fortitude and submission. He desired to be fully conscious of the presence of death when it came and to have a calm and peaceful exit from time. In these desires his heavenly father was kind to him. His aged friend and physician who had seen many die, had never seen an adult depart this life so seemingly easy. Not a muscle convulsed, no limb moved, no expression of pain came over the face, no groan was heard. He composed his form, closed his eyes as if going into a natural sleep and naught but his breathing told he was dying. He had closed considerably his business relations to earth, had given directions for his funeral, bidden farewells to his family and friends, closed his eyes on things below and then consciously entered to cross the narrow strait which connects time with eternity carrying with him the firm expectations of meeting his companion and other loved and departed ones who had preceded him. He then calmly and peacefully left earth for heaven. He has left eleven children and other numerous connections.”

1860: John and Andrew J. Soule were named executors of Nathan’s will, which was dated March 1<sup>st</sup>, 1860. Named in the will were as follows:

***Honorable Nathan Soule Ctd....***

Polly, who received \$200.00 and a note against her husband in the amount of \$100.00.

Lucinda, who received \$300.00.

Harriet, who received \$10.00, as she received hers prior to the will being drawn up.

Lydia, who received \$300.00.

Rhoda, who received \$300.00.

Nathan, Jr., who received \$500.00, with a provision to pay \$600 estate tax on the old homestead, if he did not do so, he was to receive \$100.00.

Alfred, who was to receive \$600.00 to be held by the executors.

Wife of James O. Soule (Betsy), was to receive tables, chairs and sofa (sic), for taking care of Nathan after the death of Christiana.

To the five girls, all the bed and bedding was to be divided equally.

John was to receive Nathan's secretary.

John, Andrew and James were to divide all real personal property. Cattle and sheep to be kept by John or James.

Land was to be divided.

Harvey L. was to receive \$5.00 as he had received his prior to the drawing of the will.

Nathan's will was witnessed by David J. Moyer, Daniel Schoolcraft and P Quackenbush.

1866: Nathan Soule (ano) mortgager and AF Wheeler mortgagee, Clay lot #2.

1866: Nathan Soule (ano) grantee, AJ Wheeler grantor, Clay lot #2.

Sources:

Docket Book of Cornelius Mogg

Will of Lattain Soule

Will of Judge Nathan Soule

Early Settlers & Development of the Town of Clay

Onondaga County Early Settlers card file (housed at Onondaga County Library, Syracuse, NY)

Soule Kindred Newsletter, Vol. I, No.2, 4/1967, pg.21

Soule Kindred Newsletter, Vol. III, No.4, 10/1969, pg. 182

Soule Kindred Newsletter, Vol. IV, No.4 10/1970, pg. 182

IGI

Syracuse Journal Obituaries (4/12/1853 pg. 2 & 1/10/1860 pg. 3)

Index of Mortgagers/ees of Onondaga County, 1794-1870

Index to deeds, Grantees/ors of Onondaga County, 1794-1870

Letter written from Charles Soule to Jane Smith, August 13, 1914, from Grand Haven, MI.

Letter written by JF Johnson MD, January 24, 1860 (In Euclid).

Notes of Donna Fleming.



## Soule Milestones

Milestones: "**Marian O'Connell**, long time member and former secretary of Soule Kindred died in May of 1999. Her funeral was on 03 May 1999 in Washington, D.C. This passing was reported by her sister, **Faye Daily** of Midland, Texas. Faye also reports that her sister, **Irene Jones** of Pueblo, CO. has had two strokes. All three sisters plus another one, **Marie Sinclair** used to attend all the Reunions."

Milestones: "**Robert Shove** of Rochester, NY reports proud achievements of his granddaughters. **Granddaughter Carolyn** became a member of the National Junior Honor Society, joining her **sister Sandra** who became a member two years earlier. Both are Cheerleaders for their school. Sandra is on the Varsity and Carolyn on the Junior Varsity. Sandra sings in the chorus and Carolyn plays the flute in the band. "We are proud grandparents"



### Rockes celebrate 50th

Kenneth and Margaret "Peg" Roche of Vero Beach celebrated their 50th wedding anniversary with family at Medieval Times in Kissimmee. The event was hosted by sister B.J. Haner of Colonie, N.Y. The Rockes were married on Oct. 13, 1951, in Oneonta, N.Y. The couple moved to Vero Beach in June 1981. They have five children, four who reside in the Orlando area and one in Alaska. There are five grandchildren. Roche retired from Indian River Memorial Hospital as director of engineering. Mrs. Roche is a certified public accountant. A celebration with friends took place Oct. 20. They are shown on their wedding day and as they are today.

### More MILESTONES:

From **Mr. & Mrs. Brendemuhl** a new granddaughter **Emma Marie Tate** daughter of **Donna (Brendemuhl) Tate** and **Scott Tate**. **Emma Marie Tate** was born 09 December 2001 , From **Gretchen Kohrt Reese** 6 hickory Grove Pt. Savannah, GA - My Mother, **Katherine R. Kohrt** died 08 Dec 2001. She was born 23 December 1905 and was a much cherished Mother and Grandmother - note from B.J. Haner, Mrs. Kohrt was a long time member of Soule Kindred having joined soon after the organization started. She joined in 1970 and maintained continuous membership until her death.

## Mary F. Soule

The service for former Emporian Mary Frances Soule, 93, of Arkansas City will be at 2 p.m. Thursday in the Patio Garden of Memorial Lawn Cemetery. The Rev. Ron Carter of Topeka will conduct the service. There also will be a service conducted by Miriam Chapter 14 of the Order of the Eastern Star.

Memorial contributions to Hospice Care of Kansas at Winfield or the Central Christian Church in Arkansas City can be sent to the Roberts-Blue-Barnett Funeral Home.

Mrs. Soule died Sept. 22, 2001, at Arkansas City.

She was a homemaker and the housemother for Sigma Sigma Sigma sorority for five years.

Mary Frances Mather, the daughter of George Thomas and Hattie Henson Mather, was born July 13, 1908, at Topeka. She married Freeman Roy Soule on July 31, 1926, at Kansas City, Mo. He died Jan. 12, 1978, at Emporia.

Mrs. Soule was a member of the Flint Hills Christian Church. She also was a member of Miriam Chapter 14 of the Order of the Eastern Star and American Legion Auxiliary of Ball-McColm Post 5.

She is survived by a son, Roy L.

Soule of Arkansas City; seven grandchildren; and 14 great-grandchildren. A daughter, Dorothy E. Melander, died July 24, 1988. Three brothers and three sisters also died earlier.

# Achievements

Duluth News Tribune

LOCAL

## Duluth Air National Guard to honor outstanding members

By Chuck Frederick  
News Tribune staff writer

Duluth's Air National Guard wing will honor its "best of the best" today and pay tribute to retiring members.

An official awards ceremony is scheduled for 9:30 a.m. inside the 148th Fighter Wing's main hangar building at the Duluth International Airport. The guest speaker is Maj. Gen. Eugene Andreotti, the adjutant general of the state of Minnesota.

Those being honored include:

◆ Jill Erickson, Airman of the Year.

An Esko High School graduate and member of the 148th since 1988, she is an airman first class in the wing's military personnel flight. She currently is working on a five-level military personnel course and is pursuing a degree in elementary education at the University of Wisconsin-Superior.

◆ Sherri Stokes, Non-Commissioned Officer of the Year.

Another Esko High graduate, Staff Sgt. Stokes has been with the 148th since 1987, working now as the head of the wing's lo-

gistics group. A graduate of Wisconsin-Superior, she currently is enrolled in the Satellite NCO Academy and is pursuing a degree in logistics-supply through the Community College of the Air Force. In civilian life, she teaches religious education at St. Rose Catholic Church in Proctor.

◆ Allen Sowl, Senior Non-Commissioned Officer of the Year.

A graduate of Duluth East High and a member of the unit since 1981, Master Sgt. Sowl is the wing's security forces superintendent. He holds an associate of applied science degree in industrial security and most recently completed a desert warfare training course in Nevada. Sowl currently is pursuing a degree in criminology and sociology at the University of Minnesota Duluth.

◆ James Juntti, First Sergeant.

A Hermantown High and University of Wisconsin-Eau Claire graduate and a member of the unit since 1979, Master Sgt. Juntti works in the 148th's aircraft generation squadron. He's a military education instructor

and a former reporter for a weekly newspaper in Northwestern Wisconsin. In 1998, he authored a 200-page book, detailing the 148th's history.

The 148th Fighter Wing is one of six Air Guard units responsible for defending American airspace. This year, its members also began training to drop bombs onto enemy targets, and for six weeks each year, members travel with their F-16 Fighting Falcon jets to Panama to fight the drug war. They are responsible for patrolling the skies there and then intercepting and helping to arrest in-air drug traffickers.

Based in Duluth with a detachment in Panama City, Fla., the Air Guard wing has nearly 1,400 full- and part-time members, making it one of the Northland's largest employers. It estimates that it pours more than \$45 million a year into the local economy in salaries, purchased goods and services, and spin-off employers.

Chuck Frederick is a community reporter. He can be reached weekdays at (218) 723-8316 or by e-mail at cfrederick@duluthnews.com

### 2000 Airman, NCO, Senior NCO of the Year




2000 Airman, NCO, Senior NCO and 1st Sgt of the Year were selected and announced during the October UTA. Pictured here (l-r) with Col Timothy Cossalter and CMSgt Tom Sinnott are: Airman of the Year A1C Jill Erickson, Support Group, NCO of the year SSgt Sheri Stokes, Logistics Group, and Senior NCO of the Year MSgt Al Sowl, Support Group. Not pictured is 1st Sgt of the Year MSgt James Juntti.



## Miscellaneous Information of Interest

*I received an appointment from the NSDAR President General Linda Timber Watkins  
Advisor - Genealogy Team  
NSDAR Units Overseas Committee 2001-2004*

*My brother died October 24, Glendale Ohio - Edward Caton Carman, 87 yrs -  
~~not married - 50 years of marriage~~*



National Society  
Daughters of the American Revolution

**Ann G. Carman Peavey (Mrs. John F.)**  
Advisor - Genealogy Team  
NSDAR UNITS OVERSEAS COMMITTEE

31 Peachtree Lane Hendersonville, NC 28791 (828) 697-2296  
anmpv@home.com

**THE JACKSON LABORATORY**  
Bar Harbor, Maine 04609 U.S.A.

Thomas H. Roderick, Ph.D.  
Senior Staff Scientist, Emeritus, Active

*Thomas Roderick@acedia.net*  
207-288-3371 email: thr@jax.org

**DNA PRESERVATION**  
GeneSaver®, preserving DNA since 1996.

- Create your family's private DNA bank.
- All services by mail.
- No refrigeration needed!

Knowing what DNA they inherited may one day spare family members from serious medical problems.

GeneSaver®  
P.O. Box 544, Grantham, NH 03753  
Tel/Fax 603-863-3665 dna2go@genesaver.com

*Caroline Kardall - Historian  
General of the New Society  
of Mayflower Descendants  
spoke at our last meeting.  
She gave me this for  
publication in NH in case  
any of our men still holding  
Tule name might be  
interested.*  
J.F.

## E- Mails of Interest

<p>Although I've been tracing my family trees for 4 to 5 years now I just began looking for my Soule roots. I recently discovered a great site that you might find helpful as it helped me.  <a href="http://members.aol.com/calebj/mayflower.html">http://members.aol.com/calebj/mayflower.html</a></p> <p>It's a website devoted to the Mayflower and those who sailed on her and gives some info about the children of the Pilgrims.</p> <p>Here's the list of children of George and Mary (Bucket) Soule that you'll find under George who'll you'll find in the left hand column marked under passenger list.          Zachariah, John, Nathaniel, George (Jr.), Sussana, Mary, Elizabeth, Patience, and Benjamin. Birth and death dates are given as well as place of birth &amp; death, of the children and their spouses some with dates and place of marriage.          Hope this helps you some.          I'll keep an eye out for the names you mentioned in your post. If you see anything out there on Sarah Soule, daughter of John and Rebecca (Simmons) Soule who was also the granddaughter of George &amp; Mary (Bucket) Soule please e-mail me. I probably am also a descendant of Francis and Hester Cooke. Francis was also aboard the Mayflower so if you come across anything about them please pass it on. Thanks and good luck!!</p> <p>Noreen Maloney LaTour          Burlington, Vermont</p>	<p>Dear Mr. Standish, One item I would find quite interesting would be an article on the where George Soule lived in the Plymouth and Duxbury, MA areas. I mean precise, with a map, so a person could take a walking or driving tour including the location of his burial place. I've narrowed one of the locations down to Powder Point, but I do not know where he is buried. Just something I think some of us newcomers may find interesting to read.</p> <p>Regards,          Henry Rogge</p>	<p>I am looking for any info on <b>Fred Soule</b> born 11 Aug 1853 (most likely NY) Died 21 Feb. 1929. Married 30 Aug. 1876 in ALBION , NY. TO. MARIE ANTOINETTE AMANS (b.28 AUG. 1855 in Altmar) Three Children ;</p> <p>ROYAL SOULE          CYNTHIA SOULE          HUNTER SOULE b.apr 1897</p> <p>Thank you,          RAY PARKER</p>	<p>My website is <a href="http://www.pedigreeforest.com">www.pedigreeforest.com</a>          I would love to have you check into the Alburg's William Soule, my long lost ancestor who fought for the British during the Revolutionary War and escaped to Alburg, VT thinking it was Quebec. The Mayflower Society rejected my cousin's application because they said our William Soule came down from Canada and couldn't be a descendant of George Soule of the Mayflower.</p> <p>Joan</p> <p>From: "joan verdoorn"  <a href="mailto:verdoorn@inreach.com">verdoorn@inreach.com</a></p>
---------------------------------------------------------------------------------------------------------------------------------------------------------------------------------------------------------------------------------------------------------------------------------------------------------------------------------------------------------------------------------------------------------------------------------------------------------------------------------------------------------------------------------------------------------------------------------------------------------------------------------------------------------------------------------------------------------------------------------------------------------------------------------------------------------------------------------------------------------------------------------------------------------------------------------------------------------------------------------------------------------------------------------------------------------------------------------------------------------------------------------------------------------------------------------------------------------------------------------------------------------------------------------------------------------------------------------------------------------------------------------------------------------------------------------------------	---------------------------------------------------------------------------------------------------------------------------------------------------------------------------------------------------------------------------------------------------------------------------------------------------------------------------------------------------------------------------------------------------------------------------------------------------------------------------------------------------------	-----------------------------------------------------------------------------------------------------------------------------------------------------------------------------------------------------------------------------------------------------------------------------------------------------------------------------------------------------	---------------------------------------------------------------------------------------------------------------------------------------------------------------------------------------------------------------------------------------------------------------------------------------------------------------------------------------------------------------------------------------------------------------------------------------------------------------------------------------------------------------------------------------------------------------------------------------------------



**E-MAIL ADDRESSES**

<b>Name</b>	<b>E-Mail Address</b>	<b>Other Information</b>
Allstott, Maria Elana Soule	<a href="mailto:allstot@gte.net">allstot@gte.net</a>	
Bishop, Robert	<a href="mailto:RmBishop@aol.com">RmBishop@aol.com</a>	Soule Kindred President – Immediate Past
Brumbaugh, Jane	<a href="mailto:Jbbrun@aol.com">Jbbrun@aol.com</a>	
Buchholz, Eugene	<a href="mailto:buchholz@powerweb.net">buchholz@powerweb.net</a>	
Campbell, Clay D.	<a href="mailto:WYNTER1213@aol.com">WYNTER1213@aol.com</a>	Haskell, Pain, Farrow lines
Carey, Eldon W.	<a href="mailto:2careys@vvm.com">2careys@vvm.com</a>	
Carpenter, Nathan	<a href="mailto:Ncarpenter1@juno.com">Ncarpenter1@juno.com</a>	
Castro, Patricia	<a href="mailto:kearneysearch@worldnet.att.net">kearneysearch@worldnet.att.net</a>	
Clark, Ann and/or Tom Watkins	<a href="mailto:acmeannie@redshift.com">acmeannie@redshift.com</a>	
Colwell, William N.	<a href="mailto:Mec10wnc@aol.com">Mec10wnc@aol.com</a>	
Cook, Elizabeth	<a href="mailto:Cookin@aol.com">Cookin@aol.com</a>	
Croteau, Beatrice	<a href="mailto:hankc@valstar.net">hankc@valstar.net</a>	
Detling, Douglas G.	<a href="mailto:ddetling@greencity.org">ddetling@greencity.org</a>	
Epperson, D. Alberta Soule	<a href="mailto:Epperson@Sierratil.com">Epperson@Sierratil.com</a>	
Gaudlitz, Lauren	<a href="mailto:lrg_larson@hotmail.com">lrg_larson@hotmail.com</a>	
Gerbert, Pat and Wes	<a href="mailto:pagebert@aol.com">pagebert@aol.com</a>	
Gipson, Mrs. Donald E. (Jane)	<a href="mailto:gipson@grrtech.com">gipson@grrtech.com</a>	
Godreau, Carol	<a href="mailto:cgodreau@neuron.uchc.edu">cgodreau@neuron.uchc.edu</a>	
Hall, Mary Susan	<a href="mailto:glasshall@aol.com">glasshall@aol.com</a>	Jenkins & Dunham surname links to Soule
Hall, Ruth E.	<a href="mailto:ruthhall@worldnet.att.net">ruthhall@worldnet.att.net</a>	Webmaster
Hannon, Ruth	<a href="mailto:rflare@att.net">rflare@att.net</a>	Researching gr-grandmother Eliza Soule
Healy, Chuck	<a href="mailto:cehealy@aol.com">cehealy@aol.com</a>	
Herring, Joann Rhome	<a href="mailto:quiltetu@aol.com">quiltetu@aol.com</a>	
Hill, Christine	<a href="mailto:jhill@ksable.com">jhill@ksable.com</a>	[note: jhill(one)]
Hill, Ruth E.	<a href="mailto:ruth_e_hill@juno.com">ruth_e_hill@juno.com</a>	Haskell, Squire, and Barrett research
Hughes, Judy	<a href="mailto:judyh@dnnet.net">judyh@dnnet.net</a>	
Johnston, Barb	<a href="mailto:fussfoot@aol.com">fussfoot@aol.com</a>	
Johnston, Pat	<a href="mailto:alita@myseniors.com">alita@myseniors.com</a>	
Keldgord, Robert “Bob” E.	<a href="mailto:SacChief@aol.com">SacChief@aol.com</a>	Soules from Kalamazoo and Calhoun Counties, MI
Kenyon, Russell W.	<a href="mailto:rkenyon@prodigy.net">rkenyon@prodigy.net</a>	Kenyon, Burdick, Babcock, Crandall, Canfield, Livermore, Soule research
Kreger, Lewis	<a href="mailto:Lkreger60@aol.com">Lkreger60@aol.com</a>	William “The Loyalist” Soule research
Kruse, Brian L.	<a href="mailto:ekruse@internetni.com">ekruse@internetni.com</a>	
Leeper, Mrs. Lynda C.	<a href="mailto:crusader@cbd.net">crusader@cbd.net</a>	
Lowman, Carolyn Soule	<a href="mailto:lowman@greencafe.com">lowman@greencafe.com</a>	
Maddux, C.J.	<a href="mailto:cmaddox@sitevision.com">cmaddox@sitevision.com</a>	Mayflower web site
Mahon, Margaret M.	<a href="mailto:Jmmm9@home.com">Jmmm9@home.com</a>	
Mallon, John	<a href="mailto:John-sandy@prodigy.net">John-sandy@prodigy.net</a>	



SOULE KINDRED NEWSLETTER, VOL. XXXVI, NO. 1 JANUARY 2001

Name	E-Mail Address	Other Information
MacDonald, R. Andrew	<a href="mailto:Andymac1@concentric.net">Andymac1@concentric.net</a>	
Nielsen, Eloise	<a href="mailto:hnielsen@hrn.bradley.edu">hnielsen@hrn.bradley.edu</a>	
Parrott, Mike	<a href="mailto:MLParr514@aol.com">MLParr514@aol.com</a>	
Petrie, Mary Lou	<a href="mailto:mlpetrie@earthlink.com">mlpetrie@earthlink.com</a>	
Richardson, Mrs. Diane L.	<a href="mailto:drich@arwest.com">drich@arwest.com</a>	
Robertson, Muriel Soule	<a href="mailto:SouleSearcher@aol.com">SouleSearcher@aol.com</a>	
Rocke, Margaret "Peg"	<a href="mailto:PegRocke@aol.com">PegRocke@aol.com</a>	<i>Soule Kindred Secretary</i>
Schlosser, Christine	<a href="mailto:chris-schlosser@wi.rr.com">chris-schlosser@wi.rr.com</a>	<i>Soule Kindred Past President</i>
Saario, Dianna	<a href="mailto:dsaario@mediaone.net">dsaario@mediaone.net</a>	
Schlosser, Gerry Soule	<a href="mailto:gsoelesch@aol.com">gsoelesch@aol.com</a>	
Sharp, Sandra M.	<a href="mailto:ssharp@frontiernet.net">ssharp@frontiernet.net</a>	Onondaga County, NY Soule research
Sheldon, Robert	<a href="mailto:bobsheldon@compuserve.com">bobsheldon@compuserve.com</a>	Sole research, the <i>Sole Society</i> – United Kingdom
Shepherdson, Nancy	<a href="mailto:snanner@compuserve.com">snanner@compuserve.com</a>	
Soule, Frank Flint	<a href="mailto:ffsoule1@juno.com">ffsoule1@juno.com</a>	Rowland Soule Researcher (1733 & 1762)
Soule, Gary M.	<a href="mailto:garysoule@prioritymanagement.com">garysoule@prioritymanagement.com</a>	
Soule, George	<a href="mailto:gsoule@charter.net">gsoule@charter.net</a>	<a href="http://www.carleton.edu/curricular/ENGL/faculty/soule/index.htm">www.carleton.edu/curricular/ENGL/faculty/soule/index.htm</a>
Soule, Sharon G.	<a href="mailto:dsoule@coffey.com">dsoule@coffey.com</a>	
Soule, Thomas Fry, Jr.	<a href="mailto:JeSoule@aol.com">JeSoule@aol.com</a>	
Soule, Willis	<a href="mailto:soulewf@dot.state.sc.us">soulewf@dot.state.sc.us</a>	
Soules, Bob	<a href="mailto:soulesbob@aol.com">soulesbob@aol.com</a>	
Soules, Harry F., Jr.	<a href="mailto:hfsoules@hotmail.com">hfsoules@hotmail.com</a>	
Soules, Les	<a href="mailto:lessoules@juno.com">lessoules@juno.com</a>	
Standish, Norman	<a href="mailto:Standish@aeronic.net">Standish@aeronic.net</a> or <a href="mailto:Nstandish@aol.com">Nstandish@aol.com</a>	<i>Soule Kindred President</i>
Tilley, Patricia	<a href="mailto:Pat21y@home.com">Pat21y@home.com</a>	
Trask, Paul	<a href="mailto:ptrask@att.net">ptrask@att.net</a>	
Turner, Paula J.	<a href="mailto:wht@netsightsinc.com">wht@netsightsinc.com</a>	
Verdoorn, Joan	<a href="mailto:verdoorn@inreach.com">verdoorn@inreach.com</a>	<a href="http://homeinreach.com/verdoorn">http://homeinreach.com/verdoorn</a>
Vessely, Pat	<a href="mailto:vessely@hevanet.com">vessely@hevanet.com</a>	
Wagenknecht, Walter Chappell	<a href="mailto:wagenwal@aol.com">wagenwal@aol.com</a>	
Wallace, Bob & Barbara	<a href="mailto:babspenwow@aol.com">babspenwow@aol.com</a>	
Yaezenko, Suzette	<a href="mailto:suzett@moscow.com">suzett@moscow.com</a>	
Zopff, Thomas	<a href="mailto:zopff@go-concepts.com">zopff@go-concepts.com</a>	

MEMBERSHIP FORM

The Soule Kindred In America was formed in 1967 by a group of dedicated people who were interested in preserving and passing information on to future generations. The Soule Kindred is a non-profit organization incorporated in Massachusetts in 1972. Through the diligence of the first president George Soule and Colonel John Soule, direct descendants of the Mayflower George Soule, a great heritage was found to have been left by our founding fathers.

Through the Soule Kindred quarterly publication, *Soule Newsletter*, information of genealogical value is disseminated to its members. Reading back issues of the *Soule Newsletter* is like walking through American and European History, after all, Europe is where most of our ancestors lived. Current news items about Soule Kindred members' activities bring "cousin to cousin" closer.

Genealogy records are available through the Soule Kindred historian to assist those interested in tracing their family roots. The Soule Kindred has microfilm records containing hundreds of names and information back to the Mayflower passenger George Soule.

Soule Kindred membership lists are published annually leading you to a whole new world of "cousins."

The annual Soule Kindred Reunion, held in a different city each year, offers an opportunity to meet your new "cousins" and make long lasting friendships.

There are no restrictions to joining the Soule Kindred. Your name does not have to be Sole, Soule, Sowle, Soules, or even begin with an "S". We have Jones, Abraham, Boyd, Edwards, Myers, Turner and many other names in our membership.

If the idea of finding your roots and meeting new "cousins" appeals to you, we invite you to send in your application and join with us in researching and celebrating our fascinating heritage.

Please send this membership application along with a check made payable to Soule Kindred In America, Inc.

To: Betty Jean Haner, Treasurer  
53 New Shaker Road  
Albany, NY 12205-3615

Memberships:	Cost:	Please Check Box Of membership desired:
Student (to age 22)	\$ 7.50	<input type="checkbox"/>
Regular Membership	\$ 15.00	<input type="checkbox"/>
Sustaining Membership	\$ 25.00	<input type="checkbox"/>
Patron Membership	\$ 50.00	<input type="checkbox"/>
Life Membership	\$200.00	<input type="checkbox"/>

Please enter my membership to the Soule Kindred In America, Inc. Enter your name and address as you wish it to appear on the *Soule Newsletter* mailing label.

NAME \_\_\_\_\_

STREET ADDRESS \_\_\_\_\_

CITY \_\_\_\_\_ STATE \_\_\_\_\_ ZIP \_\_\_\_\_

Introduced by: \_\_\_\_\_

MEMBERS: Please make extra copies of this introduction and pass them out to interested people. Be sure to include your name in the "Introduced by:" area.

**Soule Kindred**

\_\_\_\_\_ *Generation* \_\_\_\_\_

\_\_\_\_\_ *Family*

**Soule Descendant:** \_\_\_\_\_  
\_\_\_\_\_  
\_\_\_\_\_

**Ancestral**

**Line:** \_\_\_\_\_  
\_\_\_\_\_  
\_\_\_\_\_

**Parentage:** son/dau of \_\_\_\_\_ and \_\_\_\_\_

**Birth or Baptism:** was b. \_\_\_\_\_ at \_\_\_\_\_

**Death:** died \_\_\_\_\_ at \_\_\_\_\_

**Burial:** buried at \_\_\_\_\_ *cemetery*

**Residence & Removals:**

Resided \_\_\_\_\_  
\_\_\_\_\_  
\_\_\_\_\_

**Occupation:** \_\_\_\_\_

**Military Service:** \_\_\_\_\_  
\_\_\_\_\_  
\_\_\_\_\_

**Other biographical data:** \_\_\_\_\_  
\_\_\_\_\_  
\_\_\_\_\_  
\_\_\_\_\_  
\_\_\_\_\_  
\_\_\_\_\_  
\_\_\_\_\_  
\_\_\_\_\_  
\_\_\_\_\_  
\_\_\_\_\_

**He/she married:** \_\_\_\_\_

on \_\_\_\_\_ at \_\_\_\_\_

**Parentage:** son/dau of \_\_\_\_\_ and \_\_\_\_\_

**Birth or Baptism:** He/She was b. \_\_\_\_\_ at \_\_\_\_\_

**Death:** and died \_\_\_\_\_ at \_\_\_\_\_

**Burial:** buried at \_\_\_\_\_

**Biographical:** \_\_\_\_\_  
\_\_\_\_\_  
\_\_\_\_\_  
\_\_\_\_\_  
\_\_\_\_\_  
\_\_\_\_\_  
\_\_\_\_\_  
\_\_\_\_\_  
\_\_\_\_\_

**Other marriages:** \_\_\_\_\_  
\_\_\_\_\_



Central Depot, 304 Broadway, New York. }  
March 18, 1853.—d&wlyr

**RELIEF TO THE AFFLICTED**

*Bancker's Wonder, or Discovery! An External Application to those who are afflicted with that Dreadful Disease called the PILES.*

THE subscriber offers to those persons of both sexes young and old, who may be afflicted with the above disease.

**An Infallible Remedy,**

to be applied externally. He has been advised by those who have used it to offer it for sale. He does not know of a single instance where it has failed to give relief to male and female, young or old. No family should be without a box of it on hand, as it is a

**Sure Cure for Scalds, Burns and Sores.**

The reason why he has not offered it to the public before now, is, that there are so many cures advertised by men in that business that it might have been condemned without a fair trial, and all he has got to say is, that if necessary, Certificates from some of the most respectable Citizens in the community can be obtained to prove that IT IS INFALLIBLE.

It is for sale at No. 6 Farmer Block.  
Price One Dollar per Box.  
J. H. BANCKER,  
Syracuse, August 14, 1852. dly



None Genuine unless accompanied by a fac simile of the above Engraved Wrapper of Dr. E. L. Soule & Co. upon each Box.

IN offering to the public this fully celebrated SOVEREIGN BALM OF LIFE, it is not our wish to make any false statements or wild assertions of their superior efficacy in restoring to health the sick and suffering, well knowing that their reputation as a standard Medicine is of itself sufficient reference for the afflicted.

Many proofs might be given of their value and proper but we prefer those unacquainted with them to satisfy themselves by enquiring of living witnesses, and trying the pills. They will find them perfectly safe and reliable in all cases, being purely vegetable, and a medicine worthy their best confidence and patronage.

The following certificates were sent us for the public good:

DEAR SIR, Monroe Co. N. Y., May 10, 1851.  
We, the undersigned, citizens of Hamilton, having used personally Dr. Soule's Sovereign Balm Pills, and witnessed the health restoring effects thereof, cheerfully recommend these Pills to the afflicted as the best with which we are acquainted.

G. M. Roberts, H. A. Tibbels, D. G. Otis,  
M. D. Phillips, G. R. Brown, Lewis Reed,  
P. S.—You are at liberty to publish this for the public good.

**Beware of Counterfeits!**

We are not aware that any one who is making a spurious article has yet dared to make use of our name; but some of them have had the impudence to imitate our boxes and copy our circulars, certificates, &c. Unless the public are careful when they purchase, they will be deceived.

The genuine Sovereign Balm Pills can be had at wholesale and retail, of Dr. E. L. SOULE & Co., Euclid, Onondaga county, N. Y.

Sold by every Druggist in Syracuse, and by their agents in every town in the county. lydaw

4/17/1853 Dr. E. L. Soule & Co. Syracuse

No language can convey an adequate idea of the immediate and almost miraculous change which it occasions in the diseased, debilitated, and shattered nervous system; whether broken down by excess, weak by nature, or impaired by sickness, the anstringent and relaxed organizations is at once re-braced, re-vivified and built up. The mental and physical symptoms of nervous disease vanish together under its influence. Nor is the effect temporary. On the contrary, the relief is permanent, for the cordial properties of the medicine reach the constitution itself, and restore it to its normal condition. Well may the preparation be called the

**MEDICAL WONDER**

of the nineteenth century. It is, as the first scientific men in the old world have admitted, that miracle of medicine heretofore supposed to have no existence. A STIMULENT THAT ENTAILS NO REACTION. Its force is never expended, as is the case with opium, alcoholic preparations, and all other exhalants. The effect of these is brief, and it may well be said of him who takes them, "The last state of that man is worse than the first." But the Elixir is an exhilarant without a single draw back—safe in its operation, perpetual in its happy influence upon the nerves, the mind, and the entire organization. In cases of neuralgia, headache, vertigo, pain in the nerves of the face, and the various train of nervous affections, it will produce a cure in an astonishing short space of time; and it will also remove depression, excitement, a tendency to blush, restlessness, sleeplessness, dislike of society, incapacity for study or business.

**LOSS OF MEMORY,**

Confusion, dizziness, rush of blood to the head, melancholy, mental debility, hysteria, indecision, wretchedness, thoughts of self-destruction, fear of insanity, hypochondriasis, dyspepsia, general prostration, inability to sleep, liver complaint, fluer alba, and all diseases incident to females, decay of the propagating functions, hysterics, monomania, vague terrors, palpitation of the heart, impotency, barrenness, constipation, and &c., &c. from whatever cause arising it is, if there is any reliance to be placed on human testimony, absolutely Incurable

**CONSTITUTIONAL DEBILITY.**

All who have injured themselves by private and improper indulgences, will find in this Cordial a sure relief.

Impotence—weakness of the genital organs. Loss of virile power is the penalty most frequently paid to those who give a loose rein or license to their passions.—YOUNG PERSONS are too apt to commit excesses from not being aware of the dreadful effects. Although impotency occurs from strictures, deposits in the urine gravel, and from numerous other causes, yet the abuse of the sexual organs, by excessive venery or self-pollution, particularly the latter, is the more frequent cause of it. Now, who that understands the subject will pretend to deny that the power of procreating the species is lost sooner by those who practice the solitary vice, than by the prudent. Besides, by premature impotence, the digestive functions are deranged, and the physical and mental powers weakened by a too frequent and too great excitement of the genital organs.

**MARRIED PERSONS**

or others, conscious of inability, from whatever cause, will find the Cordial, after the use of a bottle or two, a thorough regeneration of the system. Where want of offspring is a cause of regret, it is of inestimable value.

The nature of the maladies relieved by this Cordial are usually such as to leave the publication of certificates out of the question, or the proprietor could produce a host of the most conclusive testimony to show that the great reputation it enjoys was not accidentally obtained, but is firmly based upon its positive and apparently miraculous virtues. In all directions are to be found the happy parents of healthy offspring, who would not have been so but for this extraordinary preparation. And it is equally potent to the diseases for which it is recommended. Thousands of young men have been restored by using it, and not a single instance has it failed to benefit them.

**FOR IMPOTENCY, INCONTINENCE, OR NOCTURNAL EMISSIONS, &c.**

The astonishing success which has attended this invaluable medicine, for loss of muscular energy, physical lassitude and general prostration, or any of the conse-

admirable  
White,  
a tonic  
who mi  
rimony  
They  
for com  
sition o  
which i  
In the  
cure, r  
residen  
this wo  
nomica  
Our r  
llore, at  
try, to c  
rately fl  
change  
Remt  
Syrac



Friends  
sought  
effort, t  
tion ma  
result o  
that the  
Point  
orders i  
more e  
in this  
experie  
ment, v  
lence o  
to final  
Amo

in great  
Card T  
Secrets  
low pri  
bility,  
Furnitu  
cheaper  
The j  
lishme  
newed  
submit  
nature!

Syrac

CA

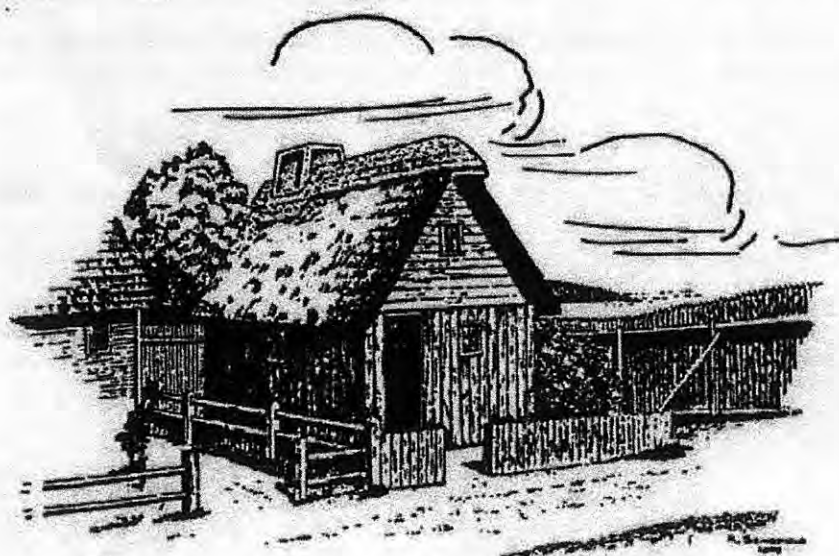


Advertisement taken from the Syracuse Journal dated April 7, 1853. Dr. Ephraim Leech Soule ran a successful Oriental Sovereign Balm Business in Euclid, Onondaga County, NY for many years.



## SOULE KINDRED NOTE PAPER

New Stock of **Soule Kindred In America** notepaper has arrived. The notepaper measures 8.5 X 11 inches folded into quarters. It is available in packets of 10 notes with envelopes for \$5.00 plus \$1.00 postage.



"Soule House in Pilmoth Plantation, Plymouth, Mass."

---

Please send:

\_\_\_\_\_ Packet(s) (10 notes with envelopes) @ \$5.00 + \$1.00 postage per packet: \$ \_\_\_\_\_

NAME \_\_\_\_\_

STREET ADDRESS \_\_\_\_\_

CITY \_\_\_\_\_ STATE \_\_\_\_\_ ZIP \_\_\_\_\_

Please make you check payable to ***Soule Kindred In America***, Inc. and send to:

Soule Kindred In America, Inc.  
Betty-Jean Haner, Treasurer  
53 New Shaker Road  
Albany, NY 12205-3615



## SOULE KINDRED NEWSLETTER ORDER FORM

1967 - 1990 issues - \$2.50 per issue; \$10.00 for 1 year of issues  
 1991 - present issues - \$3.75 per issue; \$15.00 for 1 year of issues

Complete sets are available for \$125.00 (excluding copies not listed below) plus \$10.00 shipping in the US. Copies not listed below can be copied at a cost of 5 cents per page plus collating and stapling charges.

I enclose \_\_\_\_\_ \$ \_\_\_\_\_ for \_\_\_\_\_ copies of back issues as checked.

1967-V. 1	#1( )		#3( )		1985-V. 19	#1( )	#2( )	#3( )	#4( )
1968-V. 2	#1( )	#2( )	#3( )		1986-V. 20	#1( )	#2( )	#3( )	
1969-V. 3	#1( )	#2( )	#3( )		1987-V. 21	#1( )	#2( )	#3( )	#4( )
1970-V. 4			#3( )		1988-V. 22	#1( )	#2( )	#3( )	#4( )
1971-V. 5	#1( )	#2( )	#3( )		1989-V. 23	#1( )	#2( )	#3( )	#4( )
1972-V. 6		#2( )	#3( )	#4( )	1990-V. 24	#1( )	#2( )		#4( )
1973-V. 7	#1( )	#2( )	#3( )	#4( )	1991-V. 25	#1( )	#2( )		#4( )
1974-V. 8	#1( )	#2( )	#3( )	#4( )	1992-V. 26	#1( )	#2( )	#3( )	#4( )
1975-V. 9	#1( )	#2( )	#3( )	#4( )	1993-V. 27		#2( )		
1976-V. 10	#1( )	#2( )	#3( )	#4( )	1994-V. 28	#1( )	#2( )	#3( )	N/A
1977-V. 11	#1( )	#2( )	#3( )	#4( )	1995-V. 29		#2( )		N/A
1978-V. 12	#1( )	#2( )	#3( )	#4( )	1996-V. 30	#1( )	#2( )	#3( )	N/A
1979-V. 13	#1( )	#2( )	#3( )	#4( )	1997-V. 31	#1( )	#2( )	#3( )	#4( )
1980-V. 14	#1( )	#2( )	#3( )	#4( )	1998-V. 32	#1( )		#3( )	#4( )
1981-V. 15	#1( )	#2( )	#3( )	#4( )	1999-V. 33			#3( )	#4( )
1982-V. 16	#1( )	#2( )	#3( )	#4( )	2000-V. 34	#1( )	#2( )	#3( )	#4( )
1983-V. 17	#1( )	#2( )	#3( )	#4( )	2001-V. 35	#1( )	#2( )	#3( )	#4( )
1984-V. 18	#1( )	#2( )	#3( )	#4( )					

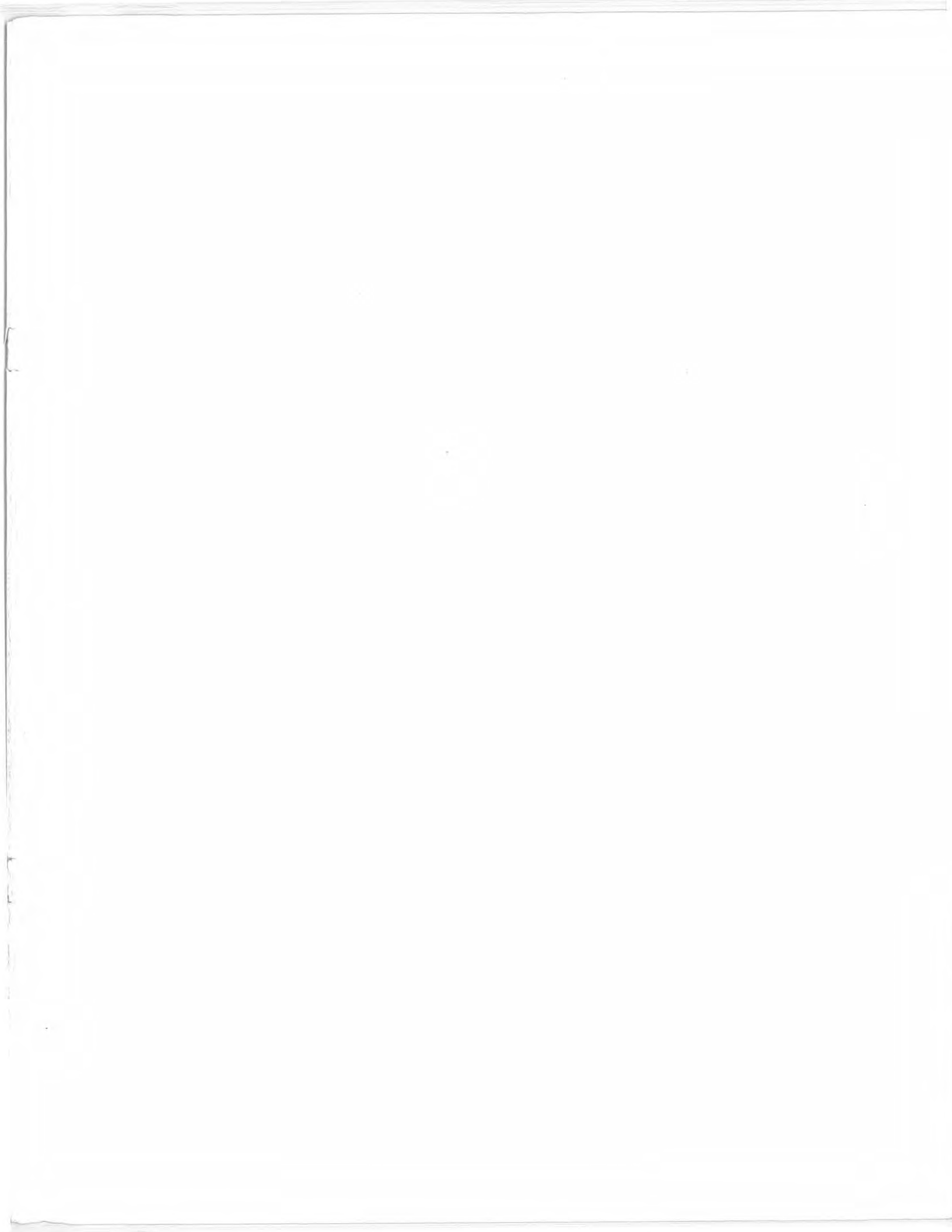
Send this form along with your check made payable to **Soule Kindred In America, Inc.** to:

Betty-Jean Haner  
 53 New Shaker Rd.  
 Albany, NY 12205-3615

NAME \_\_\_\_\_

STREET ADDRESS \_\_\_\_\_

CITY \_\_\_\_\_ STATE \_\_\_\_\_ ZIP \_\_\_\_\_





The Fort, Plimouth Plantation, picture taken in 1996

SOULE KINDRED IN AMERICA, INC.  
53 NEW SHAKER ROAD  
ALBANY, NEW YORK 12205-3615

Bulk Rate  
U. S. Postage  
**PAID**  
Chicago, IL  
Permit No. 5146

ADDRESS SERVICE REQUESTED