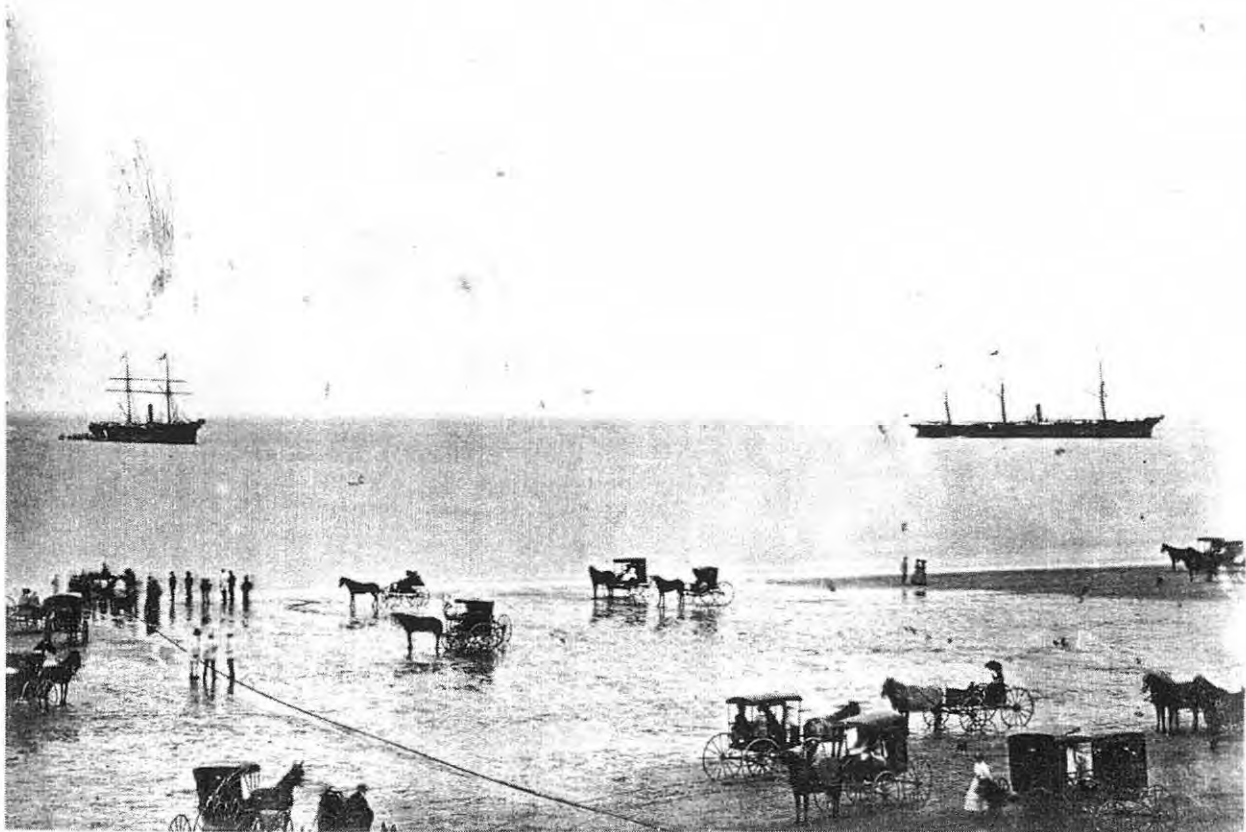




# SOULE NEWSLETTER

LIBRARY OF CONGRESS: No. C371, VOL. XXXIV NO. 4, OCTOBER, 2000



THE LANDING.

Duxbury Beach in 1869 at the time of the landing of the Trans-Atlantic cable from France.  
Used with permission: The Duxbury Rural and Historical Society.

## Soule Kindred in America, Inc.

53 New Shaker Road, Albany, NY 12205-3615  
518 869 8368

Web Site: <http://www.homepages.rootsweb.com/~ruthhall/Soule/Sksoulekindred.html>

### Governance

- President** - Robert M. Bishop, Apr-Nov 16 Heritage Lane, Scotch Plains, NJ 07076-2420, Phone & Fax 908 322 6680; Dec-Apr 311 E. Walnut St., Avon Park, FL 33825, Phone & Fax 863-453-3387; RmBishop@aol.com
- 1st Vice-President** - Norman W. Standish, 540 West Carroll St., Lanark, IL 61046; Phone 815-493-2307; Standish@aeronic.net; Nstandish@aol.com
- 2nd Vice-President, Director 00** - Willis F. Soule, 114 Coronado Road, West Columbia, SC 29269, 803-356-0702; soulewf@dot.state.sc.us
- Secretary** - Margaret A. Roche, 2208 Nevara Ave., Vero Beach, FL 32960, 561-569-5268; mroche@digital.net
- Treasurer** - Betty-Jean Haner, 53 New Shaker Road, Albany, NY 12205-3615, 518-869-8368
- Director 01** - Patricia A. Johnston, 7401 Willow Rd., #363, Frederick, MD 21702, 301-644-5894; patticak25@hotmail.com
- Director 01** - Lee Manausa, 235 Palo Verde Dr., Leesburg, FL 34748-8801, 352-326-9221; clmanausa@lcia.com
- Director 01** - Barbara E. Wallace, May-Oct: 3699 Eastview Dr., Traverse City, MI, 49684; Nov-Apr: 14972 S.W. 112<sup>th</sup> Circle, Dunnellon, FL 34432-8781; babspenwow@aol.com
- Director 02** - Christine M. Hill; 2402 Kipling Pl., Hutchinson, KS 67502; Phone 316-663-7288; jhill1@kscable.com [note: jhill(one)]
- Director 02** - Geraldine Schlosser; 4654 N. 108<sup>th</sup> St., Wauwatosa, WI 53225; gsowlesch@aol.com
- Director 02** - Frank Flint Soule III; 1413 Dorothy Dr., Palatine, IL 60067; 847-991-7923; ffsoule@uop.com
- Director 03** - Carol Godreau, 33 A Rita Dr., Bristol, CT 06010; 860-585-1710; cgodreau@neuron.uchc.edu
- Director 02** - Barbara Johnston, 9 Gloucester Lane, North Granby, CY 06060-0068; 860-653-7969; fussfoot@aol.com
- Director 02** - Carol Soule; PO Box 1223, 257 Mystic Rd., Bedford, Quebec J0J1A0, Canada; carolandstan@yahoo.com

### Administration

- Assistant Treasurer** - Harrison C. Leland, 225 Consaul Rd., Albany, NY 12205, 518-869-6418
- Counselor** - James B. Tiffin, Tiffin & Tiffin, 160 Federal St., Boston, MA 02110, 617-330-9001; TiffinVMF@aol.com
- Historian** - Charles J. Sowles, PO Box 329, St. Francisville, IL 62460, 618-948-2286; twolions@shawneelink.com
- Keeper of Banners** - Norman Soule, 9011 SE 88<sup>th</sup> St., Ocala, FL 34472-3018
- Mayflower Historic Sites Committee** - Lee Manausa (see left)
- Newsletter Editor** - Chuck Healy, 810 Mariner's Point Dr., Creve Coeur, MO 63141, 314-542-0587; cehealy@aol.com
- Reunion Host 2001** - Mary Soule Kelly, 1218 4<sup>th</sup> Ave. W., Hendersonville, NC 28739; 828-697-1839; msoulek@ioa.com
- Membership** - Betty-Jean Haner (see left); Robert Soules, 2099 Arroyo Dr., Riverside, CA 92505-1659
- Scholarship Committee** - Betty-Jean Haner (see left), Harrison C. Leland (see above), and Betty Harris, 7711 Broadway St. #8B, San Antonio, TX 78209, 210-930-6252
- Reunion Future Planning Committee** - Barbara Johnston and Carol Godreau (see left for both)
- Webmaster** - Ruth E. Hall, 1128 Carrington St., Toledo, OH 43615-4161, 419-865-6472; ruthhall@worldnet.att.net

## News from President Bob Bishop

### Reunion 2001 is June 27 – July 1

Mary Soule Kelly, our 2001 Reunion Hostess, reports preliminary plans for our annual meeting in the Ashville, NC area of the Blue Ridge Mountains, with headquarters in nearby Hendersonville, NC.

To avoid summer holiday crowds, the reunion is scheduled for late June, centralized in the Quality Inn of Hendersonville, which has an indoor swimming pool, a restaurant, banquet facilities, and an evening pub.

Ashville and Hendersonville are about 22 miles apart, with the Hendersonville Airport halfway between. The Spratanburg Airport is an alternate possibility about one hour by auto from Hendersonville.

Three sightseeing trips are being organized.

1. The Biltmore House in Ashville.
2. Chimney Rock Park and Lake Lure.
3. A scenic tour of the Blue Ridge Mountains and visit to the Cherokee Indian Village.

Lists of the many other points of interest in the area will be supplied later for those who may wish to spend extra days there before or after the reunion.

Details and reservation applications are to be published in the January newsletter and on our website.

### New Soule Genealogy Books

In the July newsletter and at our recent reunion, I reported briefly on progress by the Mayflower Society in expanding their publications on descendants of George Soule to the 5<sup>th</sup> and 6<sup>th</sup> generations. They plan a projected six new books for this project.

#### *Four Prior Publications Based on Early Soule Kindred Members' Research*

The Mayflower Society's four prior publications on descendants of George Soule are based on data originally compiled by Col. John E. Soule, co-founder of Soule Kindred, and member Dr. Milton E. Terry. The first in 1980 was a silver covered

edition tracing six generations. The out-of-pocket research for this edition was substantially paid for by Soule Kindred, which also handled sales.

Twelve years later, in 1992, the first pink-covered edition appeared including corrected and additional information on the first four generations. Further four-generation edits were included in a second pink edition of 1995 and a third pink edition in 1999. Robert S. Wakefield revised the three pink editions.

The 1999 edition, recently placed on sale, is well worth review by George Soule descendants. For example, in my own line (Susannah Soule West, William West, Ebenezer West, Joseph West) I found that the 1999 edition adds substantive information to the 1995 sections for George Soule himself and his great grandson and Revolutionary Officer Ebenezer West. A change in sequence of children of William West was made.

Copies of the new 1999 third edition of the pink-covered four-generation book are available for \$8 plus \$3 shipping from Mayflower Families, P.O. Box 3297, Plymouth, MA 12361.

#### *Fifth and Sixth Generations Project*

The six new books are to update and expand data on the 5<sup>th</sup> and 6<sup>th</sup> generations from the 1980 silver-covered edition. The first, recently printed, is for descendants of George's son John.

The 5<sup>th</sup> generation descendants of John Soule appear in the new volume as Family Numbers 230-349. Each such family lists known children as the 6<sup>th</sup> generation, and, occasionally, grandchildren are included as the 7<sup>th</sup> generation.

Our member Louise Walsh Throop of Sunol, CA revised the new book from the original compilation by Col. John Soule and Dr. Milton Terry.

Additions or corrections are welcome if supported by primary source documentation. Such correspondence should be sent to Edith Bates Thomas, Soule MFIP, 41359 Whitecrest Ct., Fremont, CA 94539.

Copies may be purchased from the above address in Plymouth for \$10 plus \$3 shipping.

### *The Col. John Soule Bequest*

The Board of Directors is considering financial support of this project from funds accrued from the bequest of Soule Kindred of Col. John E. Soule by Will of 28 October 1977 "to continue research and publication of the genealogical research and publication of the genealogical history of the Soule family based on my own lifetime research."

The annual Treasurer's report of June 1, 2000 reported that the principal of the original \$10,000 bequest is now \$23,529.44. During that prior year, the fund grew by \$1,058.94

The Publications Chairman of the Mayflower Families in Progress reports that out-of-pocket expenditures for research on the new Soule books over the past two-to-three years has been \$10,632.

Also under consideration is solicitation of additional funds from our membership through the newsletter and/or annual membership bills. Such gifts would be contributed to Soule Kindred and then passed on for the Soule descendant research in the Mayflower Families in Progress project.

### **Historic Sites Committee**

The Mayflower Society is organizing a committee to compile lists of Historic Sites related to the Pilgrims. Representatives of 12 Family Societies are to compose the committee.

Our delegate to the committee is Kindred Board Director Lee Manausa. Her postal and e-mail addresses appear on the inside front cover of this newsletter. Please contact her concerning relevant sites such as monuments, parks, historic houses, cemetery markers, etc.

### **Lost Slide Show Found**

An almost-forgotten slide show of "Soule-Sowle History" was found in his attic recently by former Kindred President Ron Soule. It consists of two Kodak Carousels filled with 35 mm color slides. Long-time members of Soule Kindred remember this show being a centerpiece of annual Soule Kindred reunions for several years. It is dated 1975.

It starts with a note by Col. John Soule advancing the possibility that the origin of the surname was at

a Basque Province interpreted in French as "Land of Soule." It traces by maps and pictures migrations of Pilgrims from England to Holland, back to England and the Mayflower, then to Plymouth in America.

The slides include a series of maps identifying numbers of families with the Soule surname in the American colonies at various periods, scenes from American wars, the reconstructed Plimoth Plantation, etc. About half the second carousel pictures Soule Kindred annual reunions.

There are also a few additional loose slides, including one identified as the house of my ancestor Susannah Soule West.

Unfortunately there is no script for the narration that probably accompanied the slides. The show will be available at our annual meeting in Hendersonville for viewing.

### **Susannah Soule West House Picture**

At or after the 1996 reunion in Plymouth, someone borrowed the framed, colored painting of the farmhouse of this daughter of George Soule with the intention of having photocopies made.

Do you know where it is now? Please let me know.

### **New Life Members**

Congratulations and thanks to two new life members, Leslie Hoag Hope and Hayden Philip Soule. Hayden became a third-generation life member as the son of Scott Soule and the grandson of Carol Sager Soule and Stanley E. Soule.



## *Editor's Corner*

I am most excited about the picture you see on the cover of this quarter's newsletter. When I was in Duxbury, Massachusetts this past Spring, I was doing some genealogical research in the Duxbury Free Library when I came across a book on Duxbury history that was published by the Duxbury Rural and Historical Society. Thumbing through the book I came across the picture of the 1869 landing of the Transatlantic cable in Duxbury from Brest, France.

You may remember that we published last year a rather lengthy reprint of an article that appeared in the first volume of this newsletter. That article, written in 1969, described the events of the day of the cable's landing on Duxbury Beach and also indicated who, from the Soule family, was present. Included in that contingent were some of my direct line folks, so you can imagine my joy when I saw this picture. I either have relatives in this picture, or almost certainly they were close by at the time it was taken. The same may be true for a number of you.

Anyway, I decided to contact the Duxbury Rural and Historical Society to see if I could a) get a copy of the book and b) if I could publish a copy of the picture in our newsletter for you to see. I was very disappointed when I was informed that the book has been out of print for some time now. However, the Society was most kind in sending me a copy of the picture and granting permission for its use in our newsletter. So, here it is!

I did a little digging into the history of the Transatlantic cables (there have been many over the years since the mid-1800s). To that end I have provided an extract of copyrighted material below that I hope you also enjoy. The website with this information is <http://muse.jhu.edu/demo/tech/40.lnickles.html>. The citation for the work is David Paull Nickles, "Telegraph Diplomats: The United States' Relations with France in 1848 and 1870." The large ship in the photograph is called the *Great Eastern* and was the ship laying the telegraph cable. The paragraph below goes back a few years from the Duxbury cable landing to 1865 and Ireland. This is of particular interest to me (so I will bore you with it) because my father's Irish side lived in Caherciveen near Valentia Island in County Kerry where several of the Transatlantic cables originated coming toward the States. In addition, it briefly describes some of the difficulties that were encountered in successfully getting the cables across the ocean, which should be of general interest.



Copyright © 1999 by the Society for the History of Technology. All rights reserved. This work may be used, with this header included, for noncommercial purposes within a subscribed institution. No copies of this work may be distributed electronically outside of the subscribed institution, in whole or in part, without express written permission from the JHU Press.

“The *Great Eastern* started from Ireland on 23 July 1865. The expedition was just six hundred miles from North America when the new cable broke during an attempt to repair a defective segment. Efforts to retrieve the cable failed. In the wake of yet another disappointment, the Atlantic Telegraph Company formed a new corporation, the Anglo-American Telegraph Company, in order to raise the necessary capital for another attempt in 1866. Finally, on 27 July 1866, the *Great Eastern* successfully reached Newfoundland with a functioning cable. Shortly thereafter, the *Great Eastern* and two other ships raised the cable lost the year before. The *Great Eastern* finished laying the 1865 cable, and two working telegraph lines rested on the floor of the Atlantic Ocean by 8 September 1866. In 1869, a French firm, the Société du Câble Transatlantique Français, used the *Great Eastern* to lay a third cable. This line more directly connected France and the United States, extending from Brest to Duxbury, Massachusetts, via the island of St. Pierre. Anglo-American Telegraph reacted to the ending of its monopoly by forming a cartel with the French challenger on 15 January 1870. The agreement gave the French Société 36.66 percent of the revenue from the three cables. Improved versions of these cables would remain in use until the development of long submarine telephone cables and communications satellites during the second half of the twentieth century.”

Well, it's fascinating stuff. I hope you enjoy it.

Also included in this edition of the newsletter are a number of items to include the presentation of this year's scholarship winners. Our best wishes to these students and their families.

As always, please send to me any items you would like to have considered for inclusion in the newsletter. Especially welcome are older family photographs and histories. Items will be returned to you according to your desires.

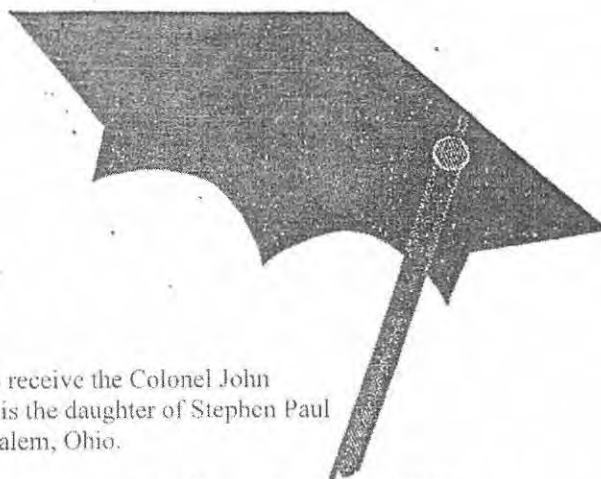
## Scholarship Announcements

There are two scholarships awarded this year. The recipient's pictures and a brief biography of each are presented below. Following these presentations is information and an application form for next year's scholarships.

### THE COLONEL JOHN EDWARD SOULE



### MEMORIAL SCHOLARSHIP



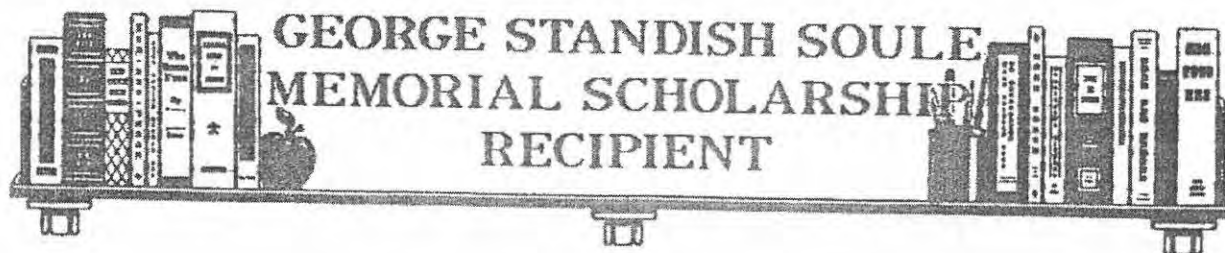
Chelsea Nicole Knight has been selected to receive the Colonel John Edward Soule Memorial Scholarship. She is the daughter of Stephen Paul and Patricia Lynn Eicher Knight of West Salem, Ohio.

Chelsea is a member of the National Honor Society, Student Council and Senior Editor of the Yearbook. She is a 3 year varsity volleyball player and Captain of the team. She served as an Outdoor Education counselor, participated in Athletes in Action Weekly Bible Study and was leader of "See you at the pole."

In her community, she worked at the West Salem Soup Kitchen and was a Salvation Army bell ringer. At her church she organized Big Brothers/Sisters Ministry Team. Chelsea went to Mexico and Los Angeles with '99 Project Serve and Global Force 2000 to Haiti.

Chelsea's chemistry teacher says of her "Chelsea Knight is synonymous with **POSITIVE ATTITUDE, GENUINE CARING and TREMENDOUS ENTHUSIASM.**" Her youth pastor says "she is compassionate, caring, motivated, dependable and committed to sharing her faith in God with others."

Chelsea says of herself "Life is **FUN** and I want to make a difference in my community." She wants to become the 5<sup>th</sup> generation in her family to teach in her home district. She is attending Mount Vernon Nazarene College in Mount Vernon, Ohio; majoring in Art Education.



**GEORGE STANDISH SOULE  
MEMORIAL SCHOLARSHIP  
RECIPIENT**

The George Standish Soule Memorial Scholarship will go to Karen Lee Hornsleth, daughter of Christine Lee Parr and Christian R. Hornsleth II of Dunedin, Florida.

Karen has been accepted at Florida State University and will major in Biology. She plans to be a Physician's Assistant.

During her high school years, Karen was very active in a wide variety of programs. She was a member of the Student Council, Pep Club, Fishing Club, Powderpuff Football, Interact Club (High School Rotary) Dunedin High School's Career Resource Center and Chairman of the High School Blood Drive and other groups.

In her community, she was in an intern program at the hospital emergency room. For this she received credit from St. Petersburg Jr. college in a Career and Life Planning Program.

Karen has also been active in her church and says in her goals statement she will be involved in the Presbyterian Church on Campus. "My faith and church activities are a very big part of my life."

The Director of Youth Ministries of her church says, "I recommend Karen Hornsleth to you with highest regard due to her strong leadership abilities, social skills, ethics, high moral character and her strong commitment to God."

Karen graduated "with distinction" in June 2000.





Dear Ms. Betty-Jean Haner and the Scholarship Committee,  
I could not tell you how thrilled I was at receiving your letter. It gives me great pride to be able to say I am a direct lineage to George Soule, one of our countries first Pilgrims. My cousin has been working on researching our family's history for a while now, this scholarship is a great confirmation letting my entire family know what an awesome background we come from. She was so happy to learn that all her hard work and dedication has come to such a victorious ending. It is such an honor getting the chance to use this scholarship to further my education. I would like to tell you so much more about myself but I've become so active at school that I am going away on a Student Government retreat with Florida State University. I could not leave without sending you off a quick thank you note. I will write to you again next week, in the meantime my mother is contacting our local newspapers the St. Petersburg Times and Suncoast News.

I plan to do my very best in hopes to make all of you and my ancestors proud. Thank you so much for this opportunity.

Sincerely Yours,

Karen Lee Hornsleth

### SCHOLARSHIP APPLICATION

Soule Kindred in America, Inc. will continue to award academic scholarships to George Soule descendants. These scholarships go by various names such as the Colonel John Edward Soule Scholarship and the George Standish Soule Memorial Scholarship as indicated above. The application on the next page should be completed and sent no later than the 2001 annual reunion date (27 June) to:

Miss Betty-Jean Haner  
Chairman, Scholarship Committee  
53 New Shaker Road  
Albany, NY 12205

(Remainder of this sheet to be used by applicant.)

**SOULE KINDRED IN AMERICA, INC.  
SOULE KINDRED MEMORIAL SCHOLARSHIPS  
\$1000.00 AWARD**

TO BE COMPLETED BY APPLICANT

- I. Name \_\_\_\_\_  
Address \_\_\_\_\_  
Phone \_\_\_\_\_  
Father's Name \_\_\_\_\_  
Mother's Maiden Name \_\_\_\_\_
- II. Proven Lineage to George Soule - Mayflower Passenger. (on separate sheet)
- III. What college or training program do you expect to attend? \_\_\_\_\_  
\_\_\_\_\_
- IV. Have you been accepted by this college or training program? \_\_\_\_\_
- V. What will be your major field of study? \_\_\_\_\_
- VI. List school and community activities below:
- VII. Please write a short statement of your goals for the future on the back of this form.
- VIII. Please enclose 2 letters of reference from teachers or religious counselor.
- IX. A transcript of student's grades is requested to be forwarded with this application.
- X. All applications must be received by Chairman of Scholarship Committee by July 1st of applicant's Senior year, or of year of application.

## Obituaries

This obituary was sent to us by SKA member Arthur R. Granum.

**DICKSON**  
Edgar C. Dickson, age 62, of San Antonio, died Saturday, June 19, 1999. He served in the U.S. Marine Corp. and graduated from T.M.I., class of 1955. Mr. Dickson attended the University of Texas, University of Southern California, and the University of Houston. Survivors: wife, Sarah Abright Dickson; daughter, Anne E. Dickson, San Antonio; sons, Travis M. Dickson, John A. Dickson, and David C. Dickson, all of Flagstaff, AZ; sisters, Mary Ann Hale, Houston, TX and Lillian Warwick, San Antonio, TX; and numerous nieces and nephews.

GRAVESIDE SERVICE  
WEDNESDAY - 2:15 P.M.  
FT. SAM HOUSTON  
NATIONAL CEMETERY  
The Rev. Robert Plester officiating. Memorial contributions may be made to the Cancer Therapy & Research Center, in care of Dr. Quareen Khan, 7979 Wurzbach, San Antonio, TX 78229. Arrangements with

**PORTER LORING  
NORTH**

**MEMORIAL SERVICE**  
2107 North Loop 1604 East • 495-8221

## Miscellaneous

From: Barbara Granum – information promised to folks attending the 2000 reunion.

Book shown at Ventura reunion: *On the Mayflower: Voyage of the Ship's Apprentice and a Passenger Girl.*

Written by Kate Waters. Order from:

Scholastic, Inc.

2931 E. McCarty St.

Jefferson City, MO 65101

Order # ISBN 0-590-67408-0

Cost approximately \$6

From: Bill and Sue Harrison [mailto:dogtown@inreach.com]  
Subject: re: your e-mail to me dated 26 Aug

Chuck,

Here is the info for the picture:

Four generations of George Soule descendents gathered together at the home of Dr. John and Dr. Dorothy Soule, Christmas 1998.

Pictured in the photo are John D. and Dorothy F. Soule, their children, grandchildren, and greatgrandson Connor Harrison.

Front row, left to right: William E. Harrison, John D. Soule, Dorothy F. Soule, Patricia Soule Kendrick.

Back row, left to right: Susan Soule Harrison, Melody Muren-Harrison, Christopher M. Kendrick, Colin M. Harrison (holding Connor M. Harrison), Christa M. Harrison, Jonathan T. Kendrick, Katherine J. Kendrick.

John and Dorothy Soule are lifetime members of the Soule Kindred, as are their daughters Susan Harrison and Patricia Kendrick, and granddaughters Christa Harrison and Katherine Kendrick.

Susan



6204 N. Audubon Street  
Spokane, Washington 99205-7278  
20 August 2000

Mr. Chuck Healy, Editor  
Soule Kindred Newsletter  
810 Mariner's Point Drive  
Creve Coeur, Missouri 63141

Dear Mr. Healy,

In the August edition of the Newsletter I saw the copy of the ad placed by the Soules Motor Car Company of Grand Rapids, Michigan. That reminded me of another ad.

A number of years ago the Los Angeles Times issued a reproduction of the December 4, 1881 edition of the newspaper. Luckily, I was able to obtain a copy after I had spotted the notice placed in it by E. Soule, Manufacturer.

Enclosed is a copy of the page bearing his ad. Despite the small print (I had to reduce the page) I thought you might find it interesting enough to include it in a future Newsletter. Perhaps California cousins can identify this Soule better than I can.

Thanks for the great Newsletters. I especially appreciate the articles and letters by kindred who have successfully found their ancestors. I also like the bits and pieces people run across in their searches. And, of course, as always, the queries are high points.

Sincerely,



Elinor Soule Grancher

Enc.

Editor's note: The page with the ad referred to in this letter is on the next newsletter page. Unfortunately, due to the total size of the sheet, I was able to only scan in as much as you see presented. There is much else on this 11 X 14 inch sheet that is wonderful to peruse for its historical value. Many thanks, Elinor, for a great submission!

LOS ANGELES DAILY TIMES, SUNDAY MORNING, DECEMBER 4, 1891.

YOUNG MAN.

leading man
the town;
if you can
do down.
It's not an
thing...
but other folks
in mind,
ask for statements
make.
an awful lot,
a very good,
but folks did try,
A coward.
This day...
and when...
to be with away,
like.
a him at all,
to feel like cheap,
to call
it deep.
the chest to pass
and grass,
they were, what,
been some.
try about
to youth;
to feel,
the truth.
—Boston Post.

JAR PICKUPS

have contradicted Moore,
now have contradicted
stands about as well as
round Purgator.
rind oyster shell? asks
age. It must, if it is
to through a plain new
line, we don't want to,
near moves into the sub-
patch of ground big
turkey, his first am-
t. Farmer's Club. —Palo
used for 500 strippers
of the tobacco factory
of the board, however, that
use have applied for an
many Colonels present
hoped that the man who
said Mr. was regarded as
ever are the men to send
trace as ministers. They
conclude rejected by
ving a stable Govern-
ment Program.
re religious even under
circumstances. A deacon
prayers of the congre-
gation of a pirate
age. —Los An-
a who find it difficult to
one to look at night, sleep
here level on a cloth that
to the woman or dust of
to. Other, try taking the
surviving find intensely.
any an esteemed conten-
tion article entitled "Bank
L." We should say, con-
tral law trade principles,
should be not "for re-
"protection" as well.

are on the wrong track,"
He, when the hardy son
top his hat down on his
the most of them.
after a critical examina-
the right track, but about
a wrong end of it. —Burl.

If you want your hens to
or hen-house clean," says
ry journal. No necessity
the same enterprise
ears out the hen-house
number of hens is not in-
on the contrary. That
in this climate.

MISCELLANEOUS.

TOPICAL CALIFORNIA

Weeks Monthly;
a book of every
man, poultry-raiser, and
reliable and practical. It
is word in on and how to
satisfactorily (see J. R.
A. Nathan, Attorney, Cooper,
Cooper and Ford, and
and practical matters. Bro-
cker 218-2200 S. Santa Fe
Street, Los Angeles. Ad-
dress: Los Angeles, Cal.

RESTAURANT.

120. — Restaurant.
hours of the day or night in
Spanish, French and Ameri-
can favorite dishes.
be not at all hours.
BENJAMIN FRIEDLAND.

BEST

MISCELLANEOUS.

DOLLAR STORE! DOLLAR STORE! CHRISTMAS PRESENTS!

For Everyone. We have a
Finer Stock than ever Before and Prices Lower!

- We have marked our Goods at a slight advance over Cost in order to insure a speedy sale. Notice a few of the Bargains:
Wax Dolls, 6 inches tall, with hair, only 5 cents.
Wax Dolls, 10 inches tall, with hair, only 10 cents.
Wax Dolls, 24 inches tall, with hair, only 75 cents.
China Tea Sets from 10 cents up. Doll Carriages from 50 cents up.

A Large Stock of WAGONS, VELOCIPEDES, TIN TOYS, WOODEN TOYS, and every other kind of Toys. Also full line of beautiful Velvet PICTURE FRAMES from 15 cents up. An unusually fine selection of Photograph and Autograph Albums at very low prices.

WHY! WHY! WHY!
Can we sell CHRISTMAS PRESENTS at such astonishing low prices? Because we do not buy our Goods on credit and therefore have to pay big prices. We buy strictly for cash and purchase our Goods at the lowest possible rates. We give our customers the benefit of close purchasing and, that is the reason we sell so low.

An Elegant Assortment of Rogers Bros. Silverware,

Consisting of Castors, Butter Dishes, Pickle Dishes, Cold Receivers, Napkin Rings, Etc., Etc.
Beautiful Initial Handkerchiefs put up in Fancy Boxes!

Don't fail to Examine our Stock before purchasing your Holiday Goods.
F. J. GILLMORE, 25 Spring St., opp. Court House.
Our Store is always closed on Sunday.

1853. QUINCY HALL! 1881.

The oldest, most reliable and largest Clothing House in this City, offer their immense Stock at the following reduced prices to the Holiday trade:

Table with 4 columns: Item, Price, Former Price, and another Price. Includes items like Fine French Diagonal Suits, 500 Business Suits, 200 Cheviot Suits, 300 Plain, and 500 Cashmere Suits.

Boys' Clothing in Great Variety.

200 Boys' Suits (4 to 10 years old), \$3.00 to \$5.00. 300 Boys' Cashmere Suits (10 to 16 years old) \$3.50 to \$7.00.
ULSTERS & OVERCOATS.

Table with 4 columns: Item, Price, Former Price, and another Price. Includes items like 100 Chinchilla Ulsters, 100 Cashmere Ulsters, 100 Reversible, and 100 Fancy Ulsters.

All our FURNISHING GOODS, HATS, BOOTS AND SHOES will be sold at TWENTY PER CENT CHEAPER than any other house in this city. Having had 29 years experience, I claim to be an expert in selecting First Class Fashionable Goods at prices that will suit everybody. Give us a call at the QUINCY HALL CLOTHING HOUSE.
L. HARRIS, 63 Main St., Downey Block, Los Angeles.

DOTTER & BRADLEY, FURNITURE!

Carpets, Mattings, Oil Cloths, Linoleums, Wall Paper, Upholstery Goods, Etc.
JUST RECEIVED—A New Line of the Latest Styles in Body Brussels, Moquette, Armature, Tapestry and Two-Plys.
Furniture Castors in Rubber, Iron, Also, the Latest Styles in Parlor and Bedroom Furniture, consisting of EAST-

MISCELLANEOUS.

FARM WAGON MAKING!

A SPECIALTY.

E. SOULE,

MANUFACTURER,

Cor. Fourth and Bryant Sta., SAN FRANCISCO, CAL.

Use the most perfect appliances in the world for turning out all kinds of work to this line.

Any portion a wagon can be supplied imme-

The Best of Seasoned Timber Used.

Heavy Ore Wagons,

UNEQUALLED for STRENGTH and DURABILITY, have been manufactured by me

For 28 Years,

And shipped regularly to Nevada, Utah, Dakota, Colorado and Arizona, varying in capacity from 5 to 30 tons. They are also extensively used in California.

The Manufacture is 700 feet front by 120 feet deep and four stories high, with a splendid Dry House.

Orders can be filled on the shortest notice, or at the rate of

One Wagon Per Day.

I am also fully prepared to make all kinds of

Carriages,

Splendid Farm Wagons,

Trucks,

Agricultural Implements,

Railroad Horse Carts,

Railroad Hand Carts,

Scrapers and Excavators,

AT THE SHORTEST NOTICE.

E. SOULE, Corner Fourth and Bryant Sta., SAN FRANCISCO.

MISCELLANEOUS.



Pat. Nov. 11, 1879, and Nov. 9, 1880.
Medical Electricity.
Horn's Electric Magnetic Belt.
(For the treatment of) First Periods, Neuralgia, Rheumatism, Sciatica, Headache, Toothache, Stomachic, Indigestion, Liver Disease, Nervousness, Dyspepsia, Spinal Disease, Acute, Chronic and other ailments.
GUARANTEED RELIEVED OR REFUND.
W. J. HORNE, Prop. and Mfr., 272 Market Street, San Francisco, Cal.

PACIFIC BANK

Established 1863
Capital Stock \$1,000,000.00
Surplus 459,233.03
San Francisco, July 1, 1891.

RESOURCES:
Real Estate, etc. \$150,000.00
Bills Receivable 187,093.11
U. S. Bonds 428,977.33
Real Estate Loans 12,223.70
Land and Buildings 204,500.00
Cash (in our vault) 605,611.45
LIABILITIES:
Capital Stock \$1,000,000.00
Reserve Fund (Surplus) 459,233.03
Due Depositors 1,469,234.50
Due to other Banks 196,107.25
Due to individuals 22,000.00

We take pleasure in presenting the above our 30th Semi-Annual Statement.
We call attention to our increased facilities for conducting extensive banking and collect accounts of banks, bankers, merchants, manufacturers, farmers and all kinds of business.
We give advice in detail of all our services, and in all cases we will furnish a precise telegraphic code to correspondents, when requested.
Advantages of Gold and Silver Bullion will have special care and prompt returns.
Exchange on the principal cities in the United States, Europe, Mexico and the West Indies, and all parts of the world.
Collection made and prompt returns rendered a matter of course.
Telegraph transfers made with New York, London, Chicago and all principal cities of U. S. and all parts of Europe.
Letters of credit and all commercial letters issued on all parts of the globe.
National, Mexican, Irish and Foreign Bonds and Warrants, 400 CASH ACCEPTED in sight and on time.
Business made on good collateral or approved names. Interest on Deposits and Drafts discounted at low rates.
Deposits received, subject to check without notice.

R. H. McDonald, President.

FOR SALE, A ONE HALF INTEREST IN THE Home & West ELECTRO-MAGNETIC BELT.

THIS IS THE same belt which was manufactured by W. J. HORNE, and which he is extensively advertising as the W. J. HORNE BELT. This belt was invented and patented by myself. I arranged to sell one half interest in this belt to W. J. HORNE, which he now sells in various parts of the world. This belt has been used on numerous occasions. I have received a number of BELTS, of double the power of the HORNE & WEST BELT, and which I have used in every respect, and which I have and will use HALF the cost of the old HORNE & WEST BELT. I will sell my one-half interest in the Home and West Belt, for cash, any person wanting business call at my

New Electro-Medical Belt Office, No. 27 Kearny Street, San Francisco, Cal. C. N. WEST.

S. TAYLOR. V. P. READER.

S. IRVING & CO.

Have the most complete assortment of Gents Furnishing Goods, Ever exhibited in San Francisco. Assortment, Quality and Price will

Editor's note: The following two "articles" were obtained by Frank Soule. I have included excerpts (*in italics below*) from several e-mails I received from Frank relative to what the articles are and how he obtained them for our use in the newsletter.

**TO: Rocky Mountain News.**

*A friend of mine has recently sent me the article "Sins of Sand Creek" by Deborah Frazier as published in your Colorado & The West section, page 7A on September 15, 2000. I am very impressed with the article as it is very factual and well written*

*I would like to inquire about reprinting permission for my genealogical society, The Soule Kindred in America, Inc. . . . My ancestors originated from the same town in New York state as did Silas Soule's people and may be related as a distant cousin. I do not think that Silas was married or had issue, however, he may still have cousins out there. I knew about Silas Soule and his part in the "Bloody Third" affair but did not know that he had time to write a letter of protest after the event. His picture is produced in the middle of the Dee Brown book, "Bury My Heart At Wounded Knee."*

**TO: Chuck Healy**

*It is an interesting and well written article concerning letters found recently about Silas Soule, who was a Captain in the Colorado Third Cavalry Volunteer Regiment who participated in the Sand Creek Massacre in 1864 of peaceful Cheyenne Indians. Silas was murdered by the good citizens of Denver as he held his troop back and would not butcher helpless people. He was characterized in the TV mini series "Centennial." Silas was from Blenheim, Schoharie County, New York from a separate line from my lineage, although he may have been a cousin. I believe Willis Soule had ancestors in the same region as well.*

**TO: Chuck Healy**

*Here is the actual article. The picture referred to was just a picture of the woman who discovered the letters.*

This article is © 2000 DENVER ROCKY MOUNTAIN NEWS

DENVER ROCKY  
MOUNTAIN NEWS

SINS OF SAND CREEK  
LETTERS FROM EYEWITNESS  
ARMY OFFICERS DETAIL 1864  
MASSACRE OF AMERICAN INDIAN  
WOMEN AND CHILDREN

Date: Friday, September 15, 2000

Section: Local

Page: 7A

Illustration: Photo

Source: By Deborah Frazier  
News Staff Writer



Memo: Contact Deborah Frazier at (303) 892-5308 or  
Frazierd@RockyMountainNews.com.

THE SAND CREEK MASSACRE LETTERS

Banner p.1A - LETTERS TELL GRISLY TALE / SAND CREEK  
MASSACRE DOCUMENTS SURFACE, STUN  
CONGRESSIONAL HEARING

Edition: Final

Two long-lost letters surfaced in an Evergreen home this month that bear grisly testimony to the 1864 slaughter of 163 Cheyenne and Arapaho by U.S. troops at Sand Creek.

The letters were written by two Army officers who refused orders to kill the terrified men, women and children encamped under a white flag of surrender and a U.S. flag in southeastern Colorado.

“The letters are ground zero for a congressional investigation in 1865,” David Halaas, chief historian of the Colorado Historical Society, said Thursday.

An investigation team located the site of the massacre last year. Halaas said the letters pinpoint where the killings and mutilations occurred.

“These are the most important evidence we have about the Sand Creek Massacre,” Halaas said, adding that the letters are authentic.

An Evergreen woman, Linda Rebeck, found the letters this month in a box of her elderly mother's papers. Rebeck's great-grandfather had been a farmer near the site of the massacre by U.S. troops.

She released the letters Wednesday to Republican Sen. Ben Nighthorse Campbell on the eve of a hearing on his bill to establish a memorial at the massacre site in southeastern Colorado.

Capt. Silas Soule and Lt. Joseph Cramer, Army officers who refused orders to kill American Indian women and children in the 1864 Sand Creek Massacre, wrote the letters to Maj. Ed Wynkoop, about two weeks after the massacre. They detailed the horrors performed under the leadership of Col. John Chivington.

“A squaw ripped open and a child taken from her,” wrote Cramer, in hope of stopping Chivington from getting a promotion in the aftermath of the massacre. “Little children shot while begging for their lives.”

Soule was equally descriptive.

“Hundreds of women and children were coming toward us and getting on their knees for mercy,” wrote Soule, who was later

murdered in Denver by an ally of Chivington's. "Most of the Indians yielded four or five scalps."

The letters to Wynkoop worked. A series of federal investigations followed, Halaas said.

In an 1864 treaty, "the U.S. government agreed that this was a massacre of a peaceful people under the American flag and promised reparation," Halaas said. "This is the only time I know of that reparations were promised."

No payments were ever made.

Cramer and Soule had been stationed in southeastern Colorado near Bent's Fort. They were commanded to follow Chivington and his troops to the Cheyenne and Arapaho camp, where about 500 Indians slept peacefully under an American flag.

The two officers were ordered to follow Chivington to the Indian camp. When they arrived and the attack began, they ordered their troops not to fire, knowing that Chivington would try to oust them from the military, Halaas said.

"I told the colonel (Chivington) that I thought it murder to jump them friendly Indians," Cramer wrote. "He says in reply, 'Damn any man or men who are in sympathy with them.'"

The letters were handwritten and sent to Wynkoop in Washington, D.C. But each of the officers made handwritten copies - including the copy that Rebeck found. Halaas said the writing matches other letters by Soule and Cramer.

"We'd heard of these letters, Halaas said. "Both of these men testified before Congress and said almost the same things. What they saw was so horrible that they went after Chivington, knowing he was going to go after them."

Rebeck said her mother inherited the letters from her mother, whose father was Mark L. Blunt, a successful Arkansas Valley farmer who had known the Bent family and had stayed at Bent's Fort near the massacre site. A restoration of the fort still exists.

"Mother told me once that she had letters about Sand Creek, but I never read them," said Rebeck, who read them for the first time this month and contacted the Colorado Historical Society.

"It was hard to see little children on their knees have their brains beat out by men professing to be civilized," Cramer wrote.

Rebeck also found nine or 10 affidavits, part of the congressional investigation, that were written by a company clerk in red and blue

ink.

“Today there are people who still believe that the soldiers did not commit atrocities,” Halaas said. “Let them read these letters and them see the passion. These men are shocked. They are angry. And they feel guilty.”

LIB2

Caption: Linda Rebeck of Evergreen recently found authentic letters detailing the 1865 massacre of 163 Arapaho and Cheyenne at Sand Creek. She found the letters in a box containing her elderly mother's personal papers. By Steve Peterson / Special to the News. FILE: ARCHIVE. HARD COPY: PETERSON - SHOOT DATE 2000: 9/14

All content herein is © 2000 DENVER ROCKY MOUNTAIN NEWS

and may not be republished without permission. [Editor's note: SKA has a letter of permission on file from the Denver Rocky Mountain News to republish this article on a one-time basis in the newsletter.]

**TO: Chuck Healy**

*This is the final part. It IS graphic, but it IS history. A Soule who was a “good guy” in a bad time in American history.*

This article is © 2000 DENVER ROCKY MOUNTAIN NEWS

DENVER ROCKY  
MOUNTAIN NEWS

THE SAND CREEK MASSACRE  
LETTERS

Date: Friday, September 15, 2000

Section: Local

Page: 7A

Illustration: Photo

Memo: Banner p.1A - LETTERS TELL GRISLY TALE / SAND  
CREEK MASSACRE DOCUMENTS SURFACE, STUN  
CONGRESSIONAL HEARING  
THE SAND CREEK MASSACRE LETTERS

Edition: Final

These letters are historical documents reprinted without editing. They

are graphic in nature. The first letter is from Lt. Joseph Cramer to Maj. Ed Wynkoop, his commanding officer. The second letter is also to Wynkoop from Capt. Silas Soule. They were written within three weeks of the Sand Creek Massacre, which both Cramer and Soule witnessed.

First letter

Ft. Lyon, C.T.

December 19, 1864

Dear Major:

This is the first opportunity I have had of writing you since the great Indian Massacre, and for a start, I will acknowledge I am ashamed to own I was in it with my Co. Col. Chivington came down here with the gallant third, known as Chivington Brigade, like a thief in the dark throwing his Scouts around the Post, with instructions to let no one out, without his orders, not even the Commander of the Post, and for the shame, our Commanding Officer submitted. Col. Chivington expected to find the Indians in camp below the Com---but the Major Comd'g told him all about where the Indians were, and volunteered to take a Battalion from the Post and Join the Expedition.

Well Col. Chiv. got in about 10 a.m. Nov. 28th and at 8 p.m. we started with all of the 3rd parts of "H" "O" and "E" of the First, in command of Lt. Wilson Co. "K" "D" and "G" in commanding of Major Anthony. Marched all night up Sand, to the big bend in Sanday, about 15 or 20 miles, above where we crossed on our trip to Smoky Hill and came on to Black Kettles village of 103 lodges, containing not over 500 all told, 350 of which were women and children. Three days previous to our going out, Major Anthony gave John Smith, Lowderbuck of Co. "G" and a government driver, permission to go out there and trade with them, and they were in the village when the fight came off. John Smith came out holding up his hands and running towards us, when he was shot at by several, and the word was passed along to shoot him. He then turned back, and went to his tent and got behind some Robes, and escaped unhurt. Lowderbuck came out with a white flag, and was served the same as John Smith, the driver the same. Well I got so mad I swore I would not burn powder, and I did not. Capt. Soule the same. It is no use for me to try to tell you how the fight was managed, only I think the Officer in command should be hung, and I know when the truth is known it will cashier him.

We lost 40 men wounded, and 10 killed. Not over 250 Indians mostly women and children, and I think not over 200 were killed, and not over 75 bucks. With proper management they could all have been killed and not lost over 10 men. After the fight there was a sight

I hope I may never see again.

Bucks, women and children, were scalped, fingers cut off to get the rings on them, and this as much with Officers as men, and one of those officers a Major: and a Lt. Col. cut off Ears, of all he came across, a squaw ripped open and a child taken from her, little children shot, while begging for their lives (and all the indignities shown their bodies that ever was heard of) (women shot while on their knees, with their arms around soldiers a begging for their lives.) things that Indians would be ashamed to do. To give you some little idea, squaws were known to kill their own children, and then themselves, rather than to have them taken prisoners. Most of the Indians yielded 4 or 5 scalps. But enough! for I know you are disgusted already. Black Kettle, White Antelope, War Bonnet, Left Hand, Little Robe and several other chiefs were killed. Black Kettle said when he saw us coming, that he was glad, for it was Major Wynkoop coming to make peace. Left Hand stood with his hands folded across his breast, until he was shot saying, ``Soldiers no hurt me - soldiers my friends." One Eye was killed: was in the employ of Gov't as spy: came into the Post a few days before, and reported about the Sioux, were going to break out at Learned, which proved true.

After all the pledges made my Major A - to these Indians and then to take the course he did. I think as comments are necessary from me; only I will say he has a face for every man he talks. The action taken by Capt. Soule and myself were under protest. Col. A -- was going to have Soule hung for saying there were all cowardly Sons of B--s; if Soule did not take it back, but nary take back with Soule. I told the Col. that I thought it murder to jump them friendly Indians. He says in reply; Damn any man or men who are in sympathy with them. Such men as you and Major Wynkoop better leave the U.S. Service, so you can judge what a nice time we had on the trip. I expect Col. C-- and Downing will do all in their power to have Soule, Cossitt and I dismissed. Well, let them work for what they damn please, I ask no favors of them. If you are in Washington, for God's sake, Major, keep Chivington from being a Bri'g Genl. which he expects. I will send you the Denver Papers with this. Excuse this for I have been in much of a hurry.

Very respectfully,

Your Well-Wisher

(signed) Joe A. Cramer

John Smith was taken prisoner and then murdered. One little child 3 months old was thrown in the feed box of a wagon and brought one days march, and there left on the ground to perish. Col. Tappan is after them for all that is out. I am making out a report of all from the beginning to end, to send to Gen'l Slough, in hopes th at he will have

the thing investigated, and if you should see him, please speak to him about it, for fear that he has forgotten me. I shall write him nothing but what can be proven.

Major I am ashamed of this. I have it gloriously mixed up, but am in hopes I can explain it all to you before long. I would have given my right arm had you been here, when they arrived. Your family are all well.

(signed) Joe A. Cramer

Second letter

Ft. Lyon, C.T.

December 14, 1864

Dear Ned:

Two days after you left here the 3d Reg't with a Battalion of the 1st arrived here, having moved so secretly that we were not aware of their approach of until they had Pickets around the Post, allowing no one to pass out! They arrested Capt. Bent and John Vogle, and placed guards around their houses. They then declared their intention to massacre the friendly Indians camped on Sand Creek. Major Anthony gave all information, and eagerly Joined in with Chivington & Co, and ordered Lieut. Cramer, with his whole Co to Join the command. As soon as I knew of their movement I was indignant as you would have been were you here, and went to Cannon's room, where a number of officers of the 1st and 3d were congregated and told them that any man who would take part in the murders, knowing the circumstances as we did, was a low lived cowardly son of a bitch. Capt. Y.J. Johnson and Lieut Harding went to camp and reported to Chiv, Downing, and the whole outfit what I had said, and you bet hell was to pay in camp. Chiv and all hands swore they would hang me before they moved camp, but I stuck it out, and all the officers at the Post, except Anthony backed me. I was then ordered with my whole company to Major A-- with 20 days rations. I told him that I would not take part in their intended murder, but if they were going after the Sioux, Kiowa's or any fighting Indians, I would go as far as any of them. They said that was what they were going for, and I Joined them. We arrived at Black Kettles and Left Hand's Camp at day light. Lieut Wilson with Co's ``C", ``E" & ``G" were ordered in advance to cut off their herd. He made a circle to the rear and formed line 200 yds from the village, and opened fire. Poor Old John Smith and Louderbeck ran out with white flags but they paid no attention to them, and they ran back into the tents. Anthony then (indecipherable word) with Co's ``D" ``K" & ``G", to within one hundred yards and commenced firing. I refused to fire and

swore that none but a coward would. for by this time hundreds of women and children were coming towards us and getting on their knees for mercy. Anthony shouted, ``Kill the sons of bitches" Smith and Louderbeck came to our command, although I am confident there were 200 shots fired at them, for I heard an officer say that Old Smith and any one who sympathized with the Indians, ought to be killed and now was a good time to do it. The Battery then came up in our rear, and opened on them. I took my Comp'y across the Creek, and by this time the whole of the 3d and the Batteries were firing into them and you can form some idea of the slaughter. When the Indians found that there was no hope for them they went for the Creek, and buried themselves in the Sand and got under the banks and some of the bucks got their Bows and a few rifles and defended themselves as well as they could. By this time there was no organization among our troops, they were a perfect mob - every man on his own hook. My Co. was the only one that kept their formation, and we did not fire a shot.

The massacre lasted six or eight hours, and a good many Indians escaped. I tell you Ned it was hard to see little children on their knees have their brains beat out by men professing to be civilized. One squaw was wounded and a fellow took a hatchet to finish her, she held her arms up to defend her, and he cut one arm off, and held the other with one hand and dashed the hatchet through her brain. One Squaw with her two children, were on their knees, begging for their lives of a dozen soldiers, within ten feet of them all firing - when one succeeded in hitting the squaw in the thigh, when she took a knife and cut the throats of both children, and then killed herself. One old Squaw hung herelf in the lodge - there was not enough room for her to hang and she held up her knees and choked herself to death. Some tried to escape on the Prairie, but most of them were run down by horsemen. I saw two Indians hold one of anothers hands, chased until they were exhausted, when they kneeled down, and clasped each other around the neck and were both shot together. They were all scalped, and as high as half a dozen taken from one head. They were all horribly mutilated. One woman was cut open and a child taken out of her, and scalped.

White Antelope, War Bonnet and a member of others had Ears and Privates cut off. Squaws snatches were cut out for trophies. You would think it impossible for white men to butcher and mutilate human beings as they did there, but every word I have told you is the truth, which they do not deny. It was almost impossible to save any of them. Charly Autobee saved John Smith and Winsers squaw. I saved little Charley Bent. Geo Bent was killed. Jack Smith was taken prisoner, and murdered the next day in his tent by one of the Denn's Co. ``E". I understand the man received a horse for doing the job. They were going to murder Charlie Bent, but I run him into the Fort. They were going to kill Old Uncle John Smith, but Lt. Cannon and the boys of Ft. Lyon, interferred, and saved him. They would have murdered Old Bents family, if Col. Tappan had not taken the matter

in hand. Cramer went up with twenty (20) men, and they did not like to buck against so many of the 1st. Chivington has gone to Washington to be made General, I suppose, and get authority to raise a nine months Reg't to hunt Indians. He said Downing will have me cashiered if possible. If they do I want you to help me. I think they will try the same for Cramer for he has shot his mouth off a good deal, and did not shoot his pistol off in the Massacre. Joe has behaved first rate during the whole affair. Chivington reports five or six hundred killed, but there were not more than two hundred, about 140 women and children and 60 Bucks. A good many were out hunting buffalo. Our best Indians were killed. Black Kettle, One Eye, Minnemic, and Left Hand. Geo. Pierce of Co. "F" was killed trying to save John Smith. There was one other of the 1st killed and nine of the 3d all through their own fault. They would get up to the edge of the bank and look over, to get a shot at an Indian under them, and get an arrow put through them. When the women were killed the Bucks did not seem to try and get away, but fought desperately. Charly Autobee wished me to write all about it to you. He says he would have given anything if you could have been there.

I suppose Cramer has written to you, all the particulars, so I will write half. Your family is well. Billy Walker, Col. Tappen, Wilson (who was wounded in the arm) start for Denver in the morning. There is no news I can think of. I expect we will have a hell of a time with Indians this winter. We have (200) men at the Post - Anthony in command. I think he will be dismissed when the facts are known in Washington. Give my regards to any friends you come across, and write as soon as possible.

Yours sc.

(signed) S.S. Soule

LIB2

Caption: This letter from Lt. Joseph Cramer, a witness, to Maj. Ed Wynkoop, his commanding officer, was written within three weeks of the Sand Creek Massacre. By Steve Peterson / Special to the News. FILE: ARCHIVE. HARD COPY: PETERSON - SHOOT  
DATE 2000: 9/14

All content herein is © 2000 DENVER ROCKY MOUNTAIN NEWS

and may not be republished without permission. [Editor's note: SKA has a letter of permission on file from the Denver Rocky Mountain News to republish this article on a one-time basis in the newsletter.]



## Share your genealogy with the Kindred

The following four pages are an example (next two pages) and a blank form (the two pages after that) that you may wish to use to send to the Soule Kindred information on yourself and your ancestry. Please send to historian Charles J. Sowles, PO Box 329, St. Francisville, IL 62460.

Soule Kindred	
	11th Generation      POTEKHEN Family
Soule Descendant	TATIANA JEAN POTEKHEN
Ancestral Line	(Tatiana Jean Potekhen <sup>11</sup> , Nancy Edna Sowle <sup>10</sup> , Claude <sup>9</sup> , Harvey <sup>8</sup> , Hiram <sup>7</sup> , Wesson <sup>6</sup> , James <sup>5</sup> , Wesson <sup>4</sup> , Nathaniel Soule <sup>3</sup> , Nathaniel <sup>2</sup> , George <sup>1</sup> )
Parentage	son/dau of George Paul and Nancy Edna (Sowle), Potekhen
Birth or Baptism	was b. 10 June 1949 at Plainfield, Union Co., NJ
Death	died living 1986 at
Burial	buried at _____ Cemetery
Residences and removals	Resided Plainfield, NJ, Cincinnati, OH, Corning, NY, Silverthorne, CO
Occupation	Travel Agent
Military service	
Other biographical data	Graduate Ohio University, Athens, OH 1971; Moved to Colorado to do post-graduate work at Colorado State University in Fort Collins; moved to Silverthorne, CO 1975. Tania & Ron owned a restaurant-bakery in Dillon, CO, contractin business in Silverthorne, and after spending three months in Mexico with their family in 1985, they opened a travel agency - "Teke Tours"
	He/She married RONALD LOUIS TEKE
	on 11 September 1971 at Athens, Athens Co., OH
Parentage	son/dau of Ralph Harold and Mary Elizabeth (Rodenburg), Teke
Birth or Baptism	He/She was b. 6 March 1950 at Cincinnati, Hamilton Co., OH
Death	and died living 1986 at
Burial	buried at _____ Cemetery
Biographical	Occupation: Building contractor; travel agent & guide See above
Other marriages	No other marriages for either of the above

(OVER)

Names in full, date and place of birth, marriage, death, and to whom married

Children of Ronald Louis and Tatiana Jean (Potekhen) Teke

(1) Jennifer Elizabeth b. 28 October 1978 Denver, CO

(2) Christopher Louis b. 1 Feb 1980 Denver, CO

This record was compiled by Geraldine Sowle Schlosser

of Route 3, Box 53, Tomah, WI 54660 Date 2 July 1986

Sources of data Marriage, birth announcements; interview (phone) with Tania (Tatiana) Potekhen Teke, Silverthorne, CO, 2 July 1986

Verified by \_\_\_\_\_

Soule Kindred

\_\_\_\_\_ Generation \_\_\_\_\_ Family

Soule Descendant \_\_\_\_\_

Ancestral Line ( \_\_\_\_\_ )

Parentage son/dau of \_\_\_\_\_ and \_\_\_\_\_ ( \_\_\_\_\_ )

Birth or baptism was b \_\_\_\_\_ at \_\_\_\_\_

Death died \_\_\_\_\_ at \_\_\_\_\_

Burial buried at \_\_\_\_\_ Cemetery

Residences and removals Resided \_\_\_\_\_

Occupation \_\_\_\_\_

Military service \_\_\_\_\_

Other biographical data \_\_\_\_\_

\_\_\_\_\_

He/She married \_\_\_\_\_

on \_\_\_\_\_ at \_\_\_\_\_

Parentage son/dau of \_\_\_\_\_ and \_\_\_\_\_ ( \_\_\_\_\_ )

Birth or Baptism He/She was b \_\_\_\_\_ at \_\_\_\_\_

Death and died \_\_\_\_\_ at \_\_\_\_\_

Burial buried at \_\_\_\_\_ Cemetery

Biographical \_\_\_\_\_

\_\_\_\_\_

Other marriages \_\_\_\_\_

\_\_\_\_\_

\_\_\_\_\_

(OVER)



## E-MAIL ADDRESSES

NAME	E-MAIL ADDRESS	OTHER INFORMATION
Allstott, Maria Elana Soule	allstot@gte.net	2000 reunion host
Bishop, Robert	RmBishop@aol.com	<i>Soule Kindred</i> President
Buchholz, Eugene	buchholz@powerweb.net	
Campbell, Clay D.	WYNTER1213@aol.com	Haskell, Pain, Farrow lines
Carpenter, Nathan	Ncarpenter1@juno.com	
Castro, Patricia	kearneysearch@worldnet.att.net	
Clark, Ann and/or Tom Watkins	acmeannie@redshift.com	
Colwell, William N.	Mec10wnc@aol.com	
Cook, Elizabeth	Cookkin@aol.com	
Croteau, Beatrice	hankc@valstar.net	
Detling, Douglas G.	ddetling@greencity.org	
Gaudlitz, Lauren	lrg_larson@hotmail.com	
Gebert, Pat and Wes	pagebert@aol.com	
Gipson, Mrs. Donald E. (Jane)	gipson@grrtech.com	
Godreau, Carol	cgodreau@neuron.uchc.edu	
Hall, Mary Susan	glasshall@aol.com	Jenkins & Dunham surname links to Soule
Hall, Ruth E.	ruthhall@worldnet.att.net	Webmaster
Hannon, Ruth	rflare@att.net	researching gr-grandmother Eliza Soule
Healy, Chuck	cehealy@aol.com	<i>Soule Kindred</i> newsletter editor
Herring, Joann Rhome	quiltetu@aol.com	
Hill, Christine	jhill1@kscable.com	[note: jhill(one)]
Johnston, Barb	fussfoot@aol.com	
Johnston, Pat	Patticak25@aol.com	
Keldgord, Robert "Bob" E.	SacChief@aol.com	Soules from Kalamazoo and Calhoun Counties, MI
Kenyon, Russel W.	rkenyon@prodigy.net	Kenyon, Burdick, Babcock, Crandall, Canfield, Livermore, Soule research
Kreger, Lewis	Lkreger60@aol.com	William "The Loyalist" Soule research
Kruse, Brian L.	ekruse@internetni.com	
Lowman, Carolyn Soule	lowman@greencafe.com	
Maddux, C. J.	cmaddox@sitevision.com	Mayflower web site
MacDonald, R. Andrew	andymac1@concentric.net	
Nielsen, Eloise	hnielsen@hrn.bradley.edu	
Parrott, Mike	MLParr514@aol.com	
Richardson, Mrs. Diane L.	drieh@arwest.com	
Robertson, Muriel Soule	SouleSearcher@aol.com	
Rocke, Margaret "Peg"	PegRocke@aol.com	<i>Soule Kindred</i> secretary
Schlosser, Christine	cschloss@expec.com	<i>Soule Kindred</i> Past President
Saario, Dianna	dsaario@mediaone.net	
Schlosser, Gerry Sowle	gsoelesch@aol.com	
Sheldon, Robert	bobsheldon@compuserve.com	Sole research, <i>The Sole Society</i> - United Kingdom
Shepherdson, Nancy	sjnanner@compuserve.com	
Soule, Frank Flint	ffsoule@uop.com	
Soule, Gary M.	garysoule@prioritymanagement.com	
Soule, Sharon G.	dsoule@coffey.com	
Soule, Thomas Fry, Jr.	JeSoule@aol.com	
Soule, Willis	soulewf@dot.state.sc.us	
Soules, Bob	soulesbob@aol.com	

Soules, Harry F., Jr.	hfsoules@hotmail.com	
Soules, Les	lessoules@juno.com	
Standish, Norman	standish@aeronic.net or Nstandish@aol.com	
Trask, Paul	ptrask@att.net	
Turner, Paula J.	wht@netsightsinc.com	
Verdoorn, Joan	verdoorn@inreach.com	http://home.inreach.com/verdoorn
Vessely, Pat	vessely@hevanet.com	
Wagenknecht, Walter Chappell	wagenwal@aol.com	
Wallace, Bob & Barbara	babspenwow@aol.com	
Yaezenko, Suzette	suzette@moscow.com	
Zopff, Thomas M.	zopff@go-concepts.com	

**E-MAIL MESSAGES**

**Subj:** Soule Census  
**Date:** 8/23/00  
**From:** ffsoule1@juno.com (Frank F Soule)

I would like to put out a call for information on Census records for all spellings of "Soule" Soule,Soles,Sowles,etc.) I am planning to use this to assist researchers querying on this newsletter as well as The Soule Kindred in America, Inc.

A typical record would be:

Soule; Freelove CENS 1860 Clear Lake Steuben Co.,IN, p.642

Yes, "Freelove" Soule did exist! Bish , Recompense, Valentine, Ivory, Canstet, Temperance, Mirlke, Darkish, Teters, Jantley, Surpherimus, Experience and others were all real ancestors. There are, of course, many Georges, Williams and Johns.

There are all kinds of interesting names in my 3,638 record database. I may have most known records for 1790 to 1870. I need more records from the South, Pacific Northwest and from all regions for 1870,1880 and early 20th century to 1920. I can use state Census records as well as the Federal records.

Any assistance would be appreciated even if it is a fragment.

Thanks,  
 Frank F. Soule

\*\*\*\*\*

**Subj:** Surpherimus D. Sowle  
**Date:** 8/25/00  
**From:** ncarpenter1@juno.com (Nathan K. Carpenter)

Surpherimus D. SOWLE, b.abt 1827, prb. Montgomery co., NY, s/o Durfee and Margaret SOWLE. Married at least twice, the last time (I know about) to

Sarah TABOR, 19 May 1875 in Steuben co., IN. Looking for Surpherimus (Surphremus) after 1880, also any information on any children he may have had.

Nathan Carpenter  
 NCarpenter1@juno.com

\*\*\*\*\*

**From:** Frank F Soule <ffsoule1@juno.com>  
**To:** horseman110@worldnet.att.net  
**Date:** Wed, 23 Aug 2000  
**Subject:** Re: Olive Soules

Alas the only Olive Soules that I have are listed in different counties; Dutchess Co, Franklin Co. Maine, Mille Lac Co.,MN.

It is exceedingly tough to find females in census records listed in their own name. I am asking respondents to provide me with daughters and sons names that are found in the 1850 and on census records. I had luck finding my sixth generation ancestor by obtaining a copy of my g-g-grandfather's death certificate (John Soule 1818-1885) Clearly listed at the bottom were his parents William and Dora "Soles" (note the last name spelling variation) William Soles lived from 1789-1852 and is listed in many census records under "Sole" or "Soles". His son John was listed in the 1850 census as "John Soal"

Have you tried to get a death certificate for your g-g-grandmother?

Also, I am a member and Director of The Soule Kindred In America, Inc. a nonprofit organization. For a very modest membership fee of \$15 you get a quarterly bound and informative newsletter with information. (not just 2 or three sheets crudely done) You also can check with the Soule Kindred historian who has an amazing tonnage of information. You need not be a "Soule" or even have a Soule ancestor to join. Through the Kindred I have been able to trace my line back to George Soule of the

Mayflower and consider myself to be a direct descendant. This census database that I am compiling is for that societies usage as well as those who ask me. After all the records should be available to everyone. If I can be of further assistance please let me know. Your most Obt. servant, I remain  
Frank Flint Soule

My name is Dick Grennell, I am searching for the parents of my 2x grandmother Olive Soules, b:1828, in Sterling Center , Cayuga Co.,NY. she died March 25, 1891, and is buried at Mount Pleasant Cemetery , in Sterling Center. Olive was married to John M. Smith, and had three children, do you have anything on this Olive Soule(s) in your records? I have hit a brick wall, even in the Soule(s) webpage.  
Any help will be greatly appreciated.

Thank You:  
Dick

\*\*\*\*\*

**Subj:** New Soule MFIP  
**Date:** 8/30/00  
**From:** roser@globalserve.net (S. Roser)  
**To:** MAYFLOWER-L@rootsweb.com

Edie Bates Thomas, Director of the Five Generations Project has announced a new publication.

This is a new Soule 4 generation book, covering the 5th AND 6th generations of George Soule's son, John2 Soule ONLY; similiar MFIPs will be printed in the future for George Soule's other children.

Price is \$10.00 - go to www.mayflower.org for ordering instructions.

Susan

\*\*\*\*\*

**Subj:** Soule/Hamilton  
**Date:** 9/4/00  
**From:** Nealegd@aol.com  
**To:** MAYFLOWER-L@rootsweb.com

Hello,  
I am interested in contacting anyone who is researching the George Soule descendency. In particular his descendant Deborah Soule who married Ambrose Hamilton on 28 Apr 1763, according to MF v3 (see page 172).

Thank you,  
Sally Neale

\*\*\*\*\*

**Subj:** Edith Soule  
**Date:** 9/18/00  
**From:** Wizzaerd@aol.com

Does anyone have an Edith Soule? See forward [below].

Claudia Day

Hi my name is Tabitha BLOdgett and my ggrandmother was Edith Soules I believe she was born in Ravenna Mi. I was wondering if you could help. Her bday was Sept.26, 1894 thank you.

\*\*\*\*\*

**Subj:** [Fwd: John Edward Soule]  
**Date:** 9/21/00  
**From:** ruthhall@worldnet.att.net

Received this and thought someone on the list may be interested in it. Contact the sender directly. Thanks  
Ruth

Hi Ruth , I am a geneologist but not interested in your family. But yesterday I was in a silver rafishers shop and there was a beautiful silver Christening cup for John Edward Soule, July 11, 1902. I think it belongs in your family somewhere can you connect me to the right person to give the info to on the shop so they can get in touch with them. It should come back into your family. My phone is 513 748 0351 and you have my email.Michelle Bell

\*\*\*\*\*

## Kindred Membership

### Errata

Last quarter's newsletter listed the names of the SKA membership as of the time we went to press. While we were at press and since then, others have joined with us. Their names are listed below.

Rowan J. S. Bishop  
Nathan Carpenter  
Harry Leslie Devoe, Jr.  
Robert and Diane Diaz  
Wesley Gebert  
Mrs. Edwin S. Harris  
Prof. Leslie Hope  
Mrs. Christine Lee Hornsworth  
Genevieve Johnson

Sandra Knopf  
Lynn Morrell  
Jeannine Short  
Shirlene Sloan  
Hayden Philip Soule  
Judith L. Soule  
Charles W. Soules  
Lori Soules  
Danita Morrison Troglio

\*\*\*\*\*



## Volunteers Wanted!



**to conduct Soule Kindred Membership Campaigns within States or Regions  
by contacting State Mayflower Society Members who are Soule descendants,  
Soule surname families, and Soule descendant relatives of current members.**

*Contact President Bob Bishop at address shown on inside front cover.*

\*\*\*\*\*



SOULE KINDRED MEMBERSHIP FORM

The Soule Kindred In America was formed in 1967 by a group of dedicated people who were interested in preserving and passing information on to future generations. . The Soule Kindred is a non-profit organization incorporated in Massachusetts in 1972. Through the diligence of the first president George Soule and Colonel John Soule, direct descendants of the Mayflower George Soule, a great heritage was found to have been left by our founding fathers.

Through the Soule Kindred quarterly publication, *Soule Newsletter*, information of genealogical value is disseminated to its members. Reading back issues of the *Soule Newsletter* is like walking through American and European History, after all, Europe is where most of our ancestors lived. Current news items about Soule Kindred members' activities bring "cousin to cousin" closer.

Genealogy records are available through the Soule Kindred historian to assist those interested in tracing their family roots. The Soule Kindred has microfilm records containing hundreds of names and information back to the Mayflower passenger George Soule.

Soule Kindred membership lists are published annually leading you to a whole new world of "cousins."

The annual Soule Kindred Reunion, held in a different city each year, offers an opportunity to meet your new "cousins" and make long lasting friendships.

There are no restrictions to joining the Soule Kindred. Your name does not have to be Sole, Soule, Sowle, Soules, or even begin with an "S." We have Jones, Abraham, Boyd, Edwards, Myers, Turner and many other names in our membership.

If the idea finding your roots and meeting new "cousins" appeals to you, we invite you to send in your application and join with us in researching and celebrating our fascinating heritage.

Please send this membership application along with a check made payable to Soule Kindred In America, Inc. To:

Betty Jean Haner, Treasurer  
53 New Shaker Road  
Albany, NY 12205-3615

Student (to age 22)	\$7.50
Regular Membership	\$15.00
Sustaining Membership	\$25.00
Patron Membership	\$50.00
Life Membership	\$200.00

Please enter my membership to the Soule Kindred In America, Inc. Enter your name and address as you wish it to appear on the *Soule Newsletter* mailing label.

NAME \_\_\_\_\_

STREET ADDRESS \_\_\_\_\_

CITY \_\_\_\_\_ STATE \_\_\_\_\_ ZIP \_\_\_\_\_

Introduced by: \_\_\_\_\_

**MEMBERS:** Please make extra copies of this introduction and pass them out to interested people. Be sure to include your name in the "Introduced by:" area.

**NEW MEMBERS:** If you have not yet received a New Member packet containing letter, by-laws, family data sheets and membership card, please notify Betty Jean Haner at the address above.

# AUTOMOBILE DEPT.

148

DETROIT CITY DIRECTORY.

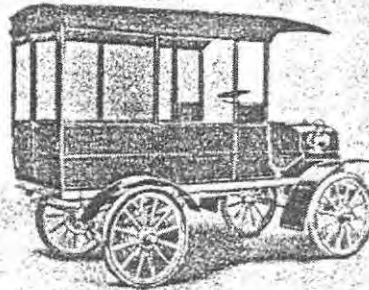
## SOULES & WELCH MOTOR CAR CO.

WM. E. V. NEUMANN, Mgr.

The **BAKER ELECTRIC**  
THE ELECTRIC OF QUALITY

**WELCH TOURING CAR  
AND LIMOUZINE**

The Best that Good Material and Work-  
manship can produce.



**SOULES DELIVERY WAGON**

Built for Service and Economy

**736-740**

**Woodward Avenue**

WE FURNISH

### LISTS OF NAMES

**UP-TO-DATE ANY BUSINESS---ANY LOCALITY ACCURATE**

We can also print your envelopes and advertising matter, address your envelopes or wrap-  
pers, fold, enclose and mail your circulars.

We publish over 250 City, County, State and National Directories; therefore have unexcelled  
facilities for furnishing lists or addressing envelopes to any trades and professions that are not  
covered by our National Trade Directories.

#### AS DIRECTORY PUBLISHERS

we have available the manuscript matter that we intend utilizing in directories being compiled  
and therefore can **ADDRESS YOUR ENVELOPES FROM UP-TO-DATE INFORMATION  
BEFORE IT APPEARS IN TYPE** and consequently **BEFORE IT IS IN THE  
HANDS OF FIRMS WHOSE BUSINESS IS SOLELY FURNISHING LISTS OF  
NAMES**. It costs us more to compile lists from our advance manuscript Directory informa-  
tion, but for every extra dollar you pay for lists in advance of publication **YOU SAVE TEN  
DOLLARS IN POSTAGE**.

Price lists and prospectus of any of our National Publications and Trade Lists sent on  
application.

**R. L. POLK & CO., Directory Publishers,  
DETROIT, MICH.**

#### DISTRICT OFFICES:

Baltimore	Des Moines	Jacksonville	New York	St. Louis	Spokane
Birmingham	Duluth	Los Angeles	Philadelphia	St. Paul	Superior
Butte	Erie	Memphis	Pittsburg	Salt Lake City	Tacoma
Chicago	Ft. Wayne	Minneapolis	Portland, Ore.	Seranton	Toledo
Col. Springs	Grand Rapids	Mobile	Pueblo	Seattle	Wheeling
Columbus	Indianapolis	Nashville	St. Joseph, Mo.	Stoux City	Wilkesbarre



## SOULE KINDRED NEWSLETTER ORDER FORM

1967 - 1990 issues - \$2.50 per issue; \$10.00 for 1 year of issues  
1991 - present issues - \$3.75 per issue; \$15.00 for 1 year of issues

Complete sets are available for \$125.00 (excluding copies not listed below) plus \$10.00 shipping in the US. Copies not listed below can be copied at a cost of 5 cents per page plus collating and stapling charges.

I enclose \$ \_\_\_\_\_ for \_\_\_\_\_ copies of back issues as checked.

1967-V. 1	#1( )		#3( )	1984-V. 18	#1( )	#2( )	#3( )	#4( )	
1968-V. 2	#1( )	#2( )	#3( )	1985-V. 19	#1( )	#2( )	#3( )	#4( )	
1969-V. 3	#1( )	#2( )	#3( )	1986-V. 20	#1( )	#2( )	#3( )		
1970-V. 4			#3( )	1987-V. 21	#1( )	#2( )	#3( )	#4( )	
1971-V. 5	#1( )	#2( )	#3( )	1988-V. 22	#1( )	#2( )	#3( )	#4( )	
1972-V. 6		#2( )	#3( )	#4( )	1989-V. 23	#1( )	#2( )	#3( )	#4( )
1973-V. 7	#1( )	#2( )	#3( )	#4( )	1990-V. 24	#1( )	#2( )		#4( )
1974-V. 8	#1( )	#2( )	#3( )	#4( )	1991-V. 25	#1( )	#2( )		#4( )
1975-V. 9	#1( )	#2( )	#3( )	#4( )	1992-V. 26	#1( )	#2( )	#3( )	#4( )
1976-V. 10	#1( )	#2( )	#3( )	#4( )	1993-V. 27		#2( )		
1977-V. 11	#1( )	#2( )	#3( )	#4( )	1994-V. 28	#1( )	#2( )	#3( )	N/A
1978-V. 12	#1( )	#2( )	#3( )	#4( )	1995-V. 29		#2( )		N/A
1979-V. 13	#1( )	#2( )	#3( )	#4( )	1996-V. 30	#1( )	#2( )	#3( )	N/A
1980-V. 14	#1( )	#2( )	#3( )	#4( )	1997-V. 31	#1( )	#2( )	#3( )	#4( )
1981-V. 15	#1( )	#2( )	#3( )	#4( )	1998-V. 32	#1( )		#3( )	#4( )
1982-V. 16	#1( )	#2( )	#3( )	#4( )	1999-V. 33			#3( )	#4( )
1983-V. 17	#1( )	#2( )	#3( )	#4( )	2000-v. 34	#1( )	#2( )	#3( )	#4( )

Send this form along with your check made payable to Soule Kindred In America, Inc., to:

Betty-Jean Haner  
53 New Shaker Rd.  
Albany, NY 12205-3615

NAME \_\_\_\_\_  
STREET ADDRESS \_\_\_\_\_  
CITY \_\_\_\_\_ STATE \_\_\_\_\_ ZIP \_\_\_\_\_



House, The General Society of Mayflower Descendants, Plymouth, Massachusetts, June 1998



SOULE KINDRED IN AMERICA, INC.  
53 NEW SHAKER ROAD  
ALBANY, NEW YORK 12205-3615

NON-PROFIT ORG.  
U.S. POSTAGE  
**PAID**  
ST. LOUIS, MO  
PERMIT No. 4384

ADDRESS SERVICE REQUESTED

CHARLES J SOWLES  
PO BOX 329  
ST FRANCISVILLE, IL 62460