



# SOULE NEWSLETTER

LIBRARY OF CONGRESS: No. C371, VOL. XXXIV NO. 3, AUGUST, 2000



Betty-Jean Haner at Soule Kindred Reunion 2000

## **Soule Kindred in America, Inc.**

53 New Shaker Road, Albany, NY 12205-3615

518 869 8368

Web Site: <http://www.homepages.rootsweb.com/~ruthhall/Soule/Sksoulekindred.html>

### Governance

- President** - Robert M. Bishop, Apr-Nov 16 Heritage Lane, Scotch Plains, NJ 07076-2420, Phone & Fax 908 322 6680; Dec-Apr 311 E. Walnut St., Avon Park, FL 33825, Phone & Fax 863-453-3387; RmBishop@aol.com
- 1st Vice-President** - Willis F. Soule, 114 Coronado Road, West Columbia, SC 29269, 803-356-0702; soulewf@juno.com
- 2nd Vice-President, Director 00** - Norman W. Standish, 540 West Carroll St., Lanark, IL 61046; Phone 815-493-2307; Standish@aeronic.net
- Secretary** - Margaret A. Roche, 2208 Nevara Ave., Vero Beach, FL 32960, 561-569-5268; PegRoche@aol.com
- Treasurer** - Betty-Jean Haner, 53 New Shaker Road, Albany, NY 12205-3615, 518-869-8368
- Director 00** - Carol Godreau, 33A Rita Dr., Bristol, CT 06010, 860-585-1710; cgodreau@neuron.uchc.edu
- Director 00** - Barbara Johnston, PO Box 68, North Granby, CT 06060-0068, 860-653-7969; fussfoot@aol.com
- Director 01** - Patricia A. Johnston, 7401 Willow Rd., #363, Frederick, MD 21702, 301-644-5894; pattcak25@hotmail.com
- Director 01** - Lee Manausa, 235 Palo Verde Dr., Leesburg, FL 34748-8801, 352-326-9221; clmanausa@lcia.com
- Director 01** - Barbara E. Wallace, May-Oct: 3699 Eastview Dr., Traverse City, MI, 49684; Nov-Apr: 14972 S.W. 112<sup>th</sup> Circle, Dunnellon, FL 34432-8781; babspenwow@aol.com
- Director 02** - Christine M. Hill; 2402 Kipling Pl., Hutchinson, KS 67502; Phone 316-663-7288; jhill1@kscable.com [note: jhill(one)]
- Director 02** - Geraldine Schlosser; 4654 N. 108<sup>th</sup> St., Wauwatosa, WI 53225; gsowlesch@aol.com
- Director 02** - Frank Flint Soule III; 1413 Dorothy Dr., Palatine, IL 60067; 847-991-7923; ffsoule@uop.com

### Administration

- Assistant Treasurer** - Harrison C. Leland, 225 Consaul Rd., Albany, NY 12205, 518-869-6418
- Counselor** - James R. Tiffin, Tiffin & Tiffin, 160 Federal St., Boston, MA 02110, 617-330-9001; TiffinVMF@aol.com
- Historian** - Charles J. Sowles, PO Box 329, St. Francisville, IL 62460, 618-948-2286; twolions@shawneelink.com
- Newsletter Editor** - Chuck Healy, 810 Mariner's Point Dr., Creve Coeur, MO 63141, 314-542-0587; cehealy@aol.com
- Reunion Host 2000** - Maria Elana Allstott, P. O. Box 2512, Ventura, CA 93002, 805-983-6925; Allstott@gte.net
- Membership** - Betty-Jean Haner (See Treasurer, above); Robert Soules, 2099 Arroyo Dr., Riverside, CA 92505-1659
- Scholarship Committee** - Betty-Jean Haner (see above), Harrison C. Leland (see above), and Mrs. Edwin S. Harris, 7711 Broadway St. #8B, San Antonio, TX 78209, 210-930-6252
- Reunion Future Planning Committee** - Barbara Johnston and Carol Godreau (see left for both)
- Webmaster** - Ruth E. Hall, 1128 Carrington St., Toledo, OH 43615-4161, 419-865-6472; ruthhall@worldnet.att.net

## News from President Bob Bishop

Excerpts from the Diary of my Wife, Anne

Wednesday, July 5, 2000 – We arose at 4:30 am to start our journey to California, via Los Angeles. Arriving at Santa Barbara we found their airport lovely with beautiful flowers. Then 26 miles by rental car to the Holiday Inn, Ventura, where surprisingly cool breezes were blowing from the Pacific. Fellow members of the Soule Kindred began to gather in a reception room.

Thursday, July 6 – Awoke to a view of the ocean.

After breakfast, 25 members gathered on a bus to tour Santa Barbara. The city exceeded even its airport in beauty of architecture, greenery, flowers and sky. Our guide, a resident for 22 years with depth of historic perspective, was great! Besides touring city streets downtown, in various residential sections, on the adjacent mountainsides, we stopped at the magnificent Court House and the Santa Barbara Mission for walking tours. Lunch was in a small restaurant serving in a downtown block's interior courtyard.

Friday, July 7 – Robert spent the morning at an informal meeting of the Board members present.

At 1:30 pm, we were back on the bus for what we anticipated would be the highlight of the Reunion, a trip south of Los Angeles to what I thought of as the Getty Art Museum. It turned out to be the Getty Center, with far broader programs than art.

Perched massively atop a steep mountain, access is by a shuttle train that climbs to the Center. Friendly hospitality was apparent – scores of wheelchairs, hundreds of tan umbrellas for shade, volunteer docents. We were surprised to be told by a guide that people came to see the Center primarily for its architecture which is striking, its views which are spectacular, and its garden which is lovely and serene.

We found the rooms of paintings featuring VanGogh's "Iris" well worth visiting. A special exhibit of photographs of 19<sup>th</sup> Century France ended my romantic notions of that period. Time and energy ran out without our visiting the illuminated manuscripts, sculpture, decorative arts, etc. Altogether a nice adventure.

Saturday, July 8 – The most important day – the Annual Meeting in Soule Park in Ojai, a half hour inland from Ventura.

Our host, Maria Elana Allstott, had gone all out to plan a most enjoyable day, which attracted 75 adults and 14 children. Soule Park turned out to be quite beautiful and very well cared for by the county. The history and public spirit of the Soule family was dramatized by an impersonator of its donor, Zaidee Soule, the last survivor of the two generations that lived and died there. She kept the adults and children in rapt attention.

There were prizes (including a patch work quilt autographed by all present), games and crafts (I have a wreath which I am finishing), a catered lunch (with London broiled beef and barbecued chicken prepared on the site with green and pasta salads, corn bread, brownies and assorted drinks).

I will rely on the Secretary's minutes of the Member's Business Meeting for my memories of that event.

Sunday, July 9 – Up at six again. Back to Santa Barbara airport. In the air to San Francisco before noon. Then the long flight to Newark. Arrived home in the late evening, tired but thoroughly pleased with those memorable days and with our thanks to Maria Elana.

### **Mayflower Five Generations Project on Soule Descendants in Pre-Publication Draft.**

The series of booklets known as "Mayflower Families in Progress" plans six such publications to cover the fifth and sixth generations from George Soule. The first will be in pre-publication format this month with probable publication later this year.

The principal researcher for this Soule genealogical series is Louise Walsh Throop, 12087 Ruth Glen, Sunol, CA 94586. LWTHROOP@aol.com.

Soule Kindred has offered its communications and research facilities to aid Mrs. Throop. Among her needs are:

1. Correspondence from members on their fifth and sixth-generations data. E-mail is preferred from those on line.
2. Assistance in searching on the county level in local records in New York State.
3. Existing research on the North Carolina-Alabama-etc. Soules.

This project extends researched publications of the General Society of Mayflower Descendants, adding to the currently published "George Soule of the Mayflower and His Descendants for Four Generations", originally compiled by Col. John E. Soule and Milton E. Terry as Soule Kindred founders.

Publication sales details will be published in the Mayflower Quarterly when available.

### **Life Members**

Congratulations and thanks to our 117<sup>th</sup> Life Member, Dr. Charles Sowle Price, a physician in Reno, NV.

Proceeds of Life Memberships are designated for future scholarships.

### **Review of Treasurer's Report**

Pursuant to the Board's interpretation of Article IX, Section 2 of the Soule Kindred by-laws, I reviewed the Annual Report of the Treasurer for the period July 23, 1999 to June 1, 2000 and copies of supporting records.

The Treasurer supplied me with the following documentation: 1) a computerized worksheet of checking account receipts in eight categories, 2) copies of the handwritten checkbook entries for the same expenditures, 3) copies of each of the Trustco Bank passbook pages for each of the nine operating, scholarship, and bequest reserve accounts, 4) copies of the Trustco Bank monthly statements of 8/18/99 to 5/17/00, each with copies of cancelled checks and deposit slips, and documentation supplied by the Historian for his petty cash expenditures.

I found these records consistent with each other and reconciled. I recognized the appropriate purposes of the checks. The Treasurer deserves our compliments for a careful and complete accounting of our finances.



## *Editor's Corner*

By the time some of you receive this quarterly newsletter, the annual summertime reunion will have come and gone. In fact, we decided to delay it's printing a few weeks so that we might include some of the reunion information and pictures. Many, many thanks to Maria Elana for a tremendous effort.

Our President, Bob Short, thought that one of the things we ought to do in this month's newsletter is make a bit of a fuss over the fact that Betty-Jean Haner has served with distinction as the Soule Kindred treasurer for some thirty years now. I concur. I have not yet met Betty-Jean, but we have corresponded on numerous occasions over the past couple of years while I have been the newsletter editor. Based on that interaction, I think she deserves a great deal of thanks from all of us. Her work for the Kindred is tireless (If she disputes this point, then she hides her exhaustion well!) and constant. And, of course, it is voluntary, which should make her continued service all the more appreciated. So, if you have a mind to do so, please drop Betty-Jean a thank you note when you get a moment.

So, back to the reunion. Enclosed are some items usually associated with the reunion, including the treasurer's report and minutes of the meeting. Also, there are several pages of pictures that were kindly provided by Peg Rocke, Barbara Granum, and Chris Hill.

By request, I have included a listing of Soule Kindred members that is as up-to-date as I have it. I have not, of course, included addresses for anyone for privacy's sake. I will try to remember to publish this listing on an annual basis. If you are aware of someone who is a member and whose name is not on the listing, please let Betty-Jean or me know so we can fix our records. And, as our membership chairman Bob Soules would say, if you know of someone who is not listed and is not yet a member of the Kindred but should be, please make use of the membership application form and have them join with us.

## Obituaries

These two obituaries on the left were received from Anna Bristol (see pages thru below). She obtained them from the Toledo, Ohio *Blade*. The one on the right is from *The Daily Gazette* in Schenectady, New York.

### **Vera (Soule) Michelson**



Vera (Soule) Michelson, 89, of Sylvania, OH, passed away Tuesday, February 8, 2000 at the Spring Meadows Extended Care Facility. She was born September 8, 1910 in Dayton, OH to Roy O. and Ida (Peters) Soule.

She was a bookkeeper with Maumee Fabrics for more than 18 years, retiring in 1973. Vera served with the Waves during WW II in San Francisco, CA. She was a long and active member and Sunday School teacher at the Faith Evangelical Lutheran Church.

Vera is survived by her husband, Erro A. Michelson; daughter, Kristina Moazed; and grandson, Ali M. Moazed.

Friends are invited to gather at the Faith Evangelical Lutheran Church at 1:30 p.m. Sunday, February 13th where memorial services will begin at 2 p.m.

Those wishing to give memorials are asked to consider the Faith Evangelical Lutheran Church or the Alzheimer's Association.

### **Alice Mason Mumford Soule**

Alice Mason Mumford Soule, 72, died February 25, 2000, in Tucson, AZ, following a series of strokes. Born and raised in Evanston, IL, she graduated from Smith College, Northampton, MA in 1949. She lived on River Road in Toledo from 1962 to 1973 and was active in the Junior League and as a volunteer for the Toledo Museum of Art.

She leaves her husband, Donald Thayer Soule of Tucson; a brother, Manly W. Mumford of Chicago; six sons, Whitman and Winslow Soule of Evanston, IL, Mason Soule of Dublin, OH, John Soule of Glenview, IL, Nathaniel Soule of Ramona, CA and Henry Soule of Campo, CA, and six grandchildren.

*Schenectady, NY*

Saturday, April 8, 2000

THE DAILY GAZETTE

### **Doris Soules**

ILION — Mrs. Doris Soules, 76, formerly of Gloversville, died Friday at the Mohawk Valley Nursing Home.

Born in Gloversville, Mrs. Soules was a longtime resident. She lived at the Mediplex Rehabilitation Center in Lowell, Mass., and became a Mohawk Valley Nursing Home resident in August 1994.

She was educated in Gloversville schools.

Mrs. Soules worked as a glove maker at several area firms.

Her husband, Samuel H. Soules Sr., died in 1961.

Survivors include a daughter-in-law, Diana E. Soules and a granddaughter, Michele L. Porter, both of Broadalbin.

Cremation will be at the Parkview Crematorium in Schenectady.

There are no services or calling hours.

Entombment, at a later date, will be in Fern Dale Cemetery, Johnstown.

Memorial contributions may be made to the Mohawk Valley Nursing Home, 99 Sixth Ave., Ilion, NY 13357.

Arrangements are by the Robert M. Halgas Funeral Home, Broadalbin.

from: Mrs. Pauline Hornberger

Friday, June 2, 2000

THE PHILADELPHIA INQUIRER

## Obituaries

# Marjorie Van Horn, 99, Mayflower descendant

By Herb Drill  
INQUIRER SUBURBAN STAFF

Marjorie K. Van Horn, 99, a retired nonprofit agency administrator and a Mayflower descendant, died Monday in the medical facility of the Rydal Park retirement community in Abington, where she lived.

A Jersey City, N.J., native, Miss Van Horn graduated from Jersey City High School in 1918 and from Columbia University's Teachers College in 1922.

She worked at the Jersey City YWCA until 1928 and then taught physical education at Camden High School until 1938. For the next four years, she was a student and physical-therapy practitioner at St. Louis University, where she earned her master's degree in 1942.

After spending a year teaching Philadelphia nurses how to treat infantile paralysis patients, Miss Van Horn became Norristown area director for the National Foundation for Infantile Paralysis. Among her responsibilities was to organize the annual March of Dimes campaign in Montgomery County and the inoculation of Montgomery County children with the Salk vaccine.

When she retired in 1960, she became a Red Cross volunteer.

She was a direct descendant of George Soule, who came to America on the Mayflower in 1620, her family said. She was a former member of the Mayflower Society.

An ardent traveler, Miss Van Horn went abroad each summer from 1960 to 1973. After living in Norristown for many years, she moved to Rydal Park in 1974. She had been a member and president of the Norristown Soroptomists Club and a member and a past president of the Norristown YWCA.

At Rydal Park, she had been an avid gardener and volunteer and past president of the residents' association. In 1977, she received Rydal Park's Elder Adult Award.

Miss Van Horn was a member of Grace Presbyterian Church in Jenkintown and a former member of First Presbyterian Church of Norristown and Messiah Episcopal Church in Gwynedd.

She is survived by a cousin, Helen Van Horn Sinkway.

A funeral will be held at 3 p.m. today at the Baron Rowland Funeral Home, 1059 Old York Rd., Abington. Friends may call after 2:30 p.m. Burial will be at the convenience of the family.

Herb Drill's e-mail address is [hdrill@phillynews.com](mailto:hdrill@phillynews.com)





Miscellaneous

This is a rough read on end like this, but it was the only way to get it in here in its entirety.

# Homemaker stays in touch with history

*She enjoys baking muffins for potluck suppers at her church or for her son.*

BY MARLEN LIVEZEY  
Correspondent

ARDSLEY — A Mayflower descendant and a Daughter of the American Revolution, Pauline Hornberger maintains an interest in history and the simple pleasures of an earlier tradition.

Like her ancestors, she cooks simple meals and bakes, using fresh, natural ingredients.

She used to play the piano and sew.

## Neighbor's Kitchen

Gesturing to the walls of her kitchen, Hornberger said she did the paneling and wallpapering herself.

She fashioned the shelves she used for storage, and once she even upholstered furniture.

"When something needs to be done," she said, shrugging modestly, "you just go ahead and do it."

Hornberger admitted she is no longer as active, but she still takes walks and patters around the house. She said she still enjoys traveling to historic sites, but mostly, now, she loves to read — 80 books last year — and she keeps a file on what she reads, especially non-fiction and historical novels about women who excelled in some way. She also keeps a daily journal of her activities.

Baking muffins for potluck suppers at her church, Zion Lutheran (an historic church in Flourtown), or for her son, William "Jim" Hornberger, she freezes what she prepares and defrosts as needed.

Hornberger said pumpkins are difficult to

## Pumpkin Muffins

- 1 1/2 cups flour
- Salt to taste
- 1/2 teaspoon cinnamon
- 1/2 teaspoon ginger
- 1/2 teaspoon nutmeg
- 1/2 teaspoon cloves
- 1/2 teaspoon baking soda
- 1 teaspoon baking powder
- 1 egg
- 1 cup sugar
- 1/4 cup oil
- 1 cup pumpkin

Peel and cut up the pumpkin. Put it in a steamer. Cook slowly over boiling water until the pumpkin is soft (about 30 minutes). Put the soft pumpkin through a food mill (or a food processor).

Set aside 1 cup of the pumpkin. Freeze the remaining pumpkin in 1-cup containers for later use.

Sift together the dry ingredients in a small bowl. Mix together the egg, oil and pumpkin in a large bowl. Add the dry mixture and stir until well combined.

Grease or line muffin tins. Fill each half full with the batter. Bake at 375 degrees for 20 minutes.

Makes 12 muffins.

Hornberger said she substitutes butternut squash when pumpkin is not in season.

peel, so cooks should be especially careful not to cut themselves.

She suggested readers follow her lead and dry the pumpkinseeds for squirrel food. She said to freeze the muffins you do not need for later use.

Hornberger traces her family history to George Soule, who came to America on the Mayflower.

She knew little about his history except he probably was not a Pilgrim but rather a servant.

Hornberger traces her family line back to Soule's daughter, Susanna.



Staff photo by Scott Roman

Pauline Hornberger serves Pumpkin Muffins to her son, William "Jim" Hornberger.

## Cranberry-Orange Muffins

- 2 cups flour
- 3/4 cup sugar
- 2 teaspoons baking powder
- 1/2 teaspoon salt
- 1 egg, slightly beaten
- 1 teaspoon grated orange peel
- 2/3 cup orange juice
- 1/4 cup Mazola corn oil
- 1 cup coarsely chopped cranberries

Wash cranberries. Grind them in a blender (or

food processor), a bit at a time. Do not cook them. Divide them into two portions and freeze one for later use.

Sift together flour, baking powder and salt. Mix together the sugar, oil, egg, orange juice, orange peel and cranberries. Blend the dry ingredients into the wet ingredients. Put the batter into greased or lined muffin pans. Bake at 375 degrees for 20 minutes.

Makes 12 muffins.

THE RECORD Doylestown, PA Montgomery County Edition of The Intelligencer Wednesday March 29, 2000

The items on the next four pages were kindly provided by Jennie Soule.

Mr. & Mrs. Thomas Fry Soule, Jr.

1230 Postgrove Drive, St. Louis, MO 63146-4536

(314) 878-2947 E-Mail: [JeSoule@AOL.com](mailto:JeSoule@AOL.com)

May 18, 2000

Mr. Chuck Healy  
810 Mariner's Point Drive  
Creve Coeur, MO 63141

RE: NEWSLETTER ARTICLE

Dear Chuck,

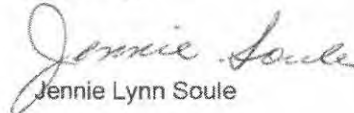
I was talking to Jack Sowles last week and told him all the good new about the "treasures" that I found in Griswold, CT thanks to some wonderful people. Jack suggested that I "write" an article to be published in the Newsletter thanking them for there work and also encouraging others in search of "missing records" to try searching in some unusual places.....

I have send you this "article" and hope that you find it newsworthy.

After the newsletter is published, I would like to send a complementary copy to Mrs. Deveau the historian in Griswold as she too has a tie into the Soule Lineage.

We talked a few weeks ago about "old family" pictures that I have, please let me know when you want to stop at my house and view them.

Sincerely,

  
Jennie Lynn Soule

## Treasures Found in Griswold, CT

In appreciation for their assistance with our family research,  
I would like to thank these wonderful people of Griswold, CT.

Mary Rose Deveau, Historian for the Town of Griswold  
Frances Coughlin, Librarian at the Slater Library  
Ellen Dupont, the Griswold Town Clerk

It is so exciting to find records of your ancestors! Not just the birth, death, and marriage records, but articles written and pictures that allow you to get to know your ancestors.

During our research of Dr. William Soule we acquired his death record from the Town Clerk of Griswold, CT along with a note stating that Dr. Soule was a prominent resident of the town and other family members were also in the Griswold records. We were able to obtain the birth and death records of his wife and children.

I contacted the Soule Kindred Historian, Charles (Jack) Sowles. In the Soule Archives he found references to other family members of Dr. William Soule, and an article about his life that mentioned a Eulogy written in pamphlet form by his cousin, Rev. Sherrod Soule. Of course, we wanted to find the Eulogy.

In searching the "web" for the Town of Griswold, I found that the Slater Library was a source of research for the town. I wrote inquiring about Dr. Soule asking for any information on his burial location and this eulogy. The response we received from Mrs. Coughlin was that he was buried in the Lower Jewett City Cemetery and that there is a street named "Soule Street". She also contacted the Town Historian who had the obituary and also some books that were owned by Dr. Soule and his daughter Mary Elizabeth, a long time school teacher in Jewett City; if we were interested, they would send me the books.

Needless to say, our next step was to contact Mrs. Rose Mary Deveau the Town Historian. No only did she have the books, but also the original Eulogy, pictures and articles written about Dr. Soule and his daughter Mary Elizabeth. It just so happens that Mrs. Deveau's Great Aunt, Alice Brown, taught school with Mary Elizabeth and had a picture taken of the teachers. Both Frances Coughlin and Mary Rose Deveau have been eager to research the town records and find so many wonderful "memories" of our family, including taking pictures of the tombstones, Dr. Soule's home which still stands on Soule Street, and answering all my questions about the town and our ancestors.

Don't give up when looking for records on your ancestors. You never know who may have some old "treasures" in their collections just waiting for someone to share them with.

*My husband, Thomas Fry Soule, Jr is the Great-Great Grandson of Dr. William Soule.  
If you know of a family connection please contact us we would love to share our research.  
Tom and Jennie Soule: 1230 Postgrove Dr., St Louis, MO 63146 [JLSoule@AOL.com](mailto:JLSoule@AOL.com)*

**Family Portraits of Thomas Fry Soule, Jr.**  
Descendant of George Soule, The Pilgrim



Dr. William Soule  
1827 – 1900  
Chaplin & Griswold, CT



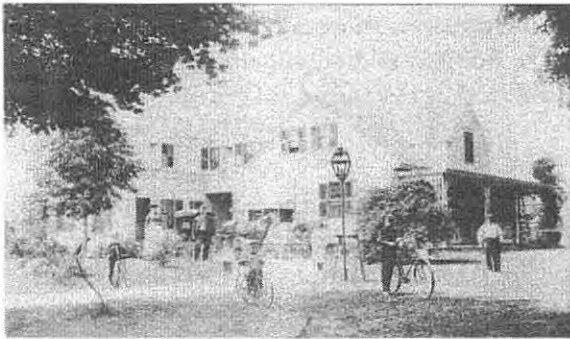
Dr. George C. Soule  
1853 – 1914  
Hampton & Wickford, RI



George C. Soule, Jr.  
1880 – 1924  
Wickford & E. Greenwich, RI



Eleanor E. Fry Soule  
1878 – 1904  
E. Greenwich & Warwick RI



**Home of Dr. George Canning Soule**  
Wickford, Rhode Island – Abt 1894

Dr. George Canning Soule, Anne Celia Nelson,  
Daniel Anthony Soule, Edward Ivory Soule  
Henry Eli Soule, Edith May Soule,  
Ralph Nelson Soule, George Canning Soule, Jr.



Thomas Fry Soule  
1906 – 1999  
E. Greenwich & Warwick, RI



Doris May Gill Soule  
1909 – 1987  
N. Andover, MA & Warwick, RI



Thomas Fry Soule, Jr  
& Eleanor Gill Soule  
Warwick, RI



Thomas Fry Soule, Jr  
1941  
Warwick, RI



Jennie Lynn Soule  
1947  
New Orleans, LA

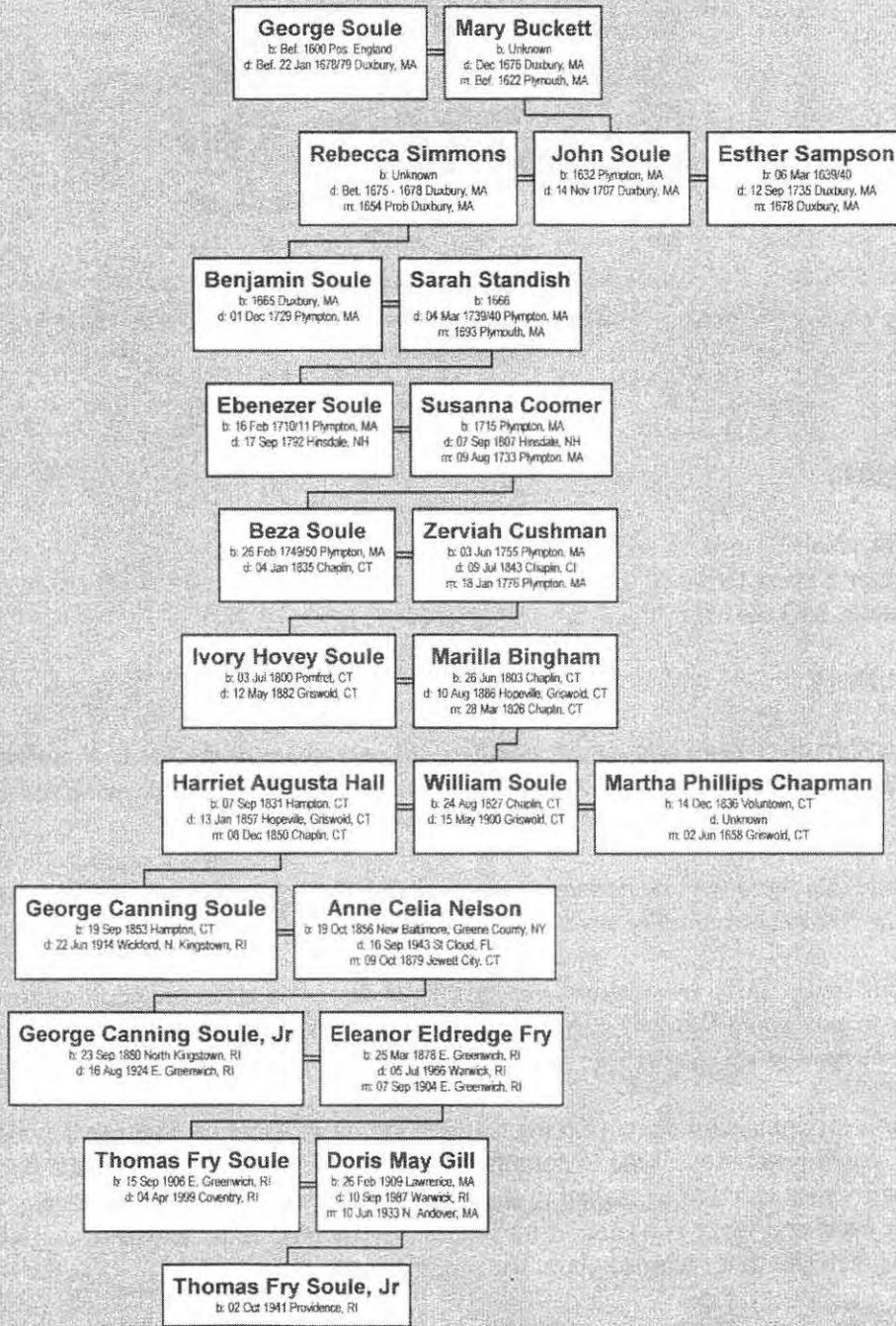


Robert Allan Soule  
1964  
New Orleans, LA



Rebecca Lynn Soule  
1975  
New Orleans, LA

Descendants of George Soule, The Mayflower Pilgrim



March 30, 2000



*11841 Stonehaven Drive  
Perrysburg, Ohio 43551  
(419) 872-0124*

May 20, 2000

Mr. Chuck Healy  
810 Mariner's Point Drive  
Creve Coeur, MO 63141

Dear Mr. Healy,

Has there been discussion relevant to including all past issues of the *Soule Newsletter* on the web page? There are issues I would like to browse through, but I do not have access to them. I do not particularly want to purchase them either.

I appreciate that there may be privacy issues at stake, but it certainly would be convenient to have the information readily available to anyone working through their genealogy.

In previous issues of the newsletter there have been discussions about encouraging new members to join Soule Kindred in America. I realize that having these past issues available at no cost via our website may run contrary to building the membership base.

Has there been discussion about printing Soule Kindred in America post cards which members could purchase to send to potential members? If we could purchase a packet of ten or twenty post cards to be mailed to those Soules we come across in the local telephone book and while traveling, it may boost our membership. It was through Caleb Johnson's web site that I learned about the organization.

Regarding the enclosed tidbits, use them if you choose, I would not feel offended if they do not meet your criteria for publication.

Sincerely,

A handwritten signature in cursive script, appearing to read 'Anna Bristol'.

Anna Bristol  
A Soule Sister

SOULE STORIES

Anna Bristol  
Perrysburg, OH  
May 17, 2000

In my readings I have come across references to various Soules. Perhaps others will find these tidbits interesting as they may relate to a family member.

In 1851 **J. L. B. Soule** wrote an editorial in the *Terre Haute (Indiana) Express* entitled, "Go West, Young Man, Go West." Fourteen years later, Horace Greeley reprinted the editorial in the *New York Tribune* with the addition – "and grow up with the country." Greeley's enthusiasm for the West was doubtless stimulated by his "luck" in finding gold in a "salted mine" in Gregory Gulch.

.....

"The Old West by Time-Life: The Chroniclers," pp. 230-31: "At a camp in Kansas, an Arapaho family holds still for photographer **William Soule**. Many of his pictures of Indians were acquired by the Bureau of American Ethnology, organized by Congress in 1879 to study the Western tribes. By the turn of the century, the bureau's archives at the Smithsonian Institution held about 15,000 negatives." There is a two-page black and white photograph of a family of five in front of their teepee.

.....

"The Old West by Time-Life: The Townsman," pp. 147-150, the discussion centers around townsmen who became shotgun politicians, fighting small wars to capture the honor of having their town named county-seat, a lucrative business practice.

"Perhaps the most bizarre of these conflicts was staged in Gray County, Kansas. The struggle embroiled three small towns – Ingalls, Montezuma and Cimarron; it started in 1887, reached a violent climax in 1889 and dragged on for seven years before it was settled. The instigator was a Rochester, New York, millionaire named **A. T. Soule**, who gave the world a patent medicine cure-all known as Hop Bitters. Soule, annoyed by stiffening competition in the East, had decided to go west and invent a county seat as a financial plaything." The full story is an interesting look at the growing west of the late 19<sup>th</sup> century.

.....

In Diane VanSkiver Gagel's, "Ohio Photographers, 1839-1900," there is an entry reading only, "**Charles Soule**, Portsmouth [Ohio], 1888-1889." The information she includes was derived from city and state business directories, the date indicating the years he was in business in that city.

.....

**George Soule** wrote, "Sidney Hillman: Labor Statesman", New York, 1939, a biography about labor movement unions.

.....

**A.M. Soule**, *Ohio State Journal*, page 92, June 20, 1835, "Controversy Over the Ohio-Michigan Boundary."

.....

"The United States, 1830-1850" by Frederick Jackson Turner, "...an even more striking contribution to the varied population of New Orleans was the stormy petrel, **Pierre Soule**, a native of France. Because of a conspiracy against the Bourbons, he was compelled to flee. A shepherd in the Pyrenees, a refugee in Haiti, a wanderer to Baltimore and to Tennessee, a gardener in Kentucky, he became a brilliant jury lawyer in New Orleans and in 1847, a Senator of the United States. His hot-headed ultimatum to Spain in 1854, while he was serving as President Pierce's minister to that nation, was disavowed; but his determination to secure Cuba for the United States brought him notoriety, again, in the Ostend Manifesto."

.....

**Charles Soule, Sr.**, "...among the numerous portrait painters, a native of Maine, who came to Ohio as a child and became a well-known artist in Dayton," History of the State of Ohio, vol. III, *Passing the Frontier*, Francis P. Weisenberger, 1941.

.....

In "Witnessing America," compiled and edited by Noel Rae, there is a photograph credited to **John P. Soule**. The photo is of a Mormon, his mother, his five wives and new baby, dated 1885.

.....

Singing along with the radio one day caused me to laugh (and other people ask me to not sing at all!) as I heard myself crooning with Elvis. "Well, bless my soul what's a-wrong with me..." You know the rest of the song; but I began dredging up phrases we toss around which include the word "soul." Pulling out a reference book, I found this listing for "soule."

John Lydgate (1370? - 1451?), from *Falls of Princes*, "Sithe he off Inglissh in makyng was the beste, Preie onto God to yive his soule good reste.

With apologies to many Soules, I offer these word plays.

- ❖ "Now I lay me down to sleep, I pray the Lord my Soule to keep."
- ❖ Have you a Soulemate?
- ❖ Let your voices ring out and sing. "*O Soul-e Mio!*" or "*Heart and Soule*" or perhaps this holiday song, "Jolly Old St. Nicholas, now you dear old man, don't you tell a single Soule, what I'm going to say!"
- ❖ Expressions of disbelief hear us intoning, "Upon my Soule!" or "Bless my Soule!"
- ❖ Are you among the Lost Soules, a Soule Survivor, or possibly a Forgotten Soule?
- ❖ Soule Searching - A Good Soule
- ❖ Soule Train - Soule Sis - Soule Brother
- ❖ Letters mingle Soules.
- ❖ The eyes are the windows to the Soule.
- ❖ We Soule descendants wear shoes with leather uppers and rubber Soules. Do they ease the Soules of your feet?
- ❖ She is a hearty Soule, yet the Soule of discretion.
- ❖ We are Souled Out of Soule food - Food for the Soule!
- ❖ He Souled his Soule to the devil.
- ❖ "Old King Cole was a merry old Soule, and a merry old Soule was he..."
- ❖ Laughter is medicine to the Soule.

-Your Soule Sister, Anna Bristol



Anna Bristol  
Perrysburg, OH  
May 17, 2000

My sister, Jeanine M. Gentry, sent this to me. Often I ask if there is a story about a particular person which would "flesh out" that person's character. It is the fulfilling of the "dash" that I seek, not just the dates of birth, marriage, and death.

HOW DO YOU LIVE YOUR DASH? (Author Unknown)

I read of a man who stood to speak  
At the funeral of a friend,  
He referred to the dates on her tombstone  
From the beginning...to the end.  
He noted that first came her date of birth  
And spoke the following date with tears,  
But he said what mattered most of all  
Was the dash between those years. (1900-1970)

For that dash represents all the time  
That she spent alive on earth...  
And now only those who loved her  
Know what that little line is worth.  
For it matters not, how much we own;  
The cars...the house...the cash,  
What matters is how we live and love  
And how we spend our dash.

So think about this long and hard...  
Are there things you'd like to change?  
For you never know how much time is left,  
That can still be rearranged.  
If we could just slow down enough  
To consider what's true and real,  
And always try to understand  
The way other people feel.

And be less quick to anger,  
And show appreciation more  
And love the people in our lives  
Like we've never loved before.

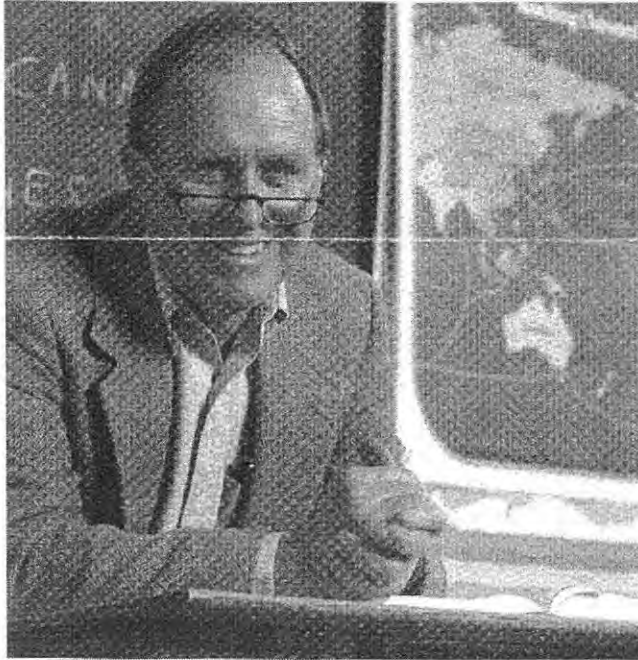
If we treat each other with respect,  
And more often wear a smile...  
Remembering that this special dash  
Might only last a little while.

So, when your eulogy's being read  
With your life's actions to rehash...  
Would you be proud of the things they say  
About how you spent your dash?

The following was received from Rev. Donald S. Mathison:

Thought  
this might  
be of interest  
to you.

BEN SOULE '66:  
A PARTNER IN  
PLANNED GIVING



*"I feel very close to Bowdoin,  
and I'm impressed with the way the  
College has been run..."*

Why teach? "I like schools and learning and just being around high school kids," explains Ben Soule '66, a salt-of-the-earth Mainer and teacher-of-the-world traveler.

After graduating from Bowdoin, Ben's quest for new experiences took him to classrooms around the world: a two-year Peace Corps stint at a Catholic girls school in Cameroon, three years at a predominantly black school in Beaufort, South Carolina, and four years at a Catholic boys school in Melbourne, Australia. In between teaching assignments, Ben served two years in the Army and earned a master's degree at Columbia Teachers College.

Ben's love of Maine brought him back to his native state in 1979. He has been teaching history and coaching sports at Yarmouth High School ever since.

Why Bowdoin? "A small college was the right place for me; I would have been buried at a large university. And, at Bowdoin, an ordinary athlete like me could play sports." Ben's fondest college memories include attending history major meetings at Ernst Helmreich's house, playing hockey, enjoying good times at Psi Upsilon and emerging from a two-year "retirement" to become a part of a very successful (14-3) Polar Bear baseball team his senior year. ("I hit fungos and coached third base.")

In 1995, barely in his 50s and still plying his teaching trade, Ben Soule made an extraordinary gesture to Bowdoin: He contributed appreciated securities to fund a growth-oriented life income gift that pays Ben income for life and ultimately will create the Benjamin A. Soule Scholarship Fund, with a preference for students from Yarmouth.

Why give so much to Bowdoin at such a young age? "I feel very close to Bowdoin, and I'm impressed with the way the college has been run, especially under Bob Edwards. I had inherited some stocks, and I was already living comfortably. It just made good sense. And my lifestyle hasn't been affected one iota."

Ben adds a final thought on his gift. "I figured that Bowdoin would make better use of the money than the federal government." Not a bad lesson, Ben. □

**Soule Kindred in America. Inc.**  
**Annual Meeting**  
July 7, 2000

The annual meeting of Soule Kindred in America, Inc. was called to order by President Robert Bishop at 11:30 A.M. in the Soule Park of Ojai, California. There were approximately 50 members present.

There was a short discussion of changes in the by-laws that had been approved in 1999. One point that affects the group this year is that the Board can operate with mail in or e-mail votes when there is not a quorum at the Annual Board Meeting. There was not a quorum this year so Bob will forward an e-mail or note to all the members concerning the election of officers and other items discussed by members present.

The Massachusetts's Corporate Status of Soule Kindred in America, Inc. was reestablished in 1999. The Corporation is a non-profit organization. If any member has need of the Corporate non-tax ID number, contact B.J. Haner. It should be published in the Newsletter on the page with officers and board members in the near future.

The secretary's report of the 1999 annual meeting was distributed. Chris Schlosser moved to waive reading of the Secretary's minutes and moved to accept as published.

The treasurer's report and the membership report were distributed. They will be published in the Newsletter.

Ruth Hulse moved that the treasurer's report be accepted as presented. It was unanimously accepted.

Bob Bishop reported that he had reviewed the Treasurers report, cross checking deposits and checks written and found it to be very well done. He also thanked B.J. for her thirty years as treasurer of Soule Kindred.

The only questions were about the costs of regular memberships and life memberships. Regular memberships are \$15/calendar year. At the time of membership all Newsletters that have been published in that calendar year are sent in a membership package to the new member. Robert Soules has asked that he no longer work on the membership committee. It was suggested in the Board Meeting that perhaps it would be advisable to have regional membership coordinators whose responsibility would be to try to interest people in their area to join Soule Kindred in America, Inc.

The scholarship report was not available at this time because the last date for applying for the scholarships was July 1, 2000. There was not time after that date for the committee to make a decision, since one of them (B.J. Haner) was already on her way to the reunion. However, Judy Hill and Chris Schlosser, former recipients of scholarship awards were introduced to the group. Chris has been an active member of the organization for a number of years and also a past president. This is Judy's first visit to the reunion and she told a little about her education. She has received her Bachelors Degree and Masters Degree and is working on her Doctorate in Civil Engineering at the present.

The Soule Kindred Website address is located on the inside cover of the Newsletter for the convenience of members.

Ruth Hall also has a bulletin board that can be accessed which will furnish information to interested descendants of George Soule.

The reports of the administrative committees were made by Bob Bishop, since the committee chairmen were not at the reunion.

The Reunion Future Planning Committee had looked into the possibility of having the meeting in Toronto, Savannah, or New Orleans. They had very little information on any of the locations. They did say that Toronto would be very expensive for a reunion. The other two locations were not discussed much only that they might be desirable. Bob asked for suggestions from the floor. Mary Soule Kelley suggested that she would be able to host a reunion in Asheville, NC. She mentioned that the Biltmore Estate House, Carl Sandburg home, Thomas Wolfe

Home and a Cherokee Indian settlement were among the interesting sites of the area. This suggestion will be one of the items that the board will finalize in their voting.

The Historian Report mentioned that the use of the Soule Kindred Library materials is adversely affected with the advent of Internet research. Charles Jack Soules requested that he be able to develop a CD ROM disk that would be a database containing the names of Soule Descendants with the surname Soule, spouses of descendants with surname Soule and descendants with names other than Soule. Jim Schlosser had developed these lists and they are on 3-1/2 inch disks. Charles will be moving them all to a CD Rohm disk making searching easier. Charles Jack Also wanted to create a disk with information from the Ridlin book. The July issue of the Newsletter has been held up in order to include information about the reunion. Last year it was noted that the cost of the Newsletter was greater now than when it was published in North Carolina. It is still a little higher but seems to have stabilized. At this time there will be no increase in dues to cover this additional expense. Most of the dues moneys are used for the Newsletter.

A Soule Kindred slide show had been misplaced a number of years ago. It has been found and probably will be available at the next reunion.

Our member, Louise Walsh Throop is principal researcher for a proposed six volume addition to the General Society of Mayflower Descendants' "George Soule of the Mayflower and his Descendants for Four Generations." The new series is intended to add data on the 5<sup>th</sup> and 6<sup>th</sup> generations, of Soule descendants. The first volume is now in proof. In an E-mail Ms. Throop stated that she would welcome any information on the 5<sup>th</sup> and 6<sup>th</sup> generations, especially by E-mail (LWTHROOP@aol.com). She would also appreciate assistance searching in the county level in local records in New York State, and help on the North Carolina-Alabama-etc. Soules. It has been suggested that we might use some of our moneys that were donated specifically for research to aid in this venture if e can be assured that it will be used for the Soule line.

Three directors must be elected at this meeting to replace the three retiring..

The following were nominated:

Carol Godreau Barbara Johnston Carol Soule

Chris Hill moved that nominations be closed. All candidates were unanimously accepted.

Lee Manusa said that she had some albums that members might enjoy.

Bob thanked Maria Elana for a great reunion.

Maria Elana Allstott welcomed the group, mentioned that the park land and golf course had be donated by Zaidee Soule.

Chris Schlosser moved for adjournment. The meeting was adjourned at 12:40 P.M.

Respectfully Submitted

Margaret A Rocke, Secretary

2000 Soule Kindred Reunion Pictures



Bob Bishop, Gerry Schlosser, Courthouse



Bertha, Judy, Chris



Bertha and quilt



Ben, Card, Florence Soule



Ben and Elaine Soule, Children, Grandchildren



BJ and guide David



Getty Gardens



Group at Santa Barbara



Group on trip



Marcy and Mary



Maria Elana et al



Norm, Florence, BJ, Art Granum



Norman, Florence, Carol



Fountain at the mission of Santa Barbara:  
Mary Kelley, Norm Soule, Stanley Soule



"George Soule" by Maria's nephew



"Zadie Soule" enactment



Robert Diaz (husband of Diane Soule Diaz), son Joshua, Robert T. Keldgord, Sr., and Art Granum (husband of Barbara Soule Granum)



Bertha Erickson at the Getty Museum Gardens



Harlan Specht, Bertha Erickson listening to docent at the Getty



Carol Soule, Peg Turner, Margaret Turner, Stanley Soule, lunch at Santa Barbara



Geraldine Schlosser, Chris Schlosser, Carol Soule, Santa Barbara Courthouse tour



Lee Manausa, Florence Soule, Norm Soule



Norm Soule, Roland Maxwell, Florence Soule, Shirley Maxwell, Elizabeth and Eugene Bucholtz, at Santa Barbara Courthouse



Lee Manausa, Peggy Turner



Lee Manausa, Diane Soule Diaz



Peggy and Margaret Turner



Bertha Erickson, Geraldine & Chris Schlosser

**Annual Board Meeting  
Soule Kindred in America, Inc.  
By Informal Action, July 12 – 18, 2000**

There not having been a quorum at the July 8 scheduled Board of Directors meeting of the Soule Kindred in America, Inc., the Board took informal action as provided in Section 9, Article V of our by-laws (consent by two-thirds of the board by mail, fax, or E-mail) as follows:

1. Election of Officers (all reelected, with shift in order of First and Second Vice-presidents): Robert M. Bishop, President; Norman W. Standish, 1st Vice President; Willis F. Soule, 2nd Vice President; Margaret A. Rocke, Secretary; Betty-Jean Haner, Treasurer/Membership Secretary.

2. Reelection of James B. Tiffin as Counselor and Resident Agent.

3. Resolution: The Treasurer is authorized to conduct the banking, investment and scholarship functions of the Corporation, signing such checks and other documents as may be necessary, subject to at least annual review of such records by the Assistant Treasurer or President. In the absence or inability of the Treasurer, checks may be signed by the Assistant Treasurer or President.

4. Resolution: To support a project of the Historian to produce a compact disk containing a searchable database of the present Kindred index of Soule surnames with a supplement of such data submitted recently. Not to support a proposal of the Historian to produce a compact disk reproducing data in the Ridlon genealogy of Soule descendants.

5. Resolution: That the invitation of Mary Soule Kelly to hold the 2001 annual reunion at Asheville, NC be accepted.

6. Resolution: Congratulations and Thanks to Maria Elana Allstott, Hostess of the Year 2000 reunion, for an exceptionally fine program culminating at the Soule Park in Ojai, CA.

7. Acceptance and approval: of the Secretary's Report of the Annual Board Meeting of August 14, 1999, and of the Treasurers Annual Report of July 23, 1999, to June 1, 2000.

Board Members voting affirmatively were Robert Bishop, Carol Godreau, Betty-Jean Haner, Christine Hill, Barbara Johnston, Patricia Johnston, Margaret Rocke, Geraldine Schlosser, Willis Soule, Barbara Wallace. There were no negative votes.

Robert M. Bishop  
President



**SOULE KINDRED IN AMERICA, INC.**

Betty-Jean Haner, Treasurer  
 53 New Shaker Road  
 Albany, NY 12205-3615

**Annual Report**

For Period July 23, 1999 to June 1, 2000

**Balance on Hand July 22, 1999** **\$73,759.38**

**Receipts**

**Operating Receipts**

Dues	5,944.50
Newsletter Sales	55.00
Index/Computer Disk Sales	120.00
Notepaper Sales	120.00
Literature and Postcards	64.05
General Fund	754.50
Interest on Operating Funds	15.76

**Total Receipts for Operations** **6,673.81**

**Scholarship Receipts**

Soule Kindred Annual Scholarship Appeal	95.00
Avis Roberson Haner Memorial Award	350.00
Life Memberships (designated for scholarships)	1,400.00
Patron Memberships (designated for scholarships)	100.00
Scholarship Interest	1,809.33

**Total Receipts for Scholarships** **3,654.33**

**Bequest of Col. John E. Soule**

Interest on Bequest Account	1,149.32
-----------------------------	----------

**Total Bequest Income** **1149.32**

**Total Receipts** **11,477.46**

**Expenditures**

**Operating Expenditures**

Newsletters (3 issues)	3,681.12
Newsletter (copying 47 issues)	130.24
Office Expense (Treasurer, Membership Sec., Scholarship)	539.83
Corporate Annual Fees	15.00
Historian (Postage, Copies, etc.)	199.45
Web Page(6 months)	137.23

**Total Operating Expenditures** **4,702.87**

**Scholarships**

Avis Roberson Haner Memorial Award	350.00
Col. John E. Soule Memorial Scholarship	1,000.00
George Standish Soule Memorial Scholarship	1,000.00

**Total Scholarship Awards** **2,250.00**

**Total Expenditures** **6,952.87**

**BALANCE ON HAND JUNE 1, 2000** **\$78,283.97**

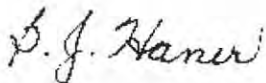
**Soule Kindred in America, Inc.**

**Bank Account Balances**  
As of June 1, 2000

<b>Operating Accounts</b>		
242702162742 Savings Account	621.75	
30522106 Checking Account	3,331.37	
<b>Total for Operating Accounts</b>		<b>3,953.12</b>
<b>Scholarship Accounts</b>		
CD 3070997 5 Generations #1	10,000.00	
CD 3031604 5 Generations #2	8,068.63	
CD 3031622 Life Membership #1	19,903.63	
CD 3031539 Life Membership #2	4,591.19	
CD 3031590 Life Membership #3	1,485.62	
CD 242702992873 Scholarship Savings	5,603.02	
<b>Total for Scholarship Accounts</b>		<b>49,652.09</b>
<b>Request Reserve for Publications and Research</b>		
CD 3031540 Bequest of Col. John E. Soule (Estate Acct.)	24,678.76	
<b>Total for Bequests Accounts</b>		<b>24,678.76</b>
<b>TOTAL OF ALL BANK ACCOUNTS</b>		<b>\$78,283.97</b>

All bank accounts are held in the Trustco Bank in Schenectady New York

Respectfully Submitted,



Betty-Jean Haner

**SOULE KINDRED IN AMERICA, INC.**

Betty-Jean Haner, Treasurer  
and Membership Secretary  
53 New Shaker Road  
Albany, New York 12205-3615

***Membership Secretary's Report July 2000***

343 Regular Members  
97 Life Members  
31 Libraries and Family Soc.  
471 Total Membership

32 New Members  
51 1999 didn't renew  
22 Net loss of regular & life members

***Of 51 members who did not renew***

15 were new in 1999  
4 were new in 1998  
10 were new in 1997  
6 were new in 1996  
2 were new in 1995  
3 were new in 1994  
7 were from 1986-1993  
4 were long term members from 1985 and before

***Some statistics on renewal patterns over the years:***

26 members did not renew in 1996  
49 members did not renew in 1997  
58 members did not renew in 1998  
40 members did not renew in 1999  
51 members did not renew in 2000

I have answered 156 letters since the last reunion.

Respectfully submitted,

*B. J. Haner*

Betty-Jean Haner  
Membership Secretary



## Share your genealogy with the Kindred

The following four pages are an example (next two pages) and a blank form (the two pages after that) that you may wish to use to send to the Soule Kindred information on yourself and your ancestry. Please send to historian Charles J. Sowles, PO Box 329, St. Francisville, IL 62460.

Soule Kindred	
	11th Generation      POTTEKHEN Family
Soule Descendant	TATIANA JEAN POTTEKHEN
Ancestral Line	(Tatiana Jean Potekhen <sup>11</sup> , Nancy Edna Sowle <sup>10</sup> , Claude <sup>9</sup> , Harvey <sup>8</sup> , Hiram <sup>7</sup> , Wesson <sup>6</sup> , James <sup>5</sup> , Wesson <sup>4</sup> , Nathaniel Soule <sup>3</sup> , Nathaniel <sup>2</sup> , George <sup>1</sup> )
Parentage	son/dau of George Paul and Nancy Edna (Sowle) Potekhen
Birth or baptism	was b 10 June 1949 at Plainfield, Union Co., NJ
Death	died living 1986 at
Burial	buried at Cemetery
Residences and removals	Resided Plainfield, NJ, Cincinnati, OH, Corning, NY, Silverthorne, CO
Occupation	Travel Agent
Military service	
Other biographical data	Graduate Ohio University, Athens, OH 1971; Moved to Colorado to do post-graduate work at Colorado State University in Fort Collins; moved to Silverthorne, CO 1975. Tania & Ron owned a restaurant-bakery in Dillon, CO, contractin business in Silverthorne, and after spending three months in Mexico with their family in 1985, they opened a travel agency - "Teke Tours"
	He/She married RONALD LOUIS TEKE
	on 11 September 1971 at Athens, Athens Co., OH
Parentage	son/dau of Ralph Harold and Mary Elizabeth (Rodenburg) Teke
Birth or Baptism	He/She was b 6 March 1950 at Cincinnati, Hamilton Co., OH
Death	and died living 1986 at
Burial	buried at Cemetery
Biographical	Occupation: Building contractor; travel agent & guide See above
Other marriages	No other marriages for either of the above

(OVER)

Names in full, date and place of birth, marriage, death, and to whom married

Children of Ronald Louis and Tatiana Jean (Potekhen) Teke

(1) Jennifer Elizabeth b. 28 October 1978 Denver, CO

(2) Christopher Louis b. 1 Feb 1980 Denver, CO

This record was compiled by Geraldine Sowle Schlosser

of Route 3, Box 53, Tomah, WI 54660 Date 2 July 1986

Sources of data Marriage, birth announcements; interview (phone) with Tania (Tatiana) Potekhen Teke, Silverthorne, CO, 2 July 1986

Verified by \_\_\_\_\_

SOULE KINDRED

Soule Kindred	
	Generation _____ Family _____
Soule Descendant	_____
Ancestral Line	( _____ ) _____
Parentage	son/dau of _____ and _____ ( _____ ) _____
Birth or baptism	was b _____ at _____
Death	died _____ at _____
Burial	buried at _____ Cemetery
Residences and removals	Resided _____ _____ _____
Occupation	_____ _____
Military service	_____ _____
Other biographical data	_____ _____ _____ _____ _____ _____
	He/She married _____
	on _____ at _____
Parentage	son/dau of _____ and _____ ( _____ ) _____
Birth or Baptism	He/She was b _____ at _____
Death	and died _____ at _____
Burial	buried at _____ Cemetery
Biographical	_____ _____ _____
Other marriages	_____ _____ _____

(OVER)



## E-MAIL ADDRESSES

NAME	E-MAIL ADDRESS	OTHER INFORMATION
Allstott, Maria Elana Soule	allstot@gte.net	2000 reunion host
Bishop, Robert	RmBishop@aol.com	<i>Soule Kindred</i> President
Buchholz, Eugene	buchholz@powerweb.net	
Campbell, Clay D.	WYNTER1213@aol.com	Haskell, Pain, Farrow lines
Castro, Patricia	kearneysearch@worldnet.att.net	
Clark, Ann and/or Tom Watkins	acmeannie@redshift.com	
Colwell, William N.	Mec10wnc@aol.com	
Cook, Elizabeth	Cookkin@aol.com	
Croteau, Beatrice	hankc@valstar.net	
Detling, Douglas G.	ddetling@greencity.org	
Gaudlitz, Lauren	lrg_larson@hotmail.com	
Gipson, Mrs. Donald E. (Jane)	gipson@grrtech.com	
Godreau, Carol	cgodreau@neuron.uchc.edu	
Hall, Mary Susan	glasshall@aol.com	Jenkins & Dunham surname links to Soule
Hall, Ruth E.	ruthhall@worldnet.att.net	Webmaster
Hannon, Ruth	rflare@att.net	researching gr-grandmother Eliza Soule
Healy, Chuck	cehealy@aol.com	<i>Soule Kindred</i> newsletter editor
Herring, Joann Rhome	quiltertu@aol.com	
Hill, Christine	jhill1@kscable.com	[note: jhill(one)]
Johnston, Barb	fussfoot@aol.com	
Johnston, Pat	Patticak25@aol.com	
Keldgord, Robert "Bob" E.	SacChief@aol.com	Soules from Kalamazoo and Calhoun Counties, MI
Kenyon, Russel W.	rkenyon@prodigy.net	Kenyon, Burdick, Babcock, Crandall, Canfield, Livermore, Soule research
Kreger, Lewis	Lkreger60@aol.com	William "The Loyalist" Soule research
Kruse, Brian L.	ekruse@internetni.com	
Lowman, Carolyn Soule	lowman@greencafe.com	
Maddux, C. J.	cmaddox@sitevision.com	Mayflower web site
MacDonald, R. Andrew	andymac1@concentric.net	
Nielsen, Eloise	hnielsen@hrn.bradley.edu	
Parrott, Mike	MLParr514@aol.com	
Richardson, Mrs. Diane L.	drich@arwest.com	
Rocke, Margaret "Peg"	PegRocke@aol.com	<i>Soule Kindred</i> secretary
Schlosser, Christine	cschloss@expec.com	<i>Soule Kindred</i> Past President
Schlosser, Gerry Sowle	gsoelesch@aol.com	
Sheldon, Robert	bobsheldon@compuserve.com	Sole research, <i>The Sole Society</i> - United Kingdom
Shepherdson, Nancy	sjnanner@compuserve.com	
Soule, Frank Flint	ffsoule@uop.com	
Soule, Gary M.	garysoule@prioritymanagement.com	
Soule, Sharon G.	dsoule@coffey.com	
Soule, Thomas Fry, Jr.	JeSoule@aol.com	
Soules, Bob	soulesbob@aol.com	
Soules, Harry F., Jr.	hfsoules@hotmail.com	
Soules, Les	lessoules@juno.com	
Standish, Norman	standish@aeronic.net	
Turner, Paula J.	wht@netsightsinc.com	



Verdoorn, Joan	verdoorn@inreach.com	http://home.inreach.com/verdoorn
Vessely, Pat	vessely@hevanet.com	
Wagenknecht, Walter Chappell	wagenwal@aol.com	
Wallace, Bob & Barbara	babspenwow@aol.com	
Yaezenko, Suzette	suzette@moscow.com	

## E-Mail Messages

**Subj:** Re: Ruth E. So(u)wle b. Oct 21, 1804 - d. Nov 23, 1857...  
**Date:** 4/2/00  
**From:** ruthhall@worldnet.att.net

Found in the Ridlon book.

I. Robert Sowle (1), probably the eldest son of Joseph (1) and Charity (Tripp) Sowle, born in Tiverton, R. I., Nov. 3, 1767; married Jan. 1, 1793, MERIBAH DURFEE, born Oct. 24, 1768 and died May 23, 1817. He was married a second time to BETSEY (???), and third, to CYNTHIA CAPRON. Robert was a farmer near Broadalbin, N. Y., where he died Feb. 2, 1848. He was a man of excellent reputation and useful as a citizen and neighbor. Children's names follow.

I. GARDINER SOULE, eldest son of Robert and Meribah, born Sept. 30, 1793, and went with his parents to Broadalbin, N. Y., but relatives of the family do not agree concerning his fate. Some assume that he died young and single while others believe he went to Michigan and had a family. The author gives him a family.

II. ANNA SOULE, daughter of Robert and Meribah, born Mar. 1, 1795, was married to CHAUNCEY FOX by whom she had issue. See record.

III. CHARITY SOULE, daughter of Robert and Meribah, born Oct. 17, 1796.

IV. DURFEE SOULE, son of Robert and Meribah, born Dec. 17, 1798.

V. JUDITH SOULE, third daughter of Robert and Meribah, was born Dec. 16, 1800. Never married.

VI. RILEY SOULE, third son of Robert and Meribah, born Nov. 22, 1802.

VII. RUTH SOULE, daughter of Robert and Meribah, born Oct. 27, 1804; married March 7, 1827 to (???) PORTER and died Nov. 25, 1857.

VIII. GIDEON SOULE (1), fourth son of Robert and Meribah, born Oct. 15, 1806, in Broadalbin, N. Y., made his residence in the village, where he carried on his farm and was employed as a carpenter. He was a man of strict integrity and exemplary conduct; an active member of the M. E. Church and an ardent Democrat in politics. He and his wife were buried in the Broadalbin cemetery and their headstones inscribed there bear the following: "Gideon Soule who was born Oct. 15, 1806; died Sept. 13, 1870. He was married Jan. 1, 1830 to SALLY BROWER, who was born Feb. 29, 1812 and died Nov. 21, 1878." After her husband's death, Sally Soule was married to JEDEDIAH ROBERTS, a farmer of Mayfield, Fulton County, N. Y., and was living near that place when she was taken ill and died.

IX. PHEBE SOULE, daughter of Robert and Meribah, born Nov. 2, 1809.

X. GEORGE SOULE, son of Robert and Meribah, born March 5, 1812.

XI. ELIAS SOULE, sixth son of Robert and Meribah, born Oct. 9, 1821.

\*\*\*\*\*

**Subj:** Grand mother of Mary Hagaman, wife of Howland SOULE

**Date:** 4/18/00 4:13:50 PM Central Daylight Time  
**From:** Wizzzaerd@aol.com

So that would make this woman the grand mother-in-law of Howland SOULE of Albany, NY. The United Empire Loyalist who received a crown grant in 1810 in Saltfleet, Upper Canada...know Wentworth County, Ontario. He died in 1817 chopping down a tree. Mary remarried Thomas L. Candon. Loyalist records list Mary's parents as Abraham HAGAMAN and Rachel SPRINGSTEAD.

Claudia Day  
 Grand Rapids

\*\*\*\*\*

**Subj:** Sarah Silvermail JONES m William HAGAMAN  
**Date:** 4/18/00  
**From:** Wizzzaerd@aol.com

Sarah Silvermail JONES m William HAGAMAN (from <Beth\_Sumpter@emory.org>)

Abraham HAGAMAN m Rachel SPRINGSTEAD (Greenville Cemetery--moved from Hagaman Farm Burying Groud in So. Westerly, NY..per Beth)

Mary Hagaman\* m Howland SOULE\*  
 Jeremiah SOULES\* m Betsey Elizabeth GREEN\*  
 ELizabeth SOULES\* m George ALTHOUSE\*  
 Anna Catherine ALTHOUSE\* m James Wesley TAYLOR\*  
 George Harold Taylor \* m Grace Mildred REYNOLDS

\*Referred to in Building Our Pedigree by Ida Florence Wright Crozier and Mary Victoria Glover Sanderson ISBN -0-9690727-1-6 pages 93 and 94.

Hamilton (Ontario) Public Library has the papers on which the book was based.

If there are any kind Soules close by that library, I am in Michigan and would appreciate any data connecting Elizabeth SOULE and her parents and Jeremiah and his parents. The papers were donated by Barbara Green. They might be under her name. Probably the librarians there are familiar with the work. The chapter is entitled "The Descendants of Levi and Christian Cook Green".

Claudia Day  
Grand Rapids, Michigan

\*\*\*\*\*

**Subj:** RE: William Soule/Sowle - Disproven  
Mayflower Line?  
**Date:** 4/27/00  
**From:** ren@delanoye.org

According to DFIP:58-60,

"William, son of Ezekiel and Hannah DELANO (marriage recorded DUXBURY VR pp. 243, 311), was born Duxbury 4 Sep 1738 (recorded GEORGETOWN ME VR 3:73 [MFIP #99]).

MF 11:2:35 (DOTY) claims that William SOULE died unmarried 5 Jul 1754 (GEORGETOWN VR 3:73). Some undocumented(?) sources claim that he married and had children. MF 3:196 (SOULE) first claimed that he married Anna SEWALL, later corrected in the addendum p. 11 to agree with MF:11, citing the source as DOWNEAST ANCESTRY 2:1:23."

Ren

\*\*\*\*\*

**From:** LMG2464@aol.com]  
**Sent:** April 26, 2000  
**Subject:** William Soule/Sowle - Disproven Mayflower Line?

I'm a new subscriber to the list, and am hoping that someone else out there may be researching the Soule/Sowle family in Northeast (Grand Isle County), Vermont.

I've always been told that our family was descendant of the Mayflower Soule through the William Soule/Sowle (a loyalist) who settled in Alburg, VT following the Revolution. When I recently began looking into this for myself, I was told by a distant relative (with few details) that William's line to the Mayflower was long ago disproven by the Mayflower Society. Strangley though, I found him listed in the "Descendants of George Soule" genealogy that was published by the Society. What's the real story, here??

William was (supposedly) born in 1738, the son of Ezekiel Soule and Hannah Delano, and died in 1811 (Alburg, VT). His wife was Anna Sewall, and they had seven sons.

If Ezekiel and Hannah Soule have been disproven as his parents, is it known who his parents may have actually been? The name "Soule" is hardly common - it seems likely

that William was a descendant of the Mayflower Soule. Were there any other (non-Mayflower) Soule families in New England at this time?

I'd appreciate any help!

Thanks,  
Lisa

\*\*\*\*\*

**Subj:** Hiram Allen SOULE m Harriet E. COLSON  
1846 Danby, VT  
**Date:** 4/27/00  
**From:** Wizzaerd@aol.com

There was a picture of a Soules soon-to-be-Eagle Scout cleaning up a cemetery in Grand Rapids. So I called and talked to his mother and got the great grandfather was Cecil SOULES and found the great great grandfather was Harvey McIntire SOULE (sp:Luella Martha JACKSON). Harvey was born 21 Feb 1846 in Danby, Rutland, VT to Hiram Allen SOULE and Harriet E. COLSON. That's as far as I could reach with the IGI. Does anyone know the parents of Hiram Allen SOULE?

Claudia Day  
Grand Rapids, Michigan

\*\*\*\*\*

**Subj:** WESSON/Nathaniel SOULE connection  
**Date:** 4/27/00  
**From:** Wizzaerd@aol.com

OK I found Hiram Allen SOULE b 20 October 1818 Danby, Rutland, Vermont to Wesson SOULE and Elizabeth CURTIS. Is/are Nathaniel SOULE/Meribah GIFFORD recognized by the Soule Kindred as Wesson Weston Soule's parents...is it the 45 year generation gap that is causing questions? Is there a Westport, Massachusetts and a Westport, Maine?

Claudia Day

\*\*\*\*\*

**Subj:** Ridlon Book  
**Date:** 4/28/00  
**From:** ruthhall@worldnet.att.net

For those of you who would like a copy of the Ridlon Book. I haven't dealt with these people so I don't know if they are reliable or not. They have a lot of other genealogy books also.

SOLE, Solly, Soule, Sowle, Soulis. A Contribution to the Hist. Biog. and Genealogy of the Families. From 18th Century to Present, By Rev. G. T. Ridlon, Pp. 577-1151, 1926, PHOTOCOPY; FLEX. VINYL COVERS, Volume 2 only.\$143.75

or there is a reprint of both volumes

SOULE. Contribution to the history, biogr. & genealogy of the family named Sole, Solly, Soule, Sowle, Soulis, by G.T. Ridlon, Sr. 2 Volumes 1180 pages 1926. \$177.00 This book is a quality reprint with sturdy paper binding. Hardbound is available for an additional \$10. This book is

print-to-order; please allow 8-12 weeks, plus an additional 2 weeks for hardbound.

When you get there just click on keyword search and then type in the name of Soule.

<http://www.glbco.com/>

\*\*\*\*\*

**Subj:** Michigan Eagle Scout wanna-be  
**Date:** 4/28/00  
**From:** Wizzaerd@aol.com

The headline reads:GRAVE RESPONSIBILTITY: Eagle Scout wanna-be cleans up Martin Cemetery GRAND RAPIDS TWP. by Brain Donovan the Grand Rapids Press

To become an Eagle Scout, Joe Soules is working the graveyard shift.

In this case, the graveyard is Martin Cemetery, off Cascade Road SE in Grand Rapids Township. Soules has taken on the job of cleaning up the cemetery, which is one of two owned by the township government.

Soules, 18, is a junior in high school and a scout in Troop No. 290.

This article was in the paper yesterday. I talked with Joe's mother and she said his great grandfather was Cecil SOULE. I went to familysearch.org and found Cecil Carl SOULE. Grandparents were Harvey Mcintire Soule and Luella Martha Jackson (Married in Jackson, Michigan 17 Oct 1869).Harvey Mcintire Soule was born 21 Feb 1846 danby, Rutland, Vermont to Hiram Allen Soule and Harriet E. COLSON. Hiram Allen Soule was born 20 October 1818 Danby, Rutland, Vermont to Wesson Soule and Elizabeth Curtis. Wesson b 11 Sept 1791 <Dorset, Dorset, Vermont> to James and Patience (Macomber) Soule. James was born 25 May 1761 Westport, Bristol, Maine to Wesson and Richama (Hicks) SOULE. Wesson married second Sarah WILBER and third Philena MANCHESTER. Wesson also appears as Weston...was born 9 January 1734/1735 Dartmouth, Plymouth or Bristol, Massachusetts (when did the county boundary change?) to Nathaniel and Meribah (Gifford) Soule. Nathaniel was the son of Nathaniel (b 1637 Plymouth, Massachusetts Bay Colony) and Rose(Thorne) Soule. Nathaniel was the son of George and Mary (Bucket/Becket) Soule.

Does Soule Kindred recognize any of this line?

.....The graveyard has been in that location since around 1836, with the oldest legible marker dating from 1852.

\*\*\*\*\*

**Subj:** Soule names please  
**Date:** 5/6/00  
**From:** Micromom56@aol.com

Hello; I am new on this mailing list and I hope someone can help me. I am researching the Soule family on my husbands side and I am having some problems finding some names. I am trying to find the parents to Hazel May Soule married Harold A. Colbert in Colorado. She was born some where in Missouri and she had brothers by name

of Charles....John....and a 1/2 brother named Henry. They lived in Colorado and she had a step mother who was in a nursing home in Fremont County. Does any one have any info. on this family that they are willing to share. I thank you now for your help. May God Bless...Sharol Colbert

\*\*\*\*\*

**Subj:** Missing Soule  
**Date:** 5/19/00  
**From:** WYNTER1213

Dear Soule Kindred in America Member,  
I am trying to find information on the following line, especially from Seth Farrow to Frederick Richards. Please let me know if you have any information on this line.

Thanks for your help.

Clay Campbell  
Charlotte, NC

George Soule  
Patience Soule m. John Haskell  
Susanna Haskell m. Thomas Pain  
Mercy Pain m. Seth Farrow, Sr.  
Seth Farrow, Jr. m. Millicent Andrews  
Sally Andrews m. John Gooding  
Caroline Gooding m. Frederick Richards  
Hannah Richards m. Elijah Jones, Jr.  
Nellie Jones m. Harvey Delos Phelps  
Jennie June Phelps m. Charles Haven Hayes  
Barbara Anne Hayes m. Howard Edsel Campbell  
Howard Douglas Campbell m. Marcia Constance Jones  
Clay Doulgas Campbell (me)

\*\*\*\*\*

**Subj:** Hi Soule Cousins  
**Date:** 7/5/00  
**From:** SharonV45@aol.com

Hello to all,

Hope that your 4th was good to you and that all is well. I just received a message from Shirley Felton about her Soule line and I am passing it on to you so see if others are researching this line. I have invited her to join the group and I hope that she does. I think there is always room for one more Cousin.

**From:** "Shirley" <richardf805@home.com>

I got curious one day and looked up the Soule name on the net. Here is what I have of my records. My Grandmother's mother was Sarah Marie(Soule) Mowers and she was born Dec. 6, 1847. Her parents were John Sanford Soule and Maria P. (Kingsbury) Soule. The family migrated from North Fairfax, Vt in 1863. The family located on a farm about one and one half miles northwest of Ripon, Wis. Grandmother married Leonard Hamilton Mowers of Ripon, Dec. 6, 1870. I would love to hear from you and find out if we are related, which I think we are somehow.

Sincerely,  
Shirley Felton

Sharon Gill Vanden Bossche

\*\*\*\*\*

**Subj:** Re: Threat to Pilgrim Church in Leiden, Holland  
- Update  
**Date:** 7/22/00  
**From:** sbcwjr@lancnews.infi.net (Stacy B. C. Wood,  
Jr.)  
**To:** MAYFLOWER-L@rootsweb.com

The following is quoted from the June 2000 edition of "Keeping You Posted," a publication of the United Church of Christ.

**PILGRIM PETITION GETTING RESULTS** - A petition on the UCC's website to save one of the last remaining Pilgrim church ruins in Holland seems to be paying some dividends. The official most responsible for promoting a shopping center in Leiden, where the ruins are, abruptly resigned. City fathers have now asked Jeremy Bangs, an American historian and curator of the Leiden

Pilgrim Museum, to submit plans more sensitive to historical preservation.

In preparation for the city council's meeting in June, the UCC Office of Communication forwarded thousands of signatures from the petition. That online document received backing from members of conservative groups like the Conservative Congregational Christian Conference and the Southern Baptists to Mormons, Anglicans, Catholics, and Greek Orthodox. The story has also been carried by organizations like the Mayflower Society and Huguenot Heritage.

Still unknown, however, is the position of Ahold, a Dutch-based-multinational food company that is a major developer of the site. Among its American properties is Stop and Shop, a supermarket chain strong in Pilgrim New England and other parts of the United States. Ahold says it is "committed to good citizenship and to making a contribution to society at large."

## Kindred Membership

The following is a list of members of the Soule Kindred in America as of 15 July 2000 as I have it. For reasons of privacy, there is no listing of addresses. If I have your name misspelled, please let me know so I can correct my files. Chuck Healy, Editor.

AAROEN	BETTY L
ABRAHAM	SHIRLEY J
ALBRIGHT	SUZANNE S
ALLSTOTT	MARIA ELANA SOULE'
ANDREASEN	ALTA N
ANTHONY	ESTELLA CICERO
ARATA	ETTA HARRELL
BACHMAN	JOSEPH A
BAKER	WILLIAM SOULE
BAKER, MD	EVERETT B
BARBER	WARREN A
BARNARD	PATTI
BARNES-SCHNEIDER	PEGGY LEE
BEAL	CHARLES LEWIS
BELL	JANET I
BENNETT	ANNE SELENE BISHOP
BERGELAND	DAVID P
BERVER	YVONNE M
BIRD	MARTHA SOULE
BIRTWISTLE	RUSSEL
BIRTWISTLE	JOHN G
BISHOP	GRACE M
BISHOP	ROWAN J S
BISHOP	ANNE S
BISHOP	ROBERT M
BISHOP	ROBERT M. JR
BISHOP	DONALD M
BLANCHARD	ROBERT D
BLANCHARD	WILLIAM B
BLEVINS	ANNE SOULE LAPHAM
BLOOMFIELD	WILLIAM E
BOND	RAYMOND
BOSSERMAN	MARCIA SOULE
BOTHFELD	ROBERT
BOWMAN	ELISABETH LOVELL
BRENDEMUEHL	SHIRLEY
BRISTOL	ANNA LEE
BROWN	WILLIS L
BROWN	LINDA
BROWN	L G
BRUMBAUGH	JANE B
BRYANT	LOVINA M
BUCHE	HELEN M
BUCHHOLZ	EUGENE
BUDD	KATHLEEN WINSLOW
BURNS	ROBIN DUNSMORE
BURT	WARREN E
CALBY	DIANA H
CAMPBELL	CLAYD
CAREY	ELDON W.
CARPER	JANET SOWLES
CLARK	DORIS E
COBB	BARBARA I
CODY	CHARLOTTE
COLWELL	WILLIAM
COOK	ELIZABETH

COOKE	MAUDE E.
CORNISH	DEBORAH E
COX JR	JOE B
CROTEAU	BEATRICE
CROWLEY	WARD R
CROWLEY	ANNE B
DAILY	SETH J
DARK	DWAYNE D
DAVIS	KEN
DAY	CLAUDIA SAUNDERS
DEAN	L ALLYN
DEMARAY	VIOLET SOULE
DENAULT	CHARLES A
DENISON	SHIRLEY THOMAS
DES ROSIERS	BETTY LEWIS
DETLING	DOUGLAS G
DEUEL	WILLIAM G
DICKENSON	CHARLES SAMUEL
DIRLAM	JAMES H
EDWARDS	DOROTHY JEAN SOULES
ENOS	EUGENE
EPPERSON	D ALBERTA SOULE
EPPS	ELIZABETH HARRUB
ERICKSON	CHRIS
ESPOSITO	DEBORAH SOULE
FALLON	VIRGINIA W
FIDLAR	WILLFRED
FIORI	JAMES V
FLETCHER	HILDA CARTER
FOGG	MERRILL O
FOSTER	DONNA L
FOUST	CHLOEY SOWLE
FRAME	JANET SOULES
FRANZE	ELIZABETH C
FREY	ERNEST A
FUND	WANDA M
GAGE	GORDON
GALLENINE	HELEN R
GALLENINE	JON T
GALLENINE	RICHARD W
GAUDLITZ	LAUREN
GAVITT	RICHARD E
GERRITY	ROBERT M
GIFFORD	ALEXANDER G
GILCHRIST	LORRAINE DEUEL
GILL	WINNIFRED S
GILL	ELIZABETH S
GILL	HARRIET E SOULE
GIPSON	JANE B
GODREAU	CAROL
GOEHL	JOHN O
GOODRICH	NATALIE S
GOWER	MARILYN SOULE MCCABE
GRANCHER	ELINOR SOULE
GRANUM	ARTHUR
GRIFFITH	SANDRA K

SOULE KINDRED NEWSLETTER, VOL. XXXIV, NO. 3 AUGUST, 2000

GROHARING	RICHARD B
GUNN	NADINE M
HAFT	ELMA SOWL
HALE	MARY ANN
HALL	BRIDGET
HALL	MARY SUSAN
HALL	RUTH E
HALSTEAD	CHARLOTTE A
HANER	BETTY-JEAN
HANNON	RUTH LINCOLN
HANSEN	CHARLES M
HARPER, JR	NELSON V
HARRIGILL	DOROTHY S
HARRIS	HARRIET DUSTIN
HARRIS	TIMOTHY C
HARRIS	EDWIN S
HARRISON	SUSAN SOULE
HARRISON	CHRISTA
HARRISON	SALLY
HARTMANN	MARTHA B
HEALY	CHARLES E
HELZERMAN	DOROTHY R
HERMANN	RUTH
HILL	RUTH E
HILL	CHRISTINE M
HILL	MARIA A
HIRD	MAX
HOLLAND	HAZEL A
HOLMES	ELIZABETH M
HOPSON	FERNE A
HORNBERGER	PAULINE W
HOUCK	LEIGH SCHUYLER
HUGHES	JUDY
HULSE	DIANNE LYNN
HULSE	PHYLLIS S
HUNT	MATTHEW DOUGLAS
HURDLE	MARY JO
HURDLE	DAN W
IRWIN	ELEANOR SOULE
ISAKSEN	ROBERT D
JACOBS	BETTY JEAN
JARED	PEGGY C
JEROME	DEBORAH
JOHNSON	RUTH M
JOHNSON	EUGENE M
JOHNSTON	BARBRA A
JOHNSTON	PATRICIA ANN
JOHNSTON	ANDREW M
JONES	GEORGE J
JONES	STEVE
JORDAN	VIVIAN HILL
KEEFE	MARY ANN D
KEESLING	MARY A
KEITH	E LEON
KELDGORD	ROBERT E
KELLY	MARCY SOULE
KELLY	MARY SOULE
KENDRICK	PATRICIA SOULE
KENDRICK	KATHERINE J
KENYON	RUSSELL
KENYON	THOMAS
KEOHANE	BARBARA
KIRKPATRICK	JOHN A
KNIGHT	LENDALL B
KNIGHT	RUTH A
KNUDSON	MAYNARD

KOVRT	CHARLES F
KONIK	MARY MULLIGAN
KOSTIK	RUTH MOORE
KREGER	LEWIS
KRUSE	ELIZABETH
LANDRY	M R
LARSON	BARBARA SOULE
LARSON	LARRY
LAWSON	ETHEL J
LELAND	HARRISON C
LEWIS	DOROTHY J
LEWIS	RICHARD L
LOWMAN	CAROLYN SOULE
MAC DONALD	R ANDREW
MAC DONALD	PETER A
MADDOX	RAMON E ED
MAKELY	JOANNE
MANAUSA	LEE
MANAUSA	STEVEN
MARTIN	JAMES EDWARD
MARTIN	DAVID S
MASTROIANNI	CARLENE
MATHISON	DONALD S
MATSON	ROBERT E
MATTSON	PATRICIA F
MAXWELL	SHIRLEY S
MC AFEE	WAYNE A
MC BURNEY	CHRISTIAN M
MC BURNEY	FREDERIC A
MC COMBS	PHILIP NISBET
MC GIMPSEY	SUSAN WEBSTER
MC NELLIS	JOSEPH P
MC SHEA	FREDERICK H
MEIER	NORMA SOLLY
MERCHANT	BRADLEY W
MERRITT	JOHN A
MEYERS	IRENE
MIRELL	HOLLY NICKESON
MOECKEL	MONA C
MORRISON	DOROTHY
MORROW	JOSEPHINE H
MOSTERT	JOHN
MURDOCK	JOHN A
MURRAY JR	GEORGE F
NELSON	ELMER R
NEWGARD	ELISE M
NICHOLAS	SANDRA A SOULE
NICKESON	VIRGINIA H
NIELSEN	ELOISE SOULE
NIEMYER	ELIZABETH SCHUYLER
NORDMEYER	JOHN L
O'CONNELL	MARIAN L
OPALKA	SHIRLEY
OSBORN	EMOGENE
OWEN	MARGARET
PAHLE	CLARICE SOWLE
PALLEY	MARY FLYNN
PARENTEAU	JEROME
PARROTT	MIKE
PATTERSON	HELEN SOULE
PATTERSON	BRUCE D
PATTERSON	DAVID SOWLES
PATTERSON	DWIGHT
PATTERSON	STEVEN ANTHONY
PATTERSON	WAYNE A
PAYNE	SHIRLEY R

SOULE KINDRED NEWSLETTER, VOL. XXXIV, NO. 3 AUGUST, 2000

PAYTON	ANTOINETTE SHIELDS
PEARCE	PHYLLIS M
PEAVEY	ANN G CARMAN
PENNEY	CORA SOULE
PERKINS	KATHARINE T
PETERS	ROSEMARY SOULE'
PETTIT	KAY
PETTY	JENNIFER SCHUYLER
PLOCK	LOWELL B
POLEWACH	MARIAN J SOULE
PORTER	PAULINE A
PORTER	ELWOOD M II
PRICE, MD	CHARLES SOWLE
PUGH	ROBERT L
RASH	PAUL R
REMYNGTON	PAUL
RENSTROM	MARIE
RICH	BETTY JACOBS
RING	LORRAINE WHITE
RINKER	DOROTHY
ROCKE	KENNETH E
ROSS	PRISCILLA A
RUDISILL	CHRISTINE BOLAND
RUSSELL	ELIZABETH
SAARIO	DIANNA L
SAMSON	KARRIR
SANDERS	DORIS L
SAUNDERS JR	RICHARD C
SAWYER	ROSE P
SAYAH	JAMES BUCK
SCHAEFER	LOIS M
SHELL	GEORGE
SCHENK, M.D.	DAVID E.
SCHINDLER	JANICE
SCHLOSSER	CHRISTINE A
SCHLOSSER	DAN
SCHLOSSER	GERALDINE SOWLE
SCHLOSSER	JIM
SCHNEIDER	BEA
SCHOFIELD	NANCY E
SCHOPPER	KATHY M
SCHOSHINSKI	JOAN GALLAGHER
SCHROEDER	ELIZABETH SOULE
SCHUYLER	CONSTANCE COOK
SECKORA	LISA KOHRT
SEVERSON	DORIS
SHEFFIELD	RAYMOND A
SHEPHERDSON	NANCY
SHOVE	ROBERT C
SILVA	ANNE E
SIMMONS	PAUL
SMITH	CLINTON S
SMITH	JEAN A
SOLES	JACKIE W
SOLES	DONALD E
SOLES	JAMES A
SOLLY	WILLIAM G
SOMERTON	W H
SOUKUP	NANCY A
SOULE	JOHN D
SOULE	ASA C
SOULE	J A
SOULE	JACK
SOULE	WARREN E
SOULE	DON M
SOULE	CHARLES E

SOULE	DOUGLAS E
SOULE	FRANCIS G
SOULE	FRED
SOULE	BENJAMIN GILLAN
SOULE	JOHN G
SOULE	WILLIAM L
SOULE	EDWARD H
SOULE	GEORGE
SOULE	BEN GEORGE
SOULE	GARY M
SOULE	GUY V
SOULE	MATILDA
SOULE	LEE CASTLE
SOULE	LEWIS F
SOULE	DAVID P
SOULE	GERALD D
SOULE	HAROLD V
SOULE	MADELINE
SOULE	LAURA ANN
SOULE	RALPH LIONEL
SOULE	CLARENCE
SOULE	WYMAN A
SOULE	RONALD J
SOULE	VICTOR
SOULE	MITCH
SOULE	WILLIS F
SOULE	HERBERT
SOULE	GARDNER N
SOULE	KATE
SOULE	RALPH DAVID
SOULE	ROBERT W
SOULE	DAVID H
SOULE	BRIAN R
SOULE	SHARON G
SOULE	RANDY
SOULE	SCOTT
SOULE	STANLEY E
SOULE	CAROL SAGER
SOULE	MICHAEL STANLEY
SOULE	PETER FAYETTE
SOULE'	JOHN H
SOULE'	CHATTIN B
SOULE'	EDWIN C
SOULE'	HOWARD S
SOULE'	BENJAMIN RUSSELL
SOULE'	FLORENCE R
SOULE'	NORMAN
SOULE'	JAMES J
SOULE'	WILLIAM
SOULE III	FRANK FLINT
SOULE JR	AUGUSTUS W
SOULE JR	CARL W
SOULE' JR	JAMES F
SOULE, JR	THOMAS FRY
SOULES	ROBERT
SOULES	J T
SOULES	HARRY F, JR
SOULES	TIMOTHY R
SOULES	LESLIE L
SOULES	GREG J
SOULES	WILLIAM C
SOULES	STANLEY D
SOULES	WARREN H
SOULES	SCOTT E
SOULES	JAY T
SOULES	W FRED

SOULE KINDRED NEWSLETTER, VOL. XXXIV, NO. 3 AUGUST, 2000

SOULES JR	L H
SOULES SR	WILLIAM R
SOWL	RAYBERT L
SOWL	LE ROY W
SOWL	FRED F
SOWL	FRANK J
SOWLE	AVON J
SOWLE	EDNA L
SOWLE	LEE L
SOWLE	DANIEL D
SOWLES	CHARLES J
SOWLES	EVAN I
SOWLES	LORI
SPECHT	HARLAN
SPEED	BETSY
SPIVEY	LILLIAN SOLES
STALLCOP	DELOS H
STANDISH	NORMAN W
STEINMETZ	JANE HILTON
STEWART	BETTY S
STEWART	LYNDE R
STONE	SUSAN CANDACE WEIGEL
STRASSEL	HAROLD A
SYKES	RUTH S
TAYLOR	JEANETTE E
THORN	KATHARINE N
THROOP	LOUISE WALSH
TIFFIN	JAMES B
TILLEY	PATRICIA A
TINDALL	ROBERT L
TODD	RUTH
TRASK	GEORGE R
TULIS	DEBORAH S
TURNER	PAULA J
TURNER	CHARLES ROCKWELL

TURNER	MARGARET SOULE
TURNER	ANDREW B
VALE	LE
VALENZUELA	CINDI
VANDEN BOSSCHE	SHARON
VAUGHN	JAMES ELDON
VERDOORN	JOAN
VESSELY	PATRICIA
WAGENKNECHT	WALTER CHAPPELL
WALKER	DONALD
WALKER	PATRICIA
WALLACE	ROBERT H
WALRAVEN	MILDRED E
WARNER	JOYCE GOODWIN
WATTS	NANCY BLANCHARD
WERNER	MARK
WERSLAND	LOUANN E
WHITE	MARY L
WHITCOTTEN	GLENN L
WHITCOTTEN	JOHN P
WHITING MD	GEORGE L
WHITMAN	CLINTON
WILHELM	DOROTHEA M
WILKES	NILS
WILLIAMS	BARBARA F
WITTERS	BROOKE
WITTERS	MARYANNE
WOCHNICK	FELIX J
WOLCOTT	LARRY B
WOLFF	MAEVON N
WYLIE	BEVERLY J
YOUNG	KIMBALL L



SOULE KINDRED MEMBERSHIP FORM

The Soule Kindred In America was formed in 1967 by a group of dedicated people who were interested in preserving and passing information on to future generations. . The Soule Kindred is a non-profit organization incorporated in Massachusetts in 1972. Through the diligence of the first president George Soule and Colonel John Soule, direct descendants of the Mayflower George Soule, a great heritage was found to have been left by our founding fathers.

Through the Soule Kindred quarterly publication, *Soule Newsletter*, information of genealogical value is disseminated to its members. Reading back issues of the *Soule Newsletter* is like walking through American and European History, after all, Europe is where most of our ancestors lived. Current news items about Soule Kindred members' activities bring "cousin to cousin" closer.

Genealogy records are available through the Soule Kindred historian to assist those interested in tracing their family roots. The Soule Kindred has microfilm records containing hundreds of names and information back to the Mayflower passenger George Soule.

Soule Kindred membership lists are published annually leading you to a whole new world of "cousins."

The annual Soule Kindred Reunion, held in a different city each year, offers an opportunity to meet your new "cousins" and make long lasting friendships.

There are no restrictions to joining the Soule Kindred. Your name does not have to be Sole, Soule, Sowle, Soules, or even begin with an "S." We have Jones, Abraham, Boyd, Edwards, Myers, Turner and many other names in our membership.

If the idea finding your roots and meeting new "cousins" appeals to you, we invite you to send in your application and join with us in researching and celebrating our fascinating heritage.

Please send this membership application along with a check made payable to Soule Kindred In America, Inc. To:

Betty Jean Haner, Treasurer  
53 New Shaker Road  
Albany, NY 12205-3615

Student (to age 22)	\$7.50
Regular Membership	\$15.00
Sustaining Membership	\$25.00
Patron Membership	\$50.00
Life Membership	\$200.00

Please enter my membership to the Soule Kindred In America, Inc. Enter your name and address as you wish it to appear on the *Soule Newsletter* mailing label.

NAME \_\_\_\_\_

STREET ADDRESS \_\_\_\_\_

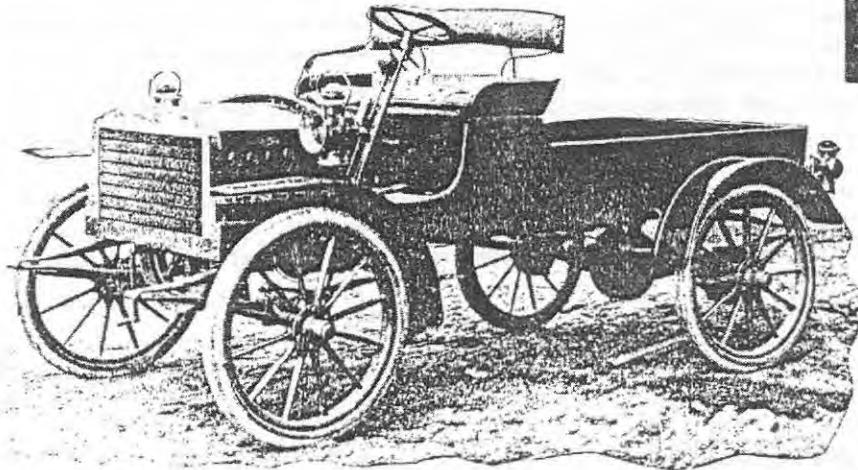
CITY \_\_\_\_\_ STATE \_\_\_\_\_ ZIP \_\_\_\_\_

Introduced by: \_\_\_\_\_

**MEMBERS:** Please make extra copies of this introduction and pass them out to interested people. Be sure to include your name in the "Introduced by:" area.

**NEW MEMBERS:** If you have not yet received a New Member packet containing letter, by-laws, family data sheets and membership card, please notify Betty Jean Haner at the address above.

# The SOULES DELIVERY WAGON



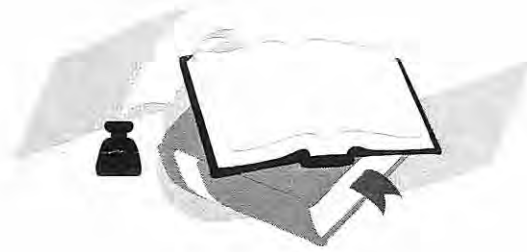
Lots of power; lots of strength; simplicity of construction and durability. These, together with moderate price are what must be combined to make the ideal delivery car, which is to carry a load not in excess of 1500 pounds.

**The Soules Delivery Wagon** is equipped with a double opposed engine, with  $5\frac{1}{2} \times 5$  in. cylinders, located under the hood. Sliding Gear Transmission, two speeds forward and reverse. Practically all working parts of the machine are directly under the hood, or the floor-boards under the operator's feet, which is the only form of construction suitable for delivery wagons, as it would not be practicable to remove the load in order to make repairs if necessary.

Dealers throughout the country thus far have failed to fully appreciate the desirability of building up the commercial end of the motor car business. The day is not far distant when it will be more satisfactory and profitable than the pleasure vehicle, and the agent who takes hold of this branch of the business early will get his experience in time to reap the reward of a big boom later, besides adding a fair amount to his profits at present. **THE SOULES DELIVERY WAGON** is the only car to-day of a moderate price, which is built for the purpose for which it is intended. It is not a pleasure vehicle chassis with a delivery wagon body, but is built for one purpose that of carrying a paying load of at least 1500 pounds.

Correspondence Solicited

*Soules Motor Car Co., Grand Rapids, Mich.*  
Sales Department, Detroit, Mich.



### SOULE KINDRED NEWSLETTER ORDER FORM

1967 - 1990 issues - \$2.50 per issue; \$10.00 for 1 year of issues  
1991 - present issues - \$3.75 per issue; \$15.00 for 1 year of issues

Complete sets are available for \$125.00 (excluding copies not listed below) plus \$10.00 shipping in the US. Copies not listed below can be copied at a cost of 5 cents per page plus collating and stapling charges.

I enclose \$ \_\_\_\_\_ for \_\_\_\_\_ copies of back issues as checked.

1967-V. 1	#1( )		#3( )		1984-V. 18	#1( )	#2( )	#3( )	#4( )
1968-V. 2	#1( )	#2( )	#3( )		1985-V. 19	#1( )	#2( )	#3( )	#4( )
1969-V. 3	#1( )	#2( )	#3( )		1986-V. 20	#1( )	#2( )	#3( )	
1970-V. 4			#3( )		1987-V. 21	#1( )	#2( )	#3( )	#4( )
1971-V. 5	#1( )	#2( )	#3( )		1988-V. 22	#1( )	#2( )	#3( )	#4( )
1972-V. 6		#2( )	#3( )	#4( )	1989-V. 23	#1( )	#2( )	#3( )	#4( )
1973-V. 7	#1( )	#2( )	#3( )	#4( )	1990-V. 24	#1( )	#2( )		#4( )
1974-V. 8	#1( )	#2( )	#3( )	#4( )	1991-V. 25	#1( )	#2( )		#4( )
1975-V. 9	#1( )	#2( )	#3( )	#4( )	1992-V. 26	#1( )	#2( )	#3( )	#4( )
1976-V. 10	#1( )	#2( )	#3( )	#4( )	1993-V. 27		#2( )		
1977-V. 11	#1( )	#2( )	#3( )	#4( )	1994-V. 28	#1( )	#2( )	#3( )	N/A
1978-V. 12	#1( )	#2( )	#3( )	#4( )	1995-V. 29		#2( )		N/A
1979-V. 13	#1( )	#2( )	#3( )	#4( )	1996-V. 30	#1( )	#2( )	#3( )	N/A
1980-V. 14	#1( )	#2( )	#3( )	#4( )	1997-V. 31	#1( )	#2( )	#3( )	#4( )
1981-V. 15	#1( )	#2( )	#3( )	#4( )	1998-V. 32	#1( )		#3( )	#4( )
1982-V. 16	#1( )	#2( )	#3( )	#4( )	1999-V. 33			#3( )	#4( )
1983-V. 17	#1( )	#2( )	#3( )	#4( )	2000-v. 34	#1( )	#2( )	#3( )	

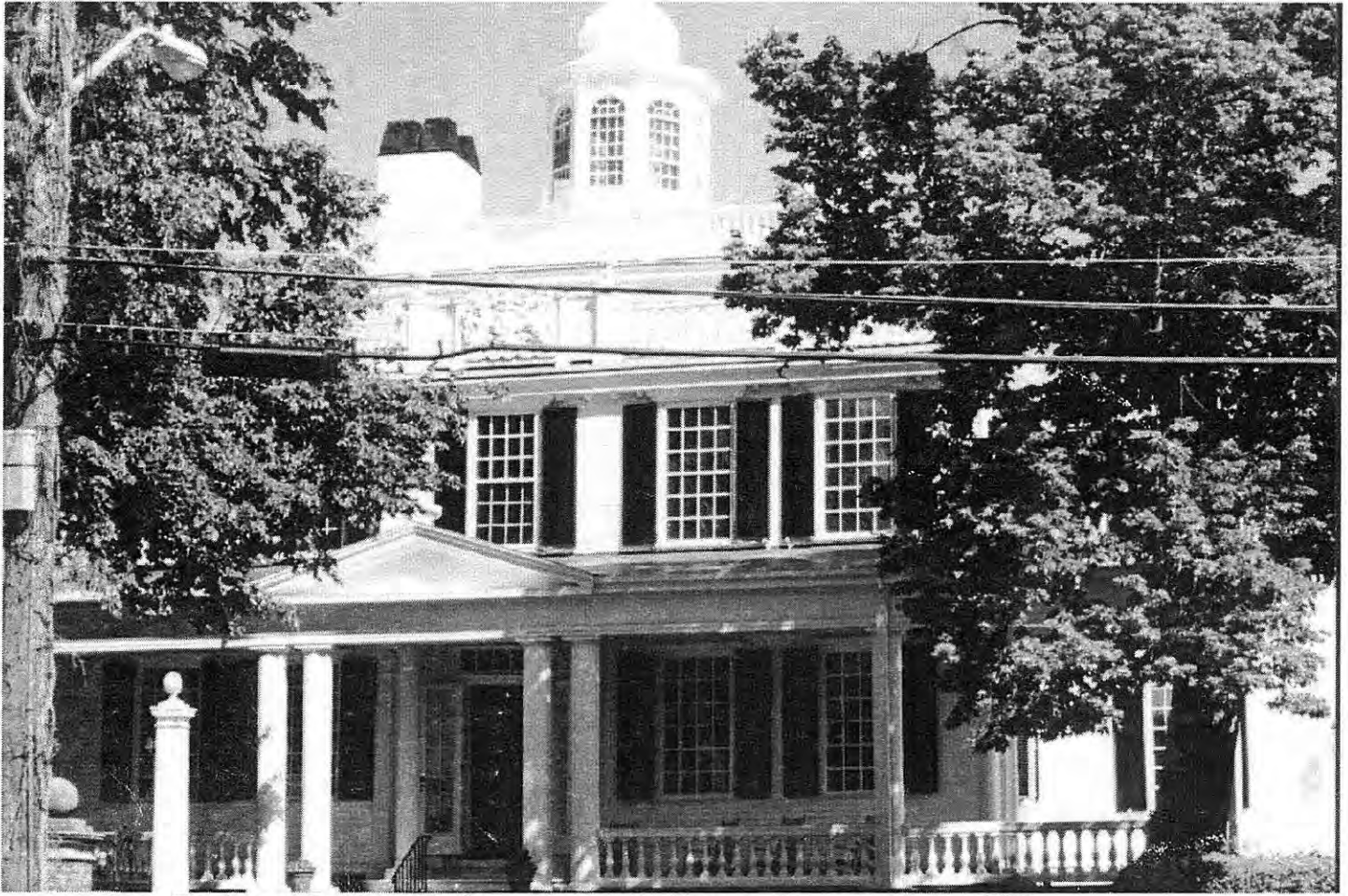
Send this form along with your check made payable to Soule Kindred In America, Inc. to:

Betty-Jean Haner  
53 New Shaker Rd.  
Albany, NY 12205-3615

NAME  \_\_\_\_\_

STREET ADDRESS \_\_\_\_\_

CITY \_\_\_\_\_ STATE \_\_\_\_\_ ZIP \_\_\_\_\_



House, The General Society of Mayflower Descendants, Plymouth, Massachusetts, June 1998



SOULE KINDRED IN AMERICA, INC.  
53 NEW SHAKER ROAD  
ALBANY, NEW YORK 12205-3615

NON-PROFIT ORG.  
U.S. POSTAGE  
**PAID**  
ST. LOUIS, MO  
PERMIT No. 4384

ADDRESS SERVICE REQUESTED

CHARLES J SOWLES  
PO BOX 329  
ST FRANCISVILLE, IL 62460