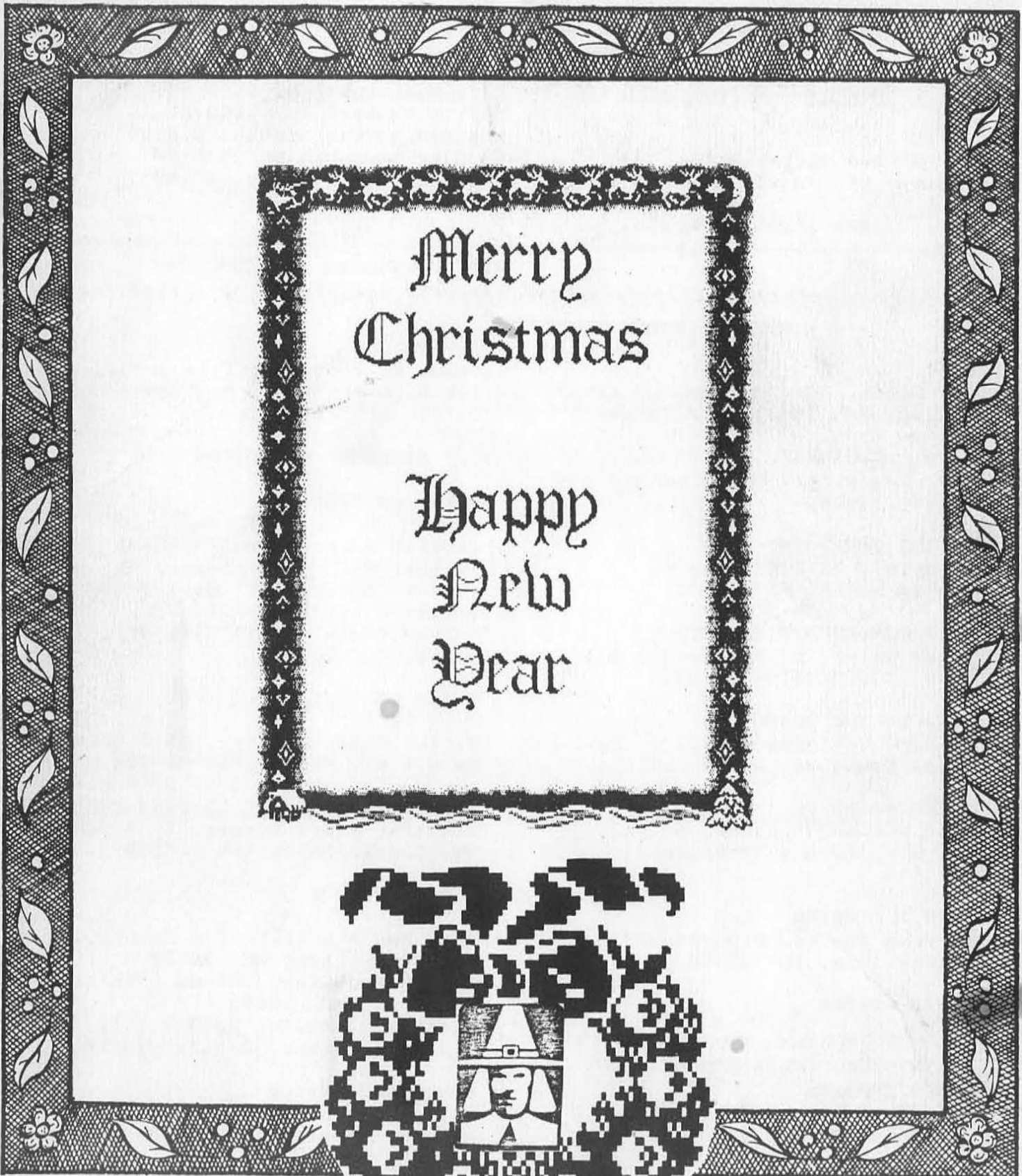


SOULE NEWSLETTER

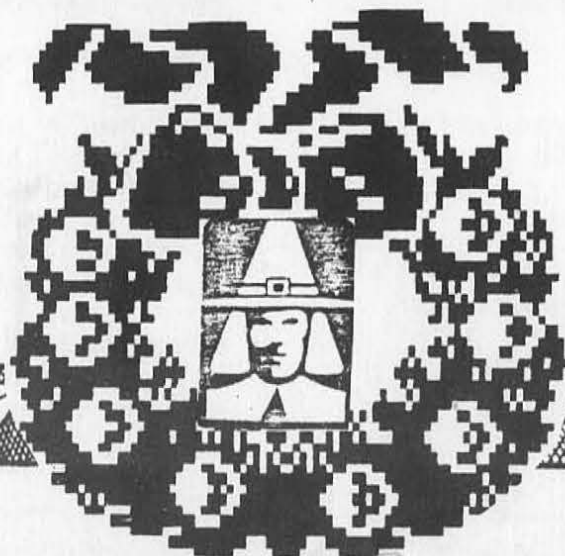
Library of Congress No. c371, s717, Vol XXIV, No. 4, October
1990, p 93

Published by Soule Kindred Inc., 53 New Shaker Rd. Albany,
NY 12205



Merry
Christmas

Happy
New
Year



The SOULE KINDRED NEWSLETTER is published quarterly (January, April, July and October) by Soule Kindred in America, Inc. Dues are \$15.00 per year; subscriptions will begin with the first issue of the current year. Late subscribers will be sent back issues for the current year. Subscriptions with checks made payable to Soule Kindred should be sent to the Treasurer at 53 New Shaker Rd., Albany, NY 12205.

© Soule Kindred 1990

53 New Shaker Road
Albany, NY 12205

ISSN #0584-164X

Life Membership...\$200.00
Patron Membership...\$50.00
Sustaining Membership..\$25.00
Regular Membership...\$15.00
Students (to age 22)..\$7.50

IRS Tax Number 23 7253936

#####

SOULE KINDRED OFFICERS

PRESIDENT

James I. Soule, 1314 Marquette, #1703
Minneapolis, MN 55403 612-340-9319

FIRST VICE-PRESIDENT

Ronald J. Soule, 420 Heron Lane
Fallon, NV 89406

SECOND VICE PRESIDENT

Norman Soule', 9011 SE 88th St.,
Silvypshore Ocala, FL 32672

TREASURER/MEMBERSHIP SECRETARY

Betty Jean Haner, 53 New Shaker Road,
Albany NY 12205 518-869-8368

SECRETARY TO THE BOARD

Christine A. Schlosser, 9629 N. Deerwood
Dr., Brown Deer, WI 53209

FAMILY HISTORIAN

Geraldine Sowle Schlosser, 801 E.
Brownell St., Tomah, WI 54660
608-372-7018

ASSOCIATE HISTORIAN

Charles Jack Sowles, P.O. Box 329
St. Francisville, IL 62460

NEWSLETTER EDITOR

Vacancy: Send Materials for publication to
President James Soule

NEWSLETTER INDEXER

Jim Schlosser, 801 E. Brownell St.,
Tomah, WI 54660 608-372-7018

COUNSELLOR

James B. Tiffin, Tiffin & Tiffin,
125 High St., Rm 1117, Boston, MA
02110 617-482-1230

BOARD OF DIRECTORS

CLASS OF 1990

Deborah Jerome (Mrs. Michael) 55 Lady
Slipper Circle, Pembroke, MA 02359
Eugene Johnson, 261 West Holly Dr.,
Orange City, FL 32763
Norman Soule', 9011 88th St.,
Ocala, FL 32672

CLASS OF 1991

Eloise Soule Nielsen, 2318 North
Gale Ave., Peoria, IL 61604
Ben George Soule, 4701 S. Arden Ave.,
Sioux Falls, SD 57103-5243 605-336-0320
Margaret Soule Turner, 5773 Oakland Ter
#E, Indianapolis, IN 46220

CLASS OF 1992

Mary Soule Kelly, 1218 Fourth Ave W.,
Hendersonville, NC 28739
Bonnie Wochnick, 705 SE 17th St.,
Owatonna, MN 55060
Stanley E. Soule, PO Box 1223
Bedford, Quebec, Canada JOJ1AO

PERMANENT OFFICE

Betty-Jean Haner, 53 New Shaker Road,
Albany, NY 12205 518-869-8368

TABLE OF CONTENTS

HOLIDAY GREETINGS (COVER) _____ 93

OFFICER'S PAGE _____ 94

PRESIDENT'S PEN-----96

MEMORIALS _____ 97-98

ANNUAL BOARD MINUTES 8-17-90 _____ 99-101

TREASURER'S REPORT _____ 102

HISTORIAN'S REPORT _____ 103-105

RECORDING FAMILY DATA _____ 106

FAMILY INFORMATION _____ 109

MONTREAL REUNION MEMORIES _____ 111

MILESTONES _____ 114

SOULE KINDRED Topical Index Vol 16.-20, '82-'86 _____ 117

ORDERING INFORMATION _____ 123

+++++

Greetings!

This Newsletter is late I know, but it completes our 24th year of quarterly publication. The issue of the first quarter of 1991 will be our TWENTY-FIFTH Edition. A Silver Anniversary!!! Since we do not have an editor on board, I have prepared this edition for the KINDRED. Please send your items for inclusion in the next issue to me. How about some early recollections of the beginnings of SOULE KINDRED in AMERICA. We will inaugurate our Silver Anniversary edition with recollections.

Jim Soule - President
 SOULE KINDRED in America

PRESIDENT ' S PEN

Each SOULE KINDRED reunion seems to develop a charm and character of its own. We surely were not disappointed with the Reunion in Montreal which provided a remarkably entertaining setting for those who had not visited 'French' Canada before. We express to our very capable host, Stan and Carol Soule, our deep thanks on behalf of all the Kindred for their excellent planning. It was an outstanding reunion, well-arranged and hosted in fine Canadian hospitality. In this issue, find memories of the Montreal reunion that I hope you will enjoy. There were many new faces in Montreal, I hope the events of this reunion report encourage other members to attend next year's reunion.

Tributes to George Standish Soule were read at the reunion and at his home in Wynnestay in Philadelphia. George was co-founder of Soule Kindred in America and will be fondly remembered into the distant years ahead. All of the members of Soule Kindred owe a deep debt of gratitude to George Standish Soule for his hard work and deep involvement to see to it that the Kindred Society we know today would be established on sound principles with an eye toward an organization that would continue to serve as a distinguished family society amongst the Mayflower families.

You will notice in the board minutes that an invitation was extended by Shirley Cook Hatch and Constance Cook Schuyler to come to Annapolis and celebrate the 90th birthday of their great aunt Shirley Soule Smith. Shirley has been a very active member of the Kindred since the early years and we look forward to celebrating her birthday and reunion together.

I wish you all a happy holiday season and look forward to serving as your president in 1991.

Jim Soule
Jim Soule



President Jim working on this issue of the NEWSLETTER. He needs a new Editor. Please call or write!

BEN GEORGE AND JANIE SOULE SCENIC HILLS

4701 S. Arden Avenue • Sioux Falls, SD 57103-5243 • (605) 336-0326

14 August 1990

IN MEMORY OF GEORGE STANDISH SOULE

I knew GEORGE SOULE as a fellow Cousin of Soule Kindred In America, a national family organization which he co-founded.

Throughout the 24 years of our association, George was known to all as an earnestly conscientious contributing member.

His examples set and demonstrated were those of industry and ability.

He leaves a legacy of generous and sincere giving of self.

Such qualities of personality are unforgettable and we most certainly shall miss him.

It is altogether fitting, I believe, that this memorial service dedicated to memories of his life of service be conducted at his beloved Wynnestay where his hand labors of love survive him.

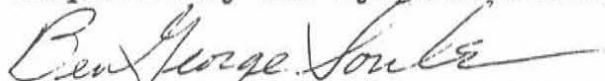
I shared his love of country and deeply imbued patriotism and I salute his attainments of naval officer and dedicated professional engineer.
His was a life of accomplishments.

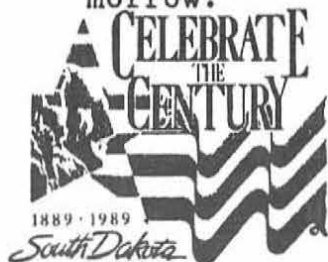
The GEORGE SOULE that I knew, would, I feel, approve of the following portion of the poem, "I'm Free."

"If my parting has left a void, then fill it with remembered joy.
A friendship shared, a laugh, a kiss. Ah yes, these things I too will miss.
To laugh, to love, to work or play. Tasks left undone must stay that way.
Be not burdened with times of sorrow, I wish you the sunshine of tomorrow.

My life's been full, I've savored much,
good friends, good times, a loved one's touch.
Perhaps my time seemed all too brief,
don't lengthen it now with undue grief.
Lift up your heart and share with me,
God wanted me now, He set me free."

Respectfully and sympathetically submitted,


Ben George Soule, Past President, Soule Kindred



GEORGE STANDISH SOULE

Letter read at his Memorial Service at Wynnestay, August 20th 1990

George Standish Soule was a co-founder of the Soule Kindred in America. George and Colonel John Soule together organized the family society in 1967. Other family societies of Pilgrim decent were formally organized earlier but finally it was George and Colonel John who got the job done. A newsletter was established with George as Editor. Colonel John became Historian and Genealogist for the group. The Colonel had collected genealogy for many years on the decendants of George Soule, Pilgrim.

Colonel John was older and most dignified, but George was the young, energetic and able partner. With Colonel John's research and George's energy the Soule Kindred in America was well established and continues.

In 1976 the Soule Kindred held it's annual meeting in Philadelphia. Those of the group who atteded will never forget the wonderful memories George gave us. He had organized the three days so brilliantly with tours and trips that all of us, (about 75) were carefully and comfortably taken across the city by car, bus and streetcar. We went to Valley Forge; had luncheon at the Academy; to the birthplace of our Republic, Independence Hall, and to the Liberty Bell. He had arranged a meeting with the Mayor at City Hall where the Mayor met with us. It was like a perfect dream for old and young alike as we savored our country's beginings. together as a large American family. It ended with a tea at Wynnestay given by the Philadelphia Mayflower Society. Thank you again dear George.

He gave so much of himself tqhis Kindred family that it seems ironic and somehow sad that he chose not to have a family of his own.

One day during that 1976 family reunion Wynnestay was well decorated with flags. Though they were on the other side in history, British flags were placed on the graves of the British soldiers who had fallen in the Revolution. They seemed at peace and happy there in the yard. And now it is fitting that dear George rests easily with them.

Thanks again George Standish Soule and God Bless you,

Mrs. Edwin S. Harris
Soule Kindred in America



M O N T R E A L 1 9 9 0

MINUTES OF THE BOARD MEETING 8/17/90

The meeting was called to order by the President, James Soule at 9:05 AM with the following Board members present: James I. Soule, President; Geraldine Sowle Schlosser, First Vice President; Betty Jean Haner, Treasurer/Membership Secretary; Christine Schlosser, Secretary; Jim Schlosser, Newsletter Indexer; Eugene Johnson and Norman Soule', Class of 1990; Eloise Soule Nielsen and Margaret Soule Turner, Class of 1991; Mary Soule Kelly and Stanley E. Soule, Class of 1992.

The secretary (Chris Schlosser) moved that we accept the minutes from the last board meeting as published in the October 1989 issue of the newsletter. Peggy Turner seconded and the motion carried.

The treasurer (Betty Jean Haner) presented an annual report through August 10, 1990. Major expenses over the past year included the purchase of a microfilm reader/printer for use by the historian and the moving of Milton Terry's files from New Jersey to Wisconsin. The current balance on hand was \$47,892.88. We were audited this past year by Margaret A. Rocke, CPA. Norman Soule' moved that we accept the treasurer's report. Eloise Nielson seconded and the motion carried.

The membership secretary (Betty Jean Haner) reported that she handled 103 letters of correspondence over the past year. Fifty-six reminders were sent out in April with the final outcome of 38 non-renewals. We currently have 263 regular members, 1 patron, and 80 lifetime. Peg Turner moved that we accept this report. Jim Schlosser seconded and the motion carried.

I have included the historians report detailing the correspondence which occurred, the movement of Soule Kindred records and other information. In addition to the attached report, the following actions were taken based on the discussion which occurred during the report:

A motion was made by Chris Schlosser to adopt the following policy statement for research:

People seeking to confirm or add to information on a line to George Soule are not required to join the Kindred but should be encouraged to join. Priority will be given to Soule Kindred members. In the case of a paid geneologist seeking assistance for others, they will be appropriately charged for time, materials and postage.

The motion was seconded by Stan Soule and carried with one vote against.

CONTINUED...NEXT PAGE...

Continued from previous page...

A motion was made by Peg Turner to adopt the following policy statement concerning advertisements in the newsletter:

We will no longer permit advertisements by geneologists in the Soule Kindred Newsletter.

The motion was seconded by Eloise Nielson and carried unanimously.

There was a discussion concerning copyright laws and it was concluded that, as a society, we clearly stay within the limits of the law.

Betty Jean Haner moved that we authorize the reprinting of 15 copies of the Soule Kindred Index by Milton Terry and the printing of 25 copies of the Spousal Index by Jim Schlosser. The price for each index will be \$10.00 to cover printing and postage. Norman Soule' seconded and the motion carried. The following should appear on the title page of each index: "Printed and Published by Soule Kindred In America. Reproduction Prohibited."

There was no report from the Newsletter Indexer (Jim Schlosser).

The president (Jim Soule) heartily thanked our hosts for this 1990 reunion. He noted that over the past year, we mourned the loss of three long-standing members of the Kindred: August Kling, Isabelle Freeman and our co-founder, George Standish Soule. We will greatly miss them.

The scholarship committee represented by Betty Jean Haner reported that we had two outstanding applicants who also happened to be first cousins. Richard Thomas Ritter will receive the Colonel John E. Soule Scholarship. Betty Jean moved that we present a \$500 scholarship in memory of George Standish Soule this year. Mary Soule Kelly seconded and the motion carried. This scholarship will be given to Michael Oakley Soule. Last years' recipient returned the scholarship money since he was not attending school. The scholarship committee then awarded the 1989 Colonel John E. Soule scholarship to Tamara Woolcott. Mary Soule Kelly moved that we increase the Colonel John E. Soule scholarship from \$500 to \$1000 effective for the upcoming year. Gene Johnson seconded and the motion carried.

The next item on the agenda was election of officers. Norman Soule' moved that we retain all currently elected officers (Jim Soule- President, Ronald Soule- 1st Vice President; Norman Soule' -Second Vice-President; Betty-Jean Haner -Treasurer/Membership Secretary; Chris Schlosser - Secretary to the Board). Peg Turner seconded and the motion carried. The appointment of offices was as follows:

CONTINUED on next page...

Continued from previous page...

Historian -- Geraldine Schlosser
moved by Betty Jean Haner seconded by Peg Turner
Assoc Historian -- abolished due to insufficient need
moved by Betty Jean Haner seconded by Stan Soule
Newsletter Indexer -- Jim Schlosser
moved by Peg Turner seconded by Mary Soule Kelly
Counsellor -- James Tiffin
moved by Betty Jean Haner seconded by Peg Turner
Newsletter Editor -- none appointed but still searching

All appointments were carried unanimously.

Gerry Schlosser moved that we elect the following as the Class of 1993:

Eugene Johnson
Mary Jones
Chester Witters


Mary Soule Kelly seconded and the motion carried.

There was no old business.

New business consisted of choosing a site for the 1991 reunion. An invitation was received from Shirley Cook Hatch and Constance Cook Schuyler to join in the celebration of their Great Aunt Shirley Soule Smith's 90th birthday in Annapolis Maryland. Invitations were also received from Ron Soule to come to Reno Nevada and Gene Johnson for Orlando Florida. Betty Jean Haner moved to accept the Annapolis invitation. Gerry Schlosser seconded and the motion carried. Peg Turner moved to accept the Reno Nevada invitation for 1992. Gene Johnson seconded and the motion carried.

Chris Schlosser moved to adjourn the meeting (mostly because her hand was getting extremely tired). Jim Schlosser seconded and the meeting was adjourned at 10:40.

Respectfully submitted


Chris Schlosser
Secretary to the Board

End of Board Minutes 1990

SOULE KINDRED

BETTY-JEAN HANER, TREASURER

53 NEW SHAKER ROAD

ALBANY, NEW YORK 12205-3615

ANNUAL REPORT

For the period August 9, 1989 to August 10, 1990

Balance on hand August 9, 1989 \$47,405.34

RECEIPTS

Dues	\$4,125.50	
Newsletters(38 sold-about 70 given to Libraries to complete sets)	95.00	
Col. John E. Soule Scholarship Donations	50.00	
Col J.E. Soule Scholarship (Life Memberships)	200.00 (2)	
Patron Membership	50.00	
Cup Plates	28.00	
Miscellaneous	13.75	4,567.00
Interest	3,885.83	<u>3,885.83</u>
		\$56,060.17

EXPENSES

Newsletters (Typing, Mailing Permit,Postage, etc.) 3 issues + advance postage for July issue	1,928.22	
Office Expenses of Membership Secretary-Treasurer (includes typing, copies,postage, supplies, mailing labels for Newsletters, etc.)	477.72	
Storage (10 months @ \$59 and 3 months @ \$61)	773.00	
Historian (phone, copies, supplies, postage)	91.71	
Microfilm Reader Printer	3,050.00	
Moving Historian Files from N.J. to Tomah, Wisconsin	1,396.23	
Moving other materials to Albany, N.Y.	159.91	
Note paper (New Supply ordered)	190.50	
Gift to Conrad Presbyterian Church (Thank you for services of Rev. Tim Soule at '89 Reunion)	100.00	<u>8,167.29</u>
		\$47,892.88

SAVINGS ACCOUNT NO. BANK ACCOUNT NAME

Northeast Savings		
1-175630-1	5 Generations CD	\$8,505.21*
1-163853-3	Estate CD	14,396.19
1-16385-41	Memorial Savings Certificate	4,772.12
1-090946-3	Scholarship Savings	657.02
1163855-8	Life Membership CD	11,836.59
1-089-791-6	Savings-Operating Expenses	1,293.47
2-018790-2	5 Generations - Money Market	4,819.91
1-167312-6	Life Membership Savings Certificate	1,287.85
03970753	Checking Account	<u>324.52</u>

BALANCE ON HAND August 10, 1990 \$47,892.88

ALL BILLS PAID

*Interest on this account is added to account 1-089-791-6, used for operating expenses.

*Account E 617-063 was closed during 1989-90 year, the balance added to account 1-090-9463

Note: The Bank changed computers and account numbers during 1989-90 fiscal year.

Respectfully submitted,

Betty-Jean Haner

Betty-Jean Haner, Treasurer

SOULE KINDRED IN AMERICA, INC.

HISTORIAN ANNUAL REPORT, August 1990

CORRESPONDENCE

Since assuming the position of Historian in February 1989, I have felt that the most important part of the job for now is answering correspondence in a timely manner. I have received during the time period 110 letters or phone calls. Some of these were from Kindred members sending in family group sheets, and required merely a note of thanks. Others were queries about lineages that required research in our files. Some of these we've been able to help-- others still remain question marks, and we continue to try to find answers.

By July 24th 1990, I had answered 77 of these letters, with 16 unanswered. (Somehow that doesn't add up! I guess that's because I had more than one letter from some individuals before I replied.) The important thing is that I am keeping at it, and making progress, I think. I should like to mention that I spend an average of 8 hours on each letter, considering research time. I try to answer letters in the order in which they are received, and Kindred members come first.

HISTORIAN'S BOOKS AND RECORDS

In January 1990 I received shipment from New Jersey of materials that had been stored with Milton Terry. There were 2 file cabinets, a book case, and 15 cartons of books and papers. Because we knew that we would be moving in a few months, I did not even open the cartons at that time. In retrospect that maybe was not a good idea. When we opened them in April, we discovered some books and papers were water-stained and mildewed. This was during a period of gloomy weather in Wisconsin when we had about 2 days of sunshine in 14! The classic antidote for mildew and mold in books & papers is exposure to sunlight. In desperation I used the microwave to dry out some. Complicating matters was the fact that I was highly allergic to the mold and mildew, and couldn't work with the material with my weepy eyes and sneezy and runny nose.

Exterior examination of the cartons did not indicate any sign of their being dampened in transit-- unless they had been repacked in dry boxes.

Books

Using a library computer program, I have cataloged 56 books, about 1/2 of those received. A catalog card file lists the books by author, title, and subject. Labels have been made for the spine, and the books cover about 6 feet of shelf space. I have listed the *New England Historical & Genealogical Register* which covers 1947-1980, with a few issues missing. *The American Genealogist* (1976-1980),

Mayflower Quarterly, and *National Genealogical Society Quarterly* I have not inventoried.

Files

The so-called "tub" files were supposedly separated by family number, and these have been filed. Quite a bit of this material duplicates what is on the microfilm. I still have one carton of files that was unclassified. I don't think that the packers made any effort to pack things in any semblance of order.

Card files

There are 5 drawers of card files in one of the filing cabinets. As yet, I haven't been able to determine their usage. They were begun by Col. John Soule. It has not been a high-priority item to straighten these out (they were dumped and mixed up in transit).

Notebooks

There are three cartons of notebooks which I am just beginning to sort out. They seem to contain vital records of various states, census, etc. I should point out that at this time two walls in my office are already floor to ceiling books! We will put shelves in an adjacent room for the overflow and I will try to get through the notebooks in the next few months so that we know what we have.

OTHER ACTIVITIES

Soule Kindred Index

I helped Jack Sowles in trying to set up a supplementary index to Dr. Terry's original. It was scheduled to be printed in the July Newsletter. This was rather frustrating, working by mail and phone, and very time-consuming. He and I disagree on the importance and format of such an index, so I don't intend to continue. It is up to this meeting to decide if Jack should go on alone.

Soule Descendants with Other Surnames

I have started a card file of Soule descendants with other surnames, and their spouses. This has been generated by the many family sheets received from 5th and 6th generation to the present. The lineage of each person, birth, marriage and death dates are included on the cards, as well as the 4-digit family number assigned the 5th generation descendants and the name of the person submitting the information. This is a working file, and I do not plan publication. If anyone is interested in a surname he/she can call or write me for information.

I hope that this explains somewhat the work of the historian. Remember that this is a very time-consuming volunteer position, and don't judge too harshly if your letter is not answered by return mail.

FAMILY HISTORIAN'S REPORT

by Geraldine Sowle Schlosser

This will be a very short report to update that made at our Montreal reunion.

Perhaps some of you heard of the cloudburst that occurred in my town of Tomah, WI in August, at the time that we were in Montreal. Over 8 inches of rain fell in about 3 hours. Although we were not in the flooded area near our lake, the soil here is not capable of absorbing that much water. So when we returned on Wednesday, we discovered that water had been seeping in our lower level since Sunday, partly due to a malfunctioning sump pump. We had to move everything out of that level-- and this included all Soule Kindred material, my genealogy books, computers, desks, files, bookcases, etc. in order to rip out carpeting and dry things out. By the first of October we had moved back in, but all books and magazines are still not shelved.

Elsewhere in the Newsletter is a report from Brooke Witters that she wrote at my request. Brooke attended the Montreal reunion with her grandparents. Please, other Kindred grandparents, show this to your grandchildren to encourage their interest.

New board member Mary Jones is descended from George Soule's daughter Patience. She'd like to find others with a similar line: George¹ Soule, Patience², Susanna³ Haskell, Ralph⁴ Paine, Eleanor⁵ Paine, Ruth⁶ Evans, Ellen Evans⁷ Barnaby, Ambrose Barnaby⁸ Clark, George H.⁹ Clark, Mary E.¹⁰ Clark Jones. You could write her at 419 W. Market St., Georgetown, DE 19947.

Geraldine Sowle Schlosser
801 E. Brownell St.
Tomah, WI 54660-2201

RECORDING OF FAMILY DATA

By Geraldine Sowle Schlosser, Soule Kindred Historian

One of the objectives of Soule Kindred is the gathering of information pertaining to the descendants of Pilgrim George Soule. Mayflower Families 3 covers the first 5 generations, to about 1800. Our families did a lot of moving around in the 19th century, and you can help locate migration patterns for family groups. That is why the Family Data Chart is printed in each issue of the Newsletter. Our historian may be able to help you with that "missing link". So please keep the information coming.

We would like to suggest that you begin with your sixth generation ancestor from George Soule (or your earliest Soule ancestor, if you haven't made the connection to George¹). Fill out a form for that ancestor, and then submit forms for each of your ancestors down to yourself. This is especially important if you descend through a female line; Soule women who marry tend to become lost Soules.

We'll give a short explanation of how to fill out the form. Samples were printed in V. 20, #2 and #3-- April and July, if you'd like to refer to those.

(1) The "Generation" space in the upper left corner shows the generation from the immigrant ancestor. Please leave it blank unless you are certain.

(2) In the far upper space on the right for "FAMILY", leave it blank if the surname of "Soule Descendant" is SOULE, SOWLE, or variants, because we'll assign a code number for closely related family groups. If the "Soule Descendant" has a different surname, insert the name in the right upper space.

(3) The next two lines show the ancestors of the "Soule Descendant" back to George Soule¹. Unless you have an approved Mayflower Lineage or other positive proof, we suggest this be left blank.

(4) When writing dates, follow the genealogical style-- first the day in numbers, then the month in letters, and the full year, such as 6 Feb 1833.

(5) When listing children on the reverse side, put in as much information as you can-- such as spouse's parents, if known.

(6) List your name and address as compiler unless someone else gathers the information. We may need to contact the compiler.

(7) It is VERY important to list sources of data; if the information comes from a family Bible or other record, a photocopy of the information should be included. Other sources, such as Vital Records from towns or states, and census should be indicated.

(8) Leave "Verification" blank for our purposes.

(9) Please give as many clues as possible to facilitate further research. If you are uncertain about a date, enter it, but add "circa" or "ca". For questionable place names, add "possibly" or "probably".

Send completed forms to our Historian:

Geraldine Sowle Schlosser
801 E. Brownell St.
Tomah, WI 54660

Soule Kindred

	Generation	Family
Soule Descendant	_____	
Ancestral Line	(_____)	
Parentage	son/dau of _____ and _____ (_____)	
Birth or baptism	was b _____ at _____	
Death	died _____ at _____	
Burial	buried at _____ Cemetery	
Residences and removals	Resided _____	
Occupation	_____	
Military service	_____	
Other biographical data	_____ _____ _____ _____ _____	
	He/She married _____	
	on _____ at _____	
Parentage	son/dau of _____ and _____ (_____)	
Birth or Baptism	He/She was b _____ at _____	
Death	and died _____ at _____	
Burial	buried at _____ Cemetery	
Biographical	_____ _____ _____	
Other marriages	_____ _____ _____	

HOW I DEVELOPED MY INTEREST IN GENEALOGY

My first interest in genealogy was when I was seven. We were studying the Pilgrims in school. When I told my father this he told me I was related to a pilgrim. He did not know the name or how I was related.

I had always loved history so when I heard this I wasted no time at all. I quickly ran to the phone and called my grandfather. He told me I was descended from George Soule, but he didn't know how.

The next summer we went to Plymouth Massachusetts. We visited Plymouth Rock, the Mayflower II, and Plymouth Plantation, each time referring to George. In reply we heard the family had been skunked, they had been out harvesting in the fields, and various other answers.

We were told to visit the Mayflower Society, and finally arrived at the beautiful library. Two busy librarians were closing the building. We told them our story and no sooner had we ended then the kind women said happily "Come on in, We don't mind staying late."

My grandfather knew that his grandmother, Mary Augusta [Soule] Witters, was a Soule, but that was it. We worked hard that night and found much of our ancestry.

In a couple of years, with the help of Mrs. Gerry Schlosser, we had filled in many gaps, had a complete Soule notebook, a couple of Soule books, and established our line: George, George, Nathan, Timothy, Joseph, Joseph, Hiram

(continued from previous page)

Barlow, Mary Augusta [Soule] Witters, Harry Witters, Chester Witters, Roger Witters and Me!

Before I knew it I had a subscription to the Soule Newsletter, Christine Schlosser had sent me a Soule Kindred card, and I was at the 1990 Soule Kindred Reunion in Montreal. But to this day there are questions to be answered and the Soule search still goes on.

Brooke Witters

age 13

Sherman Ct. 1990



Brooke Witters seated between her Grandparents Chester and Mary Anne Witters at the Montreal reunion.

MONTREAL REUNION MEMORIES

1990 REUNION-MONTREAL
AUGUST, 15-19th 1990

SOULE KINDRED REUNION
1990

REGISTERED AT RAMADA

ROOM NO.	Name	Address
	<u>Mary Kelly</u> (B.J. Haner) 53 New Shaker Rd Albany NY	1218 4th Ave W Hendersonville, N.C. 28739
	<u>Eug. Johnson</u>	DeBary Fla 13 Hibiscus Dr 32713
	<u>Ruth Johnson</u>	Safford Az. 108E 3rd St 85546
	<u>Harold Soule</u> <u>Madeline</u>	Concord, N.H. Rfd 8 Box 375 03301
	<u>Chester Witters</u>	Belmont Vt. Box 48 05730
	<u>Wm/Mary Jones</u>	Georgetown, Del 419 W. Market St 19947
	<u>Marion O'Connell</u> (Marie Sevier)	2027 Allan Pl N.W Washington DC 20009
821	<u>Rebecca Soule</u>	476 Midvale Ave L.A. Calif. 90024
821	<u>Opal Manly</u> 200 South Av 56 L.A. Calif 90042	
	<u>Shirley Maxwell</u> Roland	Lachute, Que RR 2 5H8 3R8
	<u>G & J Schlosser</u> Chris	801 E Browell Tomah, WI. 54660
	<u>John & Peggy Turner</u>	8629N Deerwood Dr Deer WI. 5773 Oakland Ter Apt E Indianapolis, 46220
	<u>Guy & S Soule</u> (Suzette)	2134 E 7th St Charlotte NC 28204
	<u>James I Soule</u>	1314 Marquette 1703, Minneapolis MN 55403
	<u>Harold Nielsen</u> <u>Eloise</u>	2318 n Gale Ave Peoria, IL 61604
	<u>Stanley Soule</u> <u>Carol</u>	Bedford, Que Box 1223 JOJ 1A0
	<u>Randy Soule</u> <u>Monica</u>	Bedford, Que Box 1334 JOJ 1A0
	<u>Herbert Soule</u> <u>Mildred Soule</u>	San Antonio Tx. 2911 Wacos Dr. 78238 14 W 29th St New York NY 10001
	<u>Anthony Berver</u> <u>Yvonne</u>	AZ.



STANLEY S. SOULE

Our Host and Hostess



CAROL SOULE
(Mrs. Stanley S.)

REGISTERED BUT NOT STAYING AT RAMADA

<u>Elaine Clow</u>	St. Ignace de Stanbridge Que. JOJ 1Y0
<u>Thelma Gage</u> <u>Gordon</u>	Bedford, Que JOJ 1A0
<u>Eleanor Irwin</u>	56 Cedar Apt 5 Granby, Que J2C 4L3
<u>Kenneth Baker</u> <u>onic</u>	Bedford, Que, JOJ 1A0
<u>Elizabeth Baker</u>	Bedford, Que, JOJ 1A0
<u>Bruce Baker</u>	Stanbridge East, Que JOJ 2H0
<u>Thomas Baker</u> <u>Fran</u>	159 Prince Arthur St. Lambert, Que J4R 1E4
<u>Norman Soule</u> <u>Florence</u>	9011 S.E. 88th ST Ocala, Fla 32672

MONTREAL REUNION MEMORIES

Bonjour from Montreal!

What a wonderful time was had by all in Montreal. The festivities started on Thursday night with a stroll to a nearby pedestrian mall offering a wide variety of restaurants with outside seating. The menu options included many different ethnic groups (Greek, Italian, Thai, French) so everyone dined at whatever restaurant had their favorite choice. All restaurants are required by law to post a menu outside so you always know the selections and price before entering. Of course the menu may only be in French!

Friday was left open to explore the city on our own or perhaps explore our roots. Gerry Sowle Schlosser was available for questions in the morning. She had also brought along the Soule Kindred microfilms and a reader as well as various other research aids. If searching for lost Soules wasn't what you had in mind, Montreal offered many other diversions. Some people went shopping along Rue St Catherine or in the Underground City. Others taking walking tours of Old Montreal, or a carriage ride (caleche) through downtown. A few travelled farther afield to the site of the 1976 Olympics or the site of Expo '67.

Friday evening, we took a cruise of the Montreal harbor, learning of Montreal today and yesterday. The commentary was given in both French and English. This is truly a bilingual city with English as a second language. Afterwards we strolled through the lively streets of Old Montreal and enjoyed a delightful late night dinner in a charming restaurant.

Saturday started with the obligatory board meeting for many of the members. While we convened to ensure the continuity of our organization, others continued with their shopping or other explorations of Montreal. After lunch, we participated in a bus tour of the city. This included a tour of Notre-Dame Basilica (pronounced bass-e-li'-ca), Old Montreal, downtown Montreal with its many banks and other financial institutions, Palais des Congres' (Convention Center), Olympic Park, St Joseph's Oratory, and Mt. Royal Park. As the bus dropped us off at our hotel, the raindrops started to fall. Up til then the weather had been great. This was good timing since the next activity was indoors - the Banquet. About forty people attended. The speaker was Thomas Baker (a Soule descendant) giving a lively thought-provoking talk. We reviewed the highpoints of our Board meeting held earlier that day with the major news being the acceptance of Annapolis Maryland as the location for our reunion in August 1991.

Continued on next page ...

(continued from previous page...)

Sunday, we joined together for a church service followed by breakfast at our hotel. At this point, many of the Kindred started to head for home. For those who remained, a trek to nearby Quebec City was arranged for Monday to continue our explorations of our neighbors to the north.

I am sure that all who attended would heartily agree that our first Canadian reunion was loads of fun and a great big MERCI BEAUCOUP to Stan, Carol, Randy and Monica Soule for their tremendous efforts in making it so successful. We look forward to returning again sometime.



Opal Soule Manley, Calif., (her 22nd reunion!)



On a cruise down (up?) the St. Lawrence

MILESTONES

College student earns scholarship

Florida
AVON PARK — Tamara A. Wolcott, daughter of Mr. and Mrs. Alvin Wolcott of Avon Park, has been selected to receive the Col. John Edward Soule Memorial Scholarship of \$500.

She attends Southern College of Seventh Day Adventists in Collegedale, Tenn. Students are selected on the basis of direct lineage of George Soule, leadership, personal goals and letters of reference from teachers or religious counselors.

George Soule was ~~one of the Pilgrims~~ one of the Pilgrims who landed on Plymouth Rock in 1620.

*Tamara's great-great
 mother was Rebecca
 Jane Soule, 8th
 generation from
 George Soule of
 the Mayflower.*

SATURDAY, JUNE 16, 1990

Genet C. Soule will be ordained into the ministry of the United Church of Christ at 7:30 p.m. Sunday in St. Luke's United Church of Christ, 5360 West 16th Street. A reception will follow. Soule will leave Indianapolis June 23 for a one-year stint as guest pastor at Melancthon-Kirche, Bochum, West Germany.

(Above from the INDIANAPOLIS STAR. Genet is the daughter of John Soule, Indianapolis.)

James H. Sowle

James Henry Sowle, an Army veteran who volunteered time helping homeless veterans, died June 10, 1990, at the Alaska Native Medical Center. He was 50.

Mr. Sowle was born April 14, 1940, in Cordova. He graduated from Sitka High School in 1957, then served two years in Vietnam as an Army helicopter mechanic and crew chief. He received a Marksman as well as Armed Forces Expeditionary medals.

Mr. Sowle leaves a son, James Jr. and daughter, Tammy Marie Sowle, both of Shelton, Wash.; his mother, Rae R. Sowle of Wrangell; a sister, Betty Nore of Wrangell; and three brothers, Lawrence Sowle of Keyport, Wash., and Patrick Sowle, Sr., and Robert G. Sowle, II, both of Anchorage.

FROM The "Anchorage Times" Anchorage, Alaska
 June 12, 1990

ATTENTION SENIORS!

Look for Soule Scholarship information in the next issue of the Soule Kindred Newsletter.

Vol. 1, No. 3

November 16, 1990

THE CHRONICLES

Of the Historian of the Minnesota Mayflower Society

Candidates for Election

JAMES CALVIN SIMMONS
 910 Brooklawn Dr. #14, Brookings, SD 57006
 11th from GEORGE SOULE
 Prop. by Calvin Simmons, sec. by D. Woods

BEVERLY JEAN (COOK) WYLIE
 580 Miller, Hutchinson, MN 55350
 10th from GEORGE SOULE
 Prop. by Richard Pullen, sec. by J. Tornstrom

THOMAS JOSEPH SIMMONS
 216 - 7th Ave., Brookings, SD 57006
 11th from GEORGE SOULE
 Prop. by Calvin Simmons, sec. by D. Woods

They were elected into Membership in the Gen. Soc., Nov 16th 1990 - ed.

Second graders get a taste of Pilgrim's life

Kasson Elementary second graders got a real taste of what it was like to eat what the Pilgrims had for a typical Thanksgiving feast. Also, they had an opportunity to hear about the pilgrim's from one of their decedents, Flora Brown.

Brown, a ninth generation descendent of the pilgrim's was accompanied by her great-grandson, a 12th generaton descendent. David Packer, also a second grader, helped his great-grandmother familiarize the students with the life of the pilgrim and how they established a colony at Plymouth Rock.

Brown said she has made two trips to Plymouth Rock to explore and find out more about her family background. "When you consider that I am a ninth generation of the pilgrim's and there is three generations separating me from David, it doesn't seem like that long ago," she said.

In addition to hearing about the history of the pilgrim's second graders had an opportunity to sample some of the food they would have had back then. Above, Flora, with assistance from great grandson David Packer, shows students some of the pilgrim's history.



Flora Brown, Kasson, Minn., 9th from George SOULE.

Prairie School was a pathway to history

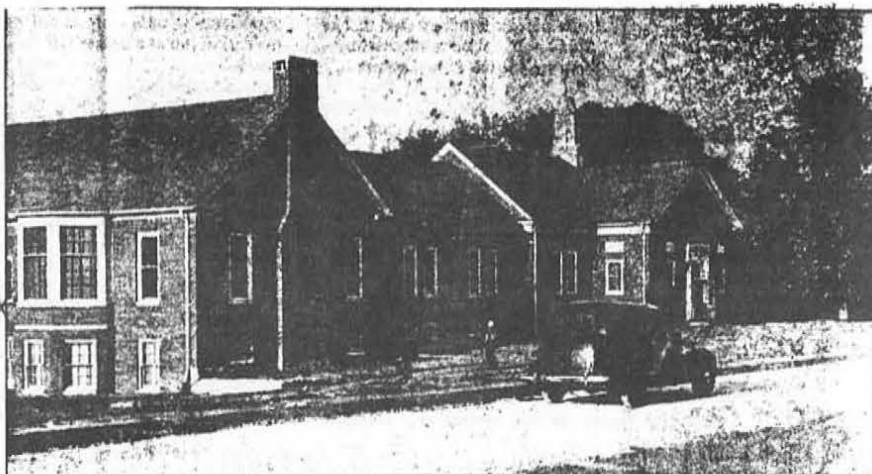
Building that burned was begun in 1936.

Prairie School, which was extensively damaged in a four-alarm fire Saturday night, was one of the cornerstones of Prairie Village and Northeast Johnson County.

The original Prairie School, established in the mid-1860s, was one of a multitude of rural schools that sprang up after Kansas was admitted to the Union in 1861, according to a history of the school written by Lou Sondern and published in *The Kansas City Times* in 1974.

Its original 2-acre site at 63rd Street and Mission Road was part of the land owned by the Rev. Thomas Johnson, founder of the Shawnee Methodist Mission and Manual Labor School for Indian youth. His son, Alexander Soule Johnson, who inherited the property, deeded the small plot to the school district.

In 1882 the school needed a new structure. Accordingly, an acre at the present site was purchased for \$50 from Johnson County cattleman Henry Coppock, who was also a member of the school board. The school also



The photo shows the Prairie School as it appeared in 1939, virtually completed after three years of construction at a cost of \$200,000. A fire heavily damaged the building Saturday.

from Mrs. Jerome Parenteau, Overland Park, KS

THE KANSAS CITY STAR Sun. July 29, 1990

Prairie School was a pathway to history

Continued

counted Thompson Alexander B. Lewis, grandson of Meriwether Lewis, among the early members of the school board.

Built by a carpenter, Samuel Miles Standish, the new school was a spacious white frame edifice, austere in appearance with small, narrow windows, and heated by a large red stove in the center. Furnished with desks and a blackboard, the school boasted such essential equipment as ink, a water pail and a dipper, and a bundle of switches.

By 1912, the growing population of the area had made a larger school necessary. The old one was torn down, and a new white frame building erected for \$2,000. Besides the main room, there were cloakrooms, a front porch, a coal bin and a basement play space. The raised platform supporting the teacher's desk served as a stage for various community entertainments, especially the Friday night spelldowns and the efforts of the debating society.

The school was also the host to

meetings of the Anti-Horse Thief League, a 1912 version of a neighborhood association, and also was the scene of the annual oyster supper.

Audley W. Porter, whose grandfather, Thomas C. Porter, was one of the original settlers of Johnson County in 1858, pointed out that the school had been built facing north in order to help students learn to read their maps.

Audley Porter, a student from 1906 to 1914, recalled the building as the typical one-room schoolhouse which once dotted rural America but has now all but disappeared.

"It was a rural school with a dirt road leading up to it. It didn't have electricity or running water, but it was a happy country school," Porter, now 89, recalled Saturday night. About 30 children attended the school with him.

Porter said he couldn't begin to describe the loss of the school.

"There were a lot of memories burned up in that school," he said.

Vince Magers of the Metropolitan staff contributed to this article.

THE MASSACHUSETTS SOCIETY



Assistants.

Governor Augustus W. Soule, Jr. wrote a most interesting sketch about his childhood during the summers at the beaches and in the marshes around Duxbury. He tells of one story told by his father about the canal built by the Pilgrims between Wessagusset and Massachusetts Bay to avoid the more turbulent waters around the Gurnet. Mr. Soule asked for other stories or verification of the canal story.

From Geraldine S. Schlosser, Tomah, WI

Ted's Lineage: Theodore Scott¹¹ Roeder, Helen¹⁰ Soule, Claude R.⁹, Harvey M.⁸, Hiram A.⁷, Wesson⁶, James⁵, Wesson⁴, Nathaniel³ Soule, Nathaniel², George¹

Professor ends career with program development

Ted Roeder is winding up a 22-year teaching career at the University of Wisconsin-Stevens Point this month by laying the groundwork for a new program that will address the problem of toxins in water.

Roeder has worked in recent years toward the establishment of the College of Natural Resources' new offering in aquatic toxicology, and he predicts it will have "a major impact on this state in providing necessary training to new professionals."

He said his role in advancing this new program is his foremost contribution as a faculty member "because all of us must become more familiar with the problems of toxins in water."

Roeder's legacy to his profession

also includes an organization he helped establish—the North American Diatom Symposium, which brings together water pollution specialists for programs about their profession.

A native of Tomah and veteran of three years of Navy duty during World War II, Roeder entered the work force after completing a degree in biology and English at Lawrence University in Appleton. He later earned master's and doctoral degrees from Montana State University in Bozeman.

In the early years of his career, he served the U.S. Park Service as a supervisor of rangers in North Carolina and Alaska. That time was sandwiched between short stints as a horse wrangler on a dude ranch in Wyom-

ing. He returned to Alaska in 1966 for a two-year stay as a staff member for what today is the U.S. Environmental Protection Agency.

To remain mindful of life in Alaska, Roeder has become one of the state's most active breeders and trainers of Alaskan husky sled dogs. During winter months, he and his wife, Betsie Graham, participate in about eight races either in Wisconsin, Minnesota or Michigan. But the hobby keeps them busy throughout the year on their 40-acre farm near Bevent. They have about 50 dogs.

In retirement, the professor plans to do some part-time teaching at UW-SP and make another return trip to Alaska. He and his wife will do more backpacking, canoeing and hiking.



Ted Roeder

Stevens Point Journal 5/23/90

The Compae
Neil B. Todd, Editor
101 Newbury S
Boston, MA 02111

SOULE KINDRED NEWSLETTER TOPIC INDEX

Vol. 16 - 20 1982-1986

Some items are indexed by name & topic. Some are repeated if need more explanation. Selection obviously is subjective. Topics selected usually covered at least most of a page, unless the material appeared to be important in tracing a Soule lineage. This means brief items in such features as MILESTONES normally are not included. Routine features such as President's messages, index and membership lists are not included.

SK Topic Index

Page 1

SUBJECT	EXPLANATION	VOL.	PAGE
Ayers Family of NJ -	Dutch Reform Ch.-Wantage Sussex Co 1779-1803	16	4
Banzhaf, Elizabeth -	also "Buffy" - honored for volunteer effort	18	15
Brown, Ellener -	Possible wives of William West--Rev. War	18	68-9
Brown-Freeman -	Update Book 3--Timothy Brown Desire Freeman	16	5
Camp Soule FL -	Boy Scout camp may be sold to buy new site	16	29
Camp Soule FL -	Boy Scout camp named for Mrs. Mortimer Soule	18	88
Camp Soule FL -	Plan to sell Boy Scout camp defeated	18	71
Camp Soule FL -	Proposal to sell Boy Scout Camp for Park	18	18
Camp Soule FL -	Parents angry over continued sale talk	19	107
Cheney Cemetery PA -	Cheney & Soule records - Enterprise, PA	17	114-5
Crismore, Mary -	Bio. Long-time member - various offices	18	58-9
Cup Plates-Soule -	Memento of 1984 Reunion--special casting	18	132
Cushman-Downer Family -	Joseph Downer family from VT Vital Records	18	90
Cushman-Downer Family -	More on Asenath Cushman & Joseph Downer	18	48-9
Devol, Jonathon Jr -	Chronology of life Navy Capt. 1756?-1824	17	111-2
Duxbury MA -	First Church invites Founders desc.-350 anniv	16	95
Duxbury MA -	Genealogical Registers in History Duxbury	16	6-11
Duxbury MA -	Map - Mention George-1	16	1
Duxbury MA -	Lands owned by George-1 and desc. (w/map)	20	117-8
Eckles-Soules IA -	Family records Eckles and Soules(Sowles) Iowa	20	69-71
England Trip -	Question if interested in 1985 trip	17	133
England Trip -	Plans being made for trip in 1986	18	158
England Trip -	List those interested by state--seek companions	19	98-100
England Trip -	English newspaper articles on 1986 trip	20	106
England Trip -	Report on trip in 1986 by 20 Kindred folks	20	81-95
Fitch, Nancy Scott -	Soule desc. - cares for foster children	20	148-50
Five Gen. Project -	Also see "Volume 3"	0	0
Five Gen. Project -	Corrections to Vol. 3 by Mayflower Society	16	141
Five Gen. Project -	Historian reviews evidence dau Patience Soule	17	8-10
Five Gen. Project -	Historian reviews Francis Walker Records	17	48-9
Five Gen. Project -	See "Volume 3 -" -- especially after 1981	17	
Freeman, Isabelle -	Receives Honorary Life Mbr Kindred w/pix	17	136-7
Freeman, Isabelle -	Voted life membership in Kindred	17	124
Freeman-Brown -	Update Book 3--Timothy Brown Desire Freeman	16	5
Gaylor, Ann -	Opposes "Year of the Bible" (Sowle desc.)	17	87
Go West Young Man -	Credit John Soule -- not Twain or Greeley	17	151
Hallum, Margery R. -	Article Aspen paper traces ancestry-George-1	16	70
Haner, Avis -	Bio - Membership Secretary	16	143
Haner, Betty-Jean -	Bio. treas Soule Kindred many years	16	58
Haskell, Mary -	Historian reviews evidence dau Patience Soule	17	8-10
Heinerikson-Soule -	Lineage of family	16	74-5
Heiress & Soule Elope -	Emma Whitman Knopp marries Claron Soule	16	62
Heritage poem -	By Susannah Grubb - winner DAR contest	17	81
Howland, Samuel -	More info on Samuel and Esther (dau Polly)	18	5
Howland, Samuel-5 -	Copy of will shows additional children	18	86-7

SK Topic Index

Page 2

SUBJECT	EXPLANATION	VOL.	PAGE
Hyannis, MA -	Historic bldgs-1st Inn-also T.H.Soule bldg	17	157
In Search Of George-1 -	Nils Wilkes Book on research on ancestry	20	85
Index Soule Records -	Historian has completed draft for checking	17	133
Kelley, Mary Soule -	Board Member - other offices - Kindred	18	100
Knopp, Emma Whitman -	Heiress marries Claron Soule	16	62
Lezotte-Soule/Sowle -	Lineage from George-1 - with documentation	16	76-9
Llama Farmer -	James Stankey raises them at Terre Haute IN	16	109
Maine Gravestones -	Part 1-Inscriptions Soule name - various cems.	18	143-52
Maine Gravestones -	Part 2 - Inscriptions Soule name var. cems.	19	11-20
Maine Gravestones -	Part 3 - Inscriptions Soule name var. cems.	19	52-60
Maine Gravestones -	Part 4 - Inscriptions Soule name var. Cems.	19	113-19
Maine Soules -	Index-names in Vital Records to 1914 (Part I)	16	156-9
Maine Soules -	Index-names in Vital Records to 1914(Part II)	17	18-20
Manley, Opal Soule -	Bio. Member Kindred Board Directors	17	24
Mayflower Barn -	More on fate of ship (Amer. Legion Article)	17	140
Mayflower Compact -	Compact and signers	17	160
Mayflower Fam. Vol. 3 -	See Five Gen. Project and/or Volume 3	0	0
Mayflower Ship -	Eventual fate-part of barn(Am. Legion article)	17	140
McShea, Charlotte C. -	Lineage 5 lines back to George-1 & Mary	18	27
Middleboro, MA Cem.-	Soule names in "Cemetery at the Green"	20	151-5
Nicol, Scott -	Dentist battles University Computer error	18	112
Ohio Soules (Almond-6)-	Buried Meigs Co, OH 1859-brief info on desc.	16	154
Page, Gladys -	86 yr old on trip England-Chanute, KS article	20	108
Parker, F T (Col) -	Obit - friend Col. John- active in SK	16	26
Pearce, Daniel -	Bio. Kindred Board member -	17	23
Pilgrim Burial Marker -	Monument marks first buying ground Plymouth	18	1
Pilgrim Origins -	Map England shows where many came from	16	121
Plymouth Burying Ground-	Monument marks first buying ground Plymouth	18	1
Porter, Nathan -	2nd husb Susannah-5 West--childr his 1st wife	18	89
Powder Point Land -	Map & brief mention George-1	16	1
Pratt, Fred A. -	Lineage to George-1 & Pratt line	20	156-7
Preston, John Soule -	Recognition for work at school - Cincinnati	19	109
Preston, Linda Soule -	Bio. board directors-later President Kindred	16	59
Relationship Chart -	From child to 3rd cousin once removed	17	80
Reunion 1981 -	Pictures of people & activities	16	20-1
Reunion 1982 -	Business matters to come up & General info	16	81-5,91-3
Reunion 1982 -	Plans - activities and issues	16	43-5,54-6
Reunion 1982 -	Report on business and social activities	16	124-36
Reunion 1983 -	Article from Los Alamos Monitor	17	155
Reunion 1983 -	Events planned for Santa Fe	17	1-7
Reunion 1983 -	More on Santa Fe - Reunion plans	17	44-7
Reunion 1983 -	Pictures etc of Santa Fe Reunion	17	115-9
Reunion 1983 -	Secretary & Treas. reports - pictures etc	17	125-32
Reunion 1984 -	Activities - Secretary & Treasurer reports	18	125-30
Reunion 1984 -	Cup plate cast as a memento of reunion	18	132
Reunion 1984 -	Plans - etc	18	45
Reunion 1984 -	Plymouth Scenes	18	98-9
Reunion 1984 -	Schedule events - costs - etc	18	85
Reunion 1985 -	Dates set and early plans	19	4
Reunion 1985 -	Plans and Arrangements completed	19	44-6
Reunion 1986 -	General info, costs, etc	20	41,45-8
Reunion 1986 -	Plans - costs - etc - in Minneapolis	20	96-7
Reunion 1986 -	Secretary & Treasurer reports- pix - etc	20	125-131
Schlosser, Christine -	Bio. membership Secretary of Kindred	20	16

SUBJECT	EXPLANATION	VOL.	PAGE
Schlosser, Geraldine -	Bio. Newsletter Editor - (nee Sowle-10)	16	102
Shaker Community -	Story & interview with Eldress Gertrude Soule	17	134-5
Sled Dogs -	Ted Roeder breeds dogs in Wisconsin	17	55
Smith-Soule -	Florence-8 & Henry Porter Smith descendants	20	110
Soles-Andalusia, AL -	Three generations - builders	19	81,96-8
Soule Ancestral Index -	Historian has completed draft for checking	17	133
Soule Bowl -	Stadium Named for Dr. A.E. Soule-E.Moline, IL	17	113
Soule Canal in Kansas -	Newspaper story on Canal of late 1800's	17	14-15
Soule College-Kansas -	Reference to college in Soule Canal story	17	14
Soule Family Assn. -	Reunion desc. James & Patience 1983-Tomah	18	28
Soule Family Assn. -	3rd reunion-Sowle Family Assn(Came WI 1855)	20	158
Soule Glass Co. -	Ad Company ME and some info on lineage	16	108-9
Soule Names IL -	Soule Names in Soundex Code 1880 Census IL	18	114-6
Soule Names SD -	Soule Names Soundex Code 1900 Census So. Dak.	18	116-7
Soule Signatures -	Identity of Soule Signatures Vol 3 End page	16	152-3
Soule' College-LA -	College in New Orleans-Property for Sale	17	158
Soule' College-LA -	Pres Business school New Orleans obit	17	96
Soule' Steel Co. -	Calif. Co. plans to go out of business.	20	66
Soule, Andrew -	Donates 125+ trophies to Special Olympics	16	23
Soule, Ben George -	Bio - Vice President (later president)	16	137
Soule, Charles -	Portrait painter - Dayton OH	16	103-7
Soule, Claron -	Marries heiress Emma Whitman Knopp	16	62
Soule, Clayton -	Honored by Oklahoma Camera Club	17	53
Soule, Clayton -	Wins Gulf States Camera Club honors-age 88	19	136
Soule, Clyde -	60th wed anniversary - Guelph, Ontario, Can.	16	151
Soule, Clyde -	Observes 90th Birthday - Guelph, Can.	18	56-7
Soule, Francis G. MD -	Obit - retired physician U.S. Navy	20	57
Soule, George (atty) -	Partner Minneapolis law firm spec. liability	20	66-7
Soule, George -	Obit-Pres Soule College(Bus school)New Orleans	17	96
Soule, George Standish -	Co-Founder of Soule Kindred (with Col John)	17	67-8
Soule, George-1 -	Harris- England area George & Winslow lived	16	48-53
Soule, George-1 -	Where from?? (See IN SEARCH OF GEORGE SOULE)	16	96-100
Soule, George-1 -	Harris-What like for boy in England that era	17	90-2
Soule, George-1 -	Harris-More on England in George-1 days	18	103-5
Soule, George-1 -	Harris-what must have been like for trip	18	63-7
Soule, George-1 -	London in his times	18	137-40
Soule, George-1 -	Tribute by Betty Whitecotten read at Marker	18	121
Soule, George-1 -	Harris - London in his times	19	23-5
Soule, George-1 -	Harris-More on what Atlantic trip like etc	19	103-6
Soule, George-1 -	Reprint of early article by Col John -1960's	19	131-5
Soule, George-1 -	In Search of George Soule -Wilkes research	20	85
Soule, George-1 -	Lands owned in Duxbury George & desc.	20	117-8
Soule, George-1 -	Possible burial - by Isabelle Freeman	20	113-5
Soule, Gertrude -	Story & Interview Eldress of Shaker Community	17	134-5
Soule, H.A. Notes VT -	Notes left by Horace Allen Soule-Randolph VT	17	104-5
Soule, J A (Elder) -	Baptize Grandson at FL retirement Center	16	30
Soule, James I.	Bio. 2nd vice pres Kindred - later President	19	138
Soule, John (Duxbury) -	Many names descendants John Soule of Duxbury	16	12-19
Soule, John Babson -	Said "Go West Young Man" - not Twain/Greeley	17	151
Soule, Leander-7 -	Picture at Logan Intl Airport in Boston	16	71
Soule, Melvina-Diary -	1876 trip Wisconsin to East - part I	17	143-51
Soule, Melvina-Diary -	Part II - Philadelpa to VT and home	18	6-13
Soule, Moses-5/Bildad -	Lineage from Moses, Bildad, William	16	86-90
Soule, Ronald J. -	Bio. Board Member (other offices) Kindred	20	17

SUBJECT	EXPLANATION	VOL.	PAGE
Soule, Samuel W. -	Held responsible for "QWERTY" keyboard	18	113
Soule, Sullivan-7 -	Marriage record corrected	18	49
Soule, William -	Loyalist-parents unknown (1 theory disproved)	19	47
Soule, William -	Obit civic leader & contractor Pensacola, Florida	19	130
Soule, William-4 -	Reprint article 2 Williams -- Vol.III #3	20	132-9
Soule-Cheney -	Picture Peter Jacob S & Eliza Ann C--Erie PA	17	114
Soule-Duxbury -	George-1 & Desc. - in History Duxbury-NAMES	16	6-9
Soule/Sowle-LaZotte -	Lineage from George-1 - with documentation	16	76-9
Soules in Who's Who -	Several named in famous book of famous people	17	69-70
Soules North Carolina -	Bladen, Brunswick & Columbus Counties NC	16	73
Soules, Fred -	Bio-Newsletter Publisher (held other offices)	16	101
Southworth-Duxbury -	Correction of some info from Jan Newsletter	16	86
Southworth-Duxbury -	Southworth names - History Duxbury MA	16	9-11
Southworth-Soule Line -	Southworth traced back to 8th Century England	18	95-7
Sowl Darlington, WI -	A few Sowl (Sowls) names Union Grove Cem.WI	20	10
Sowl, Edward -	2nd wife & children & Bapt.Ch. Scituate 1774	19	47
Sowl, Henry T. Bible -	Central City NE-Entries range 175-? to 1931	16	46
Sowl, Henry T. Bible -	Correction of some info from Jan Newsletter	16	86
Sowl-Nebraska -	Desc. G-1--NE in 6th gen., multiple families	19	143-57
Sowle Family Assn. -	Some desc. Hiram (WI) meet in Colorado	16	27
Sowle Family Assn. -	Desc. James & Patience Sowle-Tomah WI Reunion	18	28
Sowle, Claude R -	Dean Miami Law School	16	69
Sowle, Claude R. -	Desc. Reunion in Colorado-various names	16	27
Sowle, Joseph-5 -	Historian--add son Joseph & a daughter	17	85-6
Sowles, Hiram-IN -	Reunion descendants at Auburn, IN	18	28
Sowles, William-5 -	Children & Anna include John	18	5
Sowls-Wisconsin -	Traced to George-1	19	70
Teke, Ron & Tania -	Wife appreciation day proposed in Colorado	16	61
Terry, Dr. Milton -	Bio. Kindred Historian - co-author Vol 3	17	103
Thompson, Neil -	Reply on on Walker dispute Vol 3	17	106-8
Threadgold-Sowl Cem.WI-	Sowl names family Cem. - Lafayette Co WI	20	10
Tiffin, Kenneth -	Obit long-time attorney for Kindred	18	47
Turner, Margaret Soule -	Bio. Kindred board of directors	19	140
Typewriter -	Samuel W. Soule blamed for "QWERTY" keyboard	18	113
Uhlig, Bernardine J. -	Bio. Secretary of Kindred	20	59
Volume 3 -	Corrections to Vol. 3 by Mayflower Society	16	141
Volume 3 -	Add son & daughter Joseph Sowle (p206#471)	17	85-6
Volume 3 -	Ann Borden Harding replies criticism book	17	50
Volume 3 -	Historian Dr. Terry--more on Haskell-Walker	17	51-2
Volume 3 -	Historian reviews evidence dau Patience Soule	17	8-10
Volume 3 -	Historian reviews Francis Walker Records	17	48-9
Volume 3 -	Neil Thompson on Walker dispute	17	106-8
Volume 3 -	Reply by Mary Crismore to criticism of book	17	63-5
Volume 3 -	Add John to Children William-5 & Anna Sowles	18	5
Volume 3 -	John Wright correct - more detail coming	18	5
Volume 3 -	More info on Samuel & Esther Howland	18	5
Volume 3 -	More on Asenath Cushman & Joseph Downer	18	48-9
Volume 3 -	Samuel Howland will shows more children	18	86-7
Volume 3 -	Susannah-5 West children w/2nd Husand	18	88
Walker, Francis -	Historian reviews Francis Walker Records	17	48-9
Walker-Haskell -	Historian Dr. Terry--more on Haskell-Walker	17	51-2
West, Susannah-5 -	Children of second husb.- Nathan Porter	18	88
Whitecotten, Betty -	Bio - Board member	16	144
Whitecotten, Glen -	Bio - President Kindred	16	57

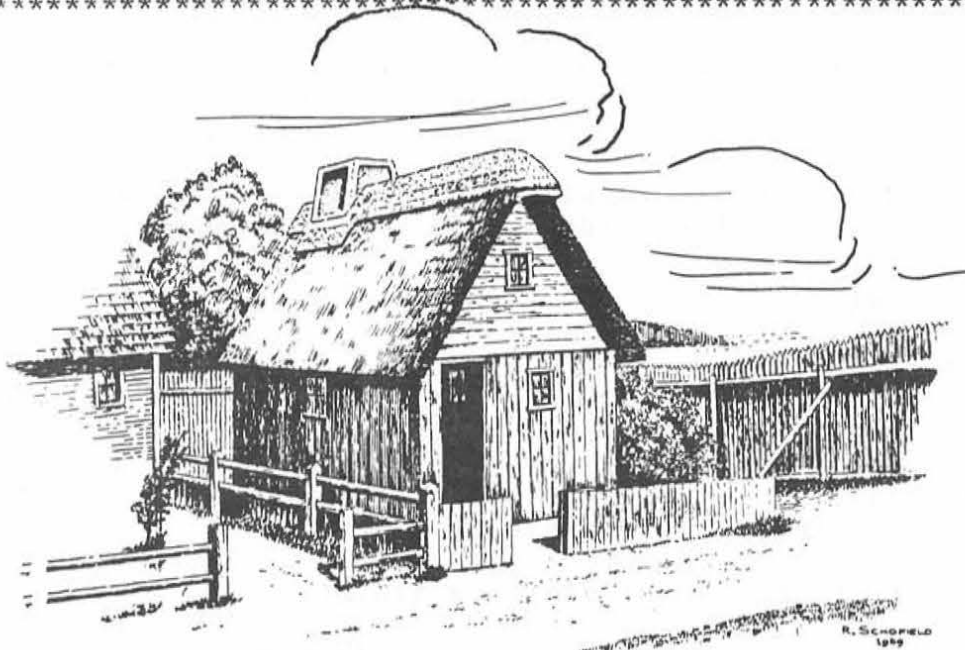
SUBJECT	EXPLANATION	VOL.	PAGE
WI - Sowle Family -	Reunion desc. James & Patience 1983-Tomah	18	28
WI Sowle Reunion-	3rd reunion-Sowle Family Assn(Came WI 1855)	20	158
Wilhelm Family Records-	Many names descendants John Soule of Duxbury	16	12-19
Wilhelm, Dorothea -	Bio. Kindred Board Member	18	20
Wilkes, Nils -	Research ancestry George-1--Kindred book	20	85
Worcestershire -	Map of area of England	17	93
Wright, John -	Correct Vol 3 - error NEHGR -more coming	18	5

End of SOULE KINDRED NEWSLETTER

Topical Index Vol.16 - 20

1982 - 1986

James Schlosser, Indexer



'' Soule House at Plimoth Plantation, Plymouth, Mass. ''
 We have a supply of SOULE house note paper.

Packs of 10 folders w/ envelopes may be ordered from:

Betty Jean Haner, Treasurer
 53 New Shaker Road
 Albany, New York 12205

ALPHABETIC SPOUSE LISTING FOR SOULE KINDRED INDEX

An index of spouse names has been completed from the original Soule Kindred Index created by the late Dr. Milton Terry in 1986. He listed more than 7,000 individuals with the name Soule, including the source of information and a number system for tracing lineage. He also listed the names of the spouse of about 5,000 of the individuals.

The spouse names have now been indexed, with all listed in alphabetic order, along with the name and code number of the individual in the original Terry index. However, you must have that original Terry index to use the Spouse listing. Many Soule Kindred members do have that one put out by Dr. Terry four years ago.

If you do not have the original index, copies can be made. The \$10.00 cost for each of the indexes includes shipping.

. SPOUSE INDEX

To: Jim Schlosser
801 E. Brownell St.
Tomah, WI 56440

Please send:

Spouse Index ____ copies @ \$10.00 _____

Terry Index ____ copies @ \$10.00 _____

[MAKE CHECKS PAYABLE TO SOULE KINDRED IN AMERICA]

Name: _____

Address: _____

City: _____ ST _____ Zip _____

NEW MEMBERS

If you have not received a New Member Packet containing letter, by-laws, family data sheets, and membership card please notify:

Soule Kindred

**BETTY-JEAN HANER, TREAS.
53 NEW SHAKER RD.
ALBANY, NY 12205**

ORDER FORM

SOULE KINDRED NEWSLETTER

\$2.50 per issue; \$10.00 per year

Make checks payable to Soule Kindred in America, Inc. and send to 53 New Shaker Rd., Albany, NY 12205.

I enclose \$ _____ for _____ copies of back issues as checked.

1967-V.1 #1()	#3() #4()	1979-V.13 #1()	#2() #3() #4()
1968-V.2 #1() #2()	#3()	1980-V.14 #1()	#2() #3() #4()
1969-V.3 #1() #2()	#3() #4()	1981-V.15 #1()	#2() #3() #4()
1970-V.4	#3()	1982-V.16 #1()	#2() #3() #4()
1971-V.5 #1() #2()	#3() #4()	1983-V.17 #1()	#2() #3() #4()
1972-V.6	#2() #3() #4()	1984-V.18 #1()	#2() #3() #4()
1973-V.7 #1() #2()	#3() #4()	1985-V.19 #1()	#2() #3() #4()
1974-V.8 #1() #2()	#3() #4()	1986-V.20 #1()	#2() #3() #4()
1975-V.9 #1() #2()	#3() #4()	1987-V.21 #1()	#2() #3() #4()
1976-V.10 #1() #2()	#3() #4()	1988-V.22 #1()	#2() #3() #4()
1977-V.11 #1() #2()	#3() #4()	1989-V.23 #1()	#2() #3() #4()
1978-V.12 #1() #2()	#3() #4()	1990-V.24 #1()	#2() #3()

NAME _____

STREET ADDRESS _____

CITY _____ STATE _____ ZIP _____

Annapolis Historic Area

REUNION 1991
ANNAPOLIS, MARYLAND
AUGUST 15 - 18

- A - State House
- B - Old Treasury
- C - Governor's Mansion
- D - St. Anne's Church
- E - Court House
- F - Banneker-Douglass Museum
- G - Senate Office Bldg.
- H - House Office Bldg.
- I - Legislative Services Bldg.
- J - State Archives
- K - Tobacco Prise House
- L - Chase-Lloyd House
- M - Hammond-Harwood House
- N - Peggy Stewart House
- O - Paca House
- P - Paca Gardens
- Q - Brice House
- R - Market House
- S - Visitor Information
- T - U.S.N.A Visitor Center
- U - Naval Museum
- V - U.S.N.A Chapel
- W - Bancroft Hall Dormitory
- X - Maritime Museum
- Y - Carroll Mansion



SOULE KINDRED IN AMERICA, INC.
53 NEW SHAKER ROAD
ALBANY, NEW YORK 12205

ADDRESS CORRECTION REQUESTED
RETURN POSTAGE GUARANTEED

BULK RATE
U.S. Postage
PAID
PERMIT # 044
Hopkins, MN 55343

Charles J. Sowles
P.O. Box 329
St. Francisville, IL 62460