

# SOULE NEWSLETTER

Library of Congress No. C 371, S 717, Volume XX, No. 3, July, 1986. Page 81  
Published by Soule Kindred, Inc., P.O. Box 1146, Duxbury, Massachusetts 02331



Eckington Church  
25 May 1985

**TRINITY CHURCH**  
**Eckington, Worcester, England**



The SOULE KINDRED NEWSLETTER is published quarterly (January, April, July, and October) by Soule Kindred in America, Inc. Dues are \$10.00 per year; subscriptions will begin with the first issue of the current year. Late subscribers will be sent back issues for the current year. Subscriptions with checks made payable to Soule Kindred should be sent to the Treasurer at 53 New Shaker Rd., Albany, NY 12205.

## c Soule Kindred 1986

P. O. Box 1146  
Duxbury, MA 02331

ISSN #0584-164X

Life Membership . . . \$100.00  
Patron Membership . . . 50.00  
Sustaining Membership . . . 25.00  
Regular Membership . . . 10.00

IRS Tax Number 23 7253936

#####

### SOULE KINDRED OFFICERS

#### PRESIDENT

Linda Soule Preston, 2340  
Grandview Avenue, Cincinnati  
OH 45206 513-869-6056

#### FIRST VICE PRESIDENT

George S. Soule, 5125 Woodbine  
Avenue, Philadelphia, PA 19131  
215-473-4188

#### SECOND VICE PRESIDENT

James I. Soule, 4033 Dublin Dr.,  
Minnetonka, MN 55345 612-933-4965

#### TREASURER

Betty-Jean Haner, 53 New Shaker  
Road, Albany, NY 12205 518-869-8368

#### SECRETARY TO THE BOARD

Mrs. Walter H. Uhlig, 48 Harbor  
Lane, Loveladies, NJ 08008

#### HISTORIAN

Dr. Milton Terry, 381 Creek  
Bed Rd., Mountainside, NJ  
07092 201-232-2614

#### MEMBERSHIP SECRETARY

Christine A. Schlosser,  
W65 N705 St. John Avenue,  
Cedarburg, WI 53012 414-377-1075

#### NEWSLETTER EDITOR & PUBLISHER

Geraldine Sowle Schlosser  
(Mrs. James), Route 3, Box 53,  
Tomah, WI 54660 608-372-7018

#### NEWSLETTER INDEXER

Mrs. Frank (Mary) Crismore,  
3139 W. 51st St., Indianapolis, IN  
46208 317-293-6561

#### COUNSELLOR

James B. Tiffin, Tiffin &  
Tiffin, 125 High St., Rm. 1117,  
Boston, MA 02110 617-482-1230

### BOARD OF DIRECTORS

#### Class of 1986

Opal Soule Manly, 200 South  
Avenue 56, Los Angeles, CA  
90042 213-256-4585

Betty Whitecotten, 2306  
Woodland Blvd. Villas, Ft.  
Myers, FL 33907 813-936-8291

W. Fred Soules, P.O. Box  
250, Lorena, TX 76655  
817-857-4570

#### Class of 1987

Dan Pearce, 31 Oakwood Road,  
Box 1518, Duxbury, MA 02331  
617-934-6647

Mrs. Thomas (Marian)  
O'Connell, 2027 Allen Place,  
NW., Washington, D.C. 20009

Dorothea M. Wilhelm, 5 Garden  
St., Beverly, MA 01915  
617-922-6253

#### Class of 1988

Ben George Soule, 7405 Queen  
Avenue South, Minneapolis, MN  
55423 612-869-6056

Ronald J. Soule, 1110 S.  
Jefferson Ave., Covington, LA  
70433

Margaret Soule Turner, 4486  
Barnor Dr., Indianapolis, IN  
46226

#### PERMANENT OFFICE

Sabina D. Crosby, P.O. Box  
1146, Duxbury, MA 02331  
617-934-6106

TABLE OF CONTENTS

Officers- - - - - 82  
 President's Corner- - - - - 84  
 Nils Wilkes' Research - - - - - 85  
 Upham Family- - - - - 85  
 Soule Kindred in England by Chris Schlosser - - - - - 86  
 1986 Minneapolis Reunion- - - - - 96  
 Recording Family Data - - - - - 98  
 Milestones- - - - - 103  
 Kindred News- - - - - 106  
 Questions and Answers - - - - - 109  
 Lineages- - - - - 110  
 Vale of Evesham Historical Society- - - - - 112  
 Harden Hill by Isabelle V. Freeman- - - - - 113  
 From the Past by Alberta Soule- - - - - 116  
 New Members - - - - - 119  
 Sowl Reunion- - - - - 119  
 Newsletter Order Form - - - - - 119

Cover: This is a sketch by Valerie Warren, our English tour guide. It is not signed because she considered it incomplete. Each of us on the tour received a copy.

\*\*\*\*\*

**FROM YOUR EDITOR**



*Soule Kindred has gone to England! From 19-year-old John Preston to 86-year-old Gladys Page, the twenty of us enjoyed our pilgrimage. This issue of the Newsletter gives us an opportunity to share our experiences with all of you. The photographs illustrating Chris' "diary" were supplied by Chris & Jim Schlosser, Mildred Soule, and Mrs. Wilkes (Nils' mother).*

*For some of us this was a once-in-a-lifetime trip; others are already planning to return. I would like to thank Jim Bolles and Family Society Tours for the wonderful organization of the tour. Jim made the special contacts in Evesham and Eckington that made that visit the real highlight. We wish that more of you could have joined us and we hope you enjoy reading about it.*

## President's Corner...

We were hardy souls, Pilgrims of sorts ourselves --- the nineteen of us who met in London on May 20th, undaunted by terrorists or the devalued dollar. Great was our reward!

The unique itinerary, first inspired by Newsletter Editor and Publisher Geraldine Soule Schlosser and later organized by Jim Bolles and Company of Family Society Tours, combined the best of a traditional English tour with places of special interest to Soule Kindred. We were also blessed with an excellent guide, Valerie Warren, whose artistic eye and great personal charm enhanced every step of the way.

The highlight of all was our visit to the town of Eckington. There we received a very warm reception from the townsfolk that included a special church service and tree-planting in the churchyard, followed by a lovely luncheon with toasts all around. This culminated more than a year and a half of effort on the part of a very special person indeed. Nils Wilkes had undertaken on his own to research every possible avenue concerning our Pilgrim Ancestor George as well as records of any Soules living in the area or even elsewhere in England at that time. This great endeavor was inspired both by his love of local history and a letter of inquiry turned over to him by the local records clerk. The fruits of this labor were compiled in a documented research of more than fifty pages, complete with maps and schemes.

How thrilled my dad would have been to see the fulfillment of a dream --- finding a person in Eckington both willing and qualified to undertake such a thorough and precise research. Never having known one another, their similarities are striking --- both civil engineers with a penchant for detail, a great love of history and a zest both for life and people!



*Linda Soule Preston*

Linda Soule Preston  
Bergamo, Italy  
June 1986

**AFTER THE "TREE PLANTING"**  
- Host & Researcher Nils  
Wilkes, Soule Kindred  
President Linda Soule  
Preston, Son John Soule  
Preston and  
Vice-President George  
Standish Soule.

NILS WILKES' RESEARCH

Those of us on the tour in England were fortunate to be able to purchase In Search of GEORGE SOULE of the Mayflower by Nils Wilkes of Eckington, England. Although not a Soule descendant, Nils was intrigued by the long-held view that George Soule came from the vicinity of Eckington, and he began a study that would take up much of his life for several years. In his book he lists documents relating to the Soule Family at Hereford & Worcester Record Office, the Public Records Office, and parishes in Eckington and bordering villages, Evesham area, early Worcestershire, and others. Admitting that nothing definitive has been found relating to George's birth, he does present his conclusions from the evidence discovered to date.

Soule Kindred can indeed be grateful to Nils Wilkes for undertaking this study. Much of his spare time during the past four years has been spent in record offices and poring over parish registers. Most important, he will continue to search for that elusive evidence that will prove where George Soule came from.

Mr. Wilkes has given Soule Kindred the right to reproduce his book in this country for sale to interested persons. This project will be discussed at our annual meeting in August. In order to determine the number of copies to be printed, we'd like an indication of the interest. If you want to purchase a book, price probably around \$10.00 for soft-cover, please write to the editor, Geraldine Sowle Schlosser, Route 3, Box 53, Tomah, WI 54660. Do NOT send money; this is only a survey to find out interest.

+ + + + +

UPHAM FAMILY

The Upham Family Society travelled to England with our group. Since the Uphams were early residents in Massachusetts (1635) it is quite possible there was intermarriage with Soule descendants. If you have an UPHAM in your ancestry, we encourage you to contact their society.



HOME OF PHINEAS UPHAM AND HIS WIFE, TAMZEN (HILL) UPHAM

Phineas, called Phineas the third, was born in June, 1682.

Lineal descendants of John Upham and their spouses are invited to become members of the Upham Family Society.

He was the son of Deacon Phineas, grandson of Lieutenant Phineas and greatgrandson of John Upham who came to Weymouth with the Hull Company in 1635.

The third Saturday in June is usually the Society's annual meeting at the old house.

Phineas and Tamzen were one of the first families to settle in North Malden, later called Melrose.

The original house was small with a huge chimney which can still be seen today. The house was later enlarged and now has a second story and unfinished attic. Inside the house are pictures, books, artifacts and furniture of the 1700's and the Upham family.

The flag and flagpole outside the building are in memory of James Bailey Upham who is considered to be the true author of the Pledge of Allegiance to the American flag.

**PHINEAS UPHAM HOUSE  
1703**

255 Upham Street  
Melrose, MA 02176

Open to the Public by Appointment Only

Call 617-665-1298

Owned by the  
UPHAM FAMILY SOCIETY, INC.

(Mrs R) Beatrice Walland  
11 Lynde St  
Melrose  
MA 02176

## SOULE KINDRED IN ENGLAND

By Chris Schlosser

5/20

As befits any tour of England, ours started in the rain. We arrived at the airport in a fog. Of course our minds were slightly foggy after seven hours on a plane anyway. They told me it was 7:00 AM and time to get going but it sure felt like 1:00 AM and time for bed. Our first stop was the hotel and a few hours of rest followed by a tour of Windsor Castle. We did not get to see the Queen's private quarters but toured much of the castle including the large banquet room where President and Mrs. Reagan dined while visiting England. Eton College was lost in the fog and closed to the public due to exams. In the evening we saw a slide show by Jim Bolles, tour organizer, about surnames and how they originated. Up to now we had been with three other family groups--Botsfield, Goodale, and Upham. We had the largest contingent with twenty people.

5/21

Today each family group goes its separate ways--ours is to London. Our tour guide is Valerie. She not only points out the interesting sights but also checks us into our hotel rooms, reminds us where to be and at what time and helps out in a crisis (lost luggage, for instance). There is so much to see in London--Big Ben, Houses of Parliament, Westminster Abbey, Picadilly Circus, Trafalgar Square, Buckingham Palace, various museums, churches, statues, and even a few teenage punkers. We toured St Paul's Cathedral where Charles and Diana were married. Due to continuing raindrops, we didn't see the changing of the guard at Buckingham, but we did spend much of the afternoon at the Tower of London. There are actually more than 20 towers. It is so amazing to think this was started over 900 years ago. We also viewed the Crown Jewels which are kept here. We had the evening free as well as the following day. Some in the group took in an evening performance at one of the many theatres in London.

5/22

This was a free day spent in various pursuits like shopping, touring museums, riding the tube, exploring different parts of London or taking a closer look at sights already seen. We actually saw the sun today too.



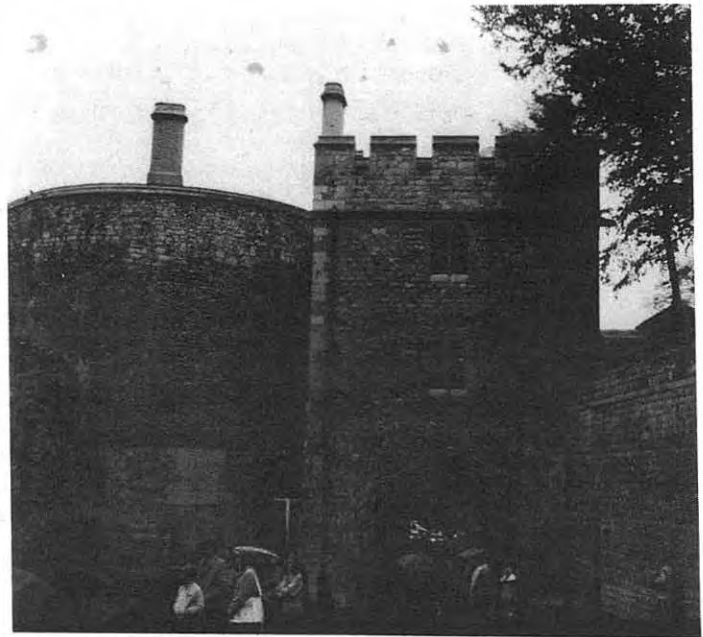
Windsor Castle in the rain-- approaching Norman Gateway



Family groups meeting together to hear Jim Bolles



Houses of Parliament & Big Ben



Bloody Tower at Tower of London - Original Roman wall at left

5/23

Now we head out of London into the picturesque English countryside. We have a luxurious coach with reclining seats, tables, frig, sink, loo, microwave and TV lounge. We were also supplied with an incredible driver named Chris. He amazed us each day with the way he could maneuver that 40 foot bus. Our first stop was Oxford and tea with the Lord Mayor, his wife and their son. We toured the town hall and viewed their fine collection of silver plate, chalices, cases, and maces. Afterwards we had time to tour the town on our own and look over the various colleges. We continued on to Stratford passing Blenheim Palace, birthplace of Winston Churchill, along the way. Our first stop in Stratford was Anne Hathaway's Cottage which is much more than that in my estimation. The house is wonderful but the true beauty is the garden. We have found this true wherever we are from huge palaces to small gardens in front yards of row houses. After the cottage, we moved on to Shakespeare's Birthplace. The timbered house was both the home and workplace of Shakespeare's father. More Americans than Britons visited this monument last year. The gardens here contain every plant mentioned in his plays and only those plants. That evening it was on to the Royal Shakespeare Theatre and the play "The Winters Tale".

5/24

Today we begin to delve into the Soule part of our trip. Our first stop is at the Almonry Museum in Evesham. This provided us with a general history of the area. A nearby church (All Saints) had a reference to a Soule. This is also where we joined forces with Mr. Nils Wilkes. Here is a guy who was interested in local history. Four years ago a Soule wrote requesting information from the local church. The letter passed to him and he has spent those four years trying to find information about George Soule. We still don't have proof of George's early years but Mr. Wilkes has eliminated some possibilities. We had a lovely lunch with the mayor and deputy mayor of Evesham accompanied by their wives. Then we continued our scenic tour of the Cotswold. This is an area of rolling hills with beautiful hedgerows, sheep and cows dotting the landscape. The towns are numerous, growing up around the church which is usually 700 to 900 years old. Thatched roofs and timbered houses surround the church giving way to more modern buildings which try to fit into the older mold on the outskirts of town. In Worcester, we took a boat ride on the Severn River and were able to watch a rowing regatta. They probably were not as thrilled to have us drifting through their race course but it was fun none-the-less. After dinner, Mr. Wilkes talked about his research and showed slides of the area.





Council Chambers, Oxford with the Lord Mayor's Sergeant



Tea with the Lord Mayor of Oxford. Florence Soule', Linda Preston, Stacie Soule, Gloria Soule, Lord Mayor's Wife, Jim Schlosser



Nils Wilkes



Getting briefed by Nils in Evesham



Grounds of Almonry Museum, Evesham

5/25

Today was a highlight among highlights beginning with a memorial service at the church in Eckington (possible home of George Soule) and ending with tea and biscuits in a beautiful home which once housed Edward Winslow. The church service was similar to those of 1600 Church of England. Linda Preston, George Soule, and Nils Wilkes participated by reading various parts of the Scripture. Afterwards we had an hour of fellowship with the congregation. Next we gathered in the churchyard to plant a cherry poplar tree leaving a small remembrance of our trip to the country from which George Soule came. By now it was lunchtime and we shared a beautiful buffet with the townspeople. After a delicious meal we drove about the countryside through nearby small towns, stopped at a few churches and generally got a feel for the area. Our final stop was at the home of Edward Winslow. We had a delightful tea with the current owners, Mr & Mrs P.G. Rimell. The house and gardens are stupendous. The trip was worth it for this one day alone--all the rest is just a bonus.

5/26

Today is a bank holiday. The crowds are out in force and we are thankful many Americans have chosen not to travel in England. We can't imagine what it would be like if more were here. Our first stop is Bath and a tour of the Roman Baths. The water looked inviting until I learned the baths were lead lined. After our tour we had time for lunch and a little exploration on our own. We took a scenic route to Wells through Cheddar Gorge. The drive through the gorge was beautiful and the tourist traps reminded me of American commercialization. Our visit to the Wells Cathedral was brief but we had the added treat of hearing the City of Birmingham orchestra practicing for an evening performance.

5/27

We now travel through Dartmoor National Park on our way to Plymouth. The moors are a bleak country of sheep, cattle, wild ponies, the ancient clapper bridges and Dartmoor Prison. Once arriving in Plymouth, we first toured the area on bus and then the waterfront area by foot. Plymouth was heavily bombed during World War II so today the town is a mix of old and new buildings. Our walk included a wonderful view of the ocean from a beautiful park with memorials to Sir Francis Drake, various wars and the National Armada. We also saw the Mayflower Memorial in the harbor as well as the list of Mayflower passengers posted outside the Island House. After our group tour we had all afternoon to explore. Many took a boat tour of the harbor; others visited some of the historic sites on land and all had a look at the shops.



Social hour at Trinity Church, Eckington



Tree planting by 4 youngest members of tour: Chris, Cindy, John, Stacie



Statue of Sir Francis Drake, Plymouth Hoe (Very windy day!)



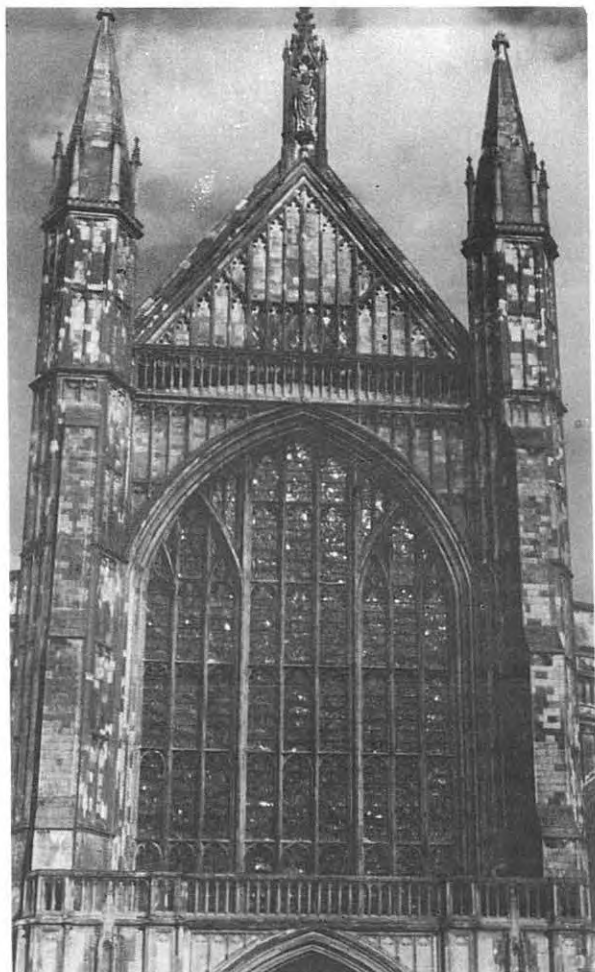
Mayflower Stone on pier with Plymouth Guide Robert Lloyd-Cooke

5/28

Lyme Regis is a cozy little seacoast town. Here we were given a walking tour by the Town Crier in his resplendent traditional costume. We were interrupted at one point by a drenching downpour which prompted us to seek shelter in a nearby pub and a glass of hard apple cider. This is the town where "French Lieutenant's Woman" was filmed. We also had a peek at a timber of the Mayflower which had been saved by a member of the Tucker family and used as the newel post for the stairwell of the Tudor House Hotel in Lyme Regis. Our next stop was a trip back to prehistoric times and Stonehenge. It is awesome to stand at this site of massive stones and realize this was done 3000 years ago. Some of these stones came from faraway Wales. It is truly amazing. Now you are not allowed within 50 yards of the site but you can still appreciate the workmanship and artistry of Stonehenge. Our final stop was Winchester. Valerie took some of us on a short tour of the cathedral area prior to our dinner.

5/29

This morning we visit Winchester Cathedral. I know I must be sounding like a broken record with all this talk of awesome buildings but it is humbling to stand in this immense cathedral dating from 1079. Intricately carved statues are everywhere. It also contains mortuary chests of several kings and other notables. Next we walked to the Great Hall of Winchester which is all that remains of the castle. This is where King Arthur's Round Table can be viewed. There is currently a display about the Domesday Book. This was the first census ever conducted in England. It was ordered by William the Conqueror in 1086 to provide him with exact details of his newly conquered kingdom. The book still exists and is on display in London. Winchester was William's headquarters which is why they also have a display commemorating the 900th anniversary of the book. It was then time to return to London. We had the afternoon free to check out a museum, the changing of the guard, Westminster Abbey, shop, or try to figure out how everything is going to fit in your suitcase. Our final evening together was spent at an Elizabethan banquet. We were served by buxom wenches and entertained by two court jesters. Throughout our seven course meal we were serenaded by ladies and gentlemen of the court. To show our appreciation we would pound our fists upon the table. This was a fun conclusion to a wonderful trip.



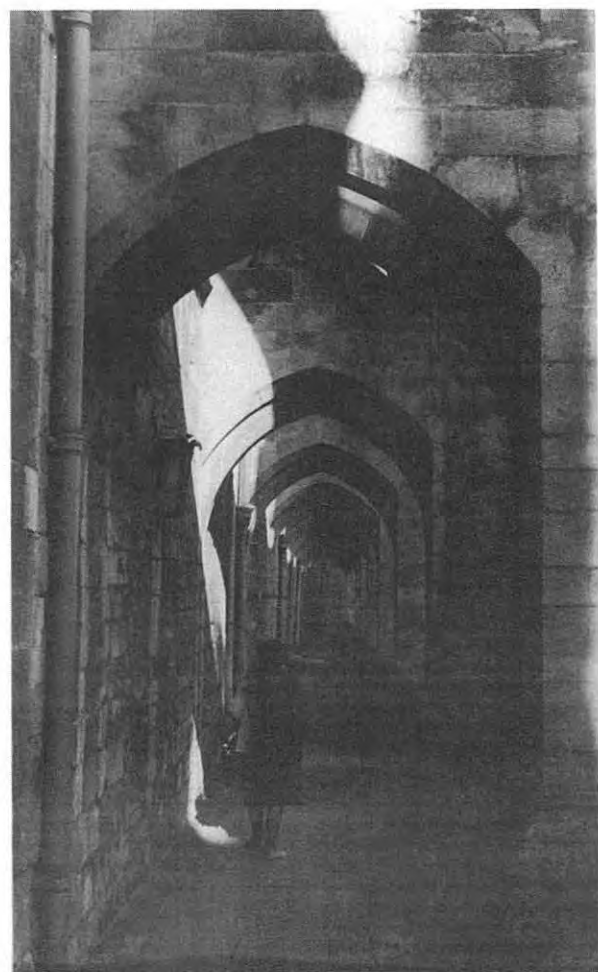
Winchester Cathedral



Town Crier Richard Fox with Cindy, George, Gladys, Peggy & the Cushmans



Stonehenge



Mildred at Winchester

5/30

Today our tour is ending and the group will go its separate ways. Some will be returning home; others will be taking off for France, Italy or Wales but we all will carry these memories with us for years to come. These include much more than can be written in this brief diary. I haven't even talked about food (the delicious sweets we had with our evening meals, delightful pub lunches, white tea and coffee, raw sugar, Yorkshire pudding, full English breakfasts) or accommodations (heated towel racks, tea/coffee makers in every room, double flush toilets) or even the hazards of crossing a street. I hope you can all have the opportunity to visit this homeland but if not we are willing to share our experiences with you.

## TOUR PARTICIPANTS

Howard & Mary Cushman  
 Marie Freidline  
 Gladys Page  
 Linda Preston  
 John Preston  
 Chris Schlosser  
 Jim & Gerry Schlosser  
 Cindy Soule  
 George Soule  
 Gloria Soule  
 Herbert Soule  
 Mildred Soule  
 Norman & Florence Soule'  
 Stacie Soule  
 John & Peggy Turner  
 Dorothea Wilhelm

Winter Haven, Florida  
 Clearwater, Kansas  
 Chanute, Kansas (86 years young)  
 Cincinnati, Ohio  
 Cincinnati, Ohio (19 years old)  
 Milwaukee, Wisconsin  
 Tomah, Wisconsin  
 San Antonio, Texas  
 Philadelphia, Pennsylvania  
 Delaware, Ohio  
 San Antonio, Texas  
 New York, New York  
 Ocala, Florida  
 Warren, Ohio  
 Indianapolis, Indiana  
 Beverly, Massachusetts



SOULE KINDRED GROUP AT REAR OF WINSLOW HOME, KEMPSEY

Front, left to right: Stacie Soule, Norman Soule', Florence Soule', John Preston, Linda Preston, John Turner, Peggy Turner (kneeling), Chris Schlosser, Dorothea Wilhelm, Mildred Soule, Gladys Page, Marie Freidline, Gerry Schlosser, Herb Soule, Mary Cushman, Valerie Warren (guide), Cindy Soule. Back: Jim Schlosser, George Soule, Chris Dietrich (bus driver), Howard Cushman. Not pictured: Gloria Soule



Norman Soule' gets attention from "Queen Elizabeth I"



Gladys Page & Florence Soule' join in a song



Our "coach". Driver Chris Dietrich helps Dorothea Wilhelm.



Final Banquet at Hatfield House

1986

REUNION MINNEAPOLIS

1986

AUGUST 7 - 8 - 9

REUNION HEADQUARTERS: The Normandy Inn, 403 South Eighth Street  
 Minneapolis, Minnesota 55404  
 (612) 370-1400 Reserve toll free 800-372-3131

AGENDA: August 7 THURSDAY

Afternoon: Arrivals, Registrations, Greetings  
 For those of you who will arrive before 2:30 p.m.  
Special event for We have arranged a DAY AT THE RACES, CANTERBURY  
early arrivals DOWNS, Thorobred racing and supper at the track.  
 Transportation to the track will be provided.  
 You will be back to the INN by 10:00 p.m.

August 8 FRIDAY

8:00 a.m. Breakfast at the Normandy Inn, On your own.  
 9:00 a.m. Tour Bus loading: American Swedish Institute,  
 Minneapolis Institute of Arts.  
 NOON Lunch: THE STUDIO CAFETERIA at the Institute.  
 Lunch cost on your own.  
 1:15 BACHMANS Florist Greenhouses: Home of the  
 EUROPEAN FLOWER MARTS - Large greenhouses.  
 3:00 BYERLY'S "The Bloomingdales of the Supermarket  
 industry" WSJ. 93000 sq. ft. of things for the  
 good life.  
 4:30 Return to the INN via City of Lakes  
 5:45 Tour Bus to LAKE MINNETONKA  
 6:30 Cocktails and Dinner MAI TAI on the lake  
 8:00 Boat Cruise on Lake Minnetonka, 2 hours  
 refreshments on board  
 Tour Bus returns to the INN

August 9 SATURDAY

Morning On your own. See Downtown Minneapolis, all  
 shopping and poking around within walking  
 distance. Nicollet Mall, and 24 city blocks  
 connected by skyways.  
 12:00 Lunch - Marquette Inn, IDS CRYSTAL COURT  
 4:00 Board Meeting - Normandy Inn  
 6:30 Banquet Reception - NORMANDY INN  
 7:30 Annual GRAND BANQUET - NORMANDY INN

August 10 SUNDAY

Assistance to those departing.  
 8:30 CHURCH SERVICE: Westminster Presbyterian Church  
 (within walking distance to the INN.)  
 10:30 Brunch together for those who remain at the  
 NORMANDY INN



## REUNION MINNEAPOLIS

AUGUST 7th 8th 9th 1986

Jim Soule reports in late June that Kindred from 12 states, from Maine to California, had registered for the 1986 reunion. It is not too late to be included. The program, from the early arrival event at Canterbury Downs to the Banquet, which will include slides and a report of the Soule Tour to England, is varied and interesting. You will also have plenty of free time to explore Minneapolis on your own. Do fill out the form below and join your cousins in August.

RESERVATION FORM: Clip and Mail to: James I. Soule  
4033 Dublin Drive  
Minnetonka, Minnesota 55345

Name(s): \_\_\_\_\_

Address: \_\_\_\_\_

Event - Friday - August 8th

- |                                     |                                 |          |
|-------------------------------------|---------------------------------|----------|
| 1. Registration                     | \$7.50 per family (due July 15) | \$ _____ |
| 2. Bus (Fri Tours)                  | \$10.00 per person              | \$ _____ |
| 3. Lunch (Fri) The Studio Cafeteria | (price on your own)             | _____    |
| 4. Dinner (Fri) Mai-Tai on the Lake | \$12.00 each                    | \$ _____ |
| 5. Cruiser Minnetonka 2 hr. cruise  | \$10.00 each                    | \$ _____ |

Saturday - August 9th

- |                                      |                    |              |
|--------------------------------------|--------------------|--------------|
| 6. Lunch (Sat) Marquette Inn         | \$9.50 each        | \$ _____     |
| 7. Banquet Reception _____ # Persons |                    | Hosted _____ |
| 8. Annual Grand Banquet              | \$15.50 per person | \$ _____     |

ALL GRATUITIES ARE INCLUDED

Total \$57.50 per person, plus \$7.50 family registration

Total Enclosed: \$ \_\_\_\_\_

\*\* Thursday Early Arrival Event  
at Canterbury Downs  
(\$3.50 ticket - pay at gate)  
transportation free

Yes \_\_\_\_\_ No \_\_\_\_\_

REUNION HEADQUARTERS - Normandy Inn

Call for your own reservations and indicate (important) that you are with SOULE KINDRED OF AMERICA for group rates:

\$49.50 single, \$55.50 double  
In Minnesota 800-362-3131  
Outside Minnesota 800-372-3131

PLEASE MAKE YOUR CHECK PAYABLE TO:

JAMES SOULE SPEC. ACCT.

## RECORDING OF FAMILY DATA

Soule Kindred needs information, especially on families since 1800. We'd like to suggest that you begin with your 6th generation ancestor from George Soule (or your earliest Soule ancestor, if you haven't made the connection to George-1). Fill out a form for that ancestor, and then submit forms for each of your ancestors down to yourself. This is especially important if you descend through a female line; Soule women who marry tend to become lost Soules.

In the last issue we explained how to fill out the form, with an example of a male SOWLE ancestor. In this issue we show a completed form (pages 101 and 102) for a female descendant with a surname other than SOULE. Let's take a look at how it's done.

(1) The "Generation" space in the upper left corner shows the generation from your immigrant ancestor. Please leave it blank unless you are certain. (I put in "11" because the line is established.)

(2) In the far upper space on the right for "FAMILY", leave it blank if the surname of "Soule Descendant" is SOULE, SOWLE, or variants. If the "Soule Descendant" has a different surname, insert the name in the right upper space. (In this case it is POTEKHEN.)\*

(3) The next two lines show the ancestors of the "Soule Descendant" back to George Soule-1. Unless you have an approved Mayflower Lineage or other positive proof, we suggest this be left blank. (I filled this line in, because it is an approved Mayflower Lineage.)

(4) When writing dates, follow the genealogical style-- first the day in numbers, then the month in letters, and the full year.

(5) When listing children on the reverse side, put in as much information as you can.

(6) List your name and address as compiler unless someone else gathers the information. We may need to contact the compiler.

(7) It is VERY important to list sources of data; if the information comes from a family Bible or other record, a photocopy of the information should be included.

(8) Leave "Verification" blank for our purposes.

(9) Please give as many clues as possible to facilitate further research. If you are uncertain about a date, enter it, but add "circa" or "ca".

Send completed form to our Historian:

Dr. Milton Terry  
381 Creek Bed Road  
Mountainside, NJ 07092

\*Tania Potekhen Teke gave permission to your editor to use her chart.

Soule Kindred

Generation \_\_\_\_\_

Family \_\_\_\_\_

Soule Descendant \_\_\_\_\_

Ancestral Line \_\_\_\_\_  
( \_\_\_\_\_ )

Parentage

son/dau of \_\_\_\_\_ and \_\_\_\_\_ ( \_\_\_\_\_ )

Birth or baptism

was b. \_\_\_\_\_ at \_\_\_\_\_

Death

died \_\_\_\_\_ at \_\_\_\_\_

Burial

buried at \_\_\_\_\_ Cemetery

Residences and removals

Resided \_\_\_\_\_

Occupation \_\_\_\_\_

Military service \_\_\_\_\_

Other biographical data \_\_\_\_\_  
\_\_\_\_\_  
\_\_\_\_\_  
\_\_\_\_\_

He/She married \_\_\_\_\_

on \_\_\_\_\_ at \_\_\_\_\_

Parentage

son/dau of \_\_\_\_\_ and \_\_\_\_\_ ( \_\_\_\_\_ )

Birth or Baptism

He/She was b \_\_\_\_\_ at \_\_\_\_\_

Death

and died \_\_\_\_\_ at \_\_\_\_\_

Burial

buried at \_\_\_\_\_ Cemetery

Biographical \_\_\_\_\_  
\_\_\_\_\_  
\_\_\_\_\_

Other marriages \_\_\_\_\_  
\_\_\_\_\_  
\_\_\_\_\_



Soule Kindred

11th Generation

POTEKHEN

Family

Soule Descendant

TATIANA JEAN POTEKHEN

Ancestral Line

( Tatiana Jean Potekhen<sup>11</sup>, Nancy Edna Sowle<sup>10</sup>, Claude<sup>9</sup>, Harvey<sup>8</sup>, Hiram<sup>7</sup>, Wesson<sup>6</sup>, James<sup>5</sup>, Wesson<sup>4</sup>, Nathaniel Soule<sup>3</sup>, Nathaniel<sup>2</sup>, George<sup>1</sup> )

Parentage

son/dau of George Paul and Nancy Edna ( Sowle ) Potekhen

Birth or baptism

was b 10 June 1949 at Plainfield, Union Co., NJ

Death

died living 1986 at

Burial

buried at \_\_\_\_\_ Cemetery

Residences and removals

Resided Plainfield, NJ, Cincinnati, OH, Corning, NY, Silverthorne, CO

Occupation

Travel Agent

Military service

Other biographical data

Graduate Ohio University, Athens, OH 1971; Moved to Colorado to do post-graduate work at Colorado State University in Fort Collins; moved to Silverthorne, CO 1975. Tania & Ron owned a restaurant-bakery in Dillon, CO, contractin business in Silverthorne, and after spending three months in Mexico with their family in 1985, they opened a travel agency - "Teke Tours"

He/She married RONALD LOUIS TEKE

on 11 September 1971 at Athens, Athens Co., OH

Parentage

son/dau of Ralph Harold and Mary Elizabeth (Rodenburg ) Teke

Birth or Baptism

He/She was b 6 March 1950 at Cincinnati, Hamilton Co., OH

Death

and died living 1986 at

Burial

buried at \_\_\_\_\_ Cemetery

Biographical

Occupation: Building contractor; travel agent & guide

See above

Other marriages

No other marriages for either of the above

Names in full, date and place of birth, marriage, death, and to whom married

Children of Ronald Louis and Tatiana Jean (Potekhen) Teke

(1) Jennifer Elizabeth b. 28 October 1978 Denver, CO

(2) Christopher Louis b. 1 Feb 1980 Denver, CO

This record was compiled by Geraldine Sowle Schlosser

of Route 3, Box 53, Tomah, WI 54660 Date 2 July 1986

Sources of data Marriage, birth announcements; interview (phone) with Tania (Tatiana) Potekhen Teke, Silverthorne, CO, 2 July 1986

Verified by

# MILESTONES

From Louise Soule Hickey, Box 3172, Gillette, WY 82716

Announcing the birth of my first great-grandchild: Alysia Lynn Kisgen born Oct. 25, 1985, daughter of Mike and Dayleena Kisgen of Gillette, WY. Dayleena Powrie Kisgen is the daughter of Carol Hickey Powrie. Lineage: 1. George Soule-Mary Beckett 2. John Soule-Esther Nash Sampson 3. Josiah Soule-Lydia Delano 4. Micah Soule-Mercy Southworth 5. Asa Soule-Olive Southworth 6. Almond Soule-Mary (Polly) Kimball 7. Sardine S. Soule-Sarah Chambers 8. Albert M. Soule-Isadoria Striker 9. Earl A. Soule-Josephine Wagoner 10. Louise M. Soule-Tom Jack Hickey 11. Carol L. Hickey-Charles Powrie 12. Dayleena Powrie-Mike Kisgen 13. Alysia Lynn Kisgen

From Geraldine Schlosser  
Tomah, WI

**THE TOMAH JOURNAL**  
**THURSDAY, MAY 8, 1986**

### BIRTH ANNOUNCEMENT

Mr. and Mrs. Tenno Sowle (nee Denise Skailand), 1523 Hollister Ave., Tomah, are proud to announce the birth of their daughter, Tara Ann, born May 5, 1986 at Tomah Memorial Hospital weighing 7 lbs. 2 oz. and was 20" long.

She has a brother Ty Allen to welcome her home.

Proud grandparents are Art and Bev Sowle and Ken and Nancy Skailand, all of Tomah.

Lineage: George-1, Nathaniel-2, Nathaniel-3, Wesson Sowle-4, James-5, Wesson-6, Hiram-7, Harvey-8, Kyle-9, Art-10, Tenno-11, Tara Ann-12.

From George S. Soule  
Philadelphia, PA

**THE BOSTON GLOBE**  
**TUESDAY, APRIL 8, 1986 39**

**SOULE**—Of Salem, N.H., Attorney Lewis F. of 48 Zion Hill Rd. Monday, April 7 at his home after a long illness. Son of the late Dr. Lewis F. Soule and Jessie Bleakney, husband of Virginia (Wood). Father of Lewis F. Soule Jr., Dianna Selfert, Deborah Espinoia, Joellen Soule and Beth Soule. Brother of Dr. Herbert Soule. Also survived by 6 grandchildren and several nieces and nephews. Funeral Services will be held Thursday, April 10 at 1 pm. at the Robert Douglas Goundrey Funeral Home, 42 Main St. SALEM, N.H. Burial in Pine Grove Cemetery, Salem, N.H. Relatives and friends may call Tuesday, 7-9, Wednesday 2-4 and 7-9 at the Funeral Home. Memorial contributions may be made to the Dollars for Scholars, c/o Mrs. Reid, Salem High School, Geronimty, Dr. Salem, N.H. 03079 or to St. David's Episcopal Church, 231 Main st. Salem, N.H. 03079

Lewis Soule was a long-time member of Soule Kindred. He obtained the Massachusetts Charter for our organization.

From Asa C. Soule, Sr., 3 Rehoboth Bay Mobile Home Community, Rehoboth Beach, DE 19971

John Robert Soule, son of Mr. Joseph E. Soule of Erie, PA, and Nannett Marie Sherman, daughter of Mr. and Mrs. Donald R. Sherman, also of Erie, were married at Trinity Lutheran Church on Saturday, May 24, 1986. John is our nephew.

From Alberta S. Soule, 116 Oak St., Middleboro MA 02346



Mr. & Mrs. Marc H. Lang

William C. Pearson of Winooski, VT as well as the bride's three brothers, Mr. Charles E. Soule Jr. of Winooski, VT, Mr. Jonathan E. Soule of Fairport, NY, and Mr. Peter B. Soule of Oneonta, NY. Dr. Paul F. Ippolito of Chester, VT sang a solo during the ceremony.

After a trip to Barbados, the couple is residing in S. Burlington, VT.

Miss Kimberly A. Soule became the bride of Mr. Marc H. Lang on Oct. 19, 1985, during a candlelight ceremony at the Congregational Church in Westboro, MA. A reception followed at the Worcester Horticultural Society.

The bride is the daughter of Mr. and Mrs. Charles E. Soule of Westboro, MA. She is the granddaughter of Alberta N. Soule and the late Albert F. Soule of Oak Street and Mr. & Mrs. Frederick Eayrs of School Street, all of Middleboro, MA. The bridegroom is the son of Mr. & Mrs. James R. Lang of Dover, NH.

The bridal party included the maid of honor, Mrs. Ann-Britt Christie of Westboro, and the best man, Mr. James P. Lang of Dover, NH, the bridegroom's brother. The bridesmaids were Mrs. Pamela S. Soule of Fairport, NY, the bride's sister-in-law, Miss Lori K. Davis of Burlington, VT, Miss Janice L. Apol of Cambridge, Mass., and Miss Linda S. Herrick of Portland, ME. The flower girl was Miss Cara T. Ippolito of Chester, VT. The ushers included Mr.



Saturday, March 30, 1985

VT

# Longtime State Sen. Soule Dies

By MIKE DONOGHUE  
Free Press Staff Writer

Former state Sen. Richard C. Soule of Fairfax, hailed as the "father of education reform in the state of Vermont," died Friday evening of cancer. He was 68.

"I see no useful purpose in the Senate having to watch me deteriorate," the Burlington native told his colleagues when his illness forced him to resign last month after 17 years in the Senate.

The Fairfax Democrat died at home about 6 p.m., according to Sen. John Finn, who was named to replace Soule as a Franklin District senator. The retired insurance salesman had remained in bed since leaving the Statehouse Feb. 19, Finn said.

Funeral services are tentatively



SOULE

scheduled for 2 p.m. Tuesday at St. Mary's Church in St. Albans.

The Middlebury College graduate is survived by his wife Phyllis and seven children.

"He was a true and honest person," said Sen. Francis D. Howrigan, D-Franklin, who served five terms with Soule. "You always knew where he stood on everything. He was a very forthright person. Yet he was firm and fair. And he had a compassionate side, too."

When Soule resigned, Senate President Pro Tempore Peter Welch praised him for his contributions to education reform.

"There is not a person in this Senate, not a person in this General Assembly, serving now or who has served before us, who has done more to make a reality our common goal of equal educational opportunity for all kids in Vermont, rich and poor," Welch said in a Senate floor speech.

Gov. Madeleine M. Kunin said Soule was an extraordinary man

Turn to FORMER, 15A

## COMMENT ON THE DEATH OF FRANK SOULE

2 January 1986

Page 10 • THE VILLAGE BROADSIDER • January 8, 1986

SANDWICH, CAPE COD

# Opinion

## A sad good-bye

*"So when a great man dies,  
For years beyond our ken,  
The light he leaves behind him,  
Lies upon the paths of men."  
—Longfellow*

There are some people in this world who have the rare capacity to make significant changes in society, changes that often have far-reaching effects on the lives of others.

Among the many townspeople who knew him, Frank Soule, in his quiet, dedicated way, was such a man.

Residents and associates were shocked and saddened to learn of Frank's sudden death last Thursday.

Although he and his family knew he was seriously ill for the past several months, it was never apparent to the outside world.

Right to the end, despite what we now realize must have been a very difficult, painful time, Frank presented his usual cheerful, witty, and always positive attitude to everyone.

A physician with the United States Navy, Frank retired as captain after 25 years of service. He continued working in his field for several years as a medical education director before moving to Sandwich with his wife Bette six years ago.

# Former Sen. Soule Dies Of Cancer at Age 68

From Page 1A

with deep convictions.

"He felt very intensely about the people he served and the causes he supported. When he spoke on a bill, he got very emotional and I think it was embarrassing to him, but it showed how deeply he felt.

"What he said really came from who he was. There was no evasion, there was no embroidery. He was an honest and loyal man. I will miss him greatly."

Former Gov. Richard A. Snelling was dismayed when told of Soule's death Friday night.

"I was very fond of him," Snelling said. "He was sort of what you expected in a Vermonter."

While often cited for his education work, Soule should be remembered as a "competent all-around senator," Snelling said.

The four-term Republican chief executive said Soule was "not very partisan" and was recognized by both parties for his efforts.

Soule and Sen. William Doyle, R-Washington, came to the Senate in 1969 and served on the Education Committee together. They were second in seniority in the Senate when the legislative session opened this year.

Doyle said Soule was a man of principle, even if it went against the feelings of people back home. Soule was "a tremendous advocate for public education," and was a strong supporter of public kindergarten, Doyle said.

Soule also believed in special education tempered with fiscal responsibility, Doyle said.

About four years ago, in an unusual move, Soule was named to joint conference committee when the two chambers could not agree on an appropriations bill, Doyle said. The members normally come from the two appropriations committees, but Soule was picked because of his understanding of formula for distri-

bution of state aid to education, which had been a key issue in the dispute, Doyle said.

"It shows the degree of respect Senator Soule had," Doyle said.

Soule was chairman of the Senate Education Committee and represented the Democrats on the Senate committee that appoints committee chairmen and members.

Finn, who described Soule as "a true gentleman," praised the senator's dedication. "He was the kind of legislator who was at work every morning at 6:30 a.m. There aren't many that do that."

Dr. Larry Larrow, a St. Albans veterinarian and longtime friend of Soule's, broke down when speaking of him Friday night. "For the past 25 years, he visited my clinic almost daily. It's hard to say whether I considered him as a father or as a brother.

"It's a tremendous loss," said Sen. Thomas Crowley, D-Chittenden. "So much talent taken," said Crowley, the only senator with more time in the upper chamber.

"Dick was a real gentleman and a true friend," Crowley said.

St. Albans Mayor Floyd Handy, who is also a legislator, said he learned a lot from Soule.

"I realize more than before I became a legislator, how well-respected he was in Montpelier. He made a fine contribution to our county community," Handy said. "He always stopped by at City Hall and I would pick up a tip or two."

"He was very well-respected and his mark went beyond the city. It was the whole state."

Soule had been a trustee of the Vermont State Colleges and was a member of the Vermont Educational Television Council. He served with the Vermont Health Policy Corp. and the Natural Gas and Oil Resources Board.

Staff Writer Peggy Grodinsky contributed to this report.

The public library became their first love, and soon both were volunteering in the homebound program.

Recognizing the need for the library expansion, Frank worked long and hard as chairman of the building committee, and was the driving force in gaining voter support to finance the new addition.

On successful completion of that project, his valuable services were tapped once again, and Frank was appointed to both the finance committee and the school building committee.

His associates in these endeavors referred fondly to Frank last week as a "straightforward, witty, intelligent man," who had "a special gift of working with people," and one whose "integrity will long be remembered."

His efforts on the library project in particular, officials said, will have a tremendous impact on everybody in town for years to come.

And so we say good-bye. We missed out on the quantity of time in knowing him, but the quality of that time is beyond measure. Those of us who were touched by his wisdom and sincerity are grateful for the time we had.

## SOULE KINDRED NEWS

# Americans make trip back 'home'

WHAT THEY SAID

ABOUT US

IN ENGLAND

From Nils Wilkes, Eckington

**A PARTY of 20 American tourists descended on a county village during a pilgrimage to trace their roots.**

The visitors, all proven descendants of George Soule, who sailed from England on the Mayflower, came to see his most likely birthplace at Eckington.

The members of the Soule Kindred Society met local historian Mr Nils Wilkes and villagers at a church service and buffet, and then toured places of interest.

One of them was the family home of Edward Winslow at Kerswell Green, near Kempsey. He sailed with George Soule on the 17th Century pilgrimage.

"We were just expecting to take pictures but were shown round the house," said Mr Wilkes. "The Americans just about fell over — they couldn't believe it. It was a very successful day."

He got involved with the group four years ago after the village received

a letter from America. He did some research and established the link.

Mr Wilkes, a 39-year-old engineer who lives in Boon Street, Eckington, is pictured pointing out village features to (from the left): Linda Soule Preston, society president, Geraldine Soule Schlosser, Trip organiser, and society co-founder George Soule.

The group, who are staying in Stratford, were on a ten day trip and included in it lunch with the mayor of Evesham.



WORCESTER EVENING NEWS  
WED. 28TH MAY 1986

Nils Wilkes who lives in the village and is interested in local history has done a lot of research on the subject.

"After four years of research we still cannot prove it but everybody thinks the most likely birthplace of George Soule is Eckington, although we're not 100 per cent certain.

## Remembering

A party of American tourists will be planting a tree today in the village churchyard at Eckington, near Pershore, to honour ancestors

*Sunday Mercury*  
- 25/5-86.

WORCESTER EVENING NEWS  
FRIDAY 23RD MAY 1986

# US tourists go back to their roots

**A GROUP of American tourists are making a special pilgrimage to a county village this weekend.**

The party of present-day pilgrims are keen to trace their roots and are all proven descendants of Eckington man George Soule who sailed to America on the Mayflower.

"He sailed with Edward Winslow who came from Droitwich and he became quite an eminent member of the pilgrim colony living until the age of 80.

"He would have been born around 1600 but the parish register for that year was lost 200 years ago."

The members of the Soule Kindred Society are on a 10-day trip and plan to visit Stratford and are having lunch with the Mayor of Evesham on Saturday.

On Sunday they are going to plant a tree in Eckington's Holy Trinity Churchyard to honour their ancestors.

Mr Wilkes, a 39-year-old county council assistant engineer, lives in Boon Street.

From George S. Soule, Philadelphia, PA

By DAVID IAMS



Society

**Mayflower folk**

Even more conscious of their past were the members of the Society of Mayflower Descendants, who celebrated their annual spring tea Sunday at Wynnestay, the home in Wynnefield of George S. Soule, and one of the oldest continuously occupied residences in Philadelphia.

For all their knowledge of history, a surprising number of the 75 guests were unaware of the existence of the house, which dates to around 1690. "I just didn't know it was here, said Herbert Brown, a relatively new member of the society.

Mr. Brown had recently become interested in genealogy and had discovered that he was an indirect descendant of John Howland. Among Mayflower progeny that is a fairly modest claim, since Howland was one of the most prolific of Mayflower passengers, having fathered 13 children who lived.

Higher on the Mayflower descendant scale are the direct descendants, those who bear the same family name. Along with direct-descendant Soule, Sunday's party attracted direct descendants Paul Bradford and Bill Brewster, there with his wife, Ann. Bradford, a ninth-generation descendant of "Uncle William" Bradford, the Plymouth Colony's first governor, looked reprovingly at Mr. Brewster when Mr. Brewster said he was not sure whether he was 11th, 12th or 13th generation.

Mr. Bradford had his own confession to make, however. "I broke up the thing," he said. "I had three daughters."

◆◆ Tuesday, June 17, 1986 The Philadelphia Inquirer 3-D



The Philadelphia Inquirer / J. KYLE KEENER

Mayflower descendants (from left) Paul Bradford, Bill Brewster, George S. Soule and Barbara Kidder listen to Esther Wideman play harpsichord at Sunday tea in Wynnefield.

THE TOMAH JOURNAL  
THURSDAY, APR. 24, 1986

**Deb Chesser elected to BPW/USA position**

Deb Chesser, a resident of Tomah and the daughter of Howard and Marjorie Sowle, also of Tomah, was elected to the Board of Directors of the Wisconsin Federation of Business and Professional Women, Inc. Her position on the board is the Director of Coulee Region District Four, which comprises of seven local organizations within District Four, a total of 180 members. Mrs. Chesser's duties will be presiding over District meetings and training sessions, visiting each local organization within her District, and a voice for her District at state board meetings and conventions, as well as attending workshops and seminars to aid her in her duties.

Chesser is an eight-year member of the Tomah chapter of BPW/USA. She has served on several key committees, locally at District and State, served as President of the Tomah BPW/USA from 1983 to 1985, First Vice President during '82-'83, 1985 she was elected

Assistant District Director of Coulee Region District Four.

When asked, "What is BPW and what does BPW mean to her?" Chesser replied, "I could talk for hours on what BPW is and means to me. BPW is an organization that strives to make the world a better place to work and live. BPW is not just a local or state organization, there is a BPW organization located in many cities in all 50 of the United States and Puerto Rico. BPW is also International. There are BPW organizations in many free European and Asian countries. BPW works for legislation that not only helps women, but all. BPW, through its workshops and seminars, has helped me to gain confidence in myself, to strive for my goals and make them, to not be afraid to voice my opinions. BPW is not a political organization or a radical feminist one either. We believe in democracy, what our ancestors came to this country for, and the Constitution of the United States. We can't change

the past, but we can try and make the future better for the children who are our future. Being a part of that is what BPW is

and means to me. I am proud to be a member of such an organization."

She is the mother of one child, an Assistant Brownie Troop leader, a veteran of the U.S. Army, employed at Ft. McCoy and the owner of Deb's Office Service, a Micro-Computer Consultant service here in Tomah.

Deb's lineage:  
George-1 Soule,  
Nathaniel-2,  
Nathaniel-3, Wesson  
Sowle-4, James-5,  
Wesson-6, Hiram-7,  
Harvey-8, Herbert-9,  
Howard-10,  
Deborah-11.

From Geraldine Schlosser, Tomah, WI

At our request, Gladys Page sent in the interview about the trip to England which appeared in her home newspaper. She wrote: "I am home and fairly rested.....Well, I really enjoyed the trip and I am glad I went. It was nice to go with the Soule Kindred....."

Wednesday, June 11, 1986 THE CHANUTE TRIBUNE Page 11

## England trip traces past

By CONNIE WOODARD

For the past year, Gladys Page arose every morning and declared she was healthy enough to go that day. She made an effort to do everything she could to keep her health, and then the 86-year-old woman left on a nine-day trip to England.

"I was pretty tired when I got home, but I kept up with the group," said Page, of 516 S. Lincoln. It was a trip she had wanted to make for a long time.

PAGE HAD A special reason for wanting to visit England. A descendent of Mayflower passenger George Soule, she and her daughter, Marie Freidline, Clearwater, were two of 20 persons who signed up for the "Soule family tour" May 19-30.

Page first learned in elementary school that she was a descendent of the voyagers on that 1620 ship.

While a student in a Nowata, Okla., she saw the name Soule printed on the list of pilgrims who traveled on the Mayflower. "I showed it to my teacher and said, 'That's my name.'"

She also went home and told her parents. Eventually a nephew and another Soule used county notices and burial records to trace the name back in history. Now, there are records that list several hundred persons in an organization called the Descendents of George Soule — a group that mails out quarterly newsletters.

"I have always thought I'd like to visit England because of all the interesting stories. I knew it'd be interesting and it was," she said. One of the places visited was Plymouth Harbor, where a plaque and monument have been erected in the pilgrim's memory.

On the plaque is the name George Soule, although it is spelled Sowle. One of the problems of tracing the family is that the name was spelled differently on many of the family documents, Page explained.

MOST OF THE information has been compiled by Nils Wilkes in a book titled, "In Search Of George Soule, of the Mayflower." Because so many records have been destroyed, the book "tells more of who we weren't than who we were," she said.

What they have learned is that Soule was listed as a manservant to Edward Winslow, and that he may have worked for Winslow in England before sailing on the Mayflower.



Gladys Page

The Winslow home was another of the places visited by the American descendents. "We were just supposed to look at the house and the yard," she said, "but the lady of the house went ahead and fixed a tea for us and invited us all in. She was very gracious," Page recalled.

The group traveled on to Evesham, a city where many Soules lived including one Robert Soule, whose 1593 Will bequeathed son George (the

pilgrim) some property. While there, Page said the group met with members of The Vale of Evesham Historical Society — a group who had researched their records for any information that might be of interest to the tourists.

"It's one thing to read about a place and another to actually see it, you know it really exists then," she commented.

THEY ALSO VISITED the Eck-

ington Church, in a village of 1,500, where the Soules were thought to be members. A special service was held for the tourists, one similar to the 1500 services, and group members planted a tree outside as a memorial to Soule.

"I don't think we're any more special than anyone else," she said about being a Mayflower descendent, "but that's something to be proud of — that heritage."

## QUESTIONS AND ANSWERS

From Mrs. Anna Sheffield Western, P.O. Box 703, Highlands, NC 28741

I have been trying to prove a connection back to Pilgrim George Soule for the past five years. My application has not been accepted because I have been unable to prove one generation, which happens to be the next generation following the information given in the Soule genealogy as published in Mayflower Families-3. My line follows:

George Soule-1  
 Susannah Soule-2 m. Francis West  
 Susannah West-3 m. Moses Barber  
 Benjamin Barber-4 m. Mary Teft  
 Nathan Barber-5 m. Thankful Randall  
 Lydia Barber-6 m. James Sheffield  
 Coddington Sheffield-7 m. Cynthia Bidwell  
 Sanford Sheffield-8 m. Julia Lewis  
 James Sheffield-9 m. Anna Fox  
 Elmore Sheffield-10 m. Mildred Olcott  
 Anna Louise Sheffield-11 m. 1-Franck Meade 2-Dallas Western

The problem generation is to prove that Coddington Sheffield was the son of James Sheffield. This family lived in Westerly, RI and the family included 12 children (listed below) and I have been unable to find a birth record for any one.

Alfred m. Phebe Brown, Westerly  
 Fannie, m. Lucius Carpenter  
 Lydia, m. George Crumb  
 Mary m. 1-Elnathan Burdick 2-Lucius Carpenter  
 Avery - d. young  
 Emery m. Esther Burdick  
 Thankful m. Aron Belding  
 Susan m. 1-Edmund Church 2-(---)Lewis 3-(---)Case  
 \*Coddington m. Cynthia Bidwell  
 Celia m. Joel House  
 Harriet m. David R. Chapin  
 Thomas m. Mary Murphy

I have found marriage records and much information to substantiate this information but not a will, birth record, or land record. I hope that possibly there are members in Soule Kindred that stem from one of the other children of the union of Lydia Barber and James Sheffield and can give me some direction or assistance.

+ + + + +

### BY POPULAR REQUEST

One of the great events of the Soule Tour to England was the visit to the Winslow Home. We did not expect to be invited in to look at the house, so we really appreciated the hospitality of the owners, Mr. & Mrs. P. G. Rimell. Mrs. Rimmell (Valerie) served us a beautiful tea, with lovely sweets and fragile tea cups. She gave us her recipe for macaroons, and we share it with all of you.

8 oz. castor's sugar	2 t. ground rice
4 oz. sieved ground almonds	2 egg whites
Rice paper	

Mix sugar, almonds, rice. Stir in unbeaten egg whites. Spread out on a tin (sheet) covered with rice paper. Spread out in squares with almond in centers. [Did not get baking instructions, but I assume that a good cook can figure it out by trial & error.]

## LINEAGES

*From Shirley Soule Smith, 140 Monticello Ave., Annapolis, MD 21401*

To bring up to date the lineage (on page 557, V.1 of Ridlon: see p.26 of the Index) of Florence-8 Evelyn Soule Smith and Henry Porter Smith: As of May 15, 1985

They had two daughters:

1. Shirley-9 Soule Smith, born 18 May 1901 Framingham MA
2. Sybil-9 Graham Smith, born 2 Apr 1905; m. Robert Alexander Cook 21 Apr 1928 in Wellesley, MA

1. Constance-10 Alexandra Cook, born 2 Dec 1931 Annapolis, MD; m. John Anthony Schuyler 26 Sep 1951 in Annapolis

1. Leigh-11 Alexandra Schuyler, born 22 Apr 1956 Annapolis; m. Rob Roy Houck 1 July 1979 in Annapolis

1. James-12 Schuyler Houck, born 23 Feb 1979 Annapolis

2. Rob-12 Roy Houck, Jr., born 25 Aug 1981 in Annapolis

2. Lt. Elizabeth-11 Allison Schuyler, USN (NC) born 14 Sep 1957 in Annapolis; m. Capt. Christopher Kerry Joyce, USMC 17 June 1978. They were divorced and she is again Elizabeth-11 Allison Schuyler.

3. Jennifer-11 Cook Schuyler born 21 Aug 1966 in Annapolis

2. Shirley-10 Virginia Cook, born 26 Feb 1936 in Annapolis m. William Wilson Hatch 11 Apr 1959 in Annapolis

1. Sybil-11 Elizabeth Hatch, born 28 May 1960 Annapolis; m. Paul Anthony Goessling 23 June 1984 Annapolis

2. Consdance-11 [Constance?] Laura Hatch, born 6 May 1964 at Subic Bay, Phillipine Islands

3. Margaret-11 Anne Hatch born 19 Mar 1966 Annapolis

*From John Everett Stratton, 118 First Ave., Stratford, CT 06497*

Joanna-5 (Joseph-4, Joshua-3, John-2, George-1) Soule's daughter

Nancy-6 Soule Stetson married Seth Legrand Stratton 2 July 1805

Seth-7 Legrand Stratton jr. married Mary Louise Hubbell 1843

Elwood-8 Everett Stratton married Isabelle Bloss

Clifford-9 Bloss Stratton married Lillian Gledhill 1924

John-10 Everett Stratton married Rosemary Mocchietto 1962

John-11 Scott Stratton

+++++

*From Sharon R. Starr, 1615 N. E. 50th Avenue, Portland, Oregon 97213*

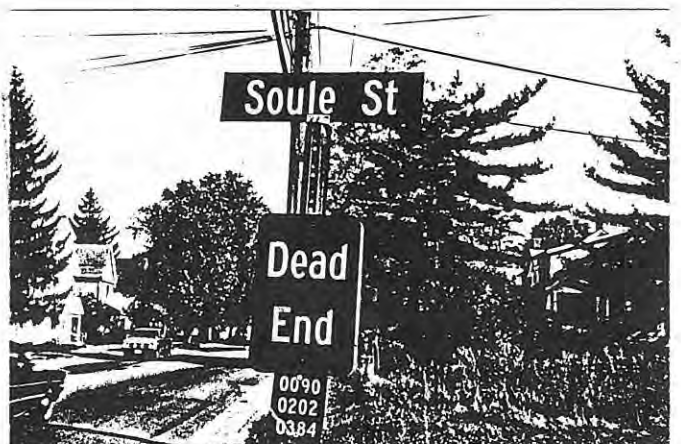
1. George Soule
2. Elizabeth Soule Walker b. ca 1640
3. Francis Walker b. ca 1665
4. Anne Walker Drake b. 9/22/1690
5. Ebenezer Drake b. 1/1/1703/4
6. Ephraim Drake b. 2/17/1732
7. Mary Drake Shay b. 8/20/1759
8. David Shay b. 2/25/1785
9. Timothy Shay b. 10/22/1807
10. Eleanor Shay Bradley b. 1/4/1835
11. Emma May Bradley Starr b. 1/8/1877
12. Harlan Frank Starr b. 10/29/1917
13. Sharon Ramona Starr b. 7/12/44

[Ed. note: The line from Francis Walker-3 is one which the Historian for the Mayflower Society does not accept. Dr. Milton Terry, Soule Kindred Historian, disagrees and is researching this.]

+++++

**STREET SIGN IN BENNINGTON VT>>>**

Please send to the editor any pictures of streets, buildings, parks, etc. with the SOULE name. If there is a story about it, send that too. [Although many of my SOWLE ancestors are from Bennington Co., I haven't found for whom this street was named. If any reader knows, please tell us. GSI]



LETTER OF THANKS FROM EVESHAM

# Vale of Evesham Historical Society

(Honorary Curators of the Museum)

Life President B. G. Cox  
 Chairman C. W. T. Huddy, F.L.A.  
 Vice-Chairman A. H. Fryer  
 Hon. Treasurer C. C. Grove  
 Hon. Editor D. C. Cox, B.A., Ph.d., F.S.A.  
 Hon. Secretary Mrs. M. Hawkard



The Almonry Museum,  
 Abbey Gate,  
 Evesham,  
 Worcs. WR11 4BG

Telephone Evesham (0386) 6944

Please reply to.....

Museum Custodians  
 Mr. & Mrs. D. G. Alcock

THE SOULE KINDRED SOC  
 c/o MR GEORGE S SOULE  
 5125 WOODBINE AVENUE  
 PHILADELPHIA  
 USA

Dear Mr George Soule,  
 May I through your good offices  
 express the thanks of the Vale of Evesham Historical  
 Soc to the Soule Kindred Society of America for their  
 very generous donation towards the running of the Almonry  
 museum at Evesham.

May I also express my personal thanks for the kind  
 invitation to lunch with your society at Abbey Manor.  
 I hope your members enjoyed the tour of Evesham  
 museum as much as I enjoyed escorting them round  
 it at any time in the future any of your members are  
 in Evesham, tell them not to hesitate to contact us and  
 we will provide any help we can.

Yours Sincerely Arthur H Fryer

(ARTHUR H FRYER)  
 VICE CHAIRMAN  
 VEHS.



Isabelle V. Freeman  
P.O. Box 1023  
Duxbury, Ma. 02331

Isabelle Freeman, Honorary Life Member of Soule Kindred, is a native resident of Duxbury. She has five lines to George Soule, as reported in the Newsletter in October 1983. As a former Assistant Historian for Soule Kindred, she has long been a student of Soule (and Pilgrim) history, especially in Duxbury. Presented here are her ideas on George Soule's burial place.

#### HARDEN HILL

Posterity will ask where George Soule was buried, but to date the location of his grave has not been determined. Being a native of Duxbury I postulate three possible locations.

He may have been buried on his own property on Powder Point, and, if so, it is fairly safe to assume that all traces of his grave have vanished in the past 300 years as the Point became a choice residential section.

Soule may have been buried in the Standish Cemetery where the Soule Kindred erected a monument in his memory, and, here, too, traces of his grave have never been found.

There is a third possible location where Soule may have been buried, and that is Harden Hill.

Justin Winsor, whose History of Duxbury was published in 1849, says (at pages 176 and 177) "Mr. Partridge (first minister of Duxbury) was probably interred in the first burial place of the town, which was a knoll in the Southeastern part of Harden Hill, as it is called. This was probably used as a place of sepulture for about 60 years and here were doubtless buried most of the founders of the town and church. Here probably rest the remains of Standish, Alden, Collier, Partridge, and others, whose memory we delight to cherish, but whose graves must forever remain unknown."

"Harden Hill" by I.V.Freeman

Mr. Winsor remarks that "the bank here has washed away some 20 feet within 50 years" and then he goes on to tell that after erosion of Harden Hill by ocean waves, certain coffins and skeletons were discovered. Winsor admits these might have been the remains of Indians, but he repeats his belief that Harden Hill was the first Duxbury burial ground.

My own memories of Harden Hill lead me to believe Winsor was right.

In the 'teens I spent many happy hours at Harden Hill and remember the very old two-family house occupied by my great uncles Theodore and William. The design of the house probably resulted from land erosion, for the earlier part was on a level with the unnamed driveway out to Standish Street, while Theodore's section was an ell tacked on just below the level of William's living quarters. This was not a common arrangement in those days, but a brick paved courtyard made this section homelike and attractive, and the downward slope of the drive made it readily accessible.

Back in the 'teens Summer time meant frequent picnics on the beach, where I declared Aunt Julia's ginger cookies were the world's best.

Springtime found me and my playmates rambling around the top of Harden Hill, seeking dog tooth violets, which grew most profusely among broken remnants of seven or eight ancient slate grave-markers.

So long ago !!!! and now the old Freeman house has been demolished and the unnamed driveway from Standish Street down to the Bay has been named Hornbeam Road, and some ten to fifteen attractive homes have been built there.

All very normal growth in this day and age, but I was shocked when two people informed me that Harden Hill was NOT located at the Bay end of Hornbeam Road, but was over on land owned by the Sisters of St. Margaret.

"Harden Hill" by I.V. Freeman

We rambled through the Sisters' grounds in our youthful days and I defy you to find much of a knoll there !!!

The contours of Harden Hill at the end of Hornbeam Road have been lost to view as brush and trees have grown thick and tall over the past 65 years.

I do not suggest that Developers knowingly built a house on or close to an ancient burial ground; I only suggest that the passage of time banished all visible signs of possible graves, and town records do not exist to prove that any graves were ever located there.

So, I offer you my childhood memories and suggest that George Soule, who died in 1680 may have been buried near Myles Standish who died in 1656 == or William Collier who died in 1671, or George Partridge who died in 1685, or near John Alden who died in 1686.

+ + + + +



In 1820, on the occasion of the bicentennial of the founding of Plymouth, a group of historically minded individuals dedicated a new organization to a continuing and expanding appreciation of the Pilgrims. The Pilgrim Society owns and operates Pilgrim Hall Museum, Coles Hill (the first burial ground of the Pilgrims), and the National Monument to the Forefathers. The Museum contains, among other Pilgrim possessions, a gourd bottle and latten spoon that belonged to George Soule.

The Pilgrim Society is now dedicated to research, publication, and display of material about Plymouth's earliest settlers and those who followed them to the area. The museum with its library and exhibits is open all year to visitors and researchers.

Because of Soule Kindred's special interest in the Pilgrims, members are invited to join the Pilgrim Society. For information, contact:

## PILGRIM SOCIETY

*Founded 1820*

75 COURT STREET

PLYMOUTH, MASSACHUSETTS 02360-3891

617-746-1620

# FROM THE PAST

[Editor's Note: Alberta N. Soule, a long-time Kindred member, has sent me a number of documents relating to the history of Middleboro, MA. I am including in this issue her summary concerning lands owned by George Soule and his descendants in East Middleboro, MA. Publication of this material does not constitute an endorsement by the Editor or Historian; further research in early land records in Massachusetts is suggested. The map reproduced below and other references to Midd. History refer to *History of the Town of Middleboro* by Thomas Weston, Boston, 1906.]

Middleboro, Mass.

From Midd. History

Sixteen Shilling Purchase 1675 Pg. 621

South Purchase 1673 Pg. 615

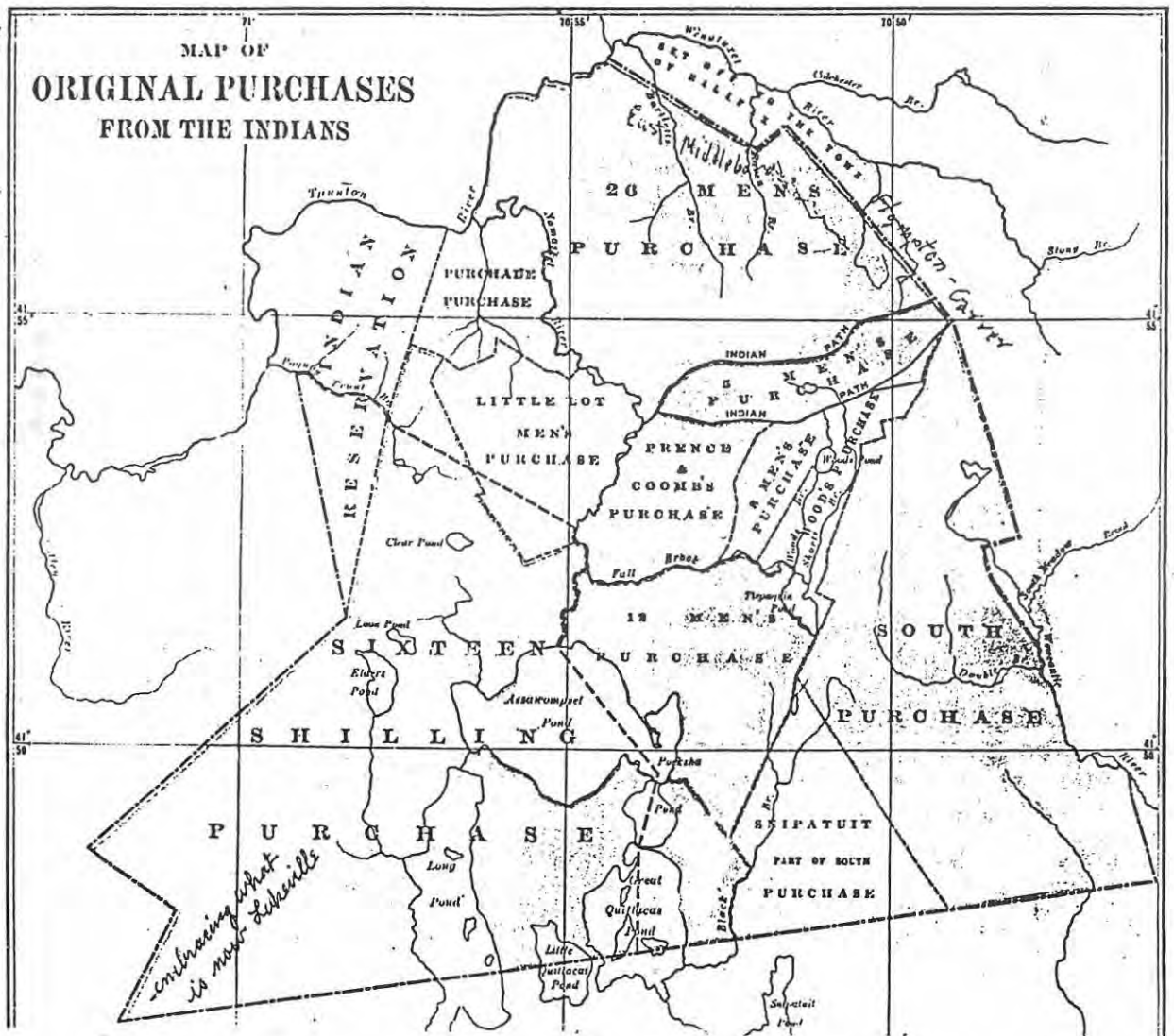
John Soule - son of George Soule the Pilgrim was one of the proprietors of each of the above Purchases.

He was one of the three men who layed out the bounds of the Town of Middleboro (after King Phillip's War in 1675-1676)

June 24 - 1651 Pg. 350

George Soule (Pilgrim) was one of 26 men who purchased the first land in Middleboro from the Indians 1661 Pg. 586

Also one of the proprietors of the Purchase Purchase 1662 - Pg. 586



IMPORTANT INFORMATION IN REGARD TO VOLUME 3  
CONCERNING LANDS OWNED BY GEORGE SOULE AND HIS DESCENDANTS  
IN EAST MIDDLEBORO, MASS. 1700 - 1985

I believe it is up to me, being the oldest member of the Soule family living in Middleboro, to correct what should be on record as being an error in Volume 3 -- George Soule, First Five Generation project.

On Page 4, third paragraph, a statement of the disposal of the George Soule property in Middleboro in 1668 lends to the idea that George Soule had no property left in Middleboro. This is incorrect.

George Soule was a large landholder in Middleboro. He was one of the 26 men in the first purchase of land from the Indians in 1661. (Midd. Hist. Pg. 566) He was also one of the proprietors of the Purchase Purchase in 1662. (Midd. Hist. Pg. 596) He sold or gave lands to his two daughters, Priscilla Hascol and Elizabeth Walker - just which lands I do not know, but it was previous to King Phillips War in 1675-1676. At the time of King Phillips War, George Soule was listed as among those who took refuge in the Old Fort (Midd. Hist. Pg. 35). There is no record that George Soule was living in Middleboro at that time, but he was one of the extensive landholders. Those living in the Old Fort petitioned the General Court to have three Militia escort them to Plymouth for safety, where they remained until after the war was over. Every house in Middleboro was burned by the Indians, with the exception of one, which is said to have been the Morton house.

After the War, inhabitants returned to the Town, and John Soule, (son of George Soule) John Tomson and Isaac Howland were chosen to settle the bounds of the Town of Middleboro, April 6, 1686 (Midd. Hist. Pg. 559). The proprietors meeting, held at the home of John Howland, Sept. 26, 1695, confirmed the bounds. A list of the inhabitants of the Township of Middlebery (Middleboro) named John Soule Sr., John Soule Jr. and James Soule as residents, November 1695. John Soule Sr., was himself a large landholder at this time, having been one of the proprietors of the South Purchase (1673) and the Sixteen Shilling Purchase in 1675, (Midd. Hist. Pgs. 615 and 621).

After the lands were surveyed, it was apportioned among the proprietors for whom it had been purchased. George Soule is listed among the names of the original purchases, (Midd. Hist. Pg. 585) and N. E. Historical Land Genealogical Register, Vol. 3, Pg. 334.

In 1690, James Soule, grandson of George Soule, with his younger brother John Soule, then a small boy, moved to Middleboro from Duxbury. The first Soule house was built about the year 1700. I have been told where the first house was located, and shown the site. It was burned when John was still a small boy, (Pg. 350 Midd. Hist.). The oldest Soule home when I was a girl was adjacent to the site of the first home which was also destroyed by fire. It was located down the lane, an extension of Winter St. to the East, about 1/4 mile East of the corner of Cedar and Winter Sts. In an old family record book it is stated that James Soule built his house on this site. In old records, we have Jacob Soule (fourth generation) son of James Soule, living in this house in 1731. Both my husband and myself are descendants of this same

Soule. My line follows through from Jacob Jr., and my husband's line comes through son Isaac Soule. My father, Charles H. Soule, owned this property at the time of his death in 1948. The house had burned in the mid 20's. We know from old Church records and from family records, Town records etc. that Soules have been residents of this East Middleboro area, known as the Soule Neighborhood, for all these many years, and that the area was a part of the 26 Men's Purchase from the Indians. Several acres of land in that area are owned by Soules and their descendants, among whom are William, Charles, George, Douglas, and David Soule; also Mary Lou (Soule) Webb and Sherwood Griffith.

In 1850 every house on Cedar Street as far as Soule Street was occupied by a Soule, with the exception of one, and that was the home formerly belonging to Alfred Soule, then occupied by Leach. Every house on Soule Street, with the exception of one, was occupied by a Soule family, and that was occupied by a Cobb.

As of today, there are no Soule families bearing that name living in the Soule Neighborhood area, but Mildred (Soule) Badger, my sister, is still living on the James Soule place (not the first James) which my father bought in 1899 from Horace Soule, son of James Soule. In other parts of the Town, there are Soules and other descendants of these first Soule families still living, some having different surnames.

The second oldest cemetery in this Town is located opposite The First Congregational Church in the East Middleboro section of Town, known as the Middleboro Green, because it was formerly the Training Green for the Militia of the Town. The Cemetery land was sold to the proprietors of the Cemetery in 1717 by James Soule, himself reserving the Northwest corner of said lot for himself and his heirs. Many Soules are buried in this plot, my Great Grandmother and Great Grandfather being the last two, in 1883. Other parts of the Cemetery contain the graves of many Soules. I am enclosing a copy of the records of the Green Cemetery from 1717-1850.\* James Soule also gave to the Town of Middleboro land adjacent to the Cemetery for a Training Green for the Militia. From the steps of the Church opposite the Training Green men went forth to serve our country, several Soules among them.

I have tried to prove out the error in Volume 3, George Soule -- Soon after the book was published, I wrote of the error, but not at length, but was informed that I was in error as George Soule had sold all of his lands in Middleboro in 1668. That was before King Phillips War, when all Town records were lost. The fact remains that after the war, George Soule was still a large owner of lands in Middleboro as documented in the Middleboro History, etc. George Soule, the Pilgrim, died in 1690.\* His son, John, was one of the three men who layed out the bounds of the Town of Middleboro, appointed to do such in 1686. I know that Soules have lived in the East Middleboro area, known as the Soule Neighborhood, comprising Cedar, Winter and Soule Streets, since the early 1700's, and this area is a portion of the 26 Men's Purchase.

\*This date is apparently a typographical error, since George Soule's will was probated in 1679.[65]

*Alberta N. Soule*  
 Alberta N. Soule (10)

## NEW MEMBERS SINCE APRIL 1986

Johnson, Eleanor S., Soule Rd., Chebeague Island, ME 04017  
 Keenan, Miss Connie, 143 Monroe St., Kalamazoo, MI 49007  
 Keenan, Mrs. Florence L., 133 Brighton Lake Rd., Brighton, MI 48116  
 Nickeson, Virginia H., 4402 Winnequah Rd., Madison, WI 53716  
 Snyder, Merton F., 3325 W. 55th St., Edina, MN 55410-2323  
 Soule, Amy D., 2883 Kissel Hill Rd., Lititz, PA 17543  
 Soule, Dennis W., 725 Gwyn Dr., Mankato, MN 56001 (Reinstated)

## NEW LIFE MEMBER

Pettit, Mrs. Kay, 803 Nichols, Fulton, MO 65251

## SOWL REUNION

There will be a SOWL reunion on August 23, 1986 at the Argyle, WI Community Park. This will be a special celebration to honor our oldest SOWL, Josie Sowl Hessler, who will be 90 Sept. 8th. Her lineage: George-1, Nathaniel-2, Sylvanus-3 Sowle, William-4, Edward-5 Sowl, William-6, Elijah-7, William-8, David A.-9, Josephine-10.

Josie was born in Argyle, WI, in the town that her great-grandfather, Elijah, helped pioneer in 1842. (This family story was printed in the April 1985 Soule Kindred Newsletter.)

All "souls" are invited to the reunion. For further information, contact Juliette J. Sowl, 1403 Wyldhaven Avenue, Monona, WI 53716.

## ORDER FORM

SOULE KINDRED NEWSLETTER  
 \$2.50 per issue; \$10.00 per year

[Make checks payable to Soule Kindred in America, Inc. and send to P.O. Box 1146, Duxbury, MA 02331.]

I enclose \$ \_\_\_\_\_ for \_\_\_\_\_ copies of back issues as checked:

1967-V.1 #1( )	#3( )	#4( )	1977-V.11 #1( )	#2( )	#3( )	#4( )
1968-V.2 #1( )	#2( )	#3( )	1978-V.12 #1( )	#2( )	#3( )	#4( )
1969-V.3 #1( )	#2( )	#3( )	1979-V.13 #1( )	#2( )	#3( )	#4( )
1970-V.4	#3( )		1980-V.14 #1( )	#2( )	#3( )	#4( )
1971-V.5 #1( )	#2( )	#3( )	1981-V.15 #1( )	#2( )	#3( )	#4( )
1972-V.6	#2( )	#3( )	1982-V.16 #1( )	#2( )	#3( )	#4( )
1973-V.7 #1( )	#2( )	#3( )	1983-V.17 #1( )	#2( )	#3( )	#4( )
1974-V.8 #1( )	#2( )	#3( )	1984-V.18 #1( )	#2( )	#3( )	#4( )
1975-V.9 #1( )	#2( )	#3( )	1985-V.19 #1( )	#2( )	#3( )	#4( )
1976-V.10#1( )	#2( )	#3( )	1986-V.20 #1( )	#2( )		

NAME: \_\_\_\_\_  
 STREET ADDRESS: \_\_\_\_\_  
 CITY: \_\_\_\_\_ STATE: \_\_\_\_\_ ZIP: \_\_\_\_\_



● Rev Canon Roger Howes and Mr Nils Wilkes (left), of Eckington, pictured inside Eckington church with three of the principal members of the Soule Kindred Society during their visit to the village. Linda Soule Preston (2nd left) president, Geraldine Sowle Schlosser (2nd right), organiser, and co-founder George Soule (right).

*Berlin's Journal 31st May 1986*



ADDRESS CORRECTION REQUESTED  
RETURN POSTAGE GUARANTEED

SOULE KINDRED IN AMERICA, INC.  
P.O. BOX 1146  
DUXBURY, MA 02331

Bulk Rate  
U.S. POSTAGE  
PAID  
Tomah, WI  
Permit # 143