

SOULE NEWSLETTER

Library of Congress No. C 371, S 717, Volume XVII, No. 1, January, 1983, Page 1
Published by Soule Kindred, Inc., P.O. Box 1146, Duxbury, Massachusetts 02332

Soule Kindred Reunion July 7-10, 1983



Santa Fe



The SOULE KINDRED NEWSLETTER is published quarterly (January, April, July, and October) by Soule Kindred in America, Inc. Dues are \$10.00 per year; subscriptions will begin with the first issue of the current year. Late subscribers will be sent back issues for the current year. Subscriptions with checks made payable to Soule Kindred should be sent to the Treasurer at 1491 McClellan St., Schenectady, Ny 12309.

Soule Kindred

P. O. Box 1146
Duxbury, Mass. 02332

Life Membership . . . \$100.00
Patron Membership . . . 50.00
Sustaining Membership . . . 25.00
Regular Membership . . . 10.00

SOULE KINDRED OFFICERS

PRESIDENT

Glenn L. Whitecotten, M.D., 385
Richard Court, Los Alamos, NM 78544

FIRST VICE PRESIDENT

Ben George Soule, 7405 Queen
Avenue South, Minneapolis, MN 55423

SECOND VICE PRESIDENT

Linda Soule Preston, 2340
Grandview Avenue, Cincinnati, Ohio
45206

COUNSELLOR

Kenneth C. Tiffin, 50 Highland,
Holliston, MA 01746

TREASURER

Betty-Jean Haner, 1491 McClellan
St. Schenectady, NY 12309

HISTORIAN

Dr. Milton Terry, 381 Creek Bed
Rd., Mountainside, NJ 07092

MEMBERSHIP SECRETARY

Mrs. Paul (Avis) Haner, 53 New
Shaker Rd., Albany, NY 12205

SECRETARY TO THE BOARD

Mrs. Thomas (Marian) O'Connell,
2027 Allen Place, N.W., Washington,
D.C. 20009

NEWSLETTER EDITOR

Mrs. James (Geraldine) Schlosser,
3060 N. Hackett Ave., Milwaukee, WI
53211

NEWSLETTER PUBLISHER

W. Fred Soules, P.O. Box 250,
Lorena, TX 76655

NEWSLETTER INDEXER

Mrs. Frank (Mary) Crismore, 3139
W. 51st St., Indianapolis, IN 46208

BOARD OF DIRECTORS

Class of 1983

Opal Soule Manly
Linda Preston
Betty Whitecotten

Class of 1984

Dan Pearce
Mary Kelly
Dorothea Wilhelm

Class of 1985

Glenn Whitecotten
George S. Soule
Ben George Soule

PERMANENT OFFICE

Sabina D. Crosby, P.O. Box 1146,
Duxbury, MA 02332



FROM THE EDITOR ...

We are initiating a Table of Contents with this issue. This is to facilitate

locating articles quickly.

Note that we have to register earlier than usual for the Soule Kindred Reunion. Dr. Milton Terry, the Family Historian, has an interesting article on the Mary Haskell lineage, in the first of a series.

Thanks to Mary Crismore for the complete index to the 1982 Newsletter. The list of members will be in the April Newsletter. Be sure to send your dues to Betty-Jean Haner so you will be included.

TABLE OF CONTENTS

Officers- - - - - 2

Editor's Note - - - - - 2

President's Corner: Soule Kindred Reunion, Santa Fe- - - - - 4

Family Historian's Report - - - - - 8

Lineage - Lorraine White Ring - - - - - -10

Milestones- - - - - -11

Miniature Horse Herd- - - - - -12

Kindred News- - - - - -13

Soule Canal - - - - - -14

1898 Letter (Lizzie Soule)- - - - - -16

Questions and Answers - - - - - -17

Tomah Sowle Reunion - - - - - -17

Maine Vital Records Index - - - - - -18

Family Data Form- - - - - -20

Meet your Officers: Daniel Pearce - - - - - -23

Meet your Officers: Opal Manly- - - - - -24

Index to Soule Kindred Newsletter, Volume 16, 1982- - - - - -25

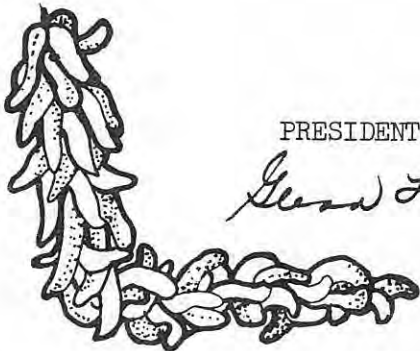
Order Form - Back Issues of Newsletter- - - - - -39

Reunion Information - - - - - -40

This is YOUR
NEWSLETTER! Share
what you're doing
by sending the
information.



Send news of
births,
graduations,
awards, weddings,
deaths, and
activities to the
Editor.



PRESIDENT'S CORNER . . .

Gene L. Whitecotton

SOULE KINDRED REUNION
JULY 7-10, 1983
SANTA FE, NEW MEXICO

DEAR COUSINS,

I have recently been attempting to firm up some of the arrangements for the Santa Fe, New Mexico, Soule Kindred Reunion, July 7-10, 1983. After having checked with several lodging sites in Santa Fe, my choice is the Sheraton Motor Inn. The management of the Sheraton have assured me that those wishing to obtain accommodations as a group MUST REGISTER NO LATER than LATE FEBRUARY. The need for such an early registration is the result of a very full and busy tourist season in Santa Fe each summer. I, therefore, urge those who are considering attendance at the reunion to MAKE YOUR PLANS EARLY.

EARLY REGISTRATION * * * A MUST

For this reason, registration forms have been included in this issue of the Newsletter.

REUNION EVENTS

The following is a tentative schedule, and may be refined further as planning continues:

THURSDAY (July 7) -- 6:00-9:00 PM - Registration and reacquaintance time.
Sheraton Motor Inn

FRIDAY (July 8) -- 9:00 AM - Gray Line tour of Santa Fe.
Noon - lunch, individuals make their own arrangements or dine together. Dutch treat.
Afternoon - tour on your own, shop in any number of Santa Fe's boutiques or art galleries.
4:00-5:00 - Board Member & Officer's meeting - Sheraton
6:00 - Cocktail hour
7:00-9:00 - Dinner - Buffet at the Sheraton - Program.
Dinner guests: Mayflower Society members of Santa Fe.

SATURDAY (July 9) -- 9:00 AM Chartered bus pick-up at the Sheraton -
10:00 PM Return to the Sheraton by bus

Events:

1. A visit to a Pueblo Indian Village - San Ildefonso Pueblo which was the home of the late, world famous master potter, Maria Martinez.
2. Overlook Park in White Rock, NM. Spectacular views of White Rock Canyon and the Rio Grande River.

Reunion events, cont'd ...

3. Bandelier National Monument - ancient Pueblo Indian cliff dwellings. Box lunch on the grounds of the park. (If time permits, we may be able to visit the Puye Cliff Dwellings in Santa Clara Canyon, Santa Clara Pueblo.)
4. A visit to the Los Alamos National Laboratories Museum.
5. A visit to Fuller Lodge Museum - optional, depending on time.
6. Dinner on the grounds of the Whitecotton home, Los Alamos. Mild canyon hikes for those who wish. Evening program and general business meeting.
7. Return to the Sheraton - 10 PM.

SUNDAY (July 10) -- Church as a group - Historic St. Francis Cathedral near the Plaza in Santa Fe.

Lunch together - Sheraton - Dutch treat.

Adjourn.

A TENTATIVE SUMMARY OF COSTS

I have been attempting to ascertain costs, and I have included a listing which will give you some idea of what to expect. I hope to have more firm figures for presentation in the April issue of the Newsletter. The following may be helpful to you for advance planning:

1. Shuttle service, Albuquerque to Santa Fe - \$15/person - one way.
2. Sheraton -- room rates: \$71/double & \$61/single.
3. GrayLine tour of Santa Fe -- group rate \$4.50/person.
4. Bus transportation for all day Saturday -- \$25/person.
5. Box lunch, Saturday -- \$5-6/person.
6. Catered dinner, Saturday evening -- \$10/person.

SUMMER EVENTS IN SANTA FE

A number of people may wish to come early or stay late and, thereby, take advantage of a number of Santa Fe events.

June 4-Oct. 11. Chama: Cumbres and Toltec Scenic Railroad. Spectacular trip through the mountains on a narrow-gauge train. For schedules call (505) 756-2151.

July 1-4. Mescalero: Ceremonials. Annual Mescalero Apache Maidens Puberty Rites. Mountain Spirit dance at dusk. Plus an all-Indian rodeo. Information: (505) 671-4495.

July 10-Aug. 15. Santa Fe: Chamber Music Festival. Internationally acclaimed musicians. St. Francis Auditorium and Santuario Guadalupe. Information: (505) 983-2075.

June 11-Aug. 7. Taos: School of Music Summer Series. Events include concerts every Saturday beginning June 18 at Taos Community Auditorium; student concerts every other Friday from June 24 through Aug. 5 at the Hotel St. Bernard, Taos Ski Valley; seminars by the American String Quartet on Wednesdays, June 29, July 13, and July 27; and a piano recital by Robert McDonald, June 6, at the Taos Community Auditorium. Information: (505) 776-2388.

July 1-Aug. 27. Santa Fe: The Santa Fe Opera. The Mountain West's internationally famous summer opera festival. Noted for its fine stage settings. Information: Santa Fe Opera, P.O. Box 2408, Santa Fe, NM 87501. (505) 982-3851.

July 15-17. Dulce: Rodeo and Powwow. The 25th annual Little Beaver Round-up features a parade, all-Indian rodeo, Western and Indian dances, arts & crafts, carnival. Information: Jicarilla Apache Tribe, P.O. Box 313, Dulce, NM 87528. (505) 759-3242.

July 7-10. Santa Fe: 34th Annual Rodeo de Santa Fe. Parade, entertainment. Information: Santa Fe Convention and Visitors Bureau, P.O. Box 1928, Santa Fe, NM 87501. (505) 983-7317.

July 14. Cochiti Pueblo: Annual San Buenaventura Feast Day. Corn dance. Information: (505) 465-2244.

June 24. San Juan Pueblo: Annual San Juan Feast Day. Comanche dance. Information: (505) 852-4400.

July 8. Crownpoint: Navajo Rug Auction. Crownpoint Rug Weavers Association. 7 p.m. Crownpoint Elementary School. Information: (505) 786-5302.

July 16-17. San Ildefonso Pueblo: Arts and Crafts Show. Annual Northern Pueblo show and sale. Large, high-quality event now in its 11th year, with many tribes participating. Information: (505) 852-4283.

For all about Santa Fe and Taos, see
 November issue TRAVEL & LEISURE as
 published by AMERICAN EXPRESS COMPANY



**Sheraton-
Santa Fe Inn**

SHERATON HOTELS & INNS
WORLDWIDE
750 NORTH ST. FRANCIS DRIVE
SANTA FE, NEW MEXICO 505/982-5591

800-325-3535

IF YOU PREFER ... PHONE
YOUR RESERVATIONS TO THE
SHERATON ... BUT BE SURE
TO TELL ME TOO!

J.L.W.

SHUTTLE Schedule JACK

Scheduled limousine service between the
Albuquerque airport & downtown Santa Fe.

Leave Santa Fe downtown		Leave Albuquerque Airport	
5:30 A.M.	1:30 P.M.	7:30 A.M.	3:30 P.M.
7:30 A.M.	3:30 P.M.	9:30 A.M.	5:30 P.M.
9:30 A.M.	5:30 P.M.	12:00 Noon	8:00 P.M.
11:30 A.M.		2:00 P.M.	

Santa Fe pickups: Inn at Loretto: schedule • Hilton Inn: schedule plus 5 min.
 Reservations suggested to guarantee seating. Driving time 70 minutes.
 Shuttlejack, P.O. Box 5793, Santa Fe, NM 87501
 Complete charter and tour service, too.

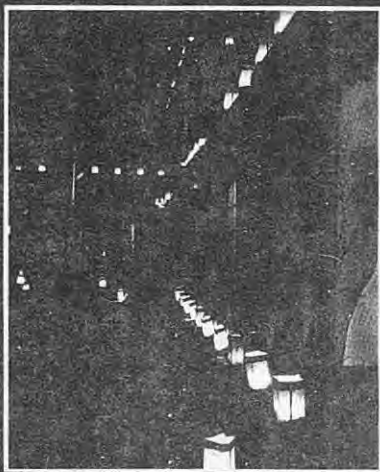
505-982-4311

AIRPORT TRANSPORTATION FROM ALBUQUERQUE
 TO SANTA FE
 \$15 per person one way

P.S.

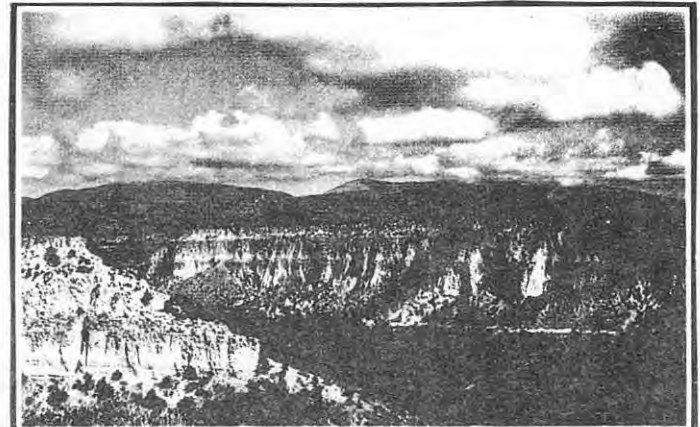
New Mexico North—

Santa Fe



Officially, *La Villa Real de la Santa Fe de San Francisco de Assisi* (The Royal City of the Holy Faith of St. Francis of Assisi), Santa Fe is the oldest city in the United States maintaining continuous cultural, commercial and political traditions since the beginning of the 17th Century. A center renowned for the performing arts, Santa Fe is also the home of major historical, anthropological and art museums.

Santa Fe was the most important overland trade center between the Eastern United States and the rest of North America from the 1820's until 1880 when the construction of the railroad resulted in the closing of the Santa Fe Trail. Santa Fe is one of the world's great architectural treasures, completely dominated by the Pueblo, Spanish Colonial and Territorial styles of adobe construction. During the winter holiday season *farolitos* (paper lanterns) are found on walls and rooftops throughout the Ancient City.



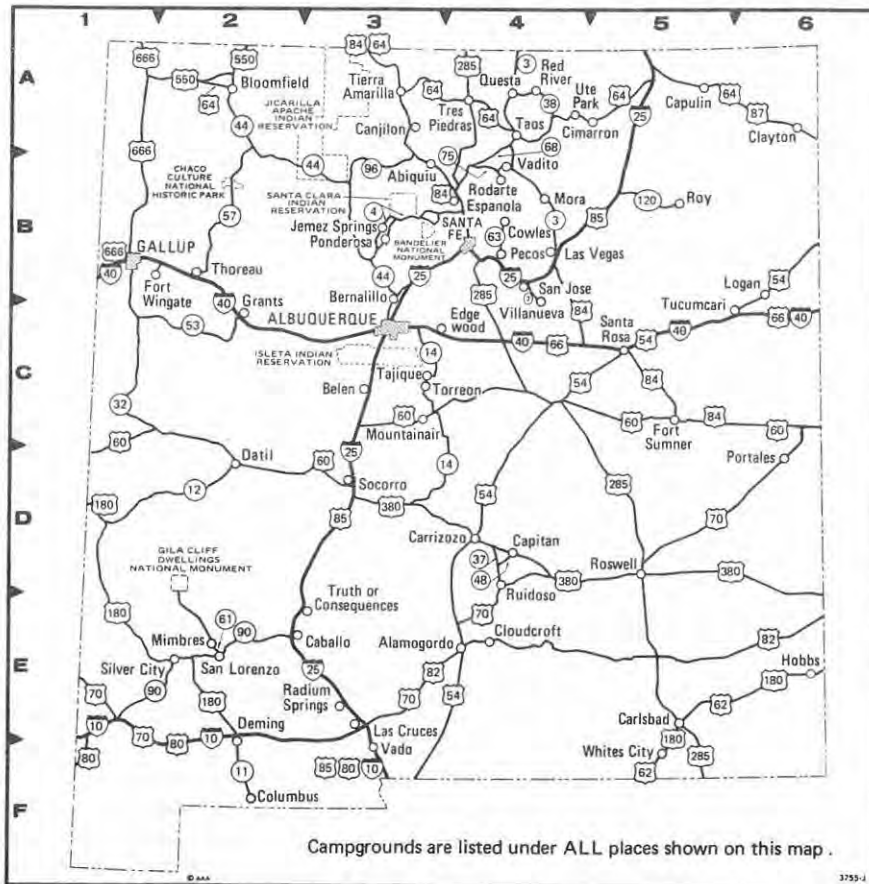
Los Alamos

Before the scientists of the Manhattan Project arrived here in 1942 to harness the awesome power of nuclear energy, Los Alamos was a boy's boarding school situated near an ancient Indian burial ground on a plateau overlooking the Rio Grande Valley.

Today the staff of the Los Alamos National Laboratory conducts some of the world's most sophisticated research and testing concerning high technology, including nuclear medicine, fiber optics, lasers and national defense projects. The laboratory has fascinating exhibits open to the public. Nearby at Bandelier National Monument are the reconstructed ruins of a large Indian pueblo whose descendants are among the residents of present-day Indian reservations in New Mexico North.

In the surrounding Jemez Mountains is the Valle Grande (huge valley), which is actually the caldera of a volcano that last erupted over 50,000 years ago. The pine, piñon and aspen covered mountain peaks are the rim of the old volcano.

New Mexico ABOUT CAMPING



Campgrounds are listed under ALL places shown on this map.

SANTA CLARA PUEBLO INDIAN RESERVATION (B-3)

Santa Clara Recreation Area 10 sites Open all year
 A/Y \$5.00
 9 mi sw on SR 5 to Puye Ruins from Santa Clara Pueblo; then 3 3/4 mi nw on BIA Rd 105. (Box 580, 87567) (7800') 76 acres. T/RV-10. Primitive sites. Pit toilets; no showers. Fee for: fishing. Pets. (Municipal) (505) 753-4247

SANTA FE 87501 (B-4)

Apache Canyon Campground (v) 85 sites Open 4/1-10/31 Rates Subject to Change
 4/1-10/31 \$5.50-7.50 for 2 ExPer \$8.85 EW-60 S-56
 14 mi n on I-25 exit 294, 1/2 mi s on Frontage Rd. (Rt 3 Box 95 A) (7000') 30 acres. T-25; RV-60. Some shaded, all pull-thru sites. A/C or heater, \$1.25. Wkly & monthly rates avail coin laundry; groceries & propane. Recreation rm; playground. Pets. (505) 982-1419

Aspen Basin 14 sites Open 5/15-10/31
 5/15-10/31 No Fee
 1/4 mi n on SR 22; 16 mi ne on SR 475. (10300') 5 acres. T-9; RV-5. No drinking water. RV limit: 16'. Pit toilets; no showers. 14 day stay limit. (NF) (505) 988-6322

Black Canyon 41 sites Open 5/15-10/31
 5/15-10/31 \$2.00
 1/4 mi n on SR 22, 7 1/2 mi ne on SR 475. (8400') 16 acres. T-10; T/RV-25; RV-6. RV limit: 32'. Disposal station. Pit toilets; no showers. Groceries. Riding. Pets. 14 day stay limit. (NF) (505) 988-6322

Camel Rock Campground (v) 83 sites Open 4/1-11/1 Rates Subject to Change
 4/1-11/1 \$8.00 for 2 ExPer \$1.00 EWS-63
 8 mi n on US 84 & 285. (Rt 5, Box 360-H) (7000') 17 acres. T-20; T/RV-63. A/C or heater, \$1.00. Coin laundry. Pets. (505) 455-2661

Hyde Memorial State Park 68 sites Open all year
 A/Y \$3.00
 12 mi ne on SR 475. (8300') 350 acres. T-53; RV-15. Attendant. Hospital in town. Disposal station. Pit toilets; no showers. Groceries. Ice skating; tobogganing; nature trails; playground. Pets. 14 day stay limit. (505) 827-2726

BANDELIER NATIONAL MONUMENT (B-3)

Juniper Campground 60 sites Open 3/15-10/31
 3/15-10/31 \$3.00 for Fam
 16 mi n of Santa Fe on US 64, 84 & 285, then 21 mi sw on SR 4. (Los Alamos, 87544) (6600') 12 acres. T/RV-60. Hospital in Los Alamos, 20 mi. RV limit: 21'. Disposal station. No showers. Nature trails; visitor center; Indian ruins. No pets on trails. 14 day stay limit. (NPS) (505) 672-3861

FAMILY HISTORIAN'S REPORT

MAYFLOWER FAMILIES, VOL. III George Soule

by Milton E. Terry

When Col. John and I published the Soule Book, we noted that it was not complete and that it undoubtedly contained errors; but to the best of our abilities we were putting into print all the genealogical elements we felt belonged to the five generations of the Pilgrim George Soule.

Certain persons, for whatever reasons, have printed papers challenging a number of the families linked to Pilgrim George by inference. Any field of study, including genealogy, which uses inferences, must admit to the possibility of error. Challenges to a particular inference are not only accepted but welcome. When, however, the challenges are written in a style that is mean and venaal, then the arguments become adversary in nature. In such cases, too often it is not the purpose of discovering truth, but to cause one or more of "the other side" discomfort and pain.

When the articles first started to appear and the writers were vocal in their glee, I was asked by officers of the Mayflower Society to refrain from published counter-attacks. I assured them that I had no intention of engaging in written insults; nor will I do so in articles written for our Newsletter.

As I start work on the rebuttal, I must face one sad fact: Donald L. Jacobus, Dr. Doane and Col. John Soule are all dead. Secondly, the correspondence files of the Kindred are no longer complete. Hence the conditions are not optimal for proper rebuttal. I do have one thing going for me: Col. John Edward Soule studied this family for more than thirty years, and he was an intelligent observer and scrupulously honest. Hence, I believe that history will prove him right in spirit if not correct to the actual letter in each case.

CASE 1: MARY HASKELL

Reference: Soule Family #50, page 37

Problem: There is land evidence in Plymouth which PROVES the parental relationship of all the known children of Patience Soule and her husband John Haskell, EXCEPT daughter Mary. It is known that Mary was born in Middleboro. It is known that a Mary Haskell married Scotto Clark in Rochester, but the proof of the parental relationship of Mary, wife of Scotto, is missing.

Background information available to us:

1. Our copy of FAMILIES OF THE PILGRIMS by Hubert Kinney Shaw was published in 1956. On page 143, dealing with the family of Patience Soule and John Haskell, is listed the daughter Mary with a Middleboro birthdate which is supported by vital records.

She is shown as marrying Scotto Clark in Rochester, with a footnote that this line was not approved by George E. Bowman, but that subsequently additional evidence had been offered to the Society and the line approved.

2. One of the last studies published by Donald L. Jacobus in THE AMERICAN GENEALOGIST in 1971 (reference TAB 47:6) was the genealogy of the Thomas Clark Family of Plymouth and Boston. On page 6 he lists Scotto Clark with wife Mary Haskell, daughter of Patience Soule and John Haskell. His references are simply the vital records of Middleboro and Rochester.

3. In the same year, 1971, Arthur and Katherine Radasch published their book on the Thomas Clark family which includes Scotto Clark and his descendants. Once again, the wife of Scotto Clark is listed as Mary, daughter of Patience Soule.

4. In September, 1982, I went to Barnstable and to the Sturgis Library and examined their notebooks on the Clark and Haskell families. The same attribution of parents is found there. In addition, I noted that there were two adult Haskells residing in Harwich with the first name Mark. I also noted that there was at least one other marriage of a Clark to a Haskell.

5. The first lineage accepted as a descendant of Pilgrim George Soule was from California in 1921 and the last one was in 1978. In passing, I note that the files in Plymouth are closed, and that these files were subject to fire damage. Four lineages were filed in 1921 and three in 1923 from California on this line for membership. Wisconsin, Georgia, Connecticut, and Illinois filed supplementals through 1947. In 1953-1954 two lineages were filed from Michigan for membership. These lineages predate the Shaw statement. Mrs. Thomas, Historian of the California Society, has furnished me a Xerox of the References in the first lineage. It contains in the handwriting of the Historian General that information from the "Roger Haskell" manuscript on the Haskells in the N.E.H.G.S. in Boston as of 1928 was acceptable as proof. Miss Anne Harding is now studying the manuscript collection of the Haskell Family Association at the N.E.H.G. Society. I do not know whether there is any information in the Bowman files, or whether Mr. Shaw left any notes which amplify his statement in FAMILIES OF THE PILGRIMS.

6. For the compiling of the George Soule book (M.F.3) the then Historian General kindly furnished Col. John with an essentially complete collection of the first 6 generations of every Soule lineage. Unfortunately, after the publication of the book, Col. John reduced his manuscript collection which was threatening to overflow his apartment and these copies no longer are in the correspondence file. But judging from the Reference information from California, he knew why this line had been accepted.

7. When I took over the task of finishing up the Haskells, I ordered a copy of the Radasch CLARK FAMILY as a basis for the

Clark Family. The reader will note that we acknowledged this dependency. When I had gone as far as I could go, I sent the rough manuscript to knowledgeable people specializing in Harwich and Barnstable and requested them to edit and scrutinize the Cape Families. This they did vigorously to our satisfaction.

After reading the background information above, the reader is faced with a decision: Shaw, Jacobus, Radasch, and John Soule inferred that the Mary Haskell who married Scotto Clark was the daughter of Patience Soule Haskell. Our adversary writers disagree.

At this time I do not know which group is correct, but I will accept the inference of the first group until more conclusive evidence is uncovered. Hopefully, the underlying documentation of the Haskell studies at Boston will resolve the problem once and for all. The professional approach by the General Society to this particular challenge leaves much to be desired.

(Ed. Note: Dr. Terry will continue this series in the April issue with the Elizabeth Soule-Francis Walker Family.)

Mrs. Lorraine White Ring writes that she is descended from George Soule through two lines. Her lineage:

- | | | | | |
|-------|--------------------------|---|-------------------|---|
| | 1. George Soule | m | Mary Beckett | |
| | | | ! | |
| | 2. George Soule | m | Deborah ? | |
| | | | ! | |
| ----- | | | | |
| ! | 3. Mary Soule | m | Joseph Deuel | ! |
| | | | ! | |
| | 4. Benjamin Deuel | m | Sarah Mosher | ! |
| | | | ! | |
| | 5. Joseph Deuel | m | Rachel Smith | ! |
| | | | ! | |
| | 6. Phoebe Deuel | m | John Allen | ! |
| | | | ! | |
| | 7. Rachel Allen | m | Hiram Pratt | ! |
| | | | ! | |
| | 8. Harriett Pratt | m | Ambrose Shepard | ! |
| | | | ! | |
| | 9. Minerva Shepard | m | 9. James L. White | ! |
| | | | ! | |
| ----- | | | | |
| | 10. Charles Abbott White | m | Margaret Kinner | |
| | | | ! | |
| | 11. Alburn Charles White | m | Nina R Lee | |
| | | | ! | |
| | 12. N Lorraine White | m | Dean E Ring | |

Lorraine's husband, Dean E. Ring is also a Mayflower Descendant of Stephen Hopkins.

MILESTONES

BIRTHS

Benjamin Daniel Mero, b. 30 Sept 1981, son of Dan Mero & Leslie Harrison Mero, 15th g-grandson of George Soule.

Brandy Cherie Harrison-Billings, b. 18 Jan 1982, daughter of Lisa Marie Harrison & Tressell Billings, 15th g-granddaughter of George Soule.

Sent in by Beverly Y. Harrison, Hayward, CA



MR. AND MRS. TIMOTHY D. FRENCH
(Diane K. Barnes) Libby Photo

Judith Elaine Johnston & Kenneth Robert Schlosser of Milwaukee exchanged marriage vows on Saturday, July 10, 1982 at Kenwood United Methodist Church in Milwaukee WI with Dr. Lincoln Hartford performing the ceremony. Parents of the couple are Mrs. Charles Simmons, Milwaukee and Mr. Andrew Johnston, Anaheim, CA, and James and Geraldine (Sowle) Schlosser, Milwaukee. (Ken is an 11th generation descendant of George-1 Soule, Nathaniel-2, Nathaniel-3, Wesson Sowle-4, James-5, Wesson-6, Hiram A.-7, Harvey M.-8, Claude R.-9, Geraldine-10).

From
Mrs. Charles (Anna) Barnes
8 Roland Street
Waterville, ME 04901

10 MORNINGSTAR
Monday, January 26, 1981

Diane Barnes Weds. Mr. French

OAKLAND — In a candlelight ceremony at the United Baptist Church Dec. 31, Diane Kendra Barnes and Timothy Deen French were united in marriage. The Rev. Elbert Brewster, chaplain of Mid-Maine Medical Center, performed the ceremony.

The bride is the daughter of Mr. and Mrs. Charles A. Barnes of 8 Roland St. She is the granddaughter of Mrs. Florence Curtis of Waterville and Mr. and Mrs. Alton Higgins of Bridgton.

The bridegroom is the son of Carrie J. French, 68 Countryside Traller Park. She hosted the rehearsal dinner along with Clifford Bolduc at the latter's home. He is the grandson of Mrs. Howard McDonald of Fillmore, Calif., and Charles B. French of Concord, Mass.

Julia Labbe was maid of honor. Michelle A. Barnes, cousin of the bride, was bridesmaid. Deborah E. and Susan A. Barnes, daughters of Mr. and Mrs. David Barnes, and cousins of the bride, were candle lighters. Lisa H. Barnes, daughter of Mr. and Mrs. Robert W. Barnes, and Deanna F. Barnes, daughter of Mr. and Mrs. David F. Barnes, and cousins of the bride, distributed 1st Corinthians Love Verse Scrolls. All mentioned above are from Waterville. Kerry Ann Higgins, daughter of Barry A. Higgins of Marlboro, Mass., and Carol Higgins of Fram-

ingham, Mass., and cousin of the bride, was flower girl.

Best man was Roger French of Veazie, brother of the bridegroom. Groomsman was Daniel C. Barnes of Waterville, brother of the bride. Ushers were Midshipman Bret Bernhardt of North Vassalboro and Maine Maritime Academy, Castine, and David Roy of Waterville. Ring bearer was F. Stephen Wood, son of Mr. and Mrs. William Wood of Oakland.

A reception followed in the vestry. Kim Kirk, Deborah and Susan Barnes, all of Waterville, were gift hostesses. Deanna F. and Lisa H. Barnes circulated the guest book. Mrs. Ralph MacKinnon of Dover N.H., and aunt of the bridegroom, cut and served the cake. Pouring were Mrs. Edwin Smith of Pittsfield, aunt of the bridegroom, and Ms. Linda Campbell of Marlboro, Mass.

The bride is a 1978 graduate of Waterville High School. She attends Kennebec Valley Vocational Technical School of Practical Nursing and will join her husband after graduation.

The bridegroom is a Waterville High School graduate stationed at Chanute Air Force Base, Ill., as an airman. He attends technical school there.

The couple honeymooned in Portland.

Bride is great granddaughter of Mabel Soule Higgins (deceased).

DEATHS

From Mrs. Dilma Poe Cox, 1411 Prospect Street, San Marcos, TX 78666:

My sister, Gladys Poe Walser passed away Dec. 27, 1981, in a Hamilton (TX) hospital. Was buried Dec. 29th. Services at Evant Funeral Home, Evant, TX. Burial at Hurst Ranch Cemetery, Hamilton County. She had lived most of her life in that vicinity. She was a daughter of N.H. Poe and granddaughter of Ellen Clifton Soules. She died at the age of 69 years & 5 days. She was married to Rev. Garland Walser, Baptist minister, was very active in her church. Children included a son & 3 daughters.

#####

From Frederic Gammons, 22 Lake Place, New Haven, CT 06511

Helen Soule Gammons died 20 June 1982 after a short illness.

#####

From John Bulau, 2052 E. Main St., A 305, Rochester, NY 14609

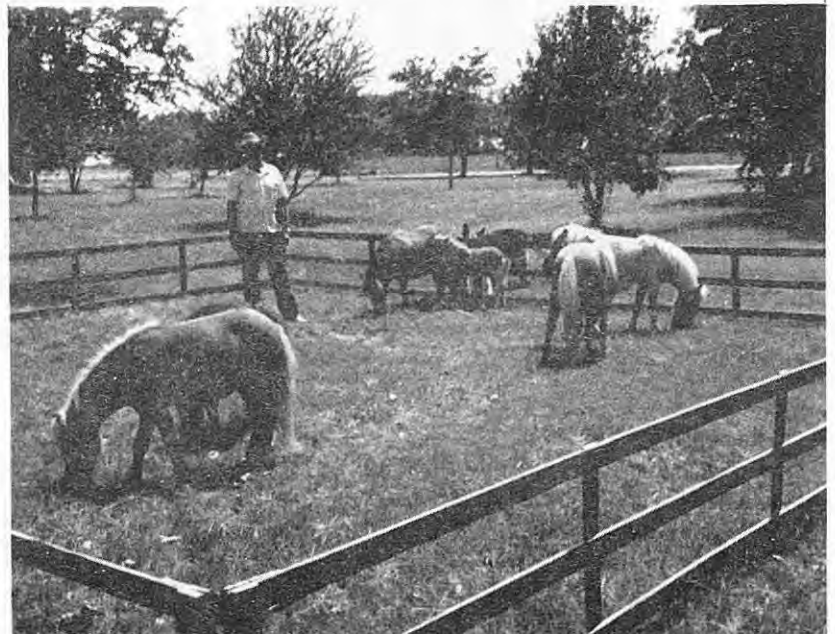
My wife, Margaret Soules Bulau, passed away Jan. 15, 1982. She had to have a triple bypass of the heart. Had to wait too long and didn't make it. (Mr. Bulau wants to keep up his wife's connection with Soule Kindred, and thinks he may have a Soule ancestry himself. See QUESTIONS AND ANSWERS.)

#####

MINIATURE HORSE HERD

Fred and Sibyl Soules of Lorena, Texas, Breeders of the miniature horse.

The miniature at one time was of the Shetland breed but the breeding has advanced to all breeds. This herd is a mixture of the Shetland and Quarter breeds. For registration, all the animals must be 34" or less in height. All the horses pictured are less than 34" tall and are all registered or subject to registration.



To give some perspective, Fred is 68" tall. Note his German Shepard is larger than some of the ponies. The small corral is 27" high. The smallest one was born the same date as Prince William, June 21, and as it is a little mare, it's name is LADY DI. Fred has three others that are not pictured. The horses range in value from 500.00 to 5,000

There is another breeder in Lorena area that has more expensive animals as they advertise more and are training the horses for shows and other related competitions.

SOULE KINDRED NEWS



Charles (Buddy) Sears

Buddy is a very talented song writer and singer. He has had his first record published this past month from Nashville through our local Central Recording Studio. His single is entitled "Kissing Teardrops" with "My Heart's Been Broken Before" on the flip side.

Bud has been playing guitar and singing almost from the time he was born, or so it seems to us, his family. His school bus driver once remarked it was always a pleasure when Bud got on the bus for they knew they would hear real music and not a jumble of stilted notes when he brought his small ocarina on that day of school band practice.

He has played locally in and around Middletown, Ohio for weddings, family gatherings, sales meetings, social clubs, etc. Last year, Bud played lead guitar for the "Steve Barrett Rhythm Band" around Cincinnati night clubs. His prime interest is song writing and recordings, and will release his records under the name "Buddy Carlisle"-- taken from his childhood home and school.

Bud is a 12th generation descendant of George Soule: George-1, John-2, Captain Joshua-3, Joseph-4, Joshua-5, James-6, Thomas H.-7, Ira D.-8, Sarah-9, Charles E.-10, Hazel Sears-11, Charles D.-12.

Contributed by Mrs. Charles (Christine) Semmler, 509 Britton Lane, Monroe, Ohio 45050

#####

Page 2

SPRINGFIELD PRESS

Wednesday, September 22, 1982

Soule To Speak

Jean Conder Soule, local author and writing teacher, will speak at the September 28 meeting of the Writers' Club of Delaware County at 10 a. m. in the Trevoze Federal Savings and Loan Bank, Garrett Road and Shadeland Avenues, Drexel Hill.

Following the business meeting conducted by club

president Patricia Brown, Mrs. Soule will present her program, titled "On The Flip Side." She will discuss light verse and greeting cards, presenting some of her own work in both areas, and showing members how to write them.

Mrs. Soule is the published author of six books for children and many stories, articles, and poems for adults and children which

have appeared in leading magazines and newspapers. She is a member of the teaching staff of the Institute of Children's Literature, Redding Ridge, Connecticut, a correspondence school which teaches adults how to write stories and books for children and teenagers.

An informal lunch will be served for members and guests. following the meeting.

Jean Conder Soule is the wife of George H. Soule. Readers may remember that her work has appeared in the Newsletter.

Contributed by George Standish Soule.

- #####
- # From Tomah (WI) Journal,
- # December 6, 1982.
- # Deborah's husband Brian is a
- # 12th generation descendant:
- # George-1, Nathaniel-2,
- # Nathaniel-3, Wesson Soule-4,
- # James-5, Wesson-6, Hiram
- # A.-7, Harvey H.-8, Harvey
- # Lanont-9, Kenneth-10, Harvey
- # (Buster)-11, Brian-12.

**Deborah Sowle
ass't. professor
in Colorado**

Deborah Bock Sowle, reference and serials librarian at Fort Lewis College since 1977, has been promoted to the rank of Assistant Professor.

Sowle received a BA degree in journalism from the University of Wisconsin, Madison, where she was awarded the Elsie Bullard Morrison scholarship as the outstanding senior in the U of W School of Journalism and where she was elected to Phi Beta Kappa.

She and her husband, Brian, a public school teacher, moved back to Colorado in 1976 and she worked in the Cortez school district as Title I aide for one year. The Sowles have a three-year-old daughter.

#####

Failure of 'Soule's Ditch' Left Its Mark on Kansas

By FORREST HINTZ
Staff Writer

For nearly a century, a series of man-made mounds north of U.S. 50 between Dodge City and Ingalls has marked the course of the most ambitious irrigation project ever undertaken in Kansas.

The Eureka Irrigation Canal, also known as "Soule's Ditch," was a failure, if not a swindle. But it also was at least partly responsible for the founding of a town, a college and three banks; the building and dismantling of a railroad; a shooting war over the county seat — and a hefty profit for the promoter.

The guiding genius was Asa Titus Soule, a New Yorker who made \$10 million selling "Hop Bitters," a concoction with enough alcohol to make one forget whatever was wrong.

Soule came to Kansas in 1883 at the request of John and George Gilbert, who were convinced that they could make the "Great American

Henry Beard, the foremost surveyor of that era, was hired as engineer. The actual digging began in 1884 and took 3½ years. It was done by 225 men using 360 horses and mules to move countless thousands of yards of dirt with slip scrapers.

AMID CONSIDERABLE pomp and ceremony, the water was turned into the canal in March 1880 and began disappearing into the sandy soil at an alarming rate. It took more than 24 hours for the water to move a mile — and until July to reach the other end. By that time, the crops had burned out and people had lost faith in the project.

Despite constant breaks, massive seepage losses and a host of other problems, the canal struggled along until 1890, when a diversion project in Colorado left the intake high and dry. Pumps were used for a time, but even those proved inadequate.

Soule had been hedging his bets, however. He figured he still had a chance if Ingalls became county seat of Gray County. Cimarron had a big edge, but the only other contender was Montezuma, and Soule decided to buy the town's votes. If Montezuma citizens would agree to vote solidly for Ingalls, he would build the Dodge City, Montezuma & Trinidad railroad. They did and he did.

He said he was going to drill gas and water wells at Ingalls, build a sugar plant and spend \$100,000 on public improvements.

SOULE DIDN'T want Cimarron to become a metropolis, so he began booming Dodge City to draw off any possible investments. He spent \$50,000 to build Soule College and a dormitory, gave it a \$10,000 endowment and turned it over to the Presbyterians. They went broke, the Methodists eventually took over — with the same luck — and the college finally became St. Mary of the Plains.

The promoter founded the National Bank at Dodge City and started others at Ingalls and Spearville. Then he hired a crew of gunslingers to intimidate Cimarron voters.

Article from
WICHITA EAGLE
June, 1982

But Cimarron won, and on Jan. 12, 1889, a shooting war broke out when an Ingalls contingent raided the town and stole the records. One Cimarron man was killed and three Ingalls men were wounded.

Two companies of militia were called out to keep the peace, and the court battles continued for two years. Ingalls got the decision and remained county seat until 1892, when it was returned to Cimarron.

THE DODGE City, Montezuma & Trinidad was abandoned, and the angry farmers literally carted off the whole thing. With nothing left, the Montezuma townsite was vacated in 1895. The present town 1½ miles away was built in 1912.

Soule died in 1893, and finally the Gray County battles came to an end. The Eureka Irrigation Canal faded into legend.

Much of the old ditch has been filled in now, but there still are places where one can stand in it and marvel at the incredible amount of work that was involved. Remains of two of the gates, their wooden parts long gone, still stand, reminders of a dream that failed.



Desert" burst into bloom. All they needed was water from the Arkansas River — and Soule's money to get that water where it was needed.

They envisioned a canal meandering 96 miles from the old Cimarron Crossing on the Santa Fe Trail to Coon Creek near Kinsley, irrigating 640,000 acres.

SOULE BUILT a town at the intake end of his canal and, because he was bankrolling the project, named it "Soule." He soon changed it to "Ingalls," however, to honor Sen. John Ingalls.

The company was incorporated at Spearville and issued \$1 million in stock. Soule took it all, bonded the company for \$1 million and, in 1887, sold the bonds at par in London, clearing a half-million-dollar profit.

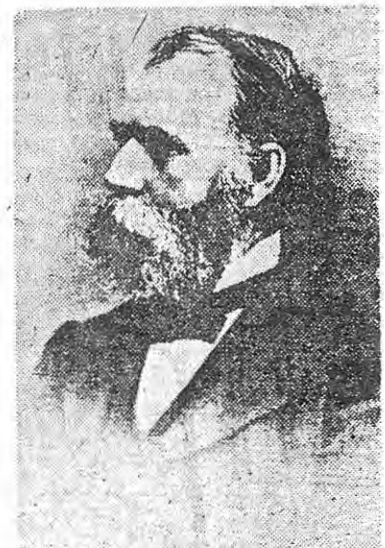


Photo Courtesy of Boot Hill Museum, Dodge City

TITUS SOULE
... "Guiding genius"

The following article appeared in KANSAS! Magazine, 1st issue/1982
(Quarterly publication of the Kansas Department of Economic Development)

The SOULE CANAL

Story and Photography by Tim Wenzl

AS one flies over southwest Kansas a distinct serpent-like scar zigzags across the rolling plains. The scar is the remnant of a very extensive irrigation system constructed by early Kansas pioneers.

Water has long been the concern of farmers in southwest Kansas. Today, the concern is the area's depreciating water table. In the late 19th Century, however, the major concern was how to utilize the torrent waters in the Arkansas River to aid the drought-stricken land.

In 1882, George and John Gilbert from Spearville developed an idea to put the waters to use. An irrigation canal was planned to provide moisture for the surrounding farmland. But the idea needed financial support. The Gilbert brothers were formerly from New York and knew of a wealthy man in Rochester who was always looking for a way to invest his money. Thus, Asa Titus Soule became involved in the project.

Asa T. Soule was a patent medicine millionaire. He was known worldwide as the "Hops Bitters King." Hops Bitters was an elixir with the express purpose to "cure what ails ya." The elixir, made with bitters, hops and alcohol, was a very popular medicine. With factories and stores in Rochester, New York; Toronto, Canada; London, England; Paris, France; Antwerp, Belgium, and Melbourne, Australia, Soule was quick to accumulate a fortune of between eight and ten million dollars from the sale of Hops Bitters.

Soule was soon sold on the investment possibilities of an irrigation

canal in Kansas, and, within months, came west to invest his fortune in the building of the canal.

Plans called for the canal to begin two miles west of what is now the town of Ingalls and to extend 96 miles to Coon Creek near Kinsley. Soule immediately started plans for the construction of the Eureka Irrigation Canal. An English engineer, Edward Beard, was hired to manage and build the canal.

Every available man in the area was put to work. The wages were \$1.50 a day per man and \$2.50 a day for a man with a team of horses. The canal was dug entirely by horse teams and plenty of hand labor. The canal was

The canal was dug entirely by horse teams and plenty of hand labor.

dug at an average of six feet deep with the base 28 feet wide and the top 48 feet wide.

The Eureka Canal was built between 1884 and 1885 at a cost of \$800,000. Despite plans to extend the canal to the Kinsley area the construction ended about 15 miles west near Spearville.

Farmers who owned land along the canal route were given the opportunity to purchase water rights. All one had to do to take advantage of the water was to dig laterals off the canal and pay a subscription of between \$1 and \$1.50 per year per acre. During the height of the canal's use, 500,000 acres benefitted from the irrigation waters.

Soule sold the stock in the canal company to a group of London

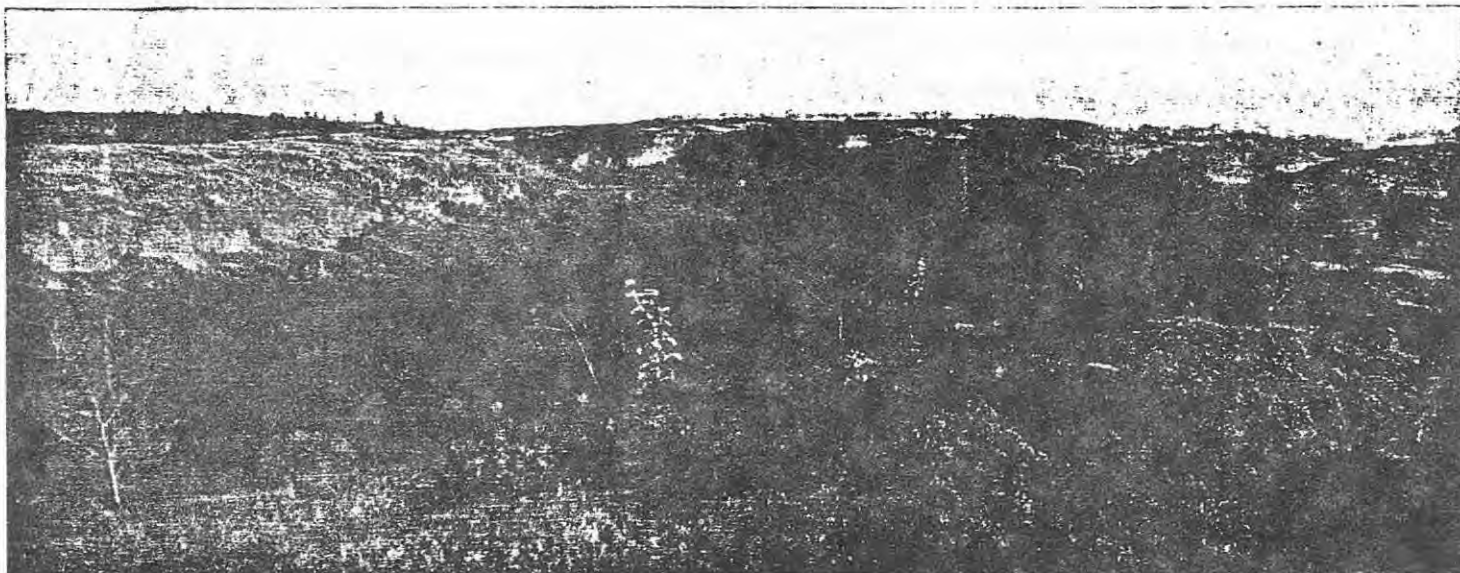
investors shortly after the canal was started for one million dollars in gold.

The canal was operated for five years. But, as with most big ideas, problems plagued the project. Seepage of canal water in the porous soil near the mouth of the ditch was a major problem. Two mammoth centrifugal pumps were used to throw water from the river into the canal but the seepage problems were never overcome.

The problem which finally ended the use of the irrigation canal actually originated in Colorado. In 1890, eastern Colorado farmers learned of the benefits of irrigation so that much of the water in the Arkansas River was utilized for Colorado farmland and never reached Kansas. The Kansas irrigation company took the matter to court when there was no more water to feed the canal. The courts ruled that Colorado had prior rights to the water since the river originated in that state.

Several times in the 1930's serious consideration was given to reviving the canal. By then, however, roads crossed the canal's route at almost every mile so that re-establishing the canal would require the construction of many bridges. This cost made the reviving of the irrigation project unfeasible. Today, the remnants of the ditch appear as severed ravines.

Soule built a college which bore his name in Dodge City. This institution was not a successful venture and failed soon after his death in 1893. Today, the streets "Soule" in Dodge City and "Canal" in Cimarron, are the only reminders of the man who came to southwest Kansas to make it "bloom like a rose." □



A depression in the earth near Dodge City is all that remains of Asa T. Soule's Eureka Canal which was built between 1884 and 1885.

The letter reproduced below (with a transcription by your editor for easier reading) was sent in by Virginia Soule Abernathy, R.R.1, 430 A. Apt.9, Norwich, VT 05055. She writes: This may be of some value to anyone who knew the Lizzie Soule referred to by the writer....."Lizzie" was probably Elizabeth. The reference to "what was called the North Academy" I believe later became Brigham Academy. (Peter Bent Brigham and his sister left an endowment to this school.) The original letter was found among Soule papers.

Newtonville, Mass.

July 20, 1898.

Mr B. L. Soule

Dear Sir,

A number of years ago, I was in Bakersfield at school, in what was then called the North Academy. Prof. Moore was the teacher and I boarded at his home and had for a room mate Lizzie Soule, one of the best girls I ever knew. We used

to write often to each other after we left the school. Her family moved to Geneseo Illinois but I heard from her from time for a long time when the dear letters stopped coming and I never could find out what became of her. I have received a catalogue from the Brigham Academy, where I have found your name and so have written to you to ask you

Newtonville, Mass.

July 20, 1898

Mr. B. L. Soule

Dear Sir,

A number of years ago, I was in Bakersfield at school, in what was then called the North Academy. Prof. Moore was the teacher and I boarded at his home and had for a room mate Lizzie Soule, one of the best girls I ever knew. We used to write often to each other after we left the school. Her family moved to Geneseo Illinois but I heard from her from there for a long time. Then the dear letters stopped coming and I never could find out what became of her. I have received a catalogue from the Brigham Academy, where I have found your name and so have written to you to ask you if you know what became of Lizzie Soule. I will be very glad and very much obliged if you will answer this and tell me what you can about her.

Direct to

Mrs. C. H. DeLano

171 Highland Avenue
Newtonville, Mass.

if you know what became of Lizzie Soule. I will be very glad and very much obliged if you will answer this and tell me what you can about her.

Direct to

Mrs C. H. DeLano

171 Highland Avenue

Newtonville

Mass.

QUESTIONS AND ANSWERS

From Margaret Stelzer Sherman, Rt. #1, Box 287, Gerald, MD 63037

I am researching Soule-Soule. My 4th gr-grandfather John Baker b. 1765 MA m. Mary Sowle 1791 Dartmouth MA records. Both lived in Freetown, MA. Mary's father Joseph Sowle b. 1733 wife Elizabeth Tallman m. 1763. Joseph's father Wm. Soule b. 1692. Mary Sowle & John Baker's children: Jonathan, Benjamin, MARY, Sayer. MARY m. Shubel Symonds in Locke NY 1815. I need death info on John Baker, Benj. Baker, and Jonathan Baker. Also death info on Mary Sowle and Joseph Sowle. They moved to New York from MA and I believe died Cayuga Co. NY.

(Ed. note: Joseph is listed as #543, p. 228 in Mayflower Fam. 3.)

From Ms. Gerry Myers, 1115 Ashley Drive, Kalamazoo, MI 49001.

In reply to querie of Mrs. Floyd Soule, Jr. in October 1982 Newsletter: Lineage accepted by the Mayflower Society:

MAYFLOWER #		WIFE
31,852	George Soule	Mary Buckett/Becket
31,853	George Soule	Deborah ?
32,056	William Soule	Hannah ? (maybe Brewster)
31,854	George Soule	Lydia Howland
31,784	Benjamin Soule	1-Abigail Howland
31,886	Issac Soule	Abigal Porter

My line happens to come from Issac and Abigal's son Issac. The second Issac married Cynthia Carter.....I am wondering if your husband descended from Issac and Cynthia as they also had a son Issac who married 1-Hannah Porter-1849, 2-Anna Hartman-1859. My records show he died March 8, 1896, Wahoo, Sanders Co. Nebraska.

From John Bulau, 2052 E. Main St., A305, Rochester, NY 14609.

I am an S.A.R. by way of my great, great, great grandfather James Morrison, who was in Washington's Army at Valley Forge and lived in Iron Works area of Philadelphia....It has come to light that my great, great grandfather Morrison married a Northrop whose name appears may be a Soule descendant. It has also come to my attention that an Elder John Strong is a Soule descendant, and my grandfather was a Strong, so there are two possibilities. I am quite new at checking these things out....I would very much appreciate any help.

There will be a second reunion of descendants of Sowles who migrated from Vermont to Wisconsin (also western New York and Iowa) in the mid-1800's, on SATURDAY, AUGUST 6, 1983 in Tomah, WI. This includes descendants of the sons of JAMES-5 and PATIENCE MACOMBER SOWLE of Danby, VT: WILLIAM, WESSON, GARDNER and JAMES. To receive complete information about the reunion write Mrs. Geraldine Schlosser, 3060 N. Hackett Avenue, Milwaukee, WI 53211, and include a stamped addressed envelope.

INDEX OF MAINE VITAL RECORDS - SOULE

(Continued from Volume XVI, No.4, October, 1982)

- 13 -

John O	1925?	Turner	93
Jonathan	1800	Nova Scotia	18
Jonathan	1800	u	67
Jonathan	1804	Cousins Island	36,65
Jonathan G	1848	Waterville	11
Joseph	1790	Woolwich	36
Joseph	1810	Freeport	18
Joseph	1896	Alna	12
Joseph Henry	1883	Portland	63
Joseph Henry	1913	Falmouth	63
Joseph A P	1870	So Portland	10
Joseph A P	1872	Cape Elizabeth	79
Joseph A.P.	1869	Deering	19
Joseph A.P.	1870	Portland	36
Joseph B	1835	Yarmouth	18
Joseph D	1890	Lewiston	41
Joseph H	1870	Portland	20
Joseph H	1880	Maine	39
Joseph Henry	1873	Portland	81
Joseph L	1837	Searsmont	18
Joseph L	1846	u	11
Joseph P	1875	Cape Elizabeth	77
Joseph R	1845	Alna	97
Josephine	1835	Sidney	55
Joshua	1800	u	36
Joshua	1810	Freeport	41, 51, 55
Joshua	1824	Livermore Falls	12
Joshua	1825	Avon	32
Joshua	1825	Freeport	91
Joshua	1835	Philips	64
Joshua	1900	Wild	94a
Joshua C	1820	Freeport	36
Josiah	1820	Cousins Isle	91
Josiah	1825	Waterville	85
Josiah	1827	u	20
Josiah	1839	Oakland	67
Judson Pearl	1906	Woolwich	39
Julia E[]	1854	Richmond	84
Julia W	1843	Yarmouth	30
Julius Albert	1911	Freeport	56
Julius S	1842	Freeport	96
Julius S	1860	Freeport	46
Julius S	1860	Freeport	70
Karl	1904	Gorham	34
Katherine M	1862	Woolwich	51
Kenneth	1899	Skowhegan	19
Kenneth A	1911	Woolwich	56
Kenneth Donald	1929	Waterville	99
Kenneth Douglas	1910	Wicaset	53
Lafayette	1855	Freeport	52
Laurence P	1896	Freeport	83, 87, 92, 94
Laurence Porter	1894	Freeport	4
Laurence Porter	1923	Freeport	87
Laurence W	1909	Palermo	49

- 14 -

Laurence William	1925	Portland	92
Lauretta	1898	Buxton	16
Lawrence Porter	1895	Freeport	76
Leander	1893	Oakland	2
Leander	1907?	Freeport	45
Leland	1885	Freeport	63
Leland S	1895	Freeport	76
Leland Sumner	1889	Freeport	57
Lemuel	1903	Groveton	102
Lemuel H	1835	Woolwich	58
Lemuel L	1902	Groveton	94
Lemuel Louis	1903	Groveton	95
Lena W[]	1866	New Portland	30
Lenden W	1865	u	50
Lendon W	1855	Jefferson	45
Lendon W	1868	Jefferson	3
Leon L	1904	Freeport	34
Leonard C	1873	Yarmouth	33
Leonard G	1850	Freeport	33
Leslie	1890	Woolwich	73
Leslie D	1877	Rangeley	25
Leslie E	1892	Woolwich	80
Leslie E	1898	Woolwich	99
Leslie Edwin	1893	Woolwich	1
Leslie J	1872	Rangeley	23

Lester Edwin	1893	Woolwich	60
Lester Lee	1922	Westbrook	85
Leta E	1880	Freeport	69
Lettie M	1869	Palmyra	65
Leuman	1873	Monmouth	10
Levi	1795	Waldoboro	8
Lewis	1840	Woolwich	95
Lewis Edward	1924	Augusta	90
Lewis J	1840	Woolwich	29, 51
Lewis J	1842	Woolwich	28
Lewis J	1896?	Woolwich	12
Lewis P	1855	Freeport	1, 106
Lewis P	1870	Freeport	6
Lillian	1903	Bath	31, 33
Lillian Emma	1893	Portland	1
Lillian Mary	1920	Lewiston	80
Linman A	1874	Yarmouth	7
Lois J	1918	Auburn	75
Lona M	1897	Searsmont	13, 14
Lorenzo	1894	Palermo	4
Lorenzo A	1850	Palermmo	7, 69
Lorenzo A	1894	Learsmont	4
Lorind Kendrick	1887	Woolwich	54
Loring H	1890	Woolwich	70
Loring K	1885	Woolwich	56, 63
Lottie E[]	1873	Skowhegan	24
Louisa	1822	Greenbush	45
Louise Benson	1879	Freeport	24
Louise Francis	1930	Biddeford	102

- 15 -

Louise H[]	1825	Bowdoin	21
Louise L.B	1906	Cumberland	39
Louise Marion	1900	Portland	22
Lucille Grace	1920	Freeport	81
Lucy A	1823	Waldoboro	47
Lucy Ann	1835	Leeds	42
Lucy J	1839	Norridgewock	61
Luella[]	1858	Freeport	94a
Lula[]	1853	u	103
Lydia G[]	1841	Palmyra	103
Mabel G	1886	Auburn	2
Madison	1815	Waterville	72
Madison	1820	ME	94
Mahala P	1822	Freeport	42
Mahala P	1851	Freeport	96
Malcolm M	1884	Freeport	68
Malcolm M	1895	Freeport	87
Malcolm M	1916	Wayne	87
Margaret	1837	Freeport	42
Margaret	1901	Unity	25
Margaret C[]	1903?	Freeport	33
Margaret E[]	1869	Biddeford	14
Margaret G	1829	Farmingdale	2
Marguereta Clare	1894	Freeport	3
Marquerite Elizabeth	1927	Waldoboro	95
Maria A	1825	Freeport	100
Mariah B[]	1841	Portland	89
Marilyn Louise	1930	Oakland	102
Marion Josephine	1895	u	5
Marion P	1908	Freeport	46
Marion S	1901	Belfast	25
Marjorie Idella	1922	Oxford	85
Marjorie Louise	1931	Springvale	105
Marshal N	1901	Waterville	26
Martha A	1836	Lisbon	47
Martha Azelia	1893	Freeport	1
Martha J[]	1841	Washington	91
Mary	1889	Ireland	61
Mary A	1868	Peabody Ma	52
Mary A	1910	Woolwich	53
Mary A[]	1931?	NB	106
Mary Arvella	1840	Phillips	38
Mary Arvill	1912	Buxton	59
Mary B[]	1843	Phillips	87
Mary D[]	1841	Freeport	89
Mary E	1846	Gouldsboro	61
Mary E	1850	Augusta	81
Mary Elizabeth	1921	Lewiston	83
Mary Elizabeth	1925	Houlton	92
Mary Ellen[]	1838	Bradford	104
Mary Emily[]	18~9	93	
Mary H	1894	Somerville	3
Mary H	1895	Somerville	9
Mary J	1873	Chatham	55

- 16 -

Mary J[]	1828	Waterville	27
Mary Louise	1928	Bath	97
Mary P	1851	Freeport	61
Mary S	1848	Peabody Ma	42
Maud E[]	1877	Searsmont	18
Maurice C	1900	Yarmouth	89
Maurice Cleaves	1923	Yarmouth	87
May M	1845	Lincolnville	45
Maynard Franklin	1909	Portland	49
Maynard P	1903	Freedom	97,99,102
Maynard Perley	1910	Freedom	53
Medora Adelaide	1929	Rumford	99
Melvin Osborn	1874	Freeport	69
Melvin Q	1874	Freeport	8,19
Mercy	1896	Palermo	12
Mercy E[]	1845	Portland	107
Merton C	1902	Yarmouth	92
Merton E	1885	Bridgton	89
Merton L	1890	Yarmouth	88
Merton L	19267	Yarmouth	94a
Merton Lovell	1924	Portland	90
Merton Lovell Yarmouth		1902	
Micah	1790	u	52
Micah	1816	Oakland	52
Mildred Arline	1898	Livermore	16
Mildred Elvena	1901	Rangeley	25
Mildred Grace	1904	Freeport	34
Mildred Huston	1903	Portland	31
Mildred Isabel	1928	Lewiston	97
Mildred Madolyn	1918	Augusta	75
Mildred Vannah	1888	Damariscotta	69
Millard	1871	Belgrade	16,35
Millard	1880	Belgrade	39,100
Millard	1885	Belgrade	80
Morrice F	1893	E Pepperell Ma	14
Morton C	1899	Deering	77
Morton Clark	1899	Deering	19
Morton Clark	1900	Portland	87
Myra L[]	1852	Phillips	91
Nancie S	1847	Augusta	74
Nancy	1849	Auburn	61
Nancy Hope	1925	Portland	92
Nathan	1810	Waldoboro	14,48
Nathan	1838	Waldoboro	107
Nathan	1845	Waldoboro	104
Nathan B	1834	Waldoboro	48
Nathan B	1850	Waldoboro	64,93
Nathaniel G	1904	Marshville	97
Nellie	1912	Waterville	60
Nellie Ernestine	1909	Lewiston	49
Nellie F	1888	Auburn	2
Nelson Safford	1920	Nobleboro	80
Nora I	1910	Oakland	53
Norman	1901	Plymouth	25

- 17 -

Norman Clifford	1897	Plymouth	86
Norman P	1857	Augusta	42
Norman P	1860	Freeport	10
Norman P	1870	Freeport	6,73
Olive Belle	1910	u	53
Olive May	1905	Augusta	37
Olive[]	1857	Canaan	101
Oran M	1871	Freeport	11
Orin L	1842	Palmyra	81
Orinda H[]	1846	Canton	91
Orintha H[]	1839	Chebeague Isle	107
Ossian Mayo	1893	Pittsfield	1,69
Paris	1840	Oakland	16,103
Peletiah	1810	u	41
Peletiah	1820	Duxbury MA	7,94
Perez	1825	Pownal	21
Perley	1885	Palermo	53
Perley C	193177	Palermo	
Perley Cleveland	1885	Palermo	35,97
Perley E	1900	Etna	92
Philip K	1896	Freeport	76
Philip N	1895	Freeport	78
Philmond	19297	Boston	MA7101
Porter F	1870	Waterville	3
Porter H	1869	Waterville	26
Porter Hall	1869	Waterville	2

Ralph	1850	Freeport	91
Ralph	1870	Freeport	10
Ralph E	1868	Oakland	37,39
Ralph E	1882	Oakland	105
Ralph Ernest	1868	Oakland	96
Ralph H/L	1878	Buxton	23
Ralph L	1880	Buxton	28
Ralph L	1887	Buxton	73
Ralph P	1896	Deering	10
Ralph Polister	1897	Deering	79,80
Ralph Polister	1902	Portland	92
Ralph Polister	1920	Portland	80
Raymond C	1880	Freeport	34
Raymond L	1882	Freeport	26
Redington M	1905	Waterville	37
Reuben	1821	u	21
Reuben	1822	ME	90
Reuel Blaine	1893	Presque Isle	79
Richard P	1833	Newburyport MA	85
Robert	1872	Elizabeth NJ	91
Robert	1898	Livermore Falls	83
Robert Edward	1903	Mechanic Falls	84
Robert H	1893	So Portland	3
Robert Larson	1923	Bath	87
Robert S	1807	Cumberland	9
Robert Walter	1926	Portland	94
Roberta Helen	1921	Lisbon Falls	83
Roderique Francies	1895	So Freeport	5

- 18 -

Roland	1868	Phillips	10
Rose Emma[]	19277	Waterville	96
Rose Marie E	1918	Livermore Falls	75
Rosemary Elizabeth	1918	Livermore Falls	77
Roy	1900	Wiscasset	87
Royden	1903	Wicasset	31
Ruel B	1900	Presque Isle	88
Rufus	1780	Cumberland	9
Rufus	1780	Freeport	14
Rufus	1815	Freeport	30
Rufus	1818	Palmyra	81
Rufus	1845	Chebeague Is	86
Rufus A	1847	Chebeague	32
Rufus Albertson	1862	Mattapoisett Ma	35,36
Rufus Albertson	1877	New Bedford Ma	35
Rufus C	1820	Chebeague	36
Rufus C	1832	Freeport	79
Rufus Cushing	1819	Freeport	14
Rupert	1877	Phillips	26,28
Rupert D	1885	Strong	103
Rupert F	1877	Phillips	26
Russell Franklin	1923	Portland	87
Ruth	1900	Bath	24
Ruth P	1894	So Portland	3
S Maude	1855	Rangeley	101
S.K.	1880	Mars Hill	34
Samuel	1800	Freeport	15
Samuel	1810	Woolwich	79
Samuel	1850	Freeport	8
Samuel	1894	Palermo	4
Samuel D	1870	Woolwich	3
Samuel Dodge	1868	Gardiner	2
Samuel H	1825	Freeport	79,95,100
Samuel H	1838	u	16
Samuel Holbrook	1822	Freeport	15
Samuel John	1920	Wiscasset	80
Samuel K	1875	Bayville	17
Samuel K	1878	Caribou	97
Samuel S	1870	Waldoboro	93,104
Samuel W	1850	Phillips	8
Sarah G[]	1852	Freeport	96
Sarah Helen[]	1843	Portland	89
Sarah J[]	1837	Dresden	79
Sarah[]	1822	Augusta	30
Sarah[]	1838	E	Orrington74
Selden R.	19027	Skowhegan	30
Seth H	1880	Buxton	34
Sidney S	1853	Freeport	101
Sidney S	1855	Freeport	24
Silas M	1840	Woolwich	2
Stanley	1899	Palermo	98
Stanley J	1899	Palermo	19,99
Stanwood T	1858	Freeport	79
Sumner	1880	Oakland	73

Sumner	1893	u	2				
Sumner C	1865	Freeport	73	William A	1858	Freeport	94a
Susan Ann	1845	Brownfield	37	William A	1863	Damariscotta	107
Susan P[]	1842	Freeport	101	William A	1865	Hartland	81, 82
Susan[]	1808	Freeport	24	William A	1870	Waldoboro	78
Sylvia E	1929	Sanford	99	William A	1894	Freeport	4
Thanet F	1895	Corinth	78, 85	William Alfred	1895	Portland	5
Thanet Francis	1897	Corinth	13	William Alfred	1902	Portland	90
Thanet I	1898	Corinth	90	William Alfred	1924	Portland	90
Timothy B	1821	u	9	William Alpheus	1888	Freeport	105
Timothy D	1790	Freeport	9	William Alpheus	1912	Freeport	105
Timothy D	1820	Yarmouth	30	William D	1852	Turner	26
Valorie Jean	1930	Portland	102	William D	1929?	Turner	101
Velma	1920	Augusta	80	William E	1825	Augusta	81
Velma A	1920	Augusta	85	William E	1886	Yarmouth	35
Verna M	1896	Auburn	10	William F	1827	Freeport	89
Vernon A	1899	Augusta	98	William F	1840	Freeport	91
Vernon P	1898	Augusta	16	William F	1855	Augusta	82
Victoria E. J.	1904	Palermo	34	William G	1875	Waldoboro	1
Virginia N	1917	Nobleboro	73	William G	1879	Augusta	38
Virginia[]	1838	NY	81	William H	1830	Portland	15
W. Stanwood	1899	Freeport	19	William H	1844	Yarmouth	91
W.F.	1800	Freeport	89	William H	1845	Yarmouth	20
W.P.	1873	LaGrange	13	William H	1855	Yarmouth	36
W.S.	1873	Freeport	13	William H	1875	Philips	16, 31
Waldo N	1897	Freeport	81	William H	1880	Portland	98
Waldo Wilson	1897	Freeport	16, 77	William Henry	1850	Yarmouth	81
Wallace	1852	Grand Fall	20	William Howard	1868	Philips	8
Wallace H	1865	Freeport	3	William J	1849	Auburn	32
Wallace H	1897	Freeport	13	William N	1819	Augusta	18, 74
Wallace Henry	1875	Freeport	84	William N	1830	Augusta	82
Walter Morton	1920	Westbrook	80	William P	1886	Freeport	35
Warren Stanwood	1874	Freeport	12	William T	1848	Brockton MA?	98
Washington	1812	Freeport	86	William W	1852	Grand Falls	85
Washington	1820	Pownal	27	William W	1877	Sidney	26
Washington	1899?	Freeport	20	William W	1900	Waterville	23
Weston F	1870	Fairfield	8	Willis Allen	1921	Freeport	83
Weston F	1871	Presque Isle	74	Willis Garland	1926	Augusta	94
Weston F	1896	Presque Isle	76	Willis H	1894	Freeport	4
Weston F	1900	Presque Isle	90	Willis Harwood	1870	Freeport	76
William	1800	Freeport	100	Willis M	1849	u	96
William	1820	Freeport		Willis M	1854	Pownal	21
William	1820	Skowhegan	9	Willis Maurice	1905	Searsmont	39
William	1823	Middleboro MA	98	Willis P	1874	La Grange	8
William	1835	ME	81	Winfield Alton	1901	Wicaset	25
William	1840	Garland	106	Winnifred Elaine	1929	Waterville	99
William	1840	ME	82	Yvonne Madeleine	1924	Augusta	90
William	1845	u	29	dau	1924	Winslow	90
William	1858	Rangeley	38				
William	1874	Palermo	98				
William	1876	Rangeley	20				
William	1902?	Skowhegan	30				
William A	1833	Carmel	75				
William A	1850	Freeport	29				

This concludes the Index of Maine Vital Records--Soule from their beginning to 1914. A complete copy of these records is in the Soule Kindred Files. For information from the records, contact Historian Milton Terry, 381 Creek Bed Rd., Mountainside, NJ

#####

FAMILY DATA FORM

The Soule Kindred Family Data Form is again included for you to complete. There have been some minor changes made to make it easier for a female descendant to fill out, or one whose descent is mostly through female lines. Please take the time to help up-date the Kindred files from the 6th generation to the present. Send completed forms to our Historian:

Dr. Milton Terry
381 Creek Bed Road
Mountainside, NJ 07092

MEET YOUR OFFICERS

DANIEL NELSON PEARCE - Board Member - Class of 1983

Dan was born 30 December 1904 in Montclair, New Jersey. He graduated from New York University, School of Commerce in 1926. He earned his way through college with part time employment and received a scholarship during the last two years for work in Dramatic Arts.

He was employed by the Western Electric Company, Inc., for over 39 years and retired in 1965 having served in personnel, production, operating, inspection and results. During the second World War he was responsible for production of radar equipment for the British and American forces.

On May 13, 1937 he was married to Mabel Woodruff German, a graduate of New Jersey College, a music supervisor, singer and artist.

They have three children; Marilyn Harder, a teacher and at present Secretary and Registrar at Union College in Poughkeepsie, New York. Dan, Jr., is Ass't Principal of the Marshfield High School, and David is a minister and the Director of Health Services at Pilgrim Place in Claremont, California.

The Pearces have been active in Scouting and in Community projects too numerous to mention. In 1969 Dan and Mib moved to Duxbury and have participated in church work, adult education and in the preservation and maintenance of Historical buildings including the First Parish Church, the John Alden House, Gershom Bradford, the King Caesar and Drew Houses in Duxbury, and the Edward Winslow House in Plymouth.

Dan is a former President of the Alden Kindred of America and has served as Chairman of the Physical Properties Committee for his church, the Duxbury Rural and Historical Society and the Alden Kindred. He is a member of the National Gavel Society, Telephone Pioneers, Plimoth Plantation and the Society of Mayflower Descendants. His interests include swimming, boating, fishing, reading and most of all, his children and six grandchildren. He has been a member of the Soule Kindred since 1976.

Lineage

1. George Soule m Mary Becket
2. George Soule m Debora ()
3. Nathan Soule m Mary Gifford
4. Cornelius Soule m Sarah Dennis
5. Abner Soule m Dorcas Seabury
6. John Tompkins m Comfort Seabury Soule
7. Thomas Pearce m Eliphah Tompkins
8. Abner Thomas Pearce m Sarah Reid Briggs
9. Franklin Irving Pearce m Sarah Amelia Vaughn
10. Robert Thomas Pearce m Flora Helen Nelson
11. Daniel Nelson Pearce m Mabel Woodruff German



Mib and Dan Pearce

MEET YOUR OFFICERS

OPAL SOULE MANLY - Board Member - Class of 1983

I was born in Warren County, Pa. on February 24, 1902. The fourth child of Frank C. and Charlotte B. Soule. We lived there until I was about 3 years old.

Father moved us to Indiana where we lived for 3 or 4 years, moving on to Oklahoma when I was 6½ years old. Father was a Constructing Engineer in the oil fields, installing the machinery for pumping oil. He worked doing this until his death in 1928.

My brother, 2 sisters and I attended Nowata, Oklahoma schools, all graduating from the same high school. All our family were members of the First Christian Church, we girls being active in Sunday school work.

In 1927 I married Louis J. Manly of St. Louis, Mo. Going with him into outdoor show business. We went from carnivals to circuses, making Los Angeles, California our headquarters.

In the winter months we worked theaters and worked in motion pictures. We traveled from coast to coast- border to border taking a break in 1930 with a trip to Hawaii. We returned to Los Angeles to make our permanent home there. In 1933 we started working at the beach in Long Beach, California, working there week-ends for 18 years. Leaving there we worked special circus shows for the West Coast Optimist Clubs. Retiring in 1959 when my husband became ill. He passed away on November 25, 1959.

We both had been active in the Pacific Coast Showmen's Association. I was President of the Ladies Auxiliary in 1951, later becoming Chaplin and have continued to be.

I attended my first "Soule Kindred" meeting in 1976, in Philadelphia at the home of my nephew George Soule.

MY LINEAGE

1. George Soule m. Mary Becket, 2. George Soule m. Deborah, 3. William Soule m. Hannah, 4. George Soule m. Lydia Howland, 5. Benjamin Soule m. Abigail Houland, 6. Ebenezer Soule m. Mercy Foote, 7. Isaac Soule m. Leah Brownell, 8. Peter Jacob Soule m. Eliza Ann Cheney, 9. Frank Clinton Soule m. Charlotte Belle Miller, 10. Opal Soule m. Louis J. Manly.



THANKSGIVING DAY
1982

Index for Soule Kindred Newsletter

Vol. XVI

Published Quarterly

Jan. (No. 1) April (No. 2) July (No 3) & Oct. (No. 4)

Name	Issue No.	Page		
Abernathy, Virginia Soule	2	66		
Adams, Mable	1	25		
Alden, David	1	10		
" John	1	13, 15, 70		
" Lucy	1	8		
" Mary (Southworth)	1	10		
Allen, John	3	113		
" Rachel	3	113		
" Sarah	4	137, 145		
Allerton, Isaac	2	70		
Aloyse, Sister	4	133		
Alton, John Jacobs	1	25		
" Fannie Esther Gates	1	25		
Amsler, Bethany Renee	4	155		
Angler, Rhoda B.	2	46		
" Samuel	2	46		
Arthur, Alice E.	4	148		
" Alice Etile	2	64		
Awalt, Sarah	3	101		
Ayers, Adward (Edward)	1	4		
" Cathy	4	4		
" David	4	4		
" Elisa Maria	4	4		
" Elizabeth	4	4		
" Elizabeth (Colm)	4	4		
" Hannah	4	4		
" Isaac	4	4		
" Israel	4	4		
" Jacob	4	4		
" John	4	4		
" Levi	4	4		
" Levi, Jr.	4	4		
" Margaret (Hopppaugh)	4	4		
" Mary	4	4		
" Peter	4	4		
" Pheby	4	4		
" Richard	4	4		
" Sarah	4	4		
" Solomon	4	4		
" William	4	4		
Babock, Elizabeth	2	64		
Baker, Alexander	1	25		
" Almira	2	57		
" Edith	1	25		
" Lavannah	1	25		
" Jemima	2	76		
" Joseph	2	76		
" Martha	2	76		
" Mary (Almira)	3	87, 89, 90		
" Robert A.	1	25		
Barber, Benjamin	2	58		
" "	4	143		
" Mary	2	64		
" Mary (Tefft)	2	58		
" Moses	2	58		
" "	4	143		
" Ruth	2	58		
" "	4	143		
" Susannah (Soule)	2	58		
" Theresa	2	58		
" "	4	143		
Bardeen, Cyrus	2	64		
" Sally (Wilber)	2	64		
Bardeen-Cobb, Barbara	2	64		
Barlow, Anne	4	151		
" M/M George	4	151		
Bartholomew, Clifford	2	66		
" Cora Harshman	2	60		
Bartlett, Dr. John	1	10		
" Susan A. (Soule)	1	8		
" Susannah (Southworth)	1	10		
" Walter	1	8		
Bastable, M/M R. G.	2	68		
Bates, Nancy	1	8		
Bayley, Beatrice	2	47		
Becket (Bucket) Mary	1	6		
" "	2	57, 58, 74, 76		
" "	3	101, 102, 113		
" "	4	137, 143, 145		
Beckwith, Mary Lincoln	2	62		
Beebe, Don	2	68		
" Leon	2	68		
Belnap, Bruce	1	29		
Bennett, Susannah Soule	2	63		
Biglow, Emmogene Gertrude	4	137		
Bird, Martha (Soule)	2	68, 102, 113		
Birge, Laura C.	3	105		
Bisbee, Aaron	1	7, 18		
" Sarah (Soule)	1	7, 18		
Bishop, Tabitha	1	9		
Blackburn, Helen	1	21		
Blackmore, Susanna	1	10		
Blake, Mary	1	10		
Blanchard, Bill	1	27		
" Christy	4	136		
" "	1	27		
" "	4	136		
" Jean (Sowle)	3	119		
" Jeannette (Sowle)	1	27		
" "	2	67		
" "	4	126, 136		
" John D.	1	10		
" L. (Southworth)	1	10		
" Laura	4	136		
" Nancy	1	27		
" "	4	136		
" Pamela	1	27		
" Dr. Porter Bevan	1	27		
BLANCHARD, Robert	1	27		
" Robert Douglas, Sr.	2	67		
" Robert D.	4	147		
" Sally	1	27		
" "	4	136		
" Scott	1	27		
BLOCK, Linda K.	2	74		
Boath, Hon	1	11		
" Jane	1	11		
Boehm, Helen I.	3	113		
Bonney, Mehitable	4	137		
Bosworth, Bridget	1	9		
Boyer, Sarah	2	63		
Bradford, John	1	10		
" Jonathan	1	10		
" Lydia (Southworth)	1	10		
" Mary	1	10		
" Seth	1	10		
" Gov. William	4	146		
Bradley, Florence	3	101		
Bradsby, H. C.	3	87		
Brewster, Acenith	1	8		
Brigham, Oregon	3	88		
Brinker, Sister Mary Delora	3	84		
Broadway, Marion I.	3	105		
Brooks, Elizabeth	1	8		
" Fred	4	149		
" Lillian Soule	4	147, 149		
" Ray	4	149		
" Roy	4	149		
Brown, Desire	1	5		
" George	1	5		
" James	1	5		
" Margaret	1	5		
" Patrick	1	5		
" Timothy	1	5		
Bufflin, Bethel	2	73		
" Eleanor	2	73		
" Mary (Crowson)	2	73		
Buker, George E.	2	72		
Bulau, John	1	24		
" Mrs. Margaret Soule	1	22, 24		
Butler, Jemima	2	57		
" Margery	3	88, 89, 101		
" Thomas	1	11		
Byram, Nicholas	1	11		
" "	1	6		
Carper, Janet (Sowles)	2	63, 145		
Carpenter, Alice	1	4		
" "	3	86		
Chace, Laura	3	84		
Chamberlain, Grace	3	113		
Chandler, Sarah	1	7, 12		
Chapman, Mary	1	8		
Chrisman, Harriet	3	114		
Church, Alice	1	10		
" Alice (Southworth)	1	10		
" Benjamin	1	10		

Church, HulDAH (Soule)	1	7	Davis, Pearl Margaret (Lezotte)	2	77
" Thomas	1	7	" Robert Jefferson	2	77
Churchill, Kenneth (Ken)	4	150	Daynes, Elizabeth	1	11
Clark, Sarah	1	11	" Nicholas	1	11
Clark(e), Andrew	4	141	Delano, Abigail	1	7, 18, 19
" Benjamin	4	141	" Hannah	1	7, 9, 17
" Ebenezer	4	141	" Lydia	1	7, 14
" Joseph	4	141	" Rebecca	1	7, 10
" Lydia	4	141	de Luna, Don Tristan	3	115
" Mary	4	141	de Sanchez, Eunice	4	150
" Nathaniel	4	141	de Soule, John	3	96, 98
" Sarah	4	141	" Nicholas	3	96
" Scotto	4	141	" William	3	96, 98
" Seth	4	141	De Vilbis, Beatrice	1	20
Gline, Allene Brookins	4	154	de Winsor, Henry	3	96
" C. R. (Cecil Roy)	4	154	Denise, Ira C.	3	105
" Elizabeth	4	154	Denison, Shirley T.	4	154
" George	4	154	Deuel, Benjamin	3	113
" Mary Fogg	4	154	" Hannah (Exton)	3	113
Cobb, Rachel	1	12	" Phoebe Smith	3	113
" John	1	12	Deuel (Daval) Joseph	3	113
Collar, Capt. John	3	88	" (Duel) George	3	113
Collier, Elizabeth	1	9, 11		4	145
Collins, Lillis	2	63	De Velbiss, Beatrice	4	147
" Phoebe Ann (Soule)	2	63	Devol, Jerry Barker	4	129, 136
" Simeon	2	63	Dewel, Edgar H.	3	113
Colm, Caty (Ayers)	1	4	Dix, Kathryn Sharp	2	69
" David	1	4	Drake, Desire (Brown)	1	5
" Elizabeth	1	4	" Elias	1	4
" William	1	4	" John	1	4
Colson, Harriet	3	102			
Conger, Norma	1	24, 27	Drake, Joseph	1	5
Cook, Kelly	4	151	" O. D.	1	5
" Sybil (Smith)	2	66, 71	" Samuel G.	1	6
Cooke, Francis	2	75	Drew, Abigail (Soule)	1	7, 17
" Hester (Mahieu)	2	75	" Percy	1	7
" Mary	2	75	" Perez	1	7
Coplen, Mildred (Soule)	2	67	" Sarah	1	10
" Spencer A.	2	67	Drews, Frank	2	68
Cornett, Kevin	1	24	Drinkwater, Arthur M.	2	66
" Marcus Kent	1	24	" M. Shirley	2	66
" Rita (Soule)	1	24	Du Mond, Charles	4	150
Cortright (Courtwright) Asa	1	4	" Lloyd E.	4	150
" David	1	4	" Mrs. Ruth E.	4	150
" Hannah	1	4	Dungan, Jessica Kathryn	1	24
" Hannah (Ayers)	1	4	" Joy (O'Donnell)	1	24
" Pheby	1	4	Durfee, Maribe	2	76
" Solomon	1	4	Dutton, Isabel	1	11
" William	1	4	" John	1	11
Crismore, Frank	4	126			
" Mrs. Frank (Mary)	1	2, 28	Easley, Shaun Michael	2	66
	2	42	" George	2	66
	3	82	" Linda	2	66
	4	122, 125, 126, 127	Eaton, Francis	2	70
		130, 141, 147	" Mary	2	70
" Beryl	1	28	Edmondson, Edward	3	105
" Francis Elvin	1	28	Elam, Charles H.	3	103
" Frank Alexander	1	28	Eleanor of Aquitaine	3	98, 99
" James Benton	1	28	Elster, Casper H.	2	74
			" Dorothy	2	74
			" Margie Dorothy (Soule)	2	74
Crismore, Jennie Lee	1	28	English, May (Soule)	2	77
" John Marion	1	28	Enos, Eugene	1	24
" Mary Ann	1	28	" Phyllis (Soule)	1	24
" Nancy Marie	1	28	" Theresa Ann	1	24
" Rachel Ann	1	28	Erickson, Mrs. Chris	1	24
" Thomas Webb	1	28	Exton, Hannah	3	113
" William Frank	1	28			
Croel, Anny	1	4	Faulk, Laura	2	66
Crosby, Sabina D.	2	43	Fellows, Col. John	3	88
	3	82, 94	Fenton, Jean	4	150
	4	122, 135, 141	Fidlar-Brod, Mrs. Karyl	1	22
Cucchiara, Joe	3	110	Finn, Edward	2	68
Culver, Mrs. Mira	1	25	" Michael Thomas	2	68
Curtis, Abagila (Soule)	1	9	" Mary	2	68
" Elijah	1	9	" Mrs. Mary Soule	2	68
" Elizabeth	3	102		3	105, 107, 113
Cushing, Irene	1	28	" Thomas	2	68
Cushman, Alethea (Soule)	1	6, 17	Fobes (Fobbes) Elizabeth (Southworth)	1	10
" Allerton	1	6, 17	" Mary	1	10
" Joshua	1	7, 17, 18	" Priscilla	1	10
" Mary	4	145	" William	1	10
" Mary (Soule)	1	7, 17, 18	Fogg, Jeremiah	4	154
" Josiah	1	18	" Lydia (Hill)	4	154
" Robert	1	18	" Mary	4	154
			" Thomas Prentice	4	154
Dana, Lydia	4	143	Ford, Deborah	1	18
" Lydia	2	58	" Lucy	1	8
Dawkins, Mary (Mrs. W.L.)	2	44	Ford, Mrs. Odessa	3	150
	3	119	Fors, Jeffery Scott	4	155
" Mrs. Wallace	1	22			

Fors, Karen Minard	4	155	Hartman, Paul	1	24
" M/M Robert	4	151	" Tammy Christine (Rudgers)	1	24
" Robert (Butch)	4	155	Harper, Frances Blanche	3	101
Fraze, Bertha	3	90	Harvey, Lloyd V.	1	27
Freeman, Alexander	1	5	" Mrs. Loyd	1	24
" Bethiah	1	8	" Norma (Conger)	1	24, 27
" Desire	1	5	" Rebecca Anne	1	24
" Elizabeth	1	5	Haskell, Allie	1	24
" Isabelle	4	141	" George	1	24
" Jacob	1	5	" John	1	24
" James	1	5	" Jonatnan	4	153
" Lydia	1	8, 19	" Patience (Soule)	1	24
" Mary (Stiles)	1	5	" Squire	4	153
" Mercy (Southworth)	1	9	" Hatch, Deborah	1	24
" Miriam Bingham	1	25	Haughton, Elizabeth	1	10
" Samuel	1	9	" John	1	11
Friedland, Alfred	2	71	Heinerikson, Mrs. Dorothy	1	11
" Deborah Jerome	2	71	" Dorothy (Elstner)	2	74
Fullerton, Alethea	1	7	" Eric Michael	2	74
" Ann	1	7	" Faith	2	75
" Betty (Southworth)	1	10	" James Jay	2	74
" John	1	7	" Kevin John	2	74
" Mary	1	7	" Lee Thomas	2	75
" Mercy	1	7, 18	" Linda K. (Block)	2	74
" Rebecca (Delano)	4	145	" Mark Thomas	2	74
" Reumah	1	7	Heinerikson Patrick Michael	2	74
" Ruth (Sampson)	1	10	" Sherry (Vickery)	2	74
" Samuel	1	7	" Theresa	2	74
" William	1	7	" Theresa Ann	2	75
Galbraith, M/V Clarence	1	24	Hennessey, John, Mrs.	1	24
" Matthew Scott	1	24	" John J.	1	24
" Natalie Jean (Soule)	1	24	Henry II	3	98, 99
Gamble, James	2	72	Henry-Beauclerk	3	96
Gammons, Helen (Soule)	1	25	Henry of Windsor	3	96
Gebeau, Bonnie	3	150	Herman, Amanda M.F.	3	114
Garber, Elenor (Souls)	3	87, 89	Hickey, Mrs. Tom	4	149
Garrett, Jack	2	68	Hicks (Hix) Ruhama	3	102
Gibbs, Mrs. R. R.	2	63	Hill, Dawn Lee	4	155
Gillig, Mrs. H. L.	2	60	" Lydia		
" Ruth	2	60	Hogan, C. G.	2	73
Gocherouer, Dora	3	86	Holmes, Caroline (Soule)	1	8
Goodwin, Mrs. Charles A.	1	22	" Ellen	2	67
Gordon, Pamela Jane	2	68	" George	1	8
Gottscharl, Octavia True (Soule)	3	104	" Linda	2	67
Graham, Caroline Lucinda	2	71	Hoppaugh, Margaret	1	4
Graves, Lillian	3	90	Hopping, Louis M.	1	22
Gray, Desire	1	9	Houck, James Schuyler	2	66
" Edward	1	9	" Leigh Schuyler	2	66
Griffin, C. F.	2	78	" Rob Roy, Jr.	2	66
Gutzeit, Carlos Louis	2	77, 79	Hough, Dorris	1	11
" Nona	2	76	Houriet, Julia E. (Souls)	3	90
" Thelma	2	77, 78	Howard, Margaret	2	63
Gutzeit, C. Louis, Mrs.	2	67	Howland, Jael	1	9
" Carlos Louis	2	67	Hoyt, Olive	2	70
Hall, Aletha (Soule)	1	7. 9	Huber, Mary Elizabeth (Means)	1	25
" Arthur W., Mrs.	2	71	Hulse, Phyllis S.	3	147
" Capt. Daniel	1	7	Hurley, Dan	3	84
" Mrs. Dorothy Keifer	2	104, 105	Hussey, Ann	3	90
" Dorothea May	1	19	Hunt, Asa	1	8
" George Anthony	1	19	" Abigail (Soule)	1	8
" Joshua	1	9	" Deborah (Soule)	1	9
" Lucretia	2	63	" John	1	9
Hallum, Gus	2	70	Hutchins, Richard	1	23
" Margery Robertson	2	70	Hutton, Edward	4	136
Haner, Betty-Jean	1	2	Ide, Cathy Janean	2	66
"	2	42, 58	" Jessica Kay	2	66
"	3	82	" Karen	2	66
" Mrs. Paul (Avis)	4	122, 124-130, 135/6, 142, 147	" William F.	2	66
"	1	2, 22	Ingersoll, May Myrtle	3	113
"	2	42, 58	" Razetta	3	113
"	3	82	Isham, Edward S., Mrs.	2	62
"	4	122-124, 130, 136, 143, 147	Jakes, John	2	70
" Robert Paul	2	58	Jay, Mrs. Robert C.	1	22
" Peggy Ann	4	143	Jerome, Mrs. Michael	1	22
Hansen, Elair	1	22	Johnson, Donna	1	24
" Clair E.	2	66	" Eugene M.	1	22, 24
Harding, Anne Borden	2	78	" Jonathan M.	1	24
Harris, Betty	1	127, 147	" John M.	1	24
Harrington, Hannah (Southworth)	1	11	" Helen (Sowle)	1	24
" Hezekiah	1	11	" Milon	1	24
Harris, Mrs. Edwin S.	2	48	Jones, Belle	3	90
"	3	96	" Irene	1	2
Harrison, Maria P.	3	105			
" Sally	4	147			

	2	42			
	3	82			
Jorgensen, Lis.	1	30			
" Pia	1	30			
Joyce, Alethea (Soule)	1	7			
" Ebenezer	1	7			
Kamps, Donald	4	136			
" Patricia	4	136			
Keith, Mrs. E. Leon	4	149			
Keleher, James	2	66			
" Kathy	2	66			
" Velma	2	66			
Kennedy, D. James	4	146			
Kenyon, Ketura	2	58			
" Robert	2	58			
	4	143			
Keifer, C. P.	3	105			
Kelly, Harriet	3	114			
" James	1	20			
	3	116			
" Mary Soule	1	20			
	2	20, 22, 42			
	3	82, 116			
	2	77			
Keyes, Wanda	4	154			
Kimball, Mary (Folly)	3	104			
King, Clara	3	104			
" Elizabeth	4	150			
" John	3	104			
Kinner, Margaret	3	113			
Knapp, Emma Whitman	1	62			
" Wallace C.	1	62			
Kuralt, Charles	3	84, 93			
Langton, Ellen	1	11			
" Richard	1	11			
Lanham, Mrs. Frank A. (Cay)	4	141			
Lauer, Lorene	2	64			
Lawton, Julia	4	145			
Lee, Nina R.	3	113			
" Norma Soule	4	147			
" Sue Dunlap	2	60			
" Walter G.	1	22			
Lentz, Christina Ann	1	24			
" Holly	1	24			
" Holly (Platt)	1	25			
Lewis, Asa	1	10			
" Lucy (Southworth)	1	10			
Lertz, Murl	2	70			
Lewis, Anna (Soule)	2	71			
" Percyval	2	71			
" Gertrude Soule	2	66			
Lezotte, Nona Thelma	2	77			
" Pearl Margaret	2	77			
" Raymond Frederick	2	77			
" Rosa, Mrs.	2	78			
" Rosa Arilla Dean	2	77			
" Wanda (Keyes)	2	77			
" William	2	77			
" William Leslie	2	77			
Lieberman, Laura (Platt)	1	25			
Linner, Mrs. Norma (Fawcett)	3	114			
Lloyd, Edward	1	11			
" Jane	1	11			
Loring, Alethea (Soule) (hall)	1	7			
" Levi	1	7			
" Lucy	1	8			
" Prudence	1	8			
" Mary (Southworth)	1	10			
" Thomas	1	10			
Lugli, Mrs. David	1	22			
Mac Lauren, Mary Ann	2	62			
Macomber, Hannah	3	102			
" Patience	3	114			
Magoon, David	1	9			
" Rachel (Soule)	1	9			
Maher, Mrs. Esma Baker	1	25			
Mahieu, Hester	2	75			
Mahler, Mary Elizabeth (Curtiss)	2	66			
Main, Florence	2	60			
Malambre, John A.	3	105			
Manly, Opal (Soule)	1	2, 20			
	2	42			
	3	82, 116, 119			
	4	122, 124, 126, 136			
Mathewson, Charles F.	4	152			
Mathison, Donald S.	4	147			
Mc Burney, Frederic A.	4	147			
Mc Fadden, Sarah C.	3	90			
Mc Keand, Robert	4	151			
" Wilma	4	151			
Mc Kenzie, Sarah	3	90			
Mc Laffin, Mary	3	87, 89			
Mc Michael, M/M Wayne	4	150			
Mc Nelis, Eleanor Couture	4	147			
Means, Carroll Gates Alton	1	25			
" Mary Elizabeth	1	25			
" Sylvia (Shepherd)	1	25			
Medlar, Clara (Soule)	3	104			
" Daniel	3	104			
Menard, Andrea Michelle	4	155			
" Mrs. Arlyene	4	151, 155			
" Bessie (Soule)	4	151, 155			
" Charles	4	155			
" James	4	155			
" Lucinda (Taylor)	4	155			
" Michael	4	151, 155			
" Mrs. Michael	4	151			
Merritt, Betty (Soule)	3	119			
" Jack	4	125, 126, 136, 147			
" Joan	4	136			
Mervis, J.	3	100			
" M.	3	100			
Miller, Fedelia (Soule)	3	90			
" Isaac W.	3	90			
Mitchel, Mrs. James F. (Julia D.)	4	145			
" Joanna	1	10			
Moeckel, Mona C.	2	63			
Mollineaux, Edward	1	11			
" Elizabeth	1	11			
Money, Rachel Ann (Crismore)	1	28			
Monks, Mrs. Leon	1	25			
Montgomery, Hart	3	90			
" Lucy	3	90			
Moore, J. T.	3	104, 105			
Morton, Bruce	2	68			
" Carroll	2	68			
" Craig	2	68			
" Dorothy	2	68			
" Harell	2	68			
" Myrtle	2	68			
" Raymond	2	68			
" Royce	2	68			
Mostert, Margaret	4	147			
Motisher, Marion, Mrs.	1	22			
Moulton, Nathaniel	1	28			
" Isabell (Soule)	1	28			
" Powers G.	2	64			
Mullins, William	2	70			
Munger, Mrs. Harry L.	3	105			
Murdock, Mrs. John	2	60			
" Phyllis S.	2	60			
Mutrie, M/M Barry	4	151			
" Carla	4	151			
" Eleanor	4	151			
" M/M Ronald D.	4	151			
Mynne, Jane	1	11			
" Nicholas	1	11			
Myrtle, May	3	113			
Nash, Esther	1	12			
" Lt. Samuel	1	12			
Needles, Malvina	3	105			
Neukom, Wilhemina	3	90			
Newton, Rhoda B.	2	46			
Nichols, Mrs. Andrew J.	1	27			
" Geraldine	3	110			
" Geraldine S.	4	147			
" Pamela	3	110			
" Philip Soule	3	110			
" Rebecca Caroline	3	110			
" Robert P.	3	110, 114			
Niederfrank, Rev. Don	1	26			
Norton, Rebecca	2	46			
O'Brien, Barbara	4	146			
" Josephine	4	148			
O'Connell, Mrs. Thomas (Marian)	1	2			
	2	42			
	3	82, 119			
	4	122, 127/8, 130, 132/3, 136			
O'Donnell, Carrie	1	24			
" Joy	1	24			
Olson, Kenda Sue	1	24			
" Kenneth	1	24			
" Peggy	1	24			

Olson, Thedda (Soule)	1	24	Pride, Mrs. Dorothy	4	151
" Tony, M/M	1	24	Prill, William P.	3	105
Owsley, Nettie	2	57	Prince, Paul	1	10
			" Sarah (Southworth)	1	10
			Prior, Benjamin	1	7
			" Sarah (Soule)	1	7
Pabodie, Mary	1	10	Pryde, M/M Peter	4	151
" Rebecca	1	10	Pugh, Christopher	2	74
" Priscilla	1	10	" Faith Marie (Heinerikson)	2	74
Palmer, Barbara Jean	4	150	" Rebecca M.	2	75
" Elizabeth	1	10	" Henry C.	3	90
" M/M John B.	4	150	" Mary S. (Soule)	3	90
Parker, Col. F. T.	1	25	Pullen, Lloyd	3	113
" Frederic	1	26			
" Frederic B.	1	26	Ragle, Elizabeth	2	67
" Frederic T.	1	26	" Harold Eugene	2	67
" Gladys Mae	2	64	Rash, Mrs. Esther S.	1	22
" James	1	26	Raymond, Claude	1	27
" Lilly (Thompson)	1	26	" Martha	2	70
" Lois	1	26	Reed, Cora	2	71
Parkin, Elizabeth Soule	4	154	Reeves, Daniel	3	87, 89
Partridge, Mehitable	1	7	" Eliza (Souls)	3	87, 89
" Mehitable (Mable)	1	17	Reiman, Desdemona (Souls)	3	90
" Polly	1	8	" Theodore	3	90
Patrick, H. H.	2	73	Reinstatler, Aileen	3	118
" H. H. Jr.	2	73	Rensen, Alfred	1	22
Patterson, Helen	4	147	Renwick, Joan Kelly	1	20
Payne, Elizabeth	1	5	" Joan	3	116
" Lee	1	23	Reyner, Elizabeth	1	11
Pearce, Dan	1	2			
	2	42			
	3	82, 94			
	4	122, 136	Reynolds, L.	1	25
Peavey, Dr. Samuel	3	119, 136	" Lavannah	1	25
Perry, Agatha	2	57	Rider, Joseph	1	9
" Agathy	3	101	" Mary (Southworth)	1	9
Peters, Chad William	4	155	Ridlon, Rev. G. T.	2	98
" Dennis Victor	4	155	Ring, M/M Dean E.	3	113
" Peter Norman	4	155	" Lorraine, (White)	3	113
" Rosemary (Soule')	4	155	Roberson, Albert H.	2	58
Peterson, Alice	1	7	" Avis Hilton	4	143
" John	1	6	" Francis	2	58
" Joshua	1	8	" Henry Freeman	4	143
" Mary (Soule)	1	6	" Ira	2	58
" Silvia (Soule)	1	8	" Lydia (Dana)	4	143
Phillips, Asa	1	11	" Mary Emmaline (Pinkerton)	2	58
" Cynthia (Southworth)	1	11	" Thresa (Barber)	2	58
Phipps, Sir William	1	13	Robert-Curthose	3	96
Pickett, John H.	2	63	Robertson, Raymond	2	70
Pine, L. G.	3	96	" Sarah (Vaughan)	2	70
Pierce, Albin L.	1	25	Robinson, Mrs. Gertrude Hall	1	25
" Edith (Baker)	1	25	Rosasco-Soule, Adelia	4	147
" Lydia	1	8	Ross, Sophia A.	4	137
Pinkerton, Mary Emmaline	2	58	Rudgers, Mrs. Barbara	1	25
	4	143	" M/M Robert	1	24
Platt, Caroline	1	25	" Tammy Christine	1	24
" Donald Lieberman	1	25	Rupp, Jenifer Helen	4	155
" Eric	1	25	Russell, Amy Elizabeth	4	154
" Holly	1	25	" Mrs. Jeffrey Warren	4	154
			" Dr. Jeffrey Warren	4	154
			" Orville	4	154
			" Sue (Champlin)	4	154
			Ryan, Mrs. John A.	3	113
Platt, Jonatha	1	25			
" Laura	1	25	Sampson, Andrew	1	8
" Paul	1	25	" Ebenezer	1	7, 17
" Randall	1	25	" Eden	1	8
Pomeroy, Albert	1	11	" Esther	4	145
Pope John Paul	4	145	" George	1	6, 8
Porter, Abigail	4	145	" Gideon	1	9
Potekhen, George P.	1	27	" Esther (Nash)	1	12
" Joni	1	27	" Hannah (Soule)	1	6
" Michael	1	27	" Isabella (Soule)	1	8
" Nancy E. (Soule)	1	27	" Lydia (Soule)	1	8
" Shawn	2	61	" Samuel	1	12
" Tania	1	27	" Salumith	1	8
" Teke	2	61	" Sylvanus, Jr.	1	8
Powell, Lt. Col.	3	88	" Mary (Chapman)	1	8
Powers, Theda	2	47	" Mary (Townsend)	1	8
Pratt, Harriett	3	113	" J. A.	1	8
" Hiram	3	113	" Rebecca (Soule)	1	9
Preble, George Henry	2	72	" Ruth	1	7
Preston, John Soule	4	124, 126, 133, 136	" Zeruiah (Soule)	1	7, 17
" Linda	1	2, 3, 11, 20, 21	Sankey, Charles Origen	4	145
	2	42, 49		2	57
	3	82-85, 116, 118, 119			
	4	122-125, 127-136, 147			
" John	2	44, 59			
" S. Henry	3	119			
	3	119			

Sankey, Elizabeth	4	145	" Rachel	3	113
" Elizabeth (Betty)	2	57	" Sybil	2	66, 71
" Elizabeth Evelyn	2	57	Snell, Mrs. Dale F.	1	24
" George Franklin	3	90	" Lloyd Dale	1	24
" James R.	3	109	" Theresa Ann (Enos)	1	24
" Julia Esther (Soules)	3	90, 109	Sole/Soule, Isiah	2	63
" Nettie (Owsley)	4	145	" Tabitha ()	2	63
" Nettie (Owsley)	2	57	Soul, Daniel	3	114
Sayer, Lavannah	1	25	" Fanny	3	114
" Mary (Sowle)	1	25	" George W.	3	114
Scales, Joanna (Southworth)	1	10	" Harriet (Secor)	3	114
" Nathl. (Nathaniel)	1	10	Soule, A. Bradley, Jr., M.D.	2	66
Schlosser, Christine Anne	1	27	" A. C.	4	156
" Daniel Scott	3	102	" A. P.	4	156
" Geraldine (Sowle)	1	27	" Aaron	1	7, 12, 13, 15
"	2	72	" Aaron M.	4	156
"	3	102, 111, 112, 114, 119	" Aaron S.	4	156
"	4	122, 124, 130, 133, 136	" Aaron Steward	4	156
"		141, 148	" Abagila	1	9
" Mrs. James (Geraldine)	1	2, 27	" Abbie A.	4	156
"	2	42	" Abbie F.	4	156
"	3	82, 101, 102, 119	" Abbie K.	4	156
" Jim	4	136	" Abbie W.	4	156
" Kenneth Robert	1	27	" Abigail	1	7, 8, 18
"	3	102, 119	" Abigail (Bosworth)	1	8
" Steve	4	136	" Abigail (Delano)	1	7, 18, 19
" Steven James	3	102	" Abigail (Tolman)	1	7
Schmuck, Laura Soule	4	147			
Schoenfeld, Theresa Ann (Heinerikson)	2	75	Soule, Abisha	1	7, 16, 18, 19
" Victoria S.	2	75	" Abraham	4	156
Soulyer, Constance (Cook)	2	66	" Abram	4	156
" Leigh	2	66	" Acenith (Brewster)	1	8
Schwartz, Valentine H.	3	105	" Adelia Rosasco	4	147
Scott, Luetta	3	102	" Ada Bell	4	156
Seaver, Elizabeth	1	8	" Ada E.	4	156
Sears, Hazel	3	119	" Ada C. ()	4	156
" Mrs. Hazel Soule	3	136	" Agatha (Perry)	2	57
Seebohm, Louis	3	105	" Alanson	4	156
Semmler, Mrs. Christine (Soule)	3	119	" Albion B.	4	156
"	4	136	" Albion Paris	4	156
Sevier, Marie	3	119	" Albert	4	148
"	4	124, 125, 126, 136	" Albert B.	4	156
Sexton, Hannah	4	145	" Albert Boyd	4	156
Sharp, Daniel	2	66	" C.	4	156
" Daniel Andrew	2	66	" Albert Clinton	4	156
" Laura (Faulk)	2	66	" Albert Creech	4	156
Shaw, Sarah	2	74	" Albert E.	4	156
Shepard, Ambrose	3	113	" Albert Edward	4	156
" Evelyn	3	119	" Albert G.	4	156
"	4	126, 136	" Albert L.	4	156
" Minerva	3	113	" Albert Louis	4	156
Shepherd, Sylvia	1	25	" Albert Perington	4	156
Sherman, Rebecca	3	89	" Albert W.	4	156
" Rebecca Jessup	3	101	" Albert Mason	4	149
Shultz, Michael	1	24	" Aleck	4	156
" Patrick	1	24	" Alethea	1	6, 7, 8, 9, 17
" Rebecca Ann (Harvey)	1	24	" Alfred	4	156
" Scott Victor	1	24	" Alfred F.	4	156
			" Alfred G.	4	156
Simon, Ichabod	1	19	" Alfred Leroy	4	156
" Lydia (Soule)	1	7, 19	" Alfred M.	4	156
" Mercy (Sprague)	1	19	" Alfred Morton G.	4	156
Simmons, Consider	1	9	" Alfred N.	4	156
" Rebecca	1	10, 12	" Alice	1	8, 9,
"	2	57, 74	"	2	73
"	3	86, 101	" Alice B. ()	4	156
"	4	137	" Alice E. ()	4	156
" Noah	1	11	" Alice E. ()	4	156
" Silvia (Southworth)	1	11	" Alice Ena	4	156
Sisk, Jayme Lynn	4	155	" Alice Helen	4	156
" Linda (Spade)	4	155	" Alice M. ()	4	156
" Mike	4	151	" Alice M. ()	4	156
" M/M Patrick	4	151	" Alice Peterson	1	7
" M/M Patrick, Jr.	4	151	" Alice Vivian	4	156
Skidmore, Ada (Sowle)	2	77	" Alice W. ()	4	156
Slade, Sarah	2	76	" Allie	4	156
" Sarah (Holmes)	2	76	" Almira (Baker)	2	57
" William	2	76	" Almond	4	149, 154
Smith, Mrs. Clinton S.	1	25, 27	" Almond, Jr.	4	154
"	4	146	" Almor	4	156
" David	3	87, 89	" Almon A.	4	156
" Edna	3	102	" Almon Albertine	4	156
" Florence (Soule)	2	66, 71	" Almon P.	4	156
" Hazel Saowle	4	152	" Alonzo K.	4	156
" Pamela Campbell	3	95	" Alonzo R.	4	156
" Phoebe	4	137	" Alonzo S.	4	156
" Polly (Souls)	3	87, 89			
" Shirley	1	28			
"	2	62, 72			
"	3	119			
"	4	126, 127, 136, 147			

Soule, Alpheus	4	156	" Billy	4	156
" Alpheus William	4	156	" Bradley	1	22
" Alson L.	4	156	" Bryant	2	73
" Alson Lothrop	4	156	" Burton	3	113
" Alson Q.	4	156	" C. Frank	4	156
" Alton	4	156	" Calvin	4	156
" Alton P.	4	156	" Calvin P.	2	73
" Alvin	4	156	" Carol Nathan	4	145
" Alvin K.	4	156	" Carolen	1	8
" Alvin R.	4	156	" Caroline	4	156
" Amase	1	9	" Caroline A.	4	156
" Ambrose Latten	2	59	" Caroline E.	4	157
" Amelia	2	73	" Caroline Lucinda (Graham)	2	71
" Ammon Victor	4	156	" Caroline M.	4	157
" Andrea	2	67	" Carroll	1	8
" Andrea Jayne	2	66	" Cedric W.	4	157
" Andrew	1	23	" Celia	2	73
" Andrew J.	4	156	" Celia D.	4	157
" Angie F.	4	156	" Celia S.	4	157
" Ann	1	9	" Celinda L ()	4	157
" Ann Judson	4	73	" Charles	1	8, 23
" Anna	2	7	" Charles Arthur	2	59
" Anna E. ()	4	156	" Charles B.	3	103-105, 107, 115
" Anne	4	151	" Charles N.	2	67
" Annie	2	66	" Charles N.	3	114
" Annie L.	4	156	Soule, Charles	4	156
" Annie Morton	3	145	" Charles A.	4	156
" Ansil D.	4	156	" Charles Arthur	4	157
" Araminta M.	4	156	" Charles C.	4	157
" Arra W.	4	156	" Charles F.	4	157
" Arthur	4	156	" Charles H.	4	157
" Arthur Bradley, Jr.	2	66	" Charles Herbert	4	157
" Arthur Bradley III	2	66	" Charles Howard	4	157
" Arthur Burnham	4	156	" Leslie	4	157
" Arthur C.	4	156	" Charles Maybury	4	157
" Arthur Cobb	4	156	" Charles N.	4	157
" Arthur E.	4	156	" Charles S.	4	157
" Arthur Ellsworth	4	156	" Charles W.	4	157
" Arthur F.	4	156	" Charles William	4	157
" Arthur Frederick	4	156	" Charles Y.	4	157
" Arthur M.	4	156	" Charley	3	104
" Arthur N.	4	156	" Charlotte	4	157
" Arthur Oswell	4	156	" Charlotte E. ()	4	157
" Arthur W.	4	156	" Chester Carl	4	157
" Apheta	1	?	" Chester E.	4	157
" Asa	1	7, 9, 11	" Chester S.	4	157
" Asbury E.	4	149, 154, 156	" Christian	2	73
" Augusta E.	4	156	" Christine Elizabeth	4	157
" Augustus C.	4	156	" Clara	3	10
" Austin Dennett	4	156	" Clara B.	4	105
" Avilla Florence	4	156	" Clara B. (Bunkey)	1	25
" Azella ()	4	156	" Clarence	3	25
" B. F.	4	156	" Claron	2	62
" Barbara Carroll	4	156	" Clarence A.	4	157
" Barbara Eloise	4	156	" Clarence B.	4	157
" Barbara West	4	156	" Claude E.	2	61
Soule, Barnabas	3	109	" Claude R.	2	67, 69
" Benjamin	1	6, 12, 13, 15	" Claude Raymond	2	69
" Benjamin A.	4	63, 70, 73	" Clement	3	102
" Benjamin Elwin	4	112, 119	" Clement Hall	3	109
" Benjamin F.	4	137, 145, 153, 156	" Clenentine L. ()	4	157
" Benjamin Frank	4	156	" Clifton	4	157
" Benjamin P.	4	156	" Clifton E.	4	157
" Benjamin T.	4	156	" Clinton	4	157
" Ben George	1	2	" Clinton C.	4	157
" Bernard S.	2	42	" Clinton Curtis	4	157
" Bertha Florence	3	82	" Clinton Eugene	4	157
" Bessie	4	122, 123, 128, 129, 130	" M/M Clyde	4	151
" Bessie Caroline	4	132, 136, 137, 147, 150	" Clyde A.	4	157
" Bessie Laura	4	156	" Clyde Esten	4	157
" Beth F.	4	151, 155	" Clyde F.	4	157
" Bethany Marie	4	156	" Clyde Frank	4	157
" Bethiah (Freeman)	2	66	" Clyde M.	4	157
" Beulah F.	1	8	" Clyde Thomas	4	157
" Beverly Anita	4	156	" Clyde M.	2	66
" Beverly Mae	4	156	" Clyde M.	3	110
" Bildad	3	86, 88, 89	" Clyde M.	4	150, 155
" Bildad William	2	57	" Constant	1	7
			" Constant (Southworth)	1	19
			" Cornelius	4	157
			" Crawford	2	157
			" Crawford Ahorn	4	157

Soule, Cynthia	4	145	" Ella C.	4	157
" Cynthia	1	8	" Ella L.	4	157
" Cynthia (Wadsworth)	1	8	" Ellen M.	4	157
" Dana A.	4	157	" Ellen Phyllis	4	157
" Dana Edward	4	157	" Ellery H.	4	157
" Daniel	4	157	" Elmer	1	23
" David	4	137, 145	" Elmer Joseph	3	112
" David E.	4	157	" Elmer W.	4	157
" David Brandford	4	157	" Elsie Ann	4	157
" David F.	4	157	" Elsie L.	4	158
" David Farnham	4	157	" Elvena E. ()	4	158
" David S.	4	157	" Elvin T.	4	158
" De Alanson	3	112	" Elvirus	3	114
" Deborah	4	145	" Elwin A.	4	158
" Deborah	1	9	" Elwin Austin	4	158
" Deborah ()	4	157	" Elwin Joseph	4	158
" Deborah (Ford)	3	113	" Elwin H.	4	158
" Delia A.	1	18	" Emery Eugene	4	158
" Denice	4	157	" Emily Ann	4	158
" Dennis W.	4	150	" Emily J.	4	158
" Dennis Whitman	4	157	" Emily J. (-----)	4	158
" Donald	4	157	" Emily S.	4	158
" Donald Arthur	4	150	" Emma ()	4	158
" Donald Ervin	4	157	" Emma F.	4	158
" Donald Everett	4	157	" Emma G. ()	4	158
" Donald Gould	4	157	" Emma L.	4	158
" Donald W.	4	157	" Emma May	4	158
" Dora Alberta	4	157	" Emma Whitman (Knapp)	2	62
" Dora C.	4	157			
" Dora M. ()	4	157	Soule, Enoch	1	8
" Dorance Ashley	4	157	" Enos	3	109, 158
" Doris Arvilla	4	157	" Enos E.	4	159
" Dorothy Ellen	4	157	" Erik	4	142
" Dorothy H.	4	157	" Erma May	4	158
" Dorothy M.	2	67	" Ernest	4	158
" Dorothy Morton	2	68	" Ernest B.	4	158
" Earl	3	112	" Ernest Carroll	4	158
" Eben	3	157	" Ernest E.	4	158
" Ebenezer	4	153	" Ernest Francis	4	158
" Ed.	2	67	" Ernest H.	4	158
" Mrs. Ed.	2	67	" Ernest Howard	4	158
" Mrs. Edgar	4	148	" Ernest Leon	4	158
" Edith Gertrude	4	157	" Evrin L.	4	158
" Edith Margaret	4	157	" Ervin Stanley	4	158
" Edith May	4	157	" Estella	4	158
" Edith V. ()	4	157	" Esther	1	7
" Edna	4	157	" Esther ()	1	6
" Edna M.	4	157	" Esther Marguerite	4	158
" Edward	4	157	" Esther (Nash)	1	12, 13, 14
" Edward B.	4	157	" Esther (Sampson)	1	12, 13
" Edward Hersey	4	157	" Ethelyn Celia	4	158
" Edward S.	4	157	" Etta	4	158
" Edwin	4	157	" Etta F.	4	158
" Edwin A.	1	8	" Eugene	3	114
" Edwin C.	1	22	" Eugene L.	4	158
" Edwin F.	4	157	" Eugene Thanet	4	158
" Edwin G.	4	157	" Eunice Beverly	4	158
" Edwin M.	4	157	" Eunice Emma	4	158
" Edwin Maurice	4	157	" Eva Belle	4	158
Soule, Edwin T.	4	147	" Eva Elizabeth	4	158
" Elbridge	4	157	" Eva Elizabeth ()	4	158
" Elden A.	4	157	" Everett	4	158
" Eldred L.	4	157	" Everett C.	4	158
" Eleanor	3	88, 89	" Everett Day	4	158
" Eleanor	4	151, 157	" Everett Elmer	4	158
" Eleanor Howard	4	157	" Everett J.	4	158
" Eleanor Iona	4	157	" Everett Littlefield	4	158
" Eleanor M.	4	157	" Everett M.	4	158
" Eleanor (Bifflin)	2	73	" Ezekiel	1	7, 8, 9, 17, 18
" Eleanor (Williams)	2	57	" Ezra	1	23
" Elenor Grace	4	157	" F. E.	2	74
" Elias	4	157	" F. Marshall	4	158
" Elias B.	4	157	" Fannie E.	4	158
" Elias Walter	4	157	" Fayette F.	2	59
" Elice Eva	4	157	" Fern I	4	158
" Elijah	2	62	" Florence	2	66, 71
" Elijah D.	2	62	" Florence E.	4	158
" Eliza Jane	4	157	" Florence Morrison	4	158
" Eliza A.	4	157	" Florian William	4	158
" Elizabeth, Mrs.	3	104	" Mrs. Floyd J.	4	145
" Elizabeth ()	3	104	" Frances	4	158
" Elizabeth Bradford	4	157	" Francis B.	4	158
" Elizabeth E.	4	157	" Frances Eugenia	4	158
" Elizabeth Gertrude	4	157	" Frances Gilmore	4	158
" Elizabeth J. ()	4	157	" Francis M/M	2	67
" Elizabeth	1	6	" Francis B.	4	158
" Elizabeth (Brooks)	2	73	" Francis G., Dr.	2	66
" Elizabeth (Ragle)	1	8			
" Ella	1	8			
	3	104, 105			

Soule, Francis G., Mrs.	2	66	" Gustavus P.	4	159
" Francis G.	4	147	" Guy H.	4	159
" Francis G., Jr.	4	148	" Guy W.	4	159
" Francis S.	4	158	" H. Catherine	4	159
" Francis Stephen	4	158	" H. M.	4	159
" Francis W.	4	158	" H. S.	4	150
" Frank	3	109	" Hannah	1	6, 8, 9, 17,
	4	158		4	154
" Frank B.	4	158	" Hannah (Delano)	1	7, 9, 17, 18
" Frank E.	4	158	" Hannah J.	4	159
" Frank Holbrook	4	158	" Hannah M.	4	159
" Frank L.	4	158	" Hannah Wade	4	159
" Frank Leroy	4	158	" Harland Everett	4	159
" Frank N.	4	158	" Harold Brewer	4	159
" Frank S.	4	158	" Harriet (Kelly)	3	114
" Frank W.	4	158	" Harriet M. M.	4	159
" Fred	4	158	" Harriet May	4	159
" Fred A.	4	158	" Harriett (Winsor)	1	8
" Fred Alton	4	158	" Harrison Edwin	4	159
" Fred C.	4	158	" Harry	2	70
" Fred G.	4	158	" Harry C.	4	159
" Fred Hilton	4	158	" Harry E.	4	159
" Fred S.	4	158	" Harry James	4	159
" Fred W.	4	158	" Harry M.	4	159
" Frederick H.	4	168	" Harry Marshall	4	159
" M/M Fred	4	158	" Harvey Cleaves	4	159
" Capt. Freeman	1	8	" Harvey M.	2	61, 67, 69
" Fritz	4	158	" Harvy	1	8, 27
" Rufus	4	158	" Harvey McKentyre	3	102
" Gardner	4	155	" Hayden Mayo	4	159
" Galen	4	158			
" Gardner N.	4	147	Soule, Hattie	3	104
" Genevieve May	4	158	" Helen	1	24, 25
" Gerald D.	4	147	" Helen ()	1	30
" George	1	1, 6, 8, 12, 13, 19, 20	" Helen	4	159
		23, 24, 25, 27, 30	" Helen A.	4	159
	2	47, 48, 50, 53, 57-59,	" Helen Elizabeth	4	159
		60-64, 66, 67, 69, 72,	" Helen F.	4	159
		74, 76, 79	" Helen Marco	4	159
	3	88, 96-99, 101, 102,	" Helen Marie	4	136
		109, 112, 113, 114	" Helen Mildred	4	159
	4	129, 132, 133, 137, 141	" Helen Sylvia	4	159
		143, 145, 148, 149, 153	" Henchman S.	3	109
		154, 155, 158	" Henry	1	8
" M/M George	2	62	" Henry	4	159
" George A.	4	158	" Henry A.	4	159
" George B.M.	4	158	" Henry Augustus	4	159
" George Bryon	4	158	" Henry C.	4	159
" George C.	4	158	" Henry Cleaves	4	159
" George Carrol	4	158	" Henry Covellard	4	159
" George Carroll	4	158	" Henry M.	1	8
" George E.	4	158	" Herbert	2	66
" George Edgar	4	158		4	159
" George Edward	4	158	" Herbert G.	4	159
" George Edwards	4	158	" Herbert Leroy	4	159
" George F.	2	66	" Herman	4	159
	4	151, 158	" Herman C.	4	159
" George Frederick	4	158	" Hilda Livinia	4	159
" George H.	2	60	" Hiram	1	27
	4	158		4	159
" George Harold	4	158	" Hiram A.	2	61, 67, 69
			" Hiram Allen	3	102
Soule, George Herbert	4	158	" Hollis A.	4	159
" George Linwood	4	158	" Hollis C.	4	159
" George Marshall	1	8	" Hollis Neil	4	159
" George N.	4	158	" Horace	4	159
" George O. D.	4	158	" Horace A.	4	159
" George S.	1	2, 20, 21	" Horace B.	4	159
	2	42, 60, 72	" Horace E.	4	159
	3	82, 110, 116, 119	" Horace F.	4	159
	4	122, 124, 126, 128, 129	" Horace M.	4	159
		130, 131, 136, 147	" Horatio B.	4	159
" George Shackford	4	158	" Horatio M.	4	159
" George T.	4	158	" Howard	2	67
" George W.	4	158		3	119
" George Washington	4	159	" Howard E.	4	136
" Georgianna ()	4	159	" Howard P.	4	159
" Georgia	4	159	" Howard S.	2	68
" Gertrude May	4	159	" Hulda	1	22
" Gertrude Pricilla	4	159	" Hulda	1	7
" Gilbert	4	159	" Ida May	4	159
" Gilbert A.	1	24	" Inez Maud	4	159
" Gilmore Weston	4	159	" Irene Francis	4	159
" Gladys B.	4	159	" Irving Dennis	4	159
" Glendon Arthur	4	159	" Irving W.	4	159
" Gleness Iillian	4	159	" Irving Willard	4	159
" Glenn	4	159	" Isaac	3	88, 101, 109, 112
" Grace	2	66	" Isaac (twice)	4	145
" Grace Maud ()	4	159	" Isaac P.	4	159
" Grace Stuckies	4	159	" Isaac T.	4	159
" Grant Wirt	4	147	" Isabella	1	8
" Greta Elaine	4	159		4	159

Soule, Isabell	1	28	" Joseph	1	6, 7, 8, 12, 14, 15, 16
" Isetta ()	4	159	" Joseph Allen8	2	17, 18, 23, 25
" Isiah	2	73	" Joseph G.	2	73, 74, 63
" Isham	2	73	" Joseph	3	63
" Ivan M.	4	159	" Josephine (Swift)	2	73
" Ivory L.	4	159	" Josiah	4	113
" J.	2	73	" Joshua	1	136, 145, 153
" J. A.	1	30	" Joyce	2	66
" J. B.	2	63	" Juane	1	6-9, 14 -19
" J. William	3	119	" Julian	4	149, 153, 154
" J. Edward	4	159	" Julia Esther	1	6, 7, 8, 12, 14-18
" Jack	4	67	" Justus	2	73
" Jacob	2	148	" Kathy	4	153
" James	4	23	" Kathy (Keleher)	1	23
" James B.	2	74	" Kenneth S.	4	136
" James Bailey	4	153	" Keziah (Gifford)	3	104
" James Collins	1	7, 8, 12, 13, 15, 23	" Larry	3	90, 109
" James Elmer	3	24, 25	" Laura Ann	1	8
" James F.	2	62, 66, 69, 74	" Laurie E.	4	151
" James G.	3	103	" Lawrence M. J.	2	66
" James H.	4	148, 155, 159	" Lawrence W.	1	22
" James K.	4	159	" Latten	2	76
" James Knox	4	159	" Leander	1	30
" James M.	4	159	" Lennon	1	?
" James R.	4	159	" Leonice	2	67
" James T.	4	159	" Levi	4	142
" James W.	4	159	Soule, Levi	2	150
" Jane	1	8	" Lewis	2	59
" Jane E.	4	159	" Lillian Irene	2	66, 71
" Jane L.	4	159	" Linda	1	73
" Janle	3	119	" Linda R. (Holmes)	4	63
" Jean Condor	2	60	" Lis (Jorgensen)	1	149
" Jean Parsons	4	159	" Lois	2	20
" Jean Paulyne	4	136	" Lois C.	1	67
" Jeanne	4	159	" Lorenzo	1	30
" Jeanette	2	71	" Lot	2	70
" Jedediah	1	9	" Lucinda	4	150
" Jefferson	4	159	" Lucretia (Hall)	4	154
" Jemima (Baker)	2	76	" Lucy	1	8
" Jemima (Butler)	2	57	" Lucy (Alden)	2	63
" Jenet	4	159	" Lucy (Ford)	1	9
" Jennie May	4	159	" Lucy (Loring)	1	9
" Jesse	4	159	" Lucy B.	1	8
" Jesse Everett	4	159	" Lydia	1	8
" Jesse H.	4	159	" Lydia (Delano)	1	6-9, 16, 17, 19
" Mrs. Jessie	3	112	" Lydia (Freeman)	1	7, 14, 16, 18
" Jennifer Anne	2	66	" Lydia (Pierce)	1	8, 19
" Jeremiah	2	63	" Lydia (Thompson)	1	8
" Joan	1	24	" Luthur	1	12
" Joanna	1	7, 18	" Lydia (Thompson)	1	7
" Joanna (Studley)	1	7, 14, 16, 17	" Marcellus	2	75
Soule, M/M Joe	3	110	" Margaret	1	8
" Joel	2	63	" Margaret ()	1	24
" Joel M.	4	159	" Margie Dorothy	1	6
" John	1	6-9, 12-19, 23, 25	" Marjorie	2	74
" John B.	2	48, 50, 57, 66, 73, 74	" Marshall	2	68
" John C.	3	88, 101, 109	" Marshall M.	1	8
" John D.	4	137, 145, 149, 152, 154, 159	" Martha	4	151
" Col. John E.	4	159	" Mary	2	68
" John Edward, Jr.	4	147	" Mary (Beckett)	1	6-8, 13, 16-18, 25
" John Frank	4	26	" Mary (Bradford)	2	66, 68
" John G.	2	43, 59, 78	" Mary (Cushman)	2	113
" John George	3	83, 89, 94, 96	" Mary (Tinkham)	4	141, 145
" John Gray	4	127, 129, 130, 135, 138	" Mary (Wadsworth)	1	6, 12, 13
" John James M/M	4	142, 147, 152	" Mary (Eaton)	2	58
" John M.	1	30	" Mary Ann (Mac Lauren)	1	8
" John N.	4	147	" Mary K.	2	18
" John Q.	4	159	" Mary Kimball	4	12
" John T.	4	159	" Maurice E.	1	12, 15
" John W.	4	159	" Mehitable (Partridge)	2	70
" Jonathan	1	7, 16, 18	" Mehitable (white)	2	62
" Jonathan	2	63	" Mercy (Fullerton)	4	62
" Jonathan	4	154	" Mercy S.	4	154
" Jonathan	4	154	" Mercy (Southworth)	1	154
" Jonathan	4	154	" Merle J.	4	150
" Jonathan	4	154	" Merle L.	1	8
" Jonathan	4	154	" Merton T.	1	8
" Jonathan	4	154	" Micah	1	7, 18
" Jonathan	4	154	" Mildred	1	8
" Jonathan	4	154	" Mildred	1	7, 10, 13, 15
" Jonathan	4	154	" Mildred	2	57
" Jonathan	4	154	" Mildred	4	147
" Jonathan	4	154	" Mildred	1	24
" Jonathan	4	154	" Mildred	4	147
" Jonathan	4	154	" Mildred	1	147
" Jonathan	4	154	" Mildred	1	7, 9, 10, 15, 19
" Jonathan	4	154	" Mildred	3	86
" Jonathan	4	154	" Mildred	4	149, 153, 154
" Jonathan	4	154	" Mildred	2	66, 67

Soule, Mildred Doyle	4	150	" Susannah	1	6
" Molly	2	73	" Susanne	1	22
" Moses	1	7, 12, 13, 15	" Susannah	4	141, 143, 152
	2	57	" Sylvanus	2	76
	3	86, 88, 89, 101, 109		3	113
	4	145	" Tabitha (Bishop)	1	9
" Moses Kimball	4	154	" Tabitha ()	2	63, 73
" Nabby	4	145	" Teters	2	73
" Nancy (Bates)	1	8	" Thedda	1	24
" Natalie Jean	1	24	" Thomas	1	7, 8, 23
" Nathan	1	7, 8, 18	" M/M Thomas C	1	22, 23
	2	59	" Timothy	2	73
	4	153	" Titus	2	73
" Nathaniel	1	6-8, 16, 18, 19, 24, 25	" Tom	1	23
	2	60-2, 67, 69, 73, 76	" Truman	4	145
	3	102, 113	" Wallace	3	109
	4	149, 153, 155	" Warren E.	4	147
" Nepheta	1	9	" Wayne A.	4	151
" Nicholas	1	8	" Wesson	1	24, 27
" Norman Alanson	3	112		2	6, 62, 67, 69
" Octavia	3	103, 104, 105		3	102
" Octavia True	3	104		4	148, 155
" Olive	1	7	" Mrs. Wilber	1	24
" Olive (Southworth)	1	7, 11		4	150
" Olive Irish	2	64	" William	1	7, 8, 9, 25
" Olive	4	154		2	57, 63, 76
" Opal	1	20		3	112, 113
" Origen Brigham	3	109		4	145, 155
" Orlando	2	63	" William, Jr.	3	86, 87, 89, 90
" Otis	1	8		4	145
" Patience	1	24, 27			
	4	153	Soule, William Bildad	3	109
" Peter Fayette	2	59		4	145
	4	147	" William Enos	3	109
" Phoebe Ann	2	63	" William George	2	66
" Philander	4	154	" William Gore	3	109
" Phyllis	1	24	" William Latten	3	115
" Pia (Jorgensen)	1	30	" Zachariah	1	6, 7, 12, 13
" Polly	1	8		2	70
" Polly (Partridge)	1	7	" Zachary	1	13
" Priscilla ()	1	8	" Zernial	1	8
" Prudence	1	8	" Zeruliah	1	7, 17
" Prudence (Loring)	1	8	Soule - Glass Co.	3	108
" Rachel	1	9, 12, 13	Soule', Bethany (Amsler)	4	155
	3	113	" Dawn Lee (Hill)	4	155
" Rebecca	1	6, 7, 9, 12, 13, 17	" Florence	4	126, 136, 155
	2	57	" Florence (Heiderman)	4	155
" Rebecca (Simmons)	1	12	" James Joseph	4	155
" Recompense	3	114	" Jeffrey Scott	4	155
" Reta	1	24	" Jenifer H. (Rupp)	4	155
" Reuben	2	64	" Jenifer Helen	4	155
" Richard	1	8	" Norman	4	136, 147, 155
" Richard Mansfield	2	66	" Norman Ralph	4	155
" Robert	2	50, 51	" Rosemary Ann	4	155
" Robert Bradley	4	150	" Robert Ralph	4	155
" Robert F.	2	60, 66	" William Christopher	4	155
" Robert F., Jr.	2	66	" William Wallace	4	155
" Robert R	2	67	Soules, Alva	2	73
" Roland P.	1	29	" Belle (Jones)	3	90
	4	147	" Bertha (Fraze)	3	90
			" Bildad William	3	101
Soule, Rose ()	2	76	" Charles Augustus	3	90
	3	102	" Charles William	3	86, 87, 89
" Ruby	1	7	" Edgar	4	148
" Ruth	1	9	" Frances-Ann (Watkins-Draper)	2	57
" Ruth (Sprague)	1	8	" Dr. Charl W.	2	68
" Sachary	1	12	" Edna K. (Francke)	2	68
" Salumith	1	8	" Fannie	3	90
" Sally	1	8	" Gertrude	3	89
" Sarah	1	7, 8, 9, 12, 13, 18	" James	3	90
" Sarah ()	1	7, 18	" Eliza Jane	3	90
" Sarah (Chandler)	1	7, 12	" Francis Marion	3	101
" Sarah (Slade)	2	76	" Jemima (Butler)	3	89
" Sarah (Standish)	1	6, 12, 13, 15	" Julia	3	88
" Sarah (Wadsworth)	1	9	" Julia Esther	2	57
" Sarah	4	141		4	145
" Samuel	7, 8, 9, 17		" Lelian (Graves)	3	90
" Sardine S.	4	149, 154	" Luther Hugh	3	101
" Sidney H.	1	25	" Luther H., Jr.	4	147
" Silas	2	72	" Mary W. (Molley)	3	90
" Silvia	1	8	" Margaret	1	24
" Silvinia	1	7, 8	" Michael R.	1	22
" Silvanus	2	73	" Nealon	3	101
" Simon	2	73	" Origen Bringham	2	57
" Simeon	1	7, 8		4	144
" Smith Nathaniel	4	137	" Sybil	4	136
" Solomon	3	112	" Sibyl Louise (Skinner)	3	101
" Stephen	1	8	" Warren	3	90
" Susan A.	1	8	" William	3	90
" Susanna	1	8	" Wilhemina (Neukon)	3	90
	2	58, 63			

Soules, William Fred	1	2	" Margaret (Cosloman)	2	76
"	2	42	" Maribe (Durfee)	2	76
"	3	82, 101	" Mary	1	25
"	4	122, 124, 127, 130, 133	" Mary A. W.	1	27
		136, 147	" Mary Belle	3	119
Souls, Almira	3	86, 89, 90	" Gerry	4	126, 136
" Almy	3	90		1	27
" Charles	3	90	" Geraldine	1	27
" Charles A.	3	87, 88, 89	" Jeanette	1	27
" Desdemona	3	90	" Luetta Scott	1	27
" Elenor	3	87	" May	2	77
" Eleanor	3	89	" May English	2	78
" Elizabeth	3	87, 89	" Nancy E.	2	61
" Frances Ann (Watkins-Draper)	3	90, 91	" Nancy Edna	1	27
" John	4	153	" Patience (Macomber)	3	114
" Julia E.	3	90	" Rebecca	2	46
" Lucy E.	3	90	" Robert	2	76
" Origen Bringham	3	90, 91	" Rosa Arilla Dean	2	77
" Eliza	3	87	" Samuel	2	46
" Ellen (Tosser)	3	90	" Sarah (Boyer)	2	63
" Fedelia	3	90	" Sharon L.	1	22
" Henry	3	87, 89	" Wesson	3	114
" Jemina	3	87	" William	3	114
" Lemuel B.	3	90	" William Henry	2	77
" Mary	3	87, 88, 89		3	114
" Mary S.	3	90	Sowle/Sowles, Hiram	2	63
" Moses	3	87, 89		4	145
" Nelson (Nealon) (Nelen)	3	87, 89	Sowles, Daisy F.	4	145
" Philander	3	90	" Dorsey	4	145
" Oscar	3	90			
" Sarah (McFadden)	3	90	Sowles, Janet	4	145
" Sarah (McKenzie)	3	90	" Jay E.	4	145
" William	3	86, 87, 89	" Ellice J.	2	63
" Warren C.	3	90	" Eunice M	2	63
Sowl, Abraham Lincoln	2	46	" Fretta	2	63
" Benjamin	2	73	" Herman Wesley	2	63
" Benjamin F.	2	46	" Hiram Howard	2	63
" Charles A.	2	46	" Jonathan Frank	2	63
" Cynthia A	2	46	" Janet	2	63
" Dela Vergne	2	46	" Leslie	2	78
" Dora ()	2	46	" Margaret	2	63
" Fred A.	2	47	" Mary Ann (Smith)	2	63
" H. T.	2	46	" Myron Leslie	2	78
" Hattie	2	47	" Rhoda Jane (Wells)	2	78
" Henry D.	2	46	" Sarah (Boyer)	2	63
" Henry T.	2	46	" Jonathan F.	4	145
" J. B.	2	46	Somerby, Horatio G.	1	11
" Jo. B.	2	46	Souther, Constant	1	9
" Joseph	2	73	Southworth, Abigail	1	10, 11
" Joseph Byron	2	47	" Alice	1	10
" Lydia M.	2	46	" Alice (Church)	1	10
" Nettie M.	2	46	" Alice (Carpenter)	1	11
" Olive (Walker)	2	46	" Andrew	1	10
" Phebe M.	2	46	" Anna ()	1	11
" Polly	2	46	" Anne	1	11
" Rhoda B. (Newton)	2	46	" Benjamin	1	10
" Samuel	2	46	" Betsy	1	11
" Samuel S.	2	46	" Betty (Fullerton)	1	10
" Sharon L.	2	46	" Betsy (Thomas)	1	10
			" Charlotte	1	11
Sowl, Sharon L.	3	86	" Christopher	1	11
" William R.	2	46	" Clynthia	1	11
Sowle, Ada	2	77	" Constant	1	6, 9, 10, 11, 19
" Allice Etle (Arthur)	2	64	" Constant	3	86
" Albert Warner	4	148	" Content	1	11
" Austin	2	77	" Deborah (Hatch)	1	10
" Bill Parker	2	64	" Desire (Gray)	1	9
" Charity (Tripp)	2	76	" Edward	1	9, 10, 15
" Charles H.	3	119		3	86
" Charles L. M/M	4	126, 136	" Elizabeth	1	9, 10, 11
" Claude R.	2	60	" Elizabeth ()	1	10, 11
" Daniel D.	2	69	" Elizabeth (Collier)	1	9, 11
" Dorah N.	2	60	" Elizabeth (Daynes)	1	11
" Dorah N.	2	64	" Elizabeth (Haughton)	1	11
" Dorothy (Geraldine)	3	102	" Elizabeth (Mollineaux)	1	11
" Durfee	2	76	" Elizabeth (Palmer)	1	10
" Ed	2	77	" Elizabeth (Reyner)	1	11
" Ellen (Austin)	2	77	" Ellen (Langton)	1	11
" Gardner	3	114	" Esther (Nash)	1	12
" Hiram	2	63	" Esther (Sampson)	1	12
" Hiram A.	2	64	" Gideon	1	10
" Hiram Allen	4	148	" Sir Gilbert	1	11
" Jack	2	64	" Hannah	1	10, 11
" Jack Harvick	4	148	" Hannah ()	1	10
" James	2	64	" Hiram	1	11
" Jeanette	3	114	" Ichabod	1	9
" Joe	2	67	" Isabel (Dutton)	1	11
" John	2	64	" Jael (Howland)	1	9
" John	4	153	" Jairus	1	11
" Joshua	4	145	" James	1	10, 11

Southworth, Jane (Boath)	1	11	" Ron	1	27
" Jane (Lloyd)	1	11	" Tania	1	61
" Jane (Mynne)	1	11		2	27
" Jasper	1	10		4	61
" Jedediah	1	10	Terry, Dr. Milton E.	1	125, 136
" Joanna	1	10		2	2, 4, 20
" Joanna (Mitchell)	1	10		2	42, 46
" John (Sir)	1	11		3	82, 85, 90, 111
" John	1	10, 11, 12	Dr. Milton	4	122, 128, 130, 138, 142
" Joseph	1	10, 11, 12			147, 152
" Josiah	1	12	Thomas, Abigail (Southworth)	1	10
" Joshua	1	12	" Betsy	1	10
" Lucy	1	10	" Harlan	4	125, 130, 136
" L. ()	1	10	" Mary	2	74
" Loraina	1	10	" Mary Josephine	1	28
" Lydia	1	10, 11	" Capt. _____	1	10
" Lydia (Warren)	1	10	" Mercy	1	10
" Margery (Butler)	1	11	" Harlan	3	119
" Mary	1	9, 10	" Nathan	1	10
" Mary Elvira	1	19	" Nina	3	119
" Mary (Fobes)	1	10	" Nina Marie	4	136
" Mary (Blake)	1	10	Thompson, John	2	75
" Mary (Pabodie)	1	10	" Leone	4	147
" Mary (Wilber)	1	10	" Lilly	1	26
" Mercy	2	57	" Lydia	1	12
" Mercy	1	7, 9, 10, 12, 13, 15, 19		2	74, 75
" Mercy	3	86, 101	Thurtle, Robert G.	4	141
" Mercy (Southworth)	2	57	Tibbitt, Hannah	3	114
" Mercy (Thomas)	1	10	Tilton, Mrs. Charlotte	1	22
" Nathan	1	10, 11			
" Nathaniel	1	9, 10			
" Olive	1	7, 11	Tiffin, Kenneth	1	2
" Priscilla	1	10		2	42
" Priscilla (Pabodie)	1	10		3	82
" Rebecca	1	10, 11		4	122, 124, 128, 130
" Rebecca (Delano)	3	86	Tinkham, Martha	1	12
" Rebecca (Pabodie)	1	10	Tolman, Abigail	1	8
" Rebecca (Simmons)	1	10	Tosser, Ellen	3	90
" Sarah	1	10	Townsend, Mary	1	8
" Sarah ()	1	10	Tripp, Charity	2	76
" Sarah (Clark)	1	11	" Francis	2	76
" Sarah (Drew)	1	10	" Wait (Chase)	2	76
" Samuel	1	10	Trumbull, Mary A.	3	114
" Stephen	1	10	Tucker, Raymond	1	22
" Susannah (Blackmore)	1	10	Turner, Gwendlyn Singrey	2	60
" Silvia	1	11	" John	3	119
" Thomas	1	6, 10, 11, 10		4	136
" Thomas Howard	1	19	" Margaret (Peggy) (Soule)	1	21
" William	1	10, 11		3	119
Spicer, Mrs. Anna Soule	1	22		4	136, 147
Sprague, Mercy	1	8, 19	" Roger E. Col. & Mrs.	2	60
" Ruth	1	8	" Roger E.	4	147
Sporing, Laurel Winslow	4	136	" Ruth	4	150
Sproat, Elizabeth (Southworth)	1	9	Uhlig, Bernardine	3	119
" James	1	9		4	136
Standish, Sarah	4	137	" Walter	3	119
" Sarah	1	6, 12, 15		4	136
" Miles	1	15	Uzzell, Mrs. Ethel	1	22
" Alexander	2	70			
Stapleton, Margaret	4	151	Vale, Laura E.	4	147
" Walter	4	151	Vaughan, Benjamin	2	70
Stetson, Joana (Soule)	1	7	" Daniel	2	70
" Lot	1	7	" Erastus Otis	2	70
Stewart, Mrs. Elizabeth S.	1	22	" Jabez	2	70
Stiles, Mary	1	5	" Lois (Soule)	2	70
Story, Elenor (Souls)	3	87, 89	" Martha	2	70
" Oliver A.	3	87, 89	" Martha (Raymond)	2	70
Stratton, Gene	4	141	" Olive (Hoyt)	2	70
Studley, Joanna	1	7, 14	" Sarah	2	70
	4	145	Vickers, Connie Sowle	4	136
Sundstrom Artancy F.	4	137	" John	4	136
Sweetzer, Elizabeth Seaver	1	8	Vickery, Sherry	2	74
" Isaac	1	8	Vine, Caroline (Platt)	1	24
Swift, Josephine	2	66	Von Sisk, Jack	3	113
Swope, Mary	2	68	" Sara Jean	3	113
			" Sheryl Miller	3	113
Talkington, Cynthia Sue	1	24	Wadsworth, Abigail (Soule)	1	7
" Joan (Soule)	1	24	" Clyntia	1	8
" Vernon	1	24	" Eden	1	7
Tarbell, Carolyn (Griffith)	2	62	" Ruby (Soule)	1	7
" Kenneth, Mrs.	2	62	" Patience	1	9
Taylor, Jeanette E.	1	25	" Mary	1	12, 15
" Lucinda	4	155	" Sarah	1	9
Tefft, Mary	2	58	" Seneca	1	7
" "	4	143	Walker, Mrs. Donald (Virginia)	4	142, 147
Teke, Jennifer	4	125	" Elizabeth (Soule)	1	6
" Christopher	2	61	" Francis	1	6
" Jennifer	2	61	" Francis	3	141
			" Mary	3	141

Walker, Olive	2	46	Whitman, Hannah	4	137
" Patience	4	141	" Nathaniel	2	62
" Mrs. Virginia	1	19			
Wall, Barry	1	30			
" Gary	1	30	Widnall, Marjorie (Soule)	2	68
" Merrill	1	30	" Dr. William Soule	2	68
" Thelma	1	30	" Dr. William S.	1	22
Warden, Dorothy	3	119	" Mrs. William Soule	2	68
Warren, Lydia	1	10	Wig, Clifford T.	2	60
Warrington, Mrs. Mildred	1	22	Wilbor, Mary	1	10
Watkins-Draper, Frances Ann	2	57, 90	Wilber/Wilbur, John	2	64
Waterman, Lydia F. (Soule)	1	8	" Sally	2	64
" Martin	1	8	Wilhelm, Dorthea	1	2, 6, 11, 12
Watts, Nancy (Blanchard)	1	27		2	42
Weaver, Mary	2	74		3	82, 86, 116
Wedgewood, Joshua	2	51		4	122, 124, 126, 136
Welter, Juane	4	137	" Dorthea May (Hall)	1	19, 20
West, Francis	2	58	William I	3	96
	4	143	William the Conqueror	3	96, 97
" Peter	4	152	William the Red	3	96
" Susanna	2	58	Williams, Charles	3	88, 89
" Sussannah	4	143, 152	" Eleanor	2	57
Weston, Alice (Southworth)	1	10		3	88, 89, 101
" Edmund	1	6, 12	" Eliza	3	114
" Elizabeth (Southworth)	1	10	" Ida May	2	74
" Ichabod	1	8	" John Insko	3	105
" Jacob	1	10	" Stephen	3	114
" Jane	1	8	Wing, Laura Ann (Soule)	1	8
" Mehetabel (widow) (soule)	1	8	" Paul	1	8
" Rebecca (Soule)	1	12	Winslow, Edward	2	48, 51, 53
" Saml. (Samuel)	1	10	" Jno.	1	6
White, Alburn C.	3	113	" Laurel	4	136
" Charles A.	3	113	" Lawrence	4	136
" James L.	3	113	" Mary Grace	4	136
" Mehitable	1	8	Winson, Nathaniel	1	7
" Nina Lorraine	3	113	" Olive (Soule)	1	7
Whitcomb, Col. Asa	3	88	Winslow, Thomas G. Soule	4	136
Whitecotten, Betty	1	2	Winsor, Harriet	1	8
	2	42, 57	" Justin	1	6
	3	82, 90, 109	Wise, George	3	105
" Glenn L.	1	122, 123, 144, 145	Wisegarver, Barbara	2	67
	2	2, 3	Wiser, Lawrence	2	74
	2	42, 43, 57	" Theresa Ann (Heinerkison)	2	74
	3	82, 83, 86, 90, 95	Woods, James	2	60
	4	122, 123, 124, 127, 128	" Peter	2	60
		129, 130, 144	Woolin, Eliza Jane (Soules)	3	90
" Grace (Oralee) (Young)	2	57	" Wesley J. (Jack)	3	90
	4	144	Wright, Adam	1	6, 12
" John	2	57	" Sarah (Soule)	1	12
	4	144	Wyman, Loriana (Southworth)	1	10
" John Paul	2	57	" William	1	10
	4	144			
" Kenneth	3	80	Young, Grace-Oralee	2	57
	4	144			
" Matthew	2	57			
	4	144			
" Tim	4	144			

Place Index
Soule Kindred Newsletter
Vol. XVI - 1982

Arizona, Mesa	1	22
Tucson	3	110
California, Glendale	1	22
LaJolla	2	22
Oakland	2	22
Redlands	2	22
San Jacinto	4	149
Vista	2	22
Canada, Guelph	4	151
West Vancouver	4	151
Colorado, Denver	1	24
Connecticut, New Britain	1	24
New Haven	1	25
Southington	1	22, 24
Florida, Dunedin	4	150
Forest City	1	30
Fort Myers	4	144
Jacksonville	1	30
Largo	4	150
Ocala	4	155
Pensacola	1	22
	2	44
	3	119
Sunrise	2	62
Tampa	3	119
Illinois, Rock Island	3	113

Indiana, Indianapolis	1	21, 27, 28	New York, Albany	1	2, 22
	2	42		2	42
	3	82		3	82
	4	122		4	122, 143
Muncie	2	57	Blenheim	3	111
Richmond	2	57	Erie Co.	4	114
Terre Haute	2	57	Green Co.	3	112
	3	87, 109, 144	New York City	1	22
Iowa, Des Moines	1	22	Rochester	1	22, 24, 25
Rock Rapids	1	26	Oneonta	2	58
Kansas, Eureka	1	24	Schenectady	1	2
Maine, Freeport	4	150		2	42
Massachusetts, Holliston	1	2		3	82
	2	42		4	122, 142
	3	82	Schoharie Co.	3	114
	4	122	Scotia	1	22
Boston	1	6	Silver Creek	1	22
Bridgewater	1	7			
Brockton	1	25	North Carolina, Hendersonville	1	22
Centerville	1	6, 11	Ashville	2	73
Duxbury	1	6, 13, 18	Bladen Co.	2	73
	2	42	Columbus Co.	2	73
	3	82	Brunswick Co.	2	73
	4	122, 141	Duplin Co.	2	73
Lexington	1	22	Hammond Creek	2	73
Marshfield	1	14	Swan Creek	2	73
Middleboro	1	14	Ohio, Cincinnati	1	3
North Dartmouth	1	25		2	42, 44, 45, 47, 53, 54
North Dartmouth	4	152		3	55, 56, 61, 65, 79, 80
				4	83
Massachusetts, North Yarmouth	1	7	London	4	122 thru 134
Norwell	1	25	Spring Valley	3	154
Pembroke	1	22	Oklahoma, Enid	2	113
Plympton	1	6			60
Vineyard Haven	1	11	Oklahoma, Frederick	4	149
Waban	1	22	Pennsylvania, Arlington	1	24
Westport	1	27	Wallingford	1	25
Woodbridge	1	25	Warren	4	150
Plymouth	1	20	South Carolina, Charleston	2	60
Michigan, Lansing	1	22, 23	Tennessee, Knoxville	3	117
Minnesota, Minneapolis	1	2	Texas, Corpus Christi	1	2
	2	42		2	42
	3	82		3	82
	4	122, 150	Galveston	4	148
Mississippi, Pascogoula	3	110	Lorena	1	2
Missouri, Kansas City	2	74		2	42
New Jersey, Hunterdon Co.	1	5		3	82, 101
Mountainside	1	2		4	122
	2	42	Vermont, Bethel	1	28
	3	82	Danby	3	114
	4	122, 138	Randolph Center	1	28
Sussex Co.	1	5	Virginia, Alexandria	1	26
Tabor	1	25	Washington, D. C.	1	2
Trenton	1	4		2	42
New Mexico, Las Cruces	2	68		3	82
Los Alamos	2	57	Wisconsin, Milwaukee	4	122, 136
	4	122		1	2
Santa Fe	2	60		2	42
	4	123		3	82, 111, 112, 114
				4	122, 141
MAINE - Vital Records	4	155, 156, 157, 158, 159			
ENGLAND, Hertfordshire	1	22			
Worcestershire	2	48			

ORDER FORM

SOULE KINDRED NEWSLETTER \$2.50 per issue; \$10.00 per year

I enclose \$ for copies of back issues as checked:

- | | | | | | | |
|----------------|-------|-------|-----------------|-------|-------|-------|
| 1967-V.1 #1() | #3() | #4() | 1975-V.9 #1() | #2() | #3() | #4() |
| 1968-V.2 #1() | #2() | #3() | 1976-V.10 #1() | #2() | #3() | #4() |
| 1969-V.3 #1() | #2() | #3() | 1977-V.11 #1() | #2() | #3() | #4() |
| 1970-V.4 | | #3() | 1978-V.12 #1() | #2() | ##() | #4() |
| 1971-V.5 #1() | #2() | #3() | 1979-V.13 #1() | #2() | #3() | #4() |
| 1972-V.6 | #2() | #3() | 1980-V.14 #1() | #2() | #3() | #4() |
| 1973-V.7 #1() | #2() | #3() | 1981-V.15 #1() | #2() | #3() | #4() |
| 1974-V.8 #1() | #2() | #3() | 1982-V.16 #1() | #2() | #3() | |

NAME: STREET ADDRESS: CITY: STATE: ZIP:

SOULE KINDRED REUNION 1983

MAKE PLANS NOW TO ATTEND

**Thursday evening, July 7th
through
Sunday, July 9th**

at

**SHERATON-SANTA FE INN
750 North St. Francis Drive**

**Details beginning Page 4
Reservation Information Enclosed**

SANTA FE NEW MEXICO



**ADDRESS CORRECTION REQUESTED
RETURN POSTAGE GUARANTEED**

**SOULE KINDRED IN AMERICA, INC.
P.O. BOX 1146
DUXBURY, MA 02332**



**BULK RATE
U.S. POSTAGE
PAID
Permit No. 1**

Join SOULE KINDRED IN AMERICA, INC. now.