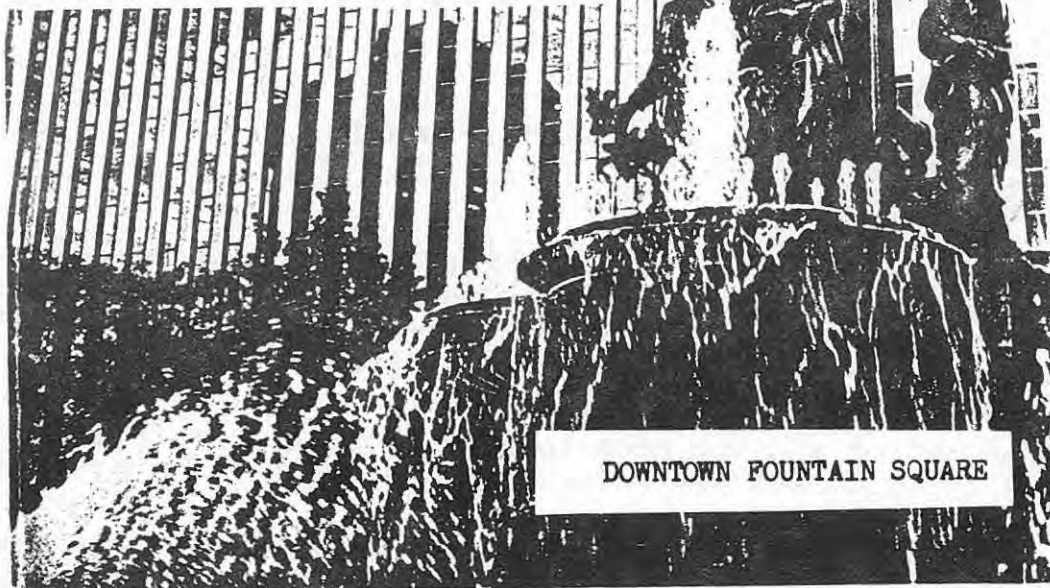


# SOULE NEWSLETTER

Library of Congress No. C 371, S. 717, Volume XVI, No. 2, April, 1982, Page 41  
Published by Soule Kindred, Inc., P.O. Box 1146, Duxbury, Massachusetts 02332

WELCOME  
TO CINCINNATI

1982 Soule Kindred Reunion  
Cincinnati, Ohio  
July 29th - August 1st



DOWNTOWN FOUNTAIN SQUARE



The SOULE KINDRED NEWSLETTER is published quarterly (January, April, July, and October) by Soule Kindred in America, Inc. Dues are \$10.00 per year; subscriptions will begin with the first issue of the current year. Late subscribers will be sent back issues for the current year. Subscriptions with checks made payable to Soule Kindred should be sent to the following address:

# Soule Kindred

P. O. Box 1146  
Duxbury, Mass. 02332

Life Membership . . . \$100.00  
Patron Membership . . . 50.00  
Sustaining Membership . . . 25.00  
Regular Membership . . . 10.00

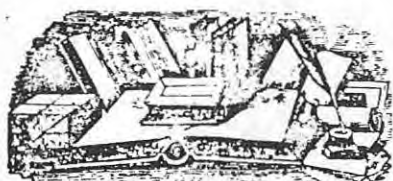
SOULE KINDRED OFFICERS \* \* \* \* \*

- PRESIDENT . . . . . Glenn L. Whitecotten, M.D., 103 King, NAS, Corpus Christi, TX 78419
- FIRST VICE PRESIDENT. . . . . Kenneth C. Tiffin, 50 Highland, Holliston, MA 01746
- SECOND VICE PRESIDENT . . . . . Ben George Soule, 7405 Queen Avenue South, Minneapolis, MN 55423
- TREASURER . . . . . Betty-Jean Haner, 1491 McClellan St., Schenectady, NY 12309
- HISTORIAN . . . . . Dr. Milton Terry, 381 Creek Bed Rd., Mountainside, NJ 07092
- MEMBERSHIP SECRETARY. . . . . Mrs. Paul (Avis) Haner, 53 New Shaker Rd., Albany, NY 12205
- SECRETARY to the BOARD. . . . . Mrs. Thomas (Marian) O'Connell, 2027 Allen Place, N.W., Washington, D.C. 20009
- NEWSLETTER EDITOR . . . . . Mrs. James (Geraldine) Schlosser, 3060 N. Hackett Ave., Milwaukee, WI 53211
- NEWSLETTER PUBLISHER. . . . . W. Fred Soules, P.O. Box 250, Lorena, TX 76655
- NEWSLETTER INDEXER. . . . . Mrs. Frank (Mary) Crismore, 3139 West 51st Street, Indianapolis, IN 46208

BOARD OF DIRECTORS

<u>Class of 1982</u>	<u>Class of 1983</u>	<u>Class of 1984</u>
Glenn Whitecotten	Opal Soule Manly	Dan Pearce
George S. Soule	Linda Preston	Mary Kelly
Irene Jones	Betty Whitecotten	Dorothea Wilhelm

\* \* \* \* \*



FROM THE EDITOR. . . .

We are starting a new feature in this issue-- "Meet Your Officers". The first to be featured are President Glenn Whitecotten, Treasurer Betty-Jean Haner, and Board Member Linda Preston, who is hosting the 1982 reunion. We hope that in this way you readers will get to know the people who are running your organization.

Thanks to all of you who send in news items and articles. Keep them coming ! I try to put all information in the Newsletter as soon as I receive it.

You will find in this issue many items intended to encourage you to attend the Reunion in Cincinnati. Linda has spent a good deal of effort planning an interesting time for us. Make your plans now to meet your Kindred-- and "Meet Cincinnati".

*Geraldine Soule Schlosser*

## President's Corner...

### Colonel John E. Soule memorial Fund:

Several suggestions have been made, and among them are such items as commissioning an oil protrait of the Colonel which would be placed in the Soule Kindred office in the Drew House, Duxbury. Another suggestion was to use the fund to purchase the Soule Family, Volume III for distribution to needly libraries around the county. One thought that incurred no expense was to name the scholarship fund in honor of the Colonel. I encourage all of our members to give some consideration to this project and to send your suggestions to the Newsletter Editor. The use of these funds will be discussed and a disposition will be made at the reunion business meeting in Cincinnati.

### Our New Office in Duxbury:

Soule Kindred in America, Inc. has leased the southwest room on the second floor of the Drew House in Duxbury. The new space will serve not only as an office, but as a storage facility as well. The rental fee is \$125.00 per month. Mrs. Sabina Crosby has been engaged to sort mail, forward copies of the newsletter, etc.; her salary is \$75.00 per month. All members are encouraged to use the new office services. If, however, you have material for a particular Kindred officer, please sent it directly to that person, thus saving the expense of postage on forwarded material (eg. newsletter items should be sent directly to the newsletter editor). Whenever in doubt, please feel free to use the office, and Mrs. Crosby's services.

### Scholarship Fund:

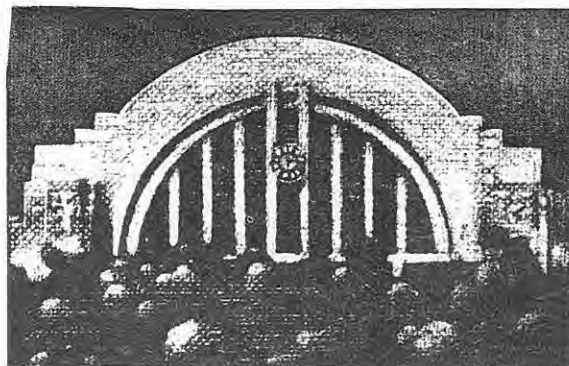
Another item for discussion at the reunion will be the scholarship fund. I am hopeful that this spring we can make some progress on the mechanics of awarding a scholarship and present the methodology for discussion at the reunion.

I look forward to seeing ALL of you at the Cincinnati reunion this summer.

*Glenn L. Whitecotton*

## MEET CINCINNATI

With the shops and boutiques in fashionable Hyde Park, the major downtown department stores and designer shops which are joined by the skywalk, the unique atmosphere of the establishments in Union Terminal, and the huge suburban malls, Greater Cincinnati is a shopper's paradise.



LINDA SOULE PRESTON

2340 GRANDVIEW AVE.

CINCINNATI, OHIO 45206

(513) 281-4774

March 1982

Dear Soule Kindred,

The spirit of this summer's Cincinnati Reunion is to bring together old and new Kindred members with renewed vigor while sharing with you some of the flavor of the "Queen City". (Meet Cincinnati elsewhere in the Newsletter.) This was my intent last fall in Plymouth when I offered to host the 1982 Reunion in Cincinnati.

Not being a native makes it easier for me to brag about the town. I first came here to attend a teacher's workshop at Mercy Center in 1971 and was so taken with the facilities and with the town that I returned the following year to teach and have been here ever since. (Find information on Mercy Center elsewhere in this issue.)

Hopefully with the Reunion we might also locate new Soule Kindred in the area. Without any relatives nearby, I would be most grateful to learn of any volunteers who might be able to help with Reunion arrangements as well. If so, please contact me at the above address or leave a telephone message for me in care of Mercy Center-513-221-1800.

Cousin Mary Dawkins in Pensacola, experienced from the '79 Reunion, has offered to help preparing name labels in advance, including lineage. Please mail that information directly to: Mary Dawkins (Mrs. W.L.)  
2020 East Bobe Street  
Pensacola, Florida 32503

She is also preparing a follow-up slide presentation to the Soule History one and asks for any slides from previous reunions or photographs suitable for making into slides, sent to her as well (*with names included*).

Let me add that son John Soule Preston (soon to be 15) will be on hand and young people are encouraged to attend. There will be special activities planned with them in mind. Cincinnati Reds fans may look for special ticket ordering information.

In closing let me say that I hope to welcome as many of you as possible to Cincinnati this summer! The most important request from all would be to receive the PRE-REGISTRATION FORM & INFORMATION as soon as possible. This is in order to secure tour arrangements at the most reasonable rates and to plan for accommodations.

Thank you,



# 1982 Soule Kindred Reunion

## Cincinnati, Ohio

### July 29th - August 1st

REUNION HEADQUARTERS: **mercy center** 2335 Grandview Avenue, Cincinnati, Ohio 45206  
Telephone: (513) 221-1800

#### AGENDA:

Thursday Evening July 29th	6:00PM to 9:00 PM	Registration-Check In-Welcome (Large indoor pool available)
Friday AM July 30th	8:00 to 9:00 AM	Breakfast-Late Registration Tour Arrangements
	9:30 AM to 12:30	Queen City Bus Tour of historic landmarks and points of interest, including several stops: Rare Book Collection & Archives at Hebrew Union College, The Taft Museum, Krohn Conservatory & Lunch atop picturesque Mt. Adams at the restored "Rookwood Pottery Restaurant".
	Tour - \$4.50 (Casual attire)	
	Lunch- approx \$4.00	
Friday Afternoon		Free time with optional activities available, including nearby shops and walking distance to the Historical Society. Indoor swimming at Mercy. If interested, an alternate tour to the Cincinnati Zoo may be arranged.
Friday Evening	5:30PM to 6:30PM	Wine & Welcome before Dinner
	6:30PM Dinner \$6.00	Mercy Center Dining Room Followed by the Annual Meeting (Dress - festive)
Saturday AM July 31st	10:00AM to 2:00 PM	Queen City Tour continued, including the newly opened Fire Museum and Union Terminal with shops to visit and lunch.
	Tour - \$4.50	
Saturday Evening	7:00PM to 10:00PM	Dinner Cruise on the Ohio River (aprox. \$17.00, depending on nos.) aboard the "Betty Blake" or shipboard dinner without the cruise aboard the "Mike Fink". (\$12.00)
Sunday AM August 1st		Church of your choice - Brunch - options available to include restored historic village at Sharon Woods, Kings Island Family Entertainment or the Cincinnati Reds at Riverfront Stadium, playing the San Diego Padres at 2:15PM. (see elsewhere for ordering REDS Tickets by mail).

## FROM THE SOULE FAMILY HISTORIAN, DR. MILTON E. TERRY

A query from cousin, Sharon L Sowl of Central City Nebraska about the identity and ancestry of Henry T. Sowl has led to the discovery of the family Bible, and detailed family data which will be filed. The early part of the family record is all in the same handwriting, but the latterpart was written by many. Many of the descendants went to Fullerton and Kearney Nebraska

Family Bible of Henry T. Sowl, [prob. b. Broadalbin N.Y.; son of Samuel and Rebecca Sowle (page 213 Soule Family).

Henry T Sowl was born Aug 28th A.D. 1803.  
Olive Walker was born may 12 A D 1804.  
Rhoda B. Newton 2nd Wife of H T Sowl was born Sept. 14th 1823.  
Polly Sowl was born July 2nd A D 1823.  
Infant was born may 22nd 1825.  
William R Sowl was born Oct 19 1827  
Charles W Sowl was born July 13th A D 1829.  
Phebe M Sowl was born Apr 19th A D 1831.  
Henry D Sowl was born July 20 A D 1833  
Cynthia A Sowl was born A D 1835  
Lydia M Sowl was born May 23? A D 1888 (sic) [1838?]  
Dela Vergne Sowl was born Oct 4 1841  
J B Sowl was born Aug 14th A D 1855  
Benjamin F Sowl was born May 26th A D 1856  
Samuel S Sowl was born Apr 10 A D 1860  
Abraham T? Sowl was born Oct 6th A D 1863  
Samuel Sowl senior was born May A D 175?  
Rebecca Norton was born May 12th 1778.

These last two entries confirm the identification of Henry and identify Samuel's wife.

## MARRIAGES

Henry T and Olive Sowl were married Oct 4th A D 1822  
Jo. B and Nettie M Sowl were married May the 16 A D 1878  
Benj F and Nancy Sowl were married June 2nd A D 1878  
Saml S and Dora Sowl were married Dec 24 1885

## DEATHS

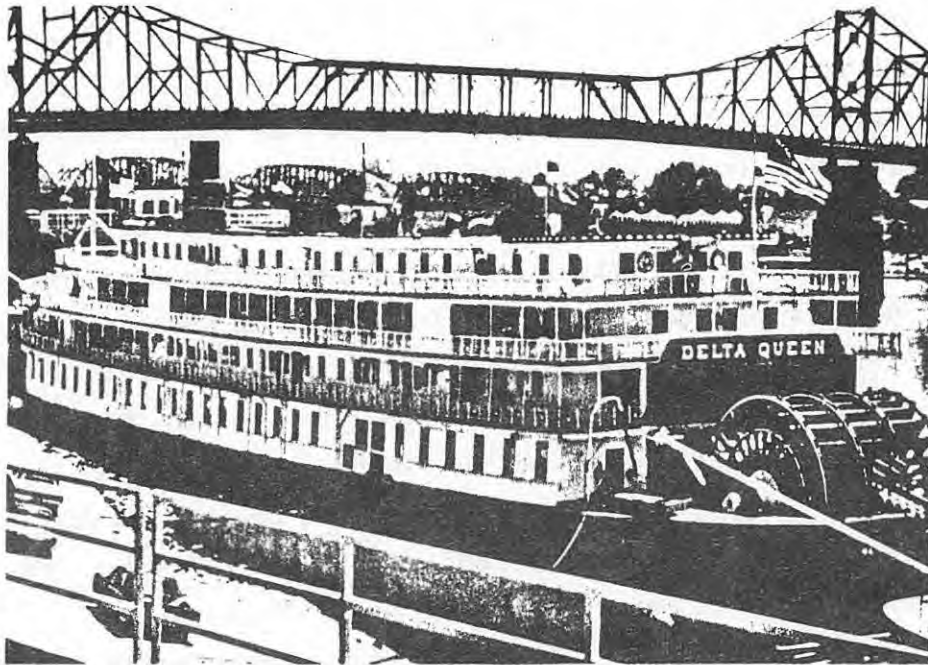
Henry T Sowl died June 9th A D 1881  
Olive Sowl died Oct 2nd A D 1848  
Polly Sowl died May 12th A D 1825  
Samuel Sowl sen died Nov. 1836. (see page 213).  
Rebecca [Norton] Sowl died January 14h 1844  
Infant Daughter died May 22nd A D 1825  
Abraham Lincoln Sowl died July 31st A D 1887  
Samuel Angier [d] May 10th 1893  
Rhoda B Angier May 6th 1910.  
B Franklin B Sowl died Aug 1 1918 aged 62 years 2 months.  
Dora --- died Apr 10th 192-  
Samuel S Sowl died Apr 13, 1931

Joseph Byron Sowl Died Aug. 29, 1940 Aged 87 years 17 days  
Theda Powers Died March 20 1931  
Hattie Sowl Gay April 1943  
Fred A Sowl JAN 7, 1912

to be continued

\*\*\*\*\*

M  
E  
E  
T



C  
I  
N  
C  
I  
N  
N  
A  
T  
I

The world-famous Delta Queen claims Cincinnati as its home port.

\*\*\*\*\*

March 24, 1982

Dear Mr. Sowle

THE SOWLE FAMILY HERITAGE BOOK is being published on Apr. 21. It is a guide to the discovery and documentation of your personal and family heritage.

I have spent thousands of dollars and months of work to research through 70 million families and I have located almost every SOWLE FAMILY in these United States.

The SOWLE name is very rare, and my research has shown there is only about one SOWLE family for every quarter million Americans.

Because of this rarity, THERE WILL BE ONLY ONE EDITION: It is limited to one book per household, and it will be printed only on your specific order. Requests for this single printing must be placed before Apr. 21. Orders posted after this date must be declined.

*Beatrice Bayley*

WARNING

The accompanying message has been sent recently to persons named SOWLE. Be assured that this is not a family history or genealogy, but merely a listing of names and addresses of people with the surname SOWLE, along with a few pages on how to trace your family.

See Soule Kindred Newsletter, Vol. XV, No. 2, April 1981, page 50 for more information about the fictitious "Beatrice Bayley".

For an authentic family history, Kindred members are advised to purchase Mayflower Families 3 - George Soule.

-- Editor's Note

THE STORY OF GEORGE SOULE  
by Mrs. Edwin S. Harris

CLOSE PROXIMITY OF WINSLOW AND SOULE FAMILIES IN WORCESTERSHIRE.

According to the research of both Ridlon and Banks, the families of the two men, Edward Winslow and George Soule, lived in the area of the city of Worcester on and before the time they came to the New World. The maps shown are maps from the ROAD ATLAS OF GREAT BRITAIN, PRINTED BY Johnson and Bacon, Edinburgh and London. These maps do not show the rivers. It may be well to keep in mind that the Severn flows through the city of Worcester on to Tewksbury where it meets the Avon. The Avon flows past Evesham close by Eckington. Though the mileage is not the same scale for both maps, it seemed wise to include both for study as some cities are not listed on both.

In the area encompassed by dwelling places of Soule/Sole and Winslow families, the distance North and South is no more than 15 to 20 miles. The distance East and West is not more than 5 to 6 miles. If Eckington is the home of George Soule, with a young man being as they are today and always, they must have had some contact in their own county. Further examination shows their chances of knowing each other is most likely. The following are names and places you may wish to check with the maps.

DROITWICH- Where Edward Winslow Sr. reared his family. It is the birthplace of Edward Winslow of the Mayflower.

KEMPSEY-Property in the town of Kempsey was associated with the Grandfather of Edward Winslow.

KERSWELL- The estate of Winslows. The same name was given to the Marshfield estate of Edward Winslow's son. It still stands in Marsfield near Plymouth, Massachusetts.

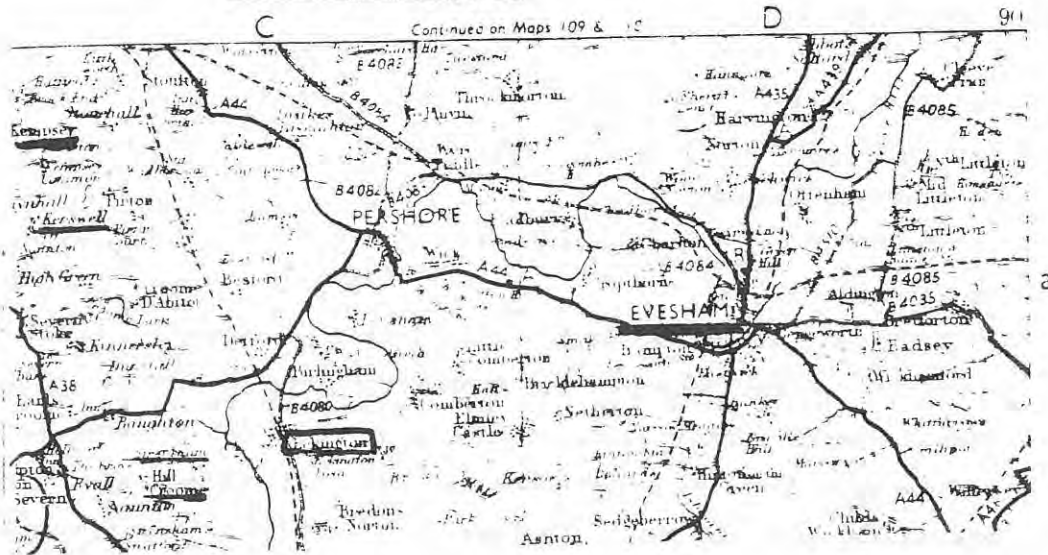
CROOME -Across the Avon River from Eckington; Banks listed home of George Soule. This land was purchased by Winslow's Grandfather and was a family seat.

WORCESTER- The county seat of Worcestershire. It is where Edward Winslow attended the King's School. It is also the city where John Soule, tentative father of George Soule, was mayor.

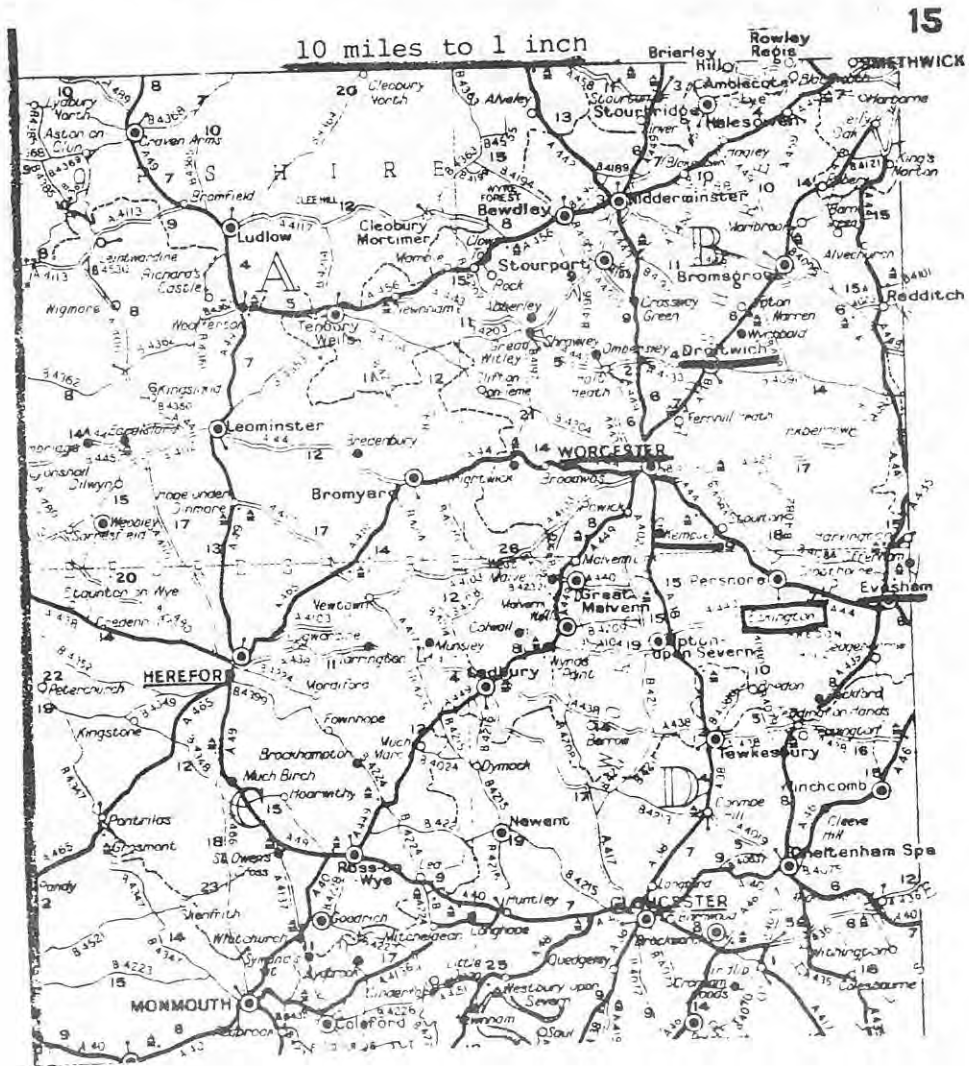
LONDON- Edward Winslow had many important connections in high places in London.



3 miles to 1 inch



10 miles to 1 inch



## SOULE FAMILIES

ECKINGTON- Most likely birthplace of George Soule, but so far no positive record of birth record has been found. Many church records were lost in an early day fire. It was the home of Robert Soule, wealthy salter whose business was in London.

WORCESTER- John Soule, mayor, tentative father of George Soule according to Banks.

STRENSHAM - Home of Soule Sole families for years.

EVESHAM- About three miles from Eckington. It is the location of a "Great House" left to a George Soule in the will of Robert Sole, Salter, in the year 1591. Also mentioned in his will, he left the "mysteries" of the salter process to the "Keepers and Wardens of the Commonality of the Art or Mystery of Salters."

DROITWICH- Did the saline waters at Droitwich hold the secret of a brine curing process for the curing of meat? Had smoking and drying been the mode of preserving meat before the time of Robert Soule? Was this kinsman of George the person who made brine curing popular? It is possible. The Englishmen that Squanto and Samoset met on Monhegan Is. came to that place each year to bring their harvest of fish ashore for smoking to preserve it for the trip back to England. The Indians of America smoked their meat. This writer at this date has not been able to discover when the preserving of meat by the brine method was first used. Perhaps some other Soule descendant will trace the use of brine in Britain.

LONDON- Robert Sole-Soule, wealthy salter with his place of business located on Bread Street, London, in 1591 left to a George Soule a "Great House" in Evesham. This George was his son.

ENGLISH COUNTIES ILLUSTRATED, Oldham Press, London, 1948. This book mentions Droitwich: "Droitwich owes its present day fame to a nineteenth century discovery. Droitwich has salt springs whose saline content is ten to twelve times that of the ocean. In the Droitwich baths it is impossible not to float. But until 1832 nothing medicinal was done about them.

In that year there was a serious outbreak of cholera. Owing to the shortage of fresh water, brine baths were used for the sick. The effect was magical. The mortality rate among the cholera patients dropped at once. Droitwich's value as a health resort had been established."

Did Robert Sole make his fortune salting meat for the navy during the reign of Elizabeth I? Could it have been his casks of brine made salty enough to float the meat and preserve it, as he had learned about the salt springs in Droitwich, that served the English in the Battle of the Armada in 1588? It is entirely possible.

This Robert was granted arms by the Crown. Usually arms are granted for great feats of valor or discovery which have brought aid or honor to the country. Even though he came originally from an obscure village and may not have been titled in any way, it was possible even in that day for such a man to achieve high honor in England. Robert Sole lived in the period after the dissolution of the monasteries. At that time the ecclesiastic counties underwent a great change. Worcester shire was almost entirely church owned with monastic orders dominate in the county. After Henry VIII dissolved the Catholic Church and destroyed the monasteries, he gave or sold the lands to favorites or otherwise disposed of them to bring money into the Crown coffers. This brought about great social upheaval which makes it seem quite likely that Robert Sole could have come from the small village of Eckington with a bright idea and made his fortune in London.

In the days of Edward Winslow and our George the city of Worcester was a center in the country of the clothing trade. The famed porcelain works we know of today did not come until 1751 when Joshua Wedgwood began his factory.

There were before the dawn of later history, a number of local industries in Worcestershire other than the thriving wool trade. These industries were scattered rurally all over the county. In particular many cottages were engaged in the making of nails and scythes. From very early days glove making has been a staple industry. In the thirteenth century records there is mention of a Glovemakers Street. The Glove Makers Guild was incorporated in 1497.

In the days of the Pilgrims the whole of England was agrarian. There were great forests and many scattered villages. Worcestershire was

noted mainly for its fruit which was harvested in abundance. The area surrounding Eckington as described by the writer of the guide book: "The Pershore plum, the Worcester apple, the blossom in the gardens of the Vale of Evesham--these are still after 600 years the most famous of Worcestershire's products. Worcestershire means to most of us the orchard land of Western England, soft in landscape, rich in soil, mild in climate, a gentle land through which the broad Severn flows."

However it may have been that these two young men became acquainted before leaving England, it is well that we explore how accessible villages were to each other in the 16th and 17th Centuries.

The main arteries consisted of the Roman roads which were by that date, in a bad state of repair and much overgrown. The well known Roman thoroughfare called Watling Street ran from Worcester to London. Not much maintenance had been done since its overhaul in the time of King John in early 1200! At the time of those repairs the roads were already 1000 years old! Add 600 years of neglect since King John and it is easy to understand how there were deep pot holes, quagmires, and some places so overgrown as to be impassible.

How then, did the people of the villages and farms come together? The rivers and canals were used for heavy trade, but for the majority of the country folk there was an excellent mode of travel within the county. There was an ingenious network of trails or tracks within each county throughout the whole of England. These short cut trails are called "tracks" or "green roads" by the English today, and some of them still exist. In their years of disuse they have become long green ribbons of grass as they wind through the back fields and by-ways of today. Only citizens of the county knew their own short cuts. If a stranger entered an unfamiliar county it was necessary for him to hire a guide or become completely lost. These back roads, about two carts wide, were a boon to the people. Communication with neighboring associates and small business was made quite simple. The main roads were beset by bands of brigands who attacked unsuspecting travelers and relieved them of their goods and money.

The days of the individual highwayman had not yet dawned. The only mode of travel was by foot or horseback. This applied to men and women. The stage wagon was not yet in use except close to London.

These trails and paths would have been well known to Edward Winslow and George Soule. They would have met their friends and acquaintances as well as others along the tracks.

In passing it might be interesting to mention that when this writer lived in England she was introduced to a "green road" in Norfolk County. This ancient track was named, THE PEDDAR'S WAY. It was a road of flat green grass that led inland from the North Sea. It was said to be haunted by a great ghost dog named BLACK CHUCK who wandered the lonely trail, and was often heard to howl on moonless nights!

For further reading:

Burke, Thomas, TRAVEL IN ENGLAND, B.T.Batsford Ltd., London, 1942.

Tannahill, Reay, FOOD IN HISTORY, Stein and Day, New York, 1973.

Barbour, Philip L., THE THREE WORLDS OF CAPTAIN JOHN SMITH,

Houghton Mifflin, Boston, 1964.

Day, J. Wentworth, NORWICH AND THE BROADS, B.T.Batsford Ltd., London, 1953.

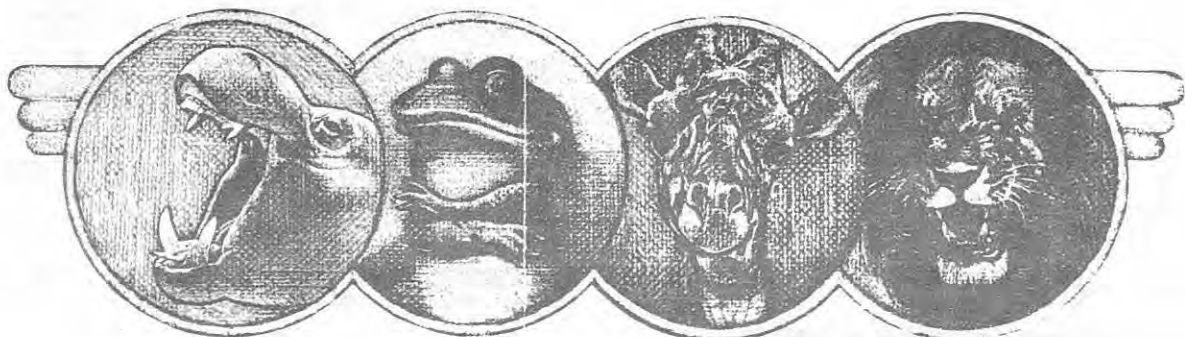
Bernard E. Dorman, NORFOLK, B.T.Batsford Ltd., London, 1972.

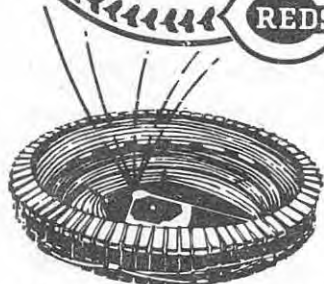
\*\*\*\*\*

### MEET CINCINNATI

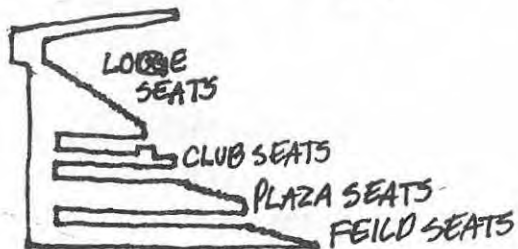
The Cincinnati Zoo is rated one of the top five zoos in the country. It houses over 2500 animals, including the most complete insect exhibit in

the United States, and extremely rare white tigers. It's open every day of the year. There is an admission charge.





cincinnati reds.



The Cincinnati Reds will be hosting the San Diego Padres on the weekend of July 30 - August 1 as follows:

FRIDAY July 30 7:35 P.M.  
SATURDAY July 31 5:35 P.M. (Double Header)  
SUNDAY Aug 1 2:15 P.M.

Please Order Directly from the Reds Office IF you would like to see a Reds game while in town.

HOW TO ORDER BY MAIL:

1. Specify date of games and the number and price of tickets desired.
2. Make check or money order payable to The Cincinnati Reds (no cash, please).
3. Add \$1.00 postage and handling.
4. Mail to The Cincinnati Reds, Box 1970, Cincinnati, Ohio 45201

REDS TICKET PRICES

BOX SEAT, Field, Plaza, Loge ... \$6.00  
 RES. SEAT, Plaza, Loge ..... \$5.00  
 CLUB BOX SEAT ..... \$8.00  
 \*LOGE RESERVED SEAT ..... \$3.00

\*On sale 3 hours before game time.

mail order identification number

PLEASE PRINT:

NAME \_\_\_\_\_

ADDRESS \_\_\_\_\_

CITY \_\_\_\_\_

STATE \_\_\_\_\_ ZIP \_\_\_\_\_

\*PHONE (office) \_\_\_\_\_ (home) \_\_\_\_\_

PREFERRED LOCATION \_\_\_\_\_

\*PLEASE USE BOTH NUMBERS AS IT MAY BE NECESSARY TO CONTACT YOU REGARDING YOUR ORDER.

\_\_\_\_\_ Seats @ \$6.00 ..... \$ \_\_\_\_\_  
 \_\_\_\_\_ Seats @ \$5.00 ..... \$ \_\_\_\_\_  
 \_\_\_\_\_ Seats @ \$8.00 ..... \$ \_\_\_\_\_  
 Postage/Handling ..... 1.00

TOTAL ENCLOSED ..... \$ \_\_\_\_\_



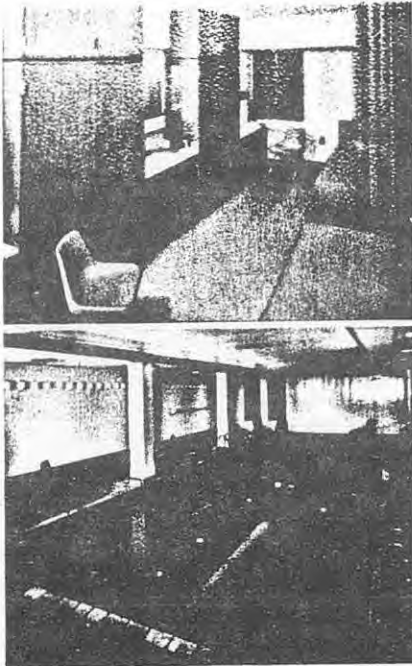
USE YOUR CREDIT CARD

MASTERCARD  VISA



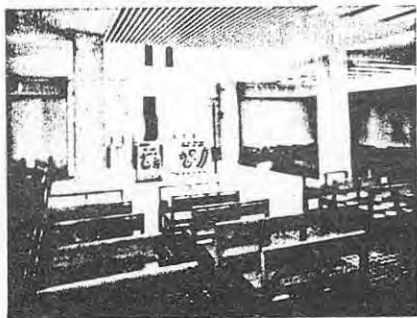
Acc't. No. \_\_\_\_\_

Exp. Date \_\_\_\_\_



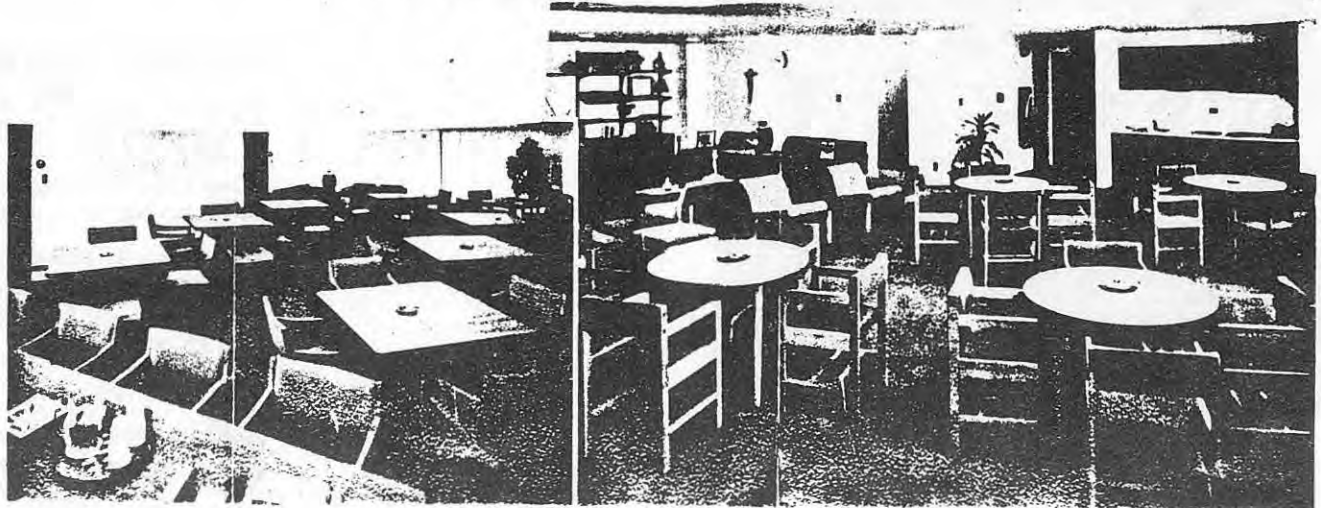
**MERCY CENTER PROVIDES COMPLETELY AIR-CONDITIONED FACILITIES:**  
 Guest rooms for 68 persons,  
 single — double — suites

**DINING ROOMS • LOUNGES • CONFERENCE ROOMS • CHAPEL • INDOOR SWIMMING POOL • GYM-AUDITORIUM • LARGE RIVER-VIEW PATIO**



Mercy Center is a quiet, picturesque site

The five level building is surrounded by a natural wooded setting with the shops, entertainment and activity of the city only minutes away.



FOR THOSE WHO MIGHT WANT TO CAMP \*\*\*\*\*

AN ALTERNATE SITE\*\*\*\*\*

## KINGS ISLAND CAMPGROUND OPEN YEAR ROUND at Kings Island Theme Park CINCINNATI, OHIO

### ENJOY OUR FAMILY CAMPING RESORT, ADJACENT TO FABULOUS KINGS ISLAND THEME PARK:

- 65 landscaped acres ~
- 350 sites (many pull-throughs)
- Three-point hookups
- Tables and grills
- Bath House
- Olde General Store
- Snack bar
- Video game room
- Guest laundry

- Propane
- Security Patrol
- Pets on leashes accepted
- Monitor CB channel 15
- Firewood

### FREE SHUTTLE SERVICE TO:

- Kings Island Theme Park
- College Football Hall of Fame
- Kings Point Inn  
(Free stocked fishing pond)  
(Kings Point Pub & Rest.)
- The Factory Outlet Mall  
(Open Autumn '82)

### 1982 RATES

April 1-October 31: \$13.00/day for family of 2 with picnic table and grill; each additional person over 2 years of age, \$2.50; water and electric \$4.50; sewer \$1.50. Reduced winter rates November 1-April 1-\$8.00 for family of 2. Check out time 12 noon. Cancellation fee \$3.00. Friday and Saturday reserved together.

### KINGS ISLAND COMPLEX FEATURES:

- Jack Nicklaus Golf Center
- College Football Hall of Fame
- Kings Island Theme Park  
Home of the world's longest roller coaster  
Kings Island Safari  
Live shows  
Other unforgettable attractions

### FUN FOR THE WHOLE FAMILY

- Large swimming pool  
(with wading pool)
- Tandem, surrey and  
bike rental
- Mini-golf course
- Playground
- Planned entertainment
- Shuffle board
- Ping pong
- Volleyball
- Horseshoes

For further information or  
reservations call:  
(513) 398-2901 or (513) 241-2130

or write:  
Kings Island Campground  
Kings Island, Ohio 45034

Location: At Kings Island  
I-71, 20 miles northeast of Cincinnati. Take exit 25 northbound;  
Exit 25-A southbound.

 owned/operated by  
**BECK GROUP**  
Special Places For Special People



## MEET YOUR OFFICERS

President - Glenn Lee Whitecotten



I was born 28 Aug. 1938, Terre Haute, Indiana, the second son of John Paul Whitecotten and Elizabeth Evelyn Sankey Whitecotten. Early years were spent in Muncie, IN and Richmond, IN where my father was employed as a pharmacist for the Hook Drug Company. We moved in the mid-1940's to Greenville, Ohio. I graduated from Greenville High School in 1955. In 1959 I graduated from the Purdue University School of Pharmacy.

I received my M.S. from Purdue in 1961 in Life Sciences and entered the University of Wisconsin Medical School in Madison in 1962. I received the M.D. degree in 1966 and began an internship at the Cleveland Clinic in July of 1966. I completed a urology residency at the Cleveland Clinic in 1971, and entered the U.S. Navy under the Berry Plan in July of that year.

Following the completion of my military obligation, I entered the private practice of urology in Savannah, GA in 1973. I decided to change medical specialties and re-entered the Navy and began an anesthesiology residency at the Bethesda Naval Hospital in January 1979. I am professionally content in anesthesiology and look forward to re-entering private practice in Los Alamos, NM this summer. I have enjoyed my Navy career and I look forward to continuing my military association in a reserve unit.

In 1967, I married Grace Oralee Young, also a physician who was interning at the Cleveland Clinic (M.D., University of Michigan). Grace and I have two sons, Timothy John, aged 13, and Matthew Edward, aged 10. Grace also will be establishing a private practice (psychiatry) in Los Alamos, NM. We both are very much looking forward to this next move.

## LINEAGE

1. George Soule m. Mary Becket
2. John Soule m. Rebecca Simmons
3. Moses Soule m. Mercy Southworth
4. Isaac Soule m. Agatha Perry
5. Moses Soule m. Eleanor Williams
6. Hildad William Soule m. Jemima Butler
7. Charles William Soule m. Almira Baker
8. Origen Brigham Soules m. (2nd) Frances Ann Watkins-Draper
9. Julia Esther Soules m. George Franklin Sankey
10. Charles Origen Sankey m. Nettie V. Owsley
11. Elizabeth (Betty) Sankey m. John P. Whitecotten
12. Glenn Lee Whitecotten m. Grace Oralee Young



## Treasurer - Betty-Jean Haner



Betty-Jean was born in Oneonta, New York and educated in the public schools there. She received a B.S. degree in Education at the State University of New York at Oneonta and an M.S. in Library Science at State University of New York at Albany. She has studied in the fields of Administration and Supervision, Conservation, Geology, and Library Science at State University of New York at Geneseo, Plattsburgh, and Oneonta and at the University of Maine and Sacramento State College, College of Notre Dame and St. Mary's College in California.

For many years she has been active in Girl Scouting, having served as a Mariner Scout Leader for 8 years. She has been a member of the Camping Committee of the Mohawk Pathways Girl Scout Council, and served as Unit Leader, Business Manager and Director of one of the Council's Established Camps. She was also Waterfront Director for the Council's Family Camp for several seasons.

Betty-Jean has served as treasurer of the over 500 member South Colonie Teachers' Association for 13 years. For four years she was a member of the House of Delegates of the New York State Teachers' Association, and since 1974 has had an Honorary PTA-Life Membership. She is treasurer of the Albany Colony Society of Mayflower Descendants and a member of its Education Committee. She is also a member of Haner Family Association and Colonie Historical Society.

An active member of Lisha's Kill Reformed Church, she sings in the Choir, was Division Chairman of the Elementary Division of the Sunday School and served as an advisor on the Coffee House Committee. She is a member of the Consistory having served as a Deacon and presently as an Elder and Chairman of the Program Committee. She is also treasurer of the Women's Guild and the Sunday School.

Betty-Jean has served as a Library Media Specialist in the Colonie schools since 1956. During this period, she has set up 2 new Instructional Media Centers in elementary schools of the district. Her current position is Library Media Specialist in Saddlewood Elementary School.

Other interests include: travel (favorite places are British Isles, Holland, Nova Scotia, New Brunswick, California, Florida, and Maine); swimming and boating; music - orchestra, singing & bagpipe; reading. She has served Soule Kindred well as Treasurer for 12 years.

## LINEAGE

1. George Soule m. Mary Becket
2. Susanna Soule m. Francis West
3. Susanna West m. Moses Barber
4. Benjamin Barber m. Mary Tefft
5. Ruth Barber m. Robert Kenyon
6. Ketura Kenyon m. Francis Roberson
7. Ira Roberson m. Theresa Barber
8. Henry Freeman Roberson m. Lydia Dana
9. Albert H. Roberson m. Mary Emmaline Pinkerton
10. Avis Hilton Roberson m. Robert Paul Haner
11. Elizabeth-Jean Haner

## Board Member - Class of 1983 - Linda Soule Preston

My introduction to Soule Kindred came about through my father's efforts as Historian and Co-founder. Although I cannot claim to be a genealogist, I do have a genuine love of history passed down from both parents. This was re-enforced by the travels that came with my Dad's military career as well as seeing the world through the eyes of my European born mother. Perhaps that is why today, as a Montessori Elementary teacher, I most enjoy teaching history and the cultural subjects to children of a younger age than are taught traditionally.

Before going into education, I had an earlier career designing "apres-ski" fashions in Aspen, Colorado under the design label of LISO. After the birth of my son, John Soule Preston, my interest in Montessori education took us to Italy where I completed the Advanced Montessori Training. From there we moved to Cincinnati where I have been teaching ever since, as well as enjoying the many cultural activities this town has to offer, and restoring the older home where we live.

It was a special treat to visit Plimoth Plantation and attend our first Soule Reunion in September 1975. Next came the 1976 Reunion in Philadelphia that was highlighted with the Bicentennial festivities and also brought my brother, Peter Fayette Soule, home from France. The 1979 Pensacola Reunion brought together close family relatives as well as distant Kindred to enjoy the special charm of that historic town. It was during the last reunion in Plymouth in the fall of '81 that I offered to host the '82 Reunion here in Cincinnati.



Linda Preston with her father, Colonel John E. Soule, and her son, John Soule Preston. The picture was taken in 1975 in the George Soule house at Plimoth Plantation.

## LINEAGE

1. George Soule
2. George Soule
3. Nathan Soule
4. George Soule
5. Nathan Soule
6. Latten Soule
7. Ambrose Latten Soule
8. Charles E. Soule
9. Fayette F. Soule
10. Colonel John Soule
11. Linda Soule Preston



ENID MORNING NEWS, Enid, Oklahoma

Sunday, September 6, 1981

(Mrs. Sowle is the wife of the late Charles L. Sowle, 8th generation of George Soule, thru Nathaniel Soule)



Mrs. Sowle

## K. Sowle To Mark 100th Year

Mrs. Katie Sowle will celebrate her 100th birthday Tuesday. Her family will host a reception in her honor from 6 to 8 p.m. at Pekrul Manor, 313 E. Oxford.

Mrs. Sowle made the Cherokee Strip run with her parents and seven brothers and sisters. They staked a claim and she has lived northwest of Enid for 80 years.

Her four sons and their spouses are Mr. and Mrs. Burton Sowle, Rochester, N.Y., Mr. and Mrs. Hoyt Sowle, Mr. and Mrs. Charles M. Sowle and Mr. and Mrs. Larry Sowle, all of Enid. She has eight grandchildren and 17 great-grandchildren.

Friends and relatives are invited to help Mrs. Sowle celebrate her birthday. The family requests no gifts, please.

Sent by  
Daniel D. Sowle  
2816 Camino Principe  
Santa Fe, NM 87501

### HEART SURGERY

Col. Robert F. Soule, USAF, Ret'd, Spring Lake, Michigan, underwent open heart surgery at Bethesda Naval Hospital 21 Oct 1981.

\*\*\*\*\*

Mrs. H.L. (Ruth) Gillig El Segundo, CA, had a valve replaced in her heart in late 1981.

SPRINGFIELD PRESS, Springfield, PA  
Thursday, November 5, 1981

## Autumn Festival Bazaar



Jean Soule poses as the "Pocket Lady" with a small friend from the Room to Grow Day Care Center at the Church of the Redeemer. "Pocket Ladies" will be a children's feature at the church's annual Bazaar, November 20-21.

Jean Condor Soule's poetry has appeared in several previous issues of Soule Kindred. She is married to George H. Soule, now retired from DuPont, and working for the Episcopal Church.

— Sent by George Standish Soule

Two of our oldest grandsons, James and Peter Woods of Chatham, Mass. are second and first year students at the Citadel in Charleston, South Carolina. James was inducted into the Boy Scout Court of Honor as an Eagle Scout on June 15, 1980 and Peter on March 18, 1981.

Sent by Mrs. John (Phyllis S.) Murdock, Yarmouth Port, MA

From a May 1980 Convention Report of the Ohio Genealogy Society:

The highest honor that OGS confers on members is the Fellow Award. This Award has been in existence since 1964, but the 1980 Convention is the first time that a Certificate has been presented. The 1980 recipients included: Lt. Col. Roger E. Turner, Gwendolyn Singrey Turner, Sue Dunlap Lee, Cora Harshman Bartholow, Clifford T. Wig, and Florence Main. (Lt. Col. and Mrs. Roger E. Turner of Perrysville, Ohio, are Life Members of Soule Kindred.)

# Summit Sportsman

by Ron Teke



Ron and Tania Teke live in Silverthorne, CO where Ron is a sports columnist in Summit County.

## Wife Appreciation Day

I would hope that all sportspeople would have a spouse as generous as that of mine. Although she sometimes laments and pleads that I not go on some outing, I know that deep inside she understands that the outdoors is my big hobby. I don't spend days and evenings in bars, I don't chase wild women, and I'm not into drugs unless you count the first aid medicine I carry in the woods for an unexpected case of giardia. Many times my spouse will share trips afield, but I must admit its been rough for the last few years with two children under three years of age. Yet this city-bred New Jersey girl has been accommodating. Without the aid of a motor home or even an enclosed camper she has followed me from East to West in search of great hunting and fishing. And even with two little children we all have been fishing, elk and deer hunting. Now if you have never had a two-year-old with you on an elk stand, you don't know what real hunting is all about.

One experience that I offer comes quickly to mind about how important it is to have a wife along on an outing. Many years ago while hunting antelope in Wyoming I was fortunate enough to bag a fair buck. Without really much coaxing my wife helped with the field dressing and dragged the animal back to the truck. Not bad uh? I'm sure she remembers the days of fishing near Walden when the wind blew so hard she had to stay in the tent so it wouldn't fly away while I fished. What a sacrifice. There were the bears and racoons outside of our tent in New York that she tolerated and the bats flying in the cabin at Sand Lake Lodge. I'm sure she remembers the time it snowed on her birthday, June 10, while we camped on the Grand Mesa. Even though it took the tire chains to get us out, she loved the birthday cake I baked her that night in the tent on the Coleman stove.

I'm sure that when she married me she expected a comfortable life in the suburbs. But after nine moves in seven years she knew she had a restless soul. We haven't moved since 1978 and it feels good to have some roots.

So it is with great appreciation that I offer this day as a National Wife Appreciation Day. I hope that everyone out there has someone just as understanding and loving. Thank-you Tania!

Tania's lineage:

1. George
2. Nathaniel
3. Nathaniel
4. Wesson
5. James
6. Wesson
7. Miram A.
8. Harvey M.
9. Claude R.
10. Nancy E. Sowle Potekhen
11. Tania Potekhen



The rest of the Teke family, Jennifer, wife Tania and Christopher.



## MEET CINCINNATI

The Taft Museum is an 1820 house last owned by Charles Phelps Taft, brother of the 27th President. It has been exquisitely restored with furniture, draperies, and wall treatments of the period. The private art collection includes rare Chinese porcelains as well as Rembrandt, Hals and Goya paintings.

In January, your editor received a note from Shirley Smith from Sunrise, Florida: "I don't know what to do with that fragile, ancient clipping....It was sent to me by some Vermont friends who were clearing out a father's possessions. It seems to have come from the "New York World" sometime in 1920, but the friends don't know any more about it." This clipping is reproduced on the left below. After receiving the clipping, I consulted the NY Times Index for 1920, and found the article from the New York Times. Recognizing the name "Claron" as one of my Vermont kin, I consulted my files for more information. Mrs. Kenneth (Carolyn Griffith) Tarbell of Lantana, Florida wrote me in 1980, "Uncle Lige's son, Claron George, married twice. His first wife died with birth of their only child, Emma, buried in Danby cemetery. Emma the wife was buried in New York in her family lot. Years later he married Mardia ~~A~~. They lived in Albany." Mrs. Tarbell also informed me that the name "Claron" is a corruption of "Mac Lauren". (Claron's grandfather, John James Soule, married Mary Ann Mac Lauren.) Claron died in Albany in the 1940's and is buried in Memorial Gardens, Colonie, NY.

Lineage of Claron George Soule: George-1, Nathaniel-2, Nathaniel-3, Wesson-4, James-5, James-6, John James-7, Elijah D.-8, Claron George-9

Circulation Books Open t

920. Entered as Second-Class M Post Office, New York, N

HEIRESS GOES BACK TO CLASSES AFTER SHE WEDS STUDENT

Miss Knapp Met Young Soule While He Was Driving Her Aunt's Car.

MARRIED AFTER SCHOOL

"College Chauffeur" Quit His Job Following Engagement to Lawyer's Daughter.

Mr. and Mrs. Claron George Soule, after less than a day of married life, went back to school this morning.

Nothing could have been more romantic than the way they got married after school hours yesterday afternoon, and nothing more practical than the daily programme they established for themselves immediately after the ceremony.

The bride was Miss Emma Whitman Knapp, who inherited a fortune from her father Wallace C. Knapp, a New York lawyer, and her great-uncle, Nathaniel Whitman, a silk merchant.

It is hardly fair to describe the bridegroom as "a former chauffeur," although the truth is that he was employed in that capacity by Miss Knapp's aunt, Mrs. Edward S. Isham, No. 26 West 37th Street.

he is a son of Elijah Soule of Manchester, Vt., and the Soule family is one of the oldest in New England. He took a job running an automobile merely to help pay his college expenses.

One day about two years ago Miss Knapp took a ride in her aunt's automobile and Soule was driving it. And the next thing was Miss Knapp's announcement that she was going to marry him. He gave his "notice" to Mrs. Isham and his brief career at the steering wheel under orders was over.

He is twenty-two and so is she. He is studying medicine at Columbia University and she is studying the things that are likely to prove useful and appropriate for a doctor's wife to know. How much longer they are to continue their studies has not been announced, but there will be no honeymoon before the end of the college year, anyway.

Mrs. Soule has had—and still has—an apartment at No. 452 Riverside Drive. With her lived Miss Mary Lincoln Beckwith, a descendant of Abraham Lincoln. The two girls were ophaperoned in their apartment by Miss Morrow. And now Mr. Soule is to live there.

There was talk of opposition to the marriage on the part of Miss Knapp's family, but Miss Morrow told an Evening World reporter this morning there was nothing to that.

It is true that members of her family were not present at the ceremony, but that may have been because it was such a "busy hour" event. It came at 4 o'clock yesterday afternoon, when neither Miss Knapp nor Mr. Soule had any classes to attend.

They went to the Ambrose Chapel of the Cathedral of St. John the Divine, and Dean Howard C. Robbins officiated. The bride was given away by Miss Morrow and the only other witness was Miss Beckwith.

"And may I see Mr. and Mrs. Soule?" a reporter asked Miss Morrow.

"They're both at the university," she said. "They had early classes today."

THE NEW YORK TIMES, WEDNESDAY, MARCH 31, 1920

HEIRESS IS WEDDED DESPITE RELATIVES

Miss Knapp Bride of George Soule, Her Aunt's Former Chauffeur.

HUSBAND NOW A STUDENT

Ceremony Takes Place in Chapel of Cathedral of St. John the Divine.

Miss Emma Whitman Knapp, who inherited a fortune from her father, Wallace T. Knapp, a New York lawyer, and her great-uncle, Nathaniel Whitman, a silk merchant, was married at 4 o'clock yesterday afternoon by Dean Howard C. Robbins in the Ambrose Chapel of the Cathedral of St. John the Divine to Claron George Soule. Mr. Soule was said last night to have been employed by Miss Knapp's aunt, Mrs. Edward S. Isham, of 26 West Thirty-seventh Street, as a chauffeur.

The marriage was opposed by the bride's relatives, and none of them attended the ceremony. Miss Knapp was given away by Miss Edith Morrow of 452 Riverside Drive. Miss Mary Lincoln Beckwith, a descendant of Abraham Lincoln, was the only other witness.

Mr. and Mrs. Soule are each 22 years old. Mrs. Soule attended the Bristol and Westover Schools and has been taking special work at Columbia. She has been living with Miss Beckwith, 452 Riverside Drive, where Miss Morrow has been chaperoning them.

Mr. Soule is a son of Elijah Soule of Manchester, Vt., and comes of an old Vermont family. He has been studying in the city for about three years, and took the place of a chauffeur for Mrs. Isham to help pay his way through the course. He became acquainted with Miss Knapp while driving her about her aunt's automobile, and their acquaintance ripened into a romantic attachment. Together they drove into the country to play golf, and in the city they were frequently in each other's company while Mr. Soule was acting as chauffeur.

Because of the opposition of Miss Soule's relatives there was no announcement of the engagement. Neither Mr. Isham nor Charles Miller, an uncle who is a lawyer at 120 Broadway, attended the ceremony. Another uncle, James Miller, was killed in the war serving as an aviator.

Mr. and Mrs. Soule will live at 452 Riverside Drive. Mr. Soule will continue his scientific course and intends to complete a medical course. Nathaniel Whitman, from whom Mr. Soule inherited a fortune, was a member of the firm of Leisher & Whitman, silk merchants, at 991 Broadway. The bride's mother was Miss Caroline Miller of New York.



We found the gravestone in Danby Cemetery on a trip to Vermont in 1977.

Question: SOULE/SOLES: Need proof of ancestry of Isiah Soles/Soule, b. ca 1805 Brunswick Co., NC, m before 1832, Tabitha \_\_\_\_\_, b. ca 1808 Columbus Co., NC. Both living, 1850 census, Columbus Co. NC.

H.H. Patrick Jr., 95 Cumberland Avenue, Asheville, NC 28801

\*\*\*\*\*

Question: I am trying to verify the birthplace and parents of Lewis Soule, who married Lucretia Hall on January 1, 1854, in Abington, MA, was a Civil War captain in the 29th Massachusetts Volunteer Militia, died March 10, 1900 (age 65) in Whitman, MA, and is buried in Colebrook Cemetery. Marriage and death records say he was born in Charlestown, MA, and his father's name was Jeremiah, but I cannot find a birth record to substantiate either fact. Lewis Soule spent his married life in Abington (Whitman), but I have not found him or his parents anywhere in New England in the 1850 census. I would also like to know if Lewis Soule had any brothers or sisters.

John H. Pickett, 6007 Patrick Place, Charlotte, NC 28210

\*\*\*\*\*

Question: I have a sugar bowl that belonged to Mrs. R.R. Gibbs' grandmother, Lillis Collins. I am trying to find out if Lillis was a Soule. The sugar bowl was 100 years old in 1892. I am great granddaughter of Susanne Soule Bennett and Phoebe Ann Soule Collins.

Mona C. Moeckel, 4249 Dexter Trail, Stockbridge, MI 49285

\*\*\*\*\*

Answer: Vol XVI, No. 1, page 30, January 1982 Newsletter had article about a baby dedication ceremony, with J. A. Soule presiding. "I am Joseph Allen Soule-10, Son of Orlando Soule-9, Son of Joel-8, Son of Benjamin-7, Son of Jonathan-6, Son of Benjamin-5, Son of George-4, Son of William-3, Son of George-2, Son of George Soule of the Mayflower."

J. A. Soule, 2532 Dunn Drive, Orlando, Fla. 32810

\*\*\*\*\*

Question: I would like to know how I can get the information on George 2, George 4, William 3, Benjamin 5, Jonathan 6, Benjamin 7. I'd like anything on Susanna 9--also Phoebe Ann Soule that married Simeon Collins. (Ed.Note: For first 5 generations see Mayflower Families-3; see above answer for what appears to be same lineage.)

Mona C. Moeckel, 4249 Dexter Trail, Stockbridge, MI 49285

\*\*\*\*\*

Question: Hiram Sowle or Sowles was born in Ontario, NY about 1827. He married Sarah Boyer (date unknown) and they moved to Indiana. They had one child in Pennsylvania (b.1849 daughter) who died young, Ellice J. Sowles (b.1853), Herman Wesley Sowles (b.4/26/54), Eunice M. Sowles (b.7/10/1856), Jonathan Frank Sowles (b.12/25/59), Fretta Sowles (b.1862), Hiram Howard Sowles (b.1864). All children were born near Angola, IN in York Township except first child. Hiram served in the Civil War 1863-1865. Does anyone know who his mother and father might have been? He died December 23, 1909, Huron, South Dakota. Hiram also married a second wife, Mary Ann Smith from Chicago, IL in 1875. They had one daughter, Margaret Sowles Howard. Hiram's son, Jonathan Frank Sowles is my great-great grandfather.

Mrs. Janet (Sowles) Carper, 2564 C R 60, Auburn, IN 46706

\*\*\*\*\*

Question: I would be more interested in contributing to the Soule Kindred if I could trace my lineage to George of the Mayflower. As far back as I go is Reuben Soule who was married to Olive Irish Soule and he died at Pawling, Dutchess County, NY around 1829.

Gladys Soule Shannon, 4794 Stage Rd. R. D. 1, Burdett, NY 14818

Question: Need proof that Sally Wilber/Wilbur b. 18 May 1795 Brookfield, NY d 30 Sept. 1875 Hamilton NY m. 16 July 1811 Brookfield, NY to Cyrus Bardeen b.3 Mar.1788 Croydon, NH, d. 15 Oct 1866 Hamilton, NY was the daughter (probably 8th child) of Mary Barber b. 27 May 1762 Hopkinton, RI, d. before 1801 Brookfield, NY m. 30 Dec. 1780 Westerly, RI John Wilber/Wilbur/Wilbour b. 30 Aug. 1760 Westerly, RI, d. 14 Sept 1806? Brookfield NY. John Wilber/Wilbur/ later married 21 Sept. 1801 in Westerly, RI Elizabeth Babcock who later married in Brookfield NY (probably) ? Brown. John and Elizabeth had 3 children.

Mrs. Barbara Bardeen-Cobb, 6817 W. Blue Mound Road, Wauwatosa, WI 53213

Question: Need birth dates and place for Hiram A. Sowle and wife Allice Ettle Arthur, parents of Verne Arthur Sowle, b. Hutchison, Kansas 22 Feb. 1892 m. Gladys Mae Parker b. Vienna IL 30 May 1893. Verne and Gladys were parents of Bill Parker Sowle b. Oct. 1921 or 1922, and Jack Harvick Sowle, b. 26 April 1925, Los Angeles, CA.

Jack Sowle, #7 Williamsburg Circle, Galveston, Texas 77551

La Crosse, Wisconsin

La Crosse Tribune, Thursday, February 4, 1982-9

Policy matures, but 98-year-old can't be found

Joe Sowle, where are you? Remember that insurance policy you took out back in 1907 when you were working for a pickle factory in the La Crosse area? Well, the Equitable Reserve Association, the insurance company that issued the policy, is looking for you. The policy has matured and you — or a descendant — are entitled to the face value of the policy.

Lorene Lauer, a clerk in the member service department of the Neenah-based company, said Sowle used to live in Onalaska. At the time of the application for the policy, he indicated he worked for a pickle factory. He also listed his wife, Dorah N. Sowle, as the beneficiary.

Ms. Lauer cannot release the size of the policy, except to say it is a "fair amount." Still, she said, the company wants to get the money to Sowle, if he is still living, or a family member.

According to the original application, which was written by hand in those days, Sowle was born Nov. 5, 1883, in Baraboo. He had an aunt who died of consumption, now called tuberculosis.

The policy has been paid up since 1924 and has matured since Sowle, if he is alive, would be 98. He would be one of those rare persons who outlives the insurance company's table of mortality, Ms. Lauer said.

She said there generally are "quite a few" persons the company tries to find under similar circumstances.

Any information about Sowle should be directed to Ms. Lauer.

Several persons have sent me the above clipping. I haven't been able to identify Joe Sowle. I did discover that in 1900 he was living in Onalaska, La Crosse County, WI with his grandfather Powers G. Moulton. He was identified as Joseph L. Sowle, age 16, b. 1884. Can anyone find Joe or a descendant?

If you have an answer to a question, please send a copy to the Newsletter editor, as well as writing directly to the questioner. (Ed.)



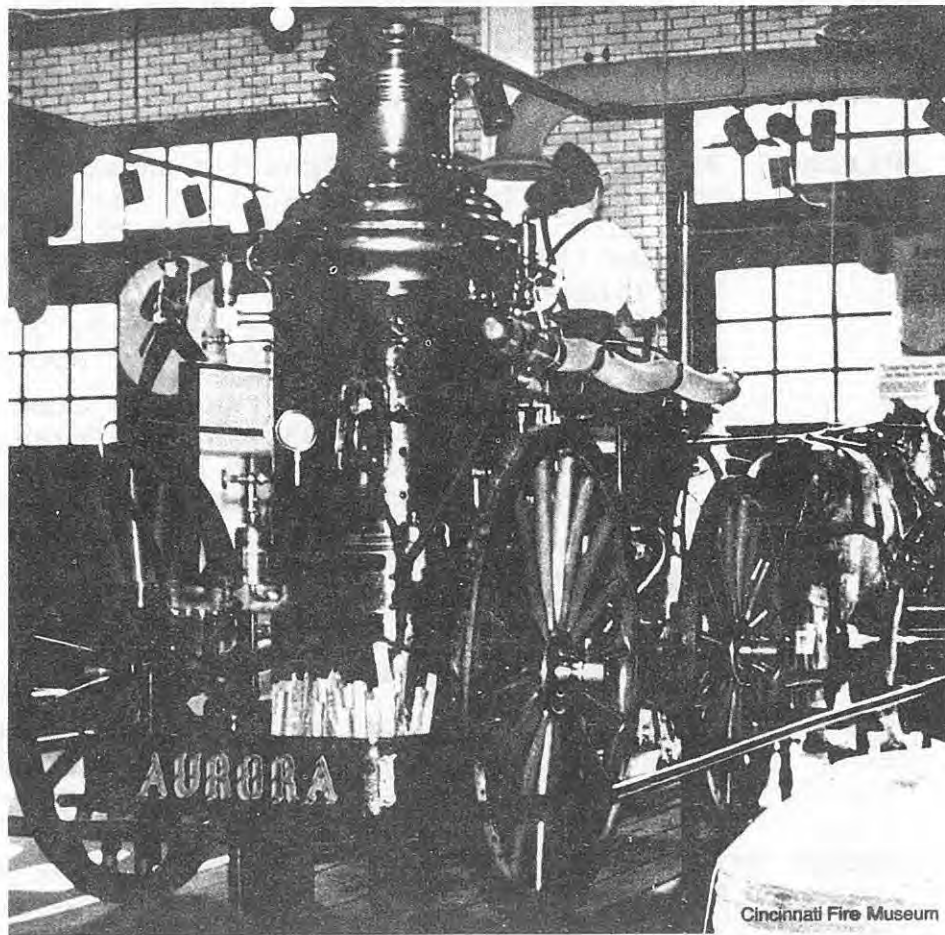
# ATTRACTIONS IN CINCINNATI

**Cincinnati Fire Museum** 337 E. Ninth St., 241-6700. Outstanding exhibit of beautifully restored antique fire apparatus, equipment, photographs and memorabilia. Visiting Hours: 1:00 p.m. - 4:00 p.m. or 6:00 p.m. - 9:00 p.m.

**Americana Amusement Park** 5757 Middletown-Hamilton Rd., Middletown 45042; 513-539-7339. 30 miles north of Cincinnati off I-75. Admission includes rides, live entertainment, and swimming. Open daily Memorial Day to Labor Day, weekends April-September. Hours 10 a.m.-11 p.m. Visa and Mastercard accepted.

**The Betty Blake Riverboat** Foot of Greenup St. and Riverside Dr., Covington, KY; 606-261-8500. Fine dining and entertainment, Cincinnati's only cruising restaurant. Dinner cruises 6:30 p.m. - 9:00 p.m., luncheon cruises 12 noon - 1:30 p.m., afternoon sight-seeing 2:30 - 4:30, moonlight cruises 10:00 p.m.-12:30 p.m. Reservations required. Banquet and party facilities available.

**Cincinnati Art Museum** Eden Park, Cincinnati; 721-5204. Open Tues.-Sat. 10-5; Sun. 1-5. General art museum offering 5,000 year survey of world art, plus temporary exhibitions. Admission fee charged except Saturdays.



Cincinnati Fire Museum

**Cincinnati Historical Society** Eden Park, Cincinnati (next to the Art Museum) 241-4622. Meetings, lectures, recitals, and temporary exhibitions September-June. Research library open to the public throughout the year Tuesday-Saturday, 9 a.m. - 4:30 p.m.

**Cincinnati Museum of Natural History and Planetarium** 1720 Gilbert Ave., 621-3336. Open Tuesday-Saturday 9-4:30 and Sunday 12:30 - 5 p.m. Planetarium programs on Saturday and Sunday at 1, 2 and 3. Museum houses the only simulated cavern exhibit of its size in the world; Pleistocene and Indian displays plus exciting temporary exhibitions.

**The Cincinnati Union Terminal** Shopping mall; restaurants, shops, entertainment. 1301 Western Ave., Cincinnati 45203; 241-7257. See our ad pg. 4.

**Cincinnati Zoo** 3400 Vine St., Cincinnati. One of the nation's finest zoological parks. Home of the nation's first Insect World exhibit. New outdoor gorilla display and Big Cat Canyon—home of the rare white Bengal tigers. Open everyday of the year. Group rates available. Call 281-4703 for information. See our ad this pg.

**The College Football Hall of Fame** Kings Island, Exit 25 off Interstate 71; 241-5410. Open daily 9 a.m. - 6:00 p.m. Memorial Day - Labor Day; open remainder of year 10 a.m. - 5 p.m.; closed Christmas Day. Admission: \$3, children 5 and under, free. Hours of football fact and fun for the whole family in this new and exciting sports museum.

**Contemporary Arts Center** 115 East Fifth St., 721-0390. Presents changing exhibitions, performances, and media events. Hours: Tues.-Sat., 10-5; Sun., noon-5 p.m.; Closed Mon. and holidays. Admission charge.

**Hebrew Union College Gallery of Art and Artifacts** 3101 Clifton Ave., 221-1875. "A Walk Through the Past," highlights biblical sources of contemporary Jewish celebrations and holidays through displays of ancient artifacts and modern objects. Mon.-Fri. 11:00 a.m. - 4:00 p.m., Sun. 2:00 - 4:00 p.m., public tour Sun. 2:30 p.m. Free admission and parking.

**Kings Island** P.O. Box 400, Kings Island, OH 45034; 241-5600. Open 7 days a week, Memorial Day to Labor Day. The best family entertainment in the midwest.

**Krohn Conservatory** Eden Park, 352-4086. Cincinnati's adventure into the world of flowers. Five houses under glass, open daily, free to the public. Special night hours, Easter and Christmas. Guided tours available, 352-4091. Gift shop 10-5 daily, 352-4090.

**Latonia Racetrack** 440 Price Pike, Florence, KY 41042; 606-371-0200.

**Sharon Woods Village** Rt. 42, Sharon Woods County Park; 563-9484, 721-4506. Open May through October. Outdoor museum consisting of restored 19th century buildings brought from various parts of southwestern Ohio, including medical office, Greek Revival farmhouse, train station, barn complex, Gothic Revival home, and Federal home. Closed Mon. and Fri. Admission

# MILESTONES

**Births:** 23 Feb 1979 - James Schuyler Houck, and 28 August 1981 - Rob Roy Houck, Jr. both in Annapolis, Maryland. Parents: Rob Roy Houck and Leigh Schuyler Houck. The children are the great-great-great grandchildren of Leander-7 and Caroline Lucinda Graham Soule. The lineage is George-1, John-2, John-3, James-4, John-5, James-6, Leander-7; Florence Soule Smith-8, Sybil Smith Cook-9, Constance Cook Schuyler-10, Leigh Schuyler Houck-11.

Birth: Shaun Michael Kasley, June 25, 1980 to Linda & George Kasley, P.O. Box 8934, Waco, Texas, 7610. Linda is the daughter of Herbert and Mary Soule of San Antonio.

Submitted by Mildred Soule, 14 W. 29th St., New York City, NY

**Birth:** Andrea Jayne Soule, 6 February 1980 at Southbridge (Worcester Co.), Mass. Daughter of Richard Mansfield Soule and Josephine Swift Soule of Brookfield, Mass.

Contributed by Dr. and Mrs. Francis G. Soule, Jr., 27 Windswept Drive, Sandwich, Mass. 02563

Jessica Kay Ide born Mar. 21, 1981, daughter of William F. and Karen Ide. Jessica Kay is my great granddaughter. Sent in by Gertrude Soule Lewis, Box 49, Kemmerer, WY 83101

**Arthur Bradley Soule IV** born in Sheperdstown, West Virginia August 10, 1980. From A. Bradley Soule, Jr., M.D., 21 East Terrace, South Burlington, VT 05401

Born on Nov. 14, 1981 to Daniel & Laura (Faulk) Sharp, a son Daniel Andrew Sharp. Great, great grandson of Clara E. Hansen. Submitted by Mrs. Clara E. Hansen, 1141 - 19th St., San Pedro, California 90731

**William George Soule and Kathy Keleher Soule** are pleased to announce the birth of their first child, a daughter-- Jennifer Anne-- at the Guelph General Hospital, Guelph, Ontario on January 15th, 1982. The grandparents are George F. and Grace Soule and James and Velma Keleher. Proud great-grandparents are Clyde M. and Annie Soule and John and Mildred Leggitt. Jennifer is a 13th generation descendant of Pilgrim George Soule.

Sent in by Clyde M. Soule, Guelph, Ontario, Canada

Robert F. Soule, Jr. had a daughter, Bethany Marie, born 19 Oct 1981. Sent in by grandfather Col. Robert F. Soule, 17624 Oakwood Drive, Spring Lake Michigan 49456

**My granddaughter Cathy Janean Ide** was married to Clifford Bartholomew Nov. 17, 1980 in Colorado Springs, Colorado. Sent by Gertrude Soule Lewis, Box 49, Kemmerer, WY 83101

Mary Elizabeth Soule (Curtiss) Mahler of Bloomington, MN re-married in 1981. Contributed by Virginia Soule Abernethy, R.R.1, 430A-Apt. 9, Norwich, VT 05055

**Married:** Arthur M. Drinkwater to M. Shirley ? on Oct. 1, 1981. Sent by Arthur M. Drinkwater, 24 Melha Avenue, Springfield MA 01104

C14 THE SPOKESMAN-REVIEW Wed., July 15, 1981

# weddings



MRS. SOULE

## Soule-Holmes

The marriage of Miss Linda R. Holmes to Charles B. Soule was solemnized in a recent ceremony at Emmanuel Lutheran Church, Cheney, Wash.

The bride is the daughter of Mrs. Ellen Holmes, Cheney. Soule is the son of Mr. and Mrs. Ed Soule, Wenatchee, Wash.

A reception was in the Cheney City Hall. The couple is living in Spokane after a honeymoon in Hawaii.



Barbara Wisegarver married to Robert Douglas Blanchard, Sr., Jan. 16, 1982 at Ramona Lutheran Church, Ramona, CA. Robert's line: George-1, Nathaniel-2, Nathaniel-3, Wesson-4, James-5, Wesson-6, Hiram A.-7, Harvey M.-8, Claude R.-9, Jeanette Soule Blanchard-10, Robert-11.

\*\*\*\*\*

**Death:** Harold Eugene Ragle, age 87, 27 February 1981 at Palo Alto, Santa Clara Co., California. Father of Elizabeth Ragle Soule (Mrs. Francis B. Soule, Jr.) of Sandwich, Mass. Grandfather of John G. Soule of Austin, Texas, Richard M. Soule of Brookfield, Mass, Robert R. Soule of Alexandria, VA. Great-grandfather of Laurie E. Soule and J. Edward Soule of Austin, Texas and Andrea J. Soule of Brookfield, Mass. His wife, another daughter and 3 other grandchildren also survive him. Sent in by Dr. & Mrs. Francis G. Soule, Jr., 27 Windswept Drive, R.R.3, Sandwich, Mass. 02563

Mrs. Mildred Soule Coplen, 628 Leisure World, Mesa, AZ 85206 writes: My husband, Spencer A. Coplen, died October 5, 1981 in Tacoma, WA.

**Deceased:** 5 May 1980, Dorothy M. Soule, wife of Howard Soule, 4th From Howard Soule, 4th, 606 N. Morton Lane, Las Cruces, New Mexico 88005

From Mrs. C. Louis Gutzeit, 68 Lime Ave., #10, Long Beach, CA 90802: I think I advised you of my beloved husband's death on March 3, 1980. Carlos Louis Gutzeit, Ph.D. b. May 31, 1906, d. March 3, 1980.



Page 2—Sun-News—Las Cruces, New Mexico—Tuesday, May 6, 1980

# Death Notices

## Soule

Dorothy Morton Soule, 57, of Fairacres, died Monday night at an El Paso hospital. She had been a longtime resident of Las Cruces and was active in the Veterans of Foreign Wars Auxillary.

Funeral services will be 4 p.m. Wednesday at Graham's Chapel with burial to follow in Masonic Cemetery. The Rev. Norman Jones of the First Assembly of God Church will officiate assisted by Mrs. Soule's neph-

ew, Royce Morton.

She is survived by her husband, Howard P. Soule; her father, Raymond Morton; two brothers, Harrell Morton and Carroll Morton, all of Las Cruces; three nephews and two nieces. She was preceded in death by her mother, Myrtle Morton and a brother, Raymond B. Morton.

Pallbearers are Jack Garrett, Bruce Morton, Craig Morton, Don Beebe, Leon Beebe and Frank Drews.

**SOULES, Dr. Charl W.** — Suddenly on Monday, October 5, 1981, at North York General Hospital, Dr. Charl W. Soules, beloved husband of the late Edna K. Francke, brother-in-law of Mr. and Mrs. R. C. Bastable. A private family service will be held at the "Humphrey Funeral Home - A. W. Miles Chapel", 1403 Bayview Ave. (at Davisville Ave.) on Wednesday afternoon 2:30 o'clock. Interment Mount Pleasant Cemetery. *To R.M.T.*

Sent in by Martha Soule Bird of Dayton, Ohio. (More about the Soules of Dayton in July.)

**FINN, Mary (Soule)** age 83, of 980 Wenbrook Dr., Kettering, passed away Friday at Kettering Memorial Hospital. She was preceded in death by her late husband Edward. She is survived by a son and daughter-in-law Thomas and Mary Finn of Beavercreek; sister-in-law Mary Swope of Dayton; 2 grandchildren, Michael Thomas Finn and Pamela Jane Gordon; 3 great-grandchildren; 9 nieces and 9 nephews. She was a member of Otterbein United Methodist Church, Charity Grange and Kettering Senior Citizens. Funeral services 11 a.m. Tuesday, Tobias Funeral Home 648 Watervliet Ave. Pastors Joseph R. Graham and Harvey C. Hahn officiating. Interment Willow View Cemetery. Friends may call 3 to 5 and 7 to 9 Monday at the funeral home. Family suggest gifts be made to the Otterbein United Methodist Church or one's favorite charity

# PRECINCT TWO



Precinct 2 (11 candidates for eight seats). From left, seated: Elizabeth H. Clarke, Alan B. Wilson, Patricia A. Swanson; standing: John T. Cunha, William S. **WILLIAM SOULE WIDNALL**

Widnall, Eric T. Clarke, Michael S. O'Sullivan. Not pictured: Karen A. Dooks, Donald D. Wilson, John R. Holt, and Anne L. Whelan.

LEXINGTON MASS

Clipping sent by Marjorie Soule Widnall, mother of Dr. William Soule Widnall. (Mrs. William B. Widnall, 374 E. Ridgewood Ave. Ridgewood, NJ 07450)

She writes that he was elected to the town council.

# Veritas

For the Faculty, Staff and Friends of the University of Miami

Vol. 22, No. 9 February 1, 1982

## UM selects Sowle

## as next law dean

Claude R. Sowle, former president of Ohio University and a distinguished scholar and professor of law at Ohio State University, has been named to the deanship of the University of Miami's School of Law.

Announcement of the appointment was made Wednesday, Jan. 27 by President Edward T. Foote II who said, "Claude Sowle is one of the most respected and experienced legal educators in the country.

Not only is he an accomplished scholar and fine teacher, he has served for years as dean of a law school and president of a university. Rarely have I heard such praise about an individual. He will be an outstanding dean.



Dr. Claude R. Sowle

"Following Dean Mentschikoff's leadership is not an easy assignment. I have every confidence that Professor Sowle will be equal to the task. He will be an outstanding dean, and University of Miami is fortunate indeed that he is willing to join our institution. Professor Sowle would be a fine addition to any law faculty. We are doubly fortunate that both Sowles are coming."

Sowle's wife, Kathryn Sharp Dix, graduated first in her class from Northwestern School of Law and will also join the UM law faculty. She's now a tenured professor of law at Ohio State and has served as a member of the Ohio Constitutional Revision Commission from 1971 to 1977 when the job was completed.

The dean-elect, 53, will succeed Soia Mentschikoff who is retiring from that post. During her eight years as dean, Dr. Mentschikoff developed the UM School of Law into one recognized nationally as "excellent." An expert in commercial law, Dean Mentschikoff came to the UM from the University of Chicago. She became

dean and distinguished professor of law on June 1, 1974. She had been named to the position in October 1973 and had served as consultant from Jan. 1.

An expert of criminal law and torts, Sowle earned both his Bachelor of Science (1950) and Juris Doctor (1956) from Northwestern University. Admitted to the Illinois Bar, he worked for a Chicago law firm for two years before he began his teaching career at Northwestern in 1958. While there, Dr. Sowle was associate director of the criminal law program, 1958-62, assistant dean and then associate dean.

He left Northwestern in 1965 to accept the position as Dean of the College of Law at the University of Cincinnati where he briefly held a dual appointment as acting vice president for academic affairs.

In 1969 he was named President of Ohio University in Athens, Ohio, and held that post until he resigned in 1974 to join the law faculty at Ohio State.

While at Northwestern, Dr. Sowle served as chairman of the drafting subcommittee of the Mayor's Committee on Organized Crime Legislation; was a legal consultant to the Governor of Illinois, a member of the Board of Directors of the Chicago Crime Commission, and was named one of Chicago's 10 Outstanding Young Men.

He later served as chairman of the Ohio Legislative Service Commission Technical Committee to Redraft Ohio Criminal Code.

His publications include *Cases and Comments on Criminal Justice* (with E.E. Inbau and J.R. Thompson), *A Concise Explanation of the Illinois Criminal Code of 1961*, and *Times of Trouble, Times of Hope* (1968), as well as articles in various legal and other publications.

As a student, Sowle served as business manager of the *Daily Northwestern* newspaper, was elected to Deu, senior men's honorary, and to the Order of Coif. He received an honorary Doctor of Humane Letters from Loyola University in 1970.

The Sowles are the parents of two children, Leslie Ann, a graduate student at the University of Chicago, and Stephen Dix, a senior at Williams College, Williamstown, Mass.

Claude's lineage: George-1, Nathaniel-2, Nathaniel-3, Wesson-4, James-5, Wesson-6, Hiram Allen-7, Harvey Mc Kentyre-8, Claude Raymond-9, Claude Raymond-10, Claude Raymond-11



small busy photo

# History lives through family stories

by Mary Eshbaugh Hayes  
Margery Robertson Hallum has been tracing her family roots back to the early days of America.

Meeting her the other day, she excitedly told me how she has documented that she is descended from several people who came over on the Mayflower.

"There's a thrill in knowing your families helped start the country," she said, "but more important than that, I enjoyed learning the stories of people and how they survived."

"Can you imagine pulling up on the shores of the Atlantic after being on a horrible ship, with winter coming, having babies, no food or medicines and being faced with the insurmountable task of starting homes and a new life? It truly was survival of the fittest."

Catching Marge's excitement, I suggested that she be the subject of an article on genealogy, that would explain how she went about her search...so other people could learn where to start and where to look for information in the search for ancestors.

### Need a Push

"I don't really believe most people are interested in their lineage," she said, "It takes something to push you forward into wanting to do it."

Marge started because she wanted to prove work already begun by her mother.

"My mother was 86, had a detached retina and was blind. I wanted to please her during her last days," said Marge. "She had been a schoolteacher, always interested in history. For 50 years she had compiled names and dates. She had 500 pages of stories of people in the family...but no documents to prove anything."

And Marge felt she had to prove the stories.

"I want no part of just stories...I want the truth," she said.

### Start with Stories

However, she started with the family stories. Stories that said there were family names that went back to the Mayflower. So Marge wrote to several lineage organizations, including the Mayflower Society, Colonial Dames of the 17th Century, Daughters of American Colonists, Daughters of the American Revolution.

"They give you the names of the early colonists," she said, "they have all the records. Then you have to prove ancestry up to their records. You have to prove every wife, husband and child with a birth certificate and death certificate."

### Not for Tea Parties

"The reason to join these lineage organizations," said Marge, "is not for the tea parties...but for the historic handling of your genealogy. If you are accepted (by your proof of family leading up to their records), then you know for sure which of the early colonists are actually of your ancestry."

Marge found that she is a descendant of Myles Standish, the military leader in Plymouth Colony.

The way the record reads is: Standish had 12 children. One son, Alexander Standish, married Sarah Alden (daughter of John Alden) and they had Sarah Standish. Sarah married Benjamin Soule and their child was Zachariah Soule. Zachariah married Mary Eston and they had a daughter, Lois Soule. Lois married Jabez Vaughan and they had Daniel, Vaughan. Daniel married Martha Raymond and they had Erastus Otis Vaughan. Erastus married Olive Hoyt and they had

Martha Vaughan. Martha married another Vaughan, Benjamin Vaughan. ("This threw me for a while," said Marge. "I thought my mother had made a mistake.")

Martha and Benjamin had a daughter, Sarah Vaughan, who married Middleton Robertson. Sarah and Middleton had a son, Raymond Robertson, who was Marge's father.

### Work Backwards

"You start from where you are and work backwards," explained Marge. "You get birth, marriage and death records as far back as you can."

"This is often very hard. Most of my family had lived in Vermont and Massachusetts but finally I ran into a dead end in Vermont. I had written to the county clerks but they couldn't find records of my family."

"So I went back to my mother. What did she remember besides Vermont? Well, she remembered that family members had moved to Wisconsin. I wrote Murl Leitz, a registered genealogist in Wisconsin and she sent a census that listed Erastus and Olive Vaughan, but didn't mention little Sarah."

"We did another search for Sarah and found her in another census."

"Then I found Erastus' birth certificate in Vermont, stating that he was the offspring of Daniel and Martha Raymond Vaughan."

### Link to History

"This was my link to history...from there on it's all in the history books of the lineage organizations. Daniel is documented in the books, Jabez is really documented."

Once Marge proved the historical link...the Mayflower Society presented her with a plaque. She had proved that she was not only

descended from Myles Standish but also from Pilgrims John Alden, William Mullins, Isaac Alorton, Francis Eaton and George Soule.

Once the lineage was proved, it not only made Marge's mother happy, it gave her a reason to live. She's helping others with genealogy and she and Marge are starting a search into her family background (the first search was for her husband's family).

### Family Traits

Marge is excited that so far they have discovered that writer John Jakes is her second cousin on her mother's side. Jakes wrote the historical novel series that included *The Seekers*, *The Bastards*, *The Americans*.

"Family traits seem to continue through families," said Marge. "On my mother's side the great interest is history, while on my father's side there were a lot of lawyers, doctors and farmers."

She has also discovered another cousin who is a vicar in England and she and her husband, Gus Hallum, plan on visiting him this spring.

### The Books and Records

Marge explained that there are all kinds of books and records to help people in their search for ancestors.

"There are family genealogy books, every state keeps vital records, the Denver Public Library has one of the best genealogy divisions in the country, the Mormon Church in Salt Lake City has extensive records of families all over the country, many towns and cities and counties have histories. Some have lists of everyone buried in cemeteries."

"I used many New England books because that's where my family is from. New England, Pennsylvania and the South are

very well documented. Some states do not have as much history."

The National Archives are good sources, they contain military records and census rolls. There are divisions of the National Archives in Washington, DC, in Atlanta, Chicago, Kansas City, Ft Worth, Denver, San Francisco, Los Angeles, Seattle, New York, Philadelphia and Boston.

The Genealogical Book Company, 521-12 St. Paul Place, Baltimore, Md, 21202 has a catalogue of hundreds of the books and records that are available.

Marge said she found the biggest gap in family records was around 1850, when migrations West kept people too busy to keep extensive records.

"A lot of people used their family Bibles. A lot of Bibles were used in Wisconsin; they would put in a lock of baby hair with a birth, they would put in pressed flowers after a death."

"Sometimes the going gets so rough in your search you have to hire a professional genealogist to dig it out of the archives."

### Time the Only Difference

Marge said there is one rule to keep in mind. "Don't give up," she said, "look somewhere else, ask someone in the family what else they remember."

"Keep writing those letters to county clerks and offices of vital statistics. And send typed letters, not longhand." (In order to do this Marge sold her beloved Volk and bought an electric typewriter.)

But she insists it's all worth it. "Nothing makes history come more alive than stories of your own family."

"You will learn about their struggles and their survival. The only difference between you and your ancestors is time."

## I HAD LUNCH WITH MY ANCESTORS

by Sybil (Smith) Cook

At Logan International Airport in Boston, while waiting for a plane and eating lunch at Host International restaurant, I was suddenly brought face-to-face with two generations of my Soule ancestors. Facing me on the wall was a group of framed pictures of early celebrities and other bits of Americana. Included in the group was the Soule family of Taunton, Massachusetts-- a studio portrait about 28" x 24" taken some time prior to 1898. You may imagine my surprise !

Seated in the middle of the group is Leander Soule<sup>7</sup>, his wife Caroline Lucinda (Graham) beside him. On his right is the oldest daughter, Annie (Soule) Lewis with her son Pereyval. Beside them is the youngest child, Carleton, a young man of perhaps twenty years. In the rear row, left to right, a cousin, Cora Reed, then Florence (Soule) Smith, my mother. Beside her: Caroline (Soule) Metcalf with her husband Wilmot; then Leander and "Lu's" older son, Harry with his wife and baby Jeannette. Jeannette became Mrs. Alfred Friedland and attended Soule Kindred reunions in recent years. Her granddaughter, Deborah Jerome, became a member of Soule Kindred in 1981 and attended the reunion in Plymouth.

No one at the restaurant could give me any information about the picture, so the mystery of how this family group, photographed in the late eighteen-hundreds came to be on the wall of a restaurant at Logan International Airport in 1981, had to remain a mystery.

###

Mrs. Arthur W. Hall of Whitman, MA furnished a copy of the picture reprinted below.



From Shirley S. Smith:

In Florida I ran across a book by George E. Buker, titled Swamp Sailors, A Description of Riverine Warfare in the Everglades, 1835-42. In speaking of the hardships of fighting in the swamps, he wrote, on page 128: "Life was so difficult that at one of the morning musters Passed Midshipman Preble reported that two of his sailors, Silas Soule and James Gamble, had deserted during the night, taking one of the canoes, a musket, some provisions and a bag of clothes. They must have been desperate men indeed to undertake such an adventure in an area where even the guides became confused. From the records there is no indication what befell Soule and Gamble." Mr. Buker noted that his information came from George Henry Preble, A Canoe Expedition into the Everglades in 1842, page 40. Published in 1945.

\* \* \* NOTICE TO CONTRIBUTORS (All who read the Newsletter): \* \* \* \* \*

\* \* The deadline for submitting material for the July Newsletter will \* \* be June 1, 1982. Because my family will be taking a vacation trip \* \* to the Pacific Northwest from mid-June to mid-July, I will have to \* \* send the finished copy for the newsletter to the printer, Fred Soules, \* \* before we leave. \* \*

\* \* I urge you to continue clipping newspapers for Soule-related \* \* items, write that story of your own branch of the family, or tell us \* \* of some interesting genealogical searches you have done. Questions \* \* and answers are particularly welcome. Send directly to the editor: \* \* Geraldine Soule Schlosser, 3060 N. Hackett Ave., Milwaukee, WI 53211 \* \* \* \* \*

MIRROR Wednesday, December 2, 1981 11SC  
Scituate, Massachusetts



Sent in  
by George  
S. Soule



Costumed

Plymouth Plantation staff member Joe Hamilton, dressed as Pilgrim George Soule, helps Sean

Chandler of the Jenkins School in Scituate dress in pilgrim garb.



## SOULES of Bladen, Brunswick, and Columbus Counties, NC

by C. G. Hogan, CGRS  
PO Box 2132, Asheville, NC 28802-2132

20 Jan 1982

Benjamin<sup>4</sup> Sowl was granted 300 acres above Swan Creek (Craven?) Co, NC and 320 acres on Hammond Creek, Bladen Co, NC on 20 Feb 1735. Joseph<sup>4</sup> Sowl received a grant of 640 acres in Bladen Co, NC, 10 Sept 1735.

Three sons of Benjamin<sup>4</sup> Soule: Silvanus<sup>5</sup> (b. 1722), Benjamin<sup>5</sup> (b. 1724), and Joseph<sup>5</sup> (b. 1731) Soule appear on the 1790 Census of Brunswick Co, NC. Also listed on this census are Timothy<sup>6</sup> and Nathaniel<sup>6</sup> Soule, grandsons of Joseph<sup>4</sup> Soule.

By the 1800 census the fifth generation Soules are not listed as heads of households, and if yet living, would be age 70 or older. Those listed are: Joseph<sup>6</sup> (b. between 1755-73) (parents unknown) in Bladen Co, NC; and in Brunswick Co: Nathaniel<sup>6</sup> (b. between 1755-73) and Timothy<sup>6</sup> (b. between 1755-73), and a new one, John<sup>6</sup>.

Columbus County, NC was created from Brunswick and Bladen in 1808, and the 1810 Columbus Co. census enumerator only listed initials: J. (prob. Joseph<sup>6</sup>); B. (prob. a new Benjamin<sup>6</sup>); N. (prob. Nathaniel<sup>6</sup>); T. (prob. Timothy<sup>6</sup>); and J. (prob. John<sup>6</sup>).

In 1820, in Columbus Co, only Joseph<sup>6</sup> and Nathaniel<sup>6</sup> remain of the old family heads. New heads of families listed in Columbus are: Isham<sup>7</sup>, Amelia<sup>7</sup>, Joshua<sup>7</sup>, and Titus<sup>7</sup>. Christian<sup>7</sup> appears in Brunswick County.

In 1830, Joseph<sup>7</sup>, Benjamin<sup>7</sup>, Nathaniel<sup>7</sup>, Isham<sup>7</sup>, Titus<sup>7</sup>, Levi<sup>7</sup> and Celia<sup>7</sup> appear. In 1840, Joseph<sup>7</sup>, Benjamin<sup>7</sup>, Isham<sup>7</sup>, Teters<sup>7</sup>, Isiah<sup>8</sup>, Levi<sup>7</sup>, Calvin<sup>7</sup>, and Elizabeth<sup>7</sup> appear in Columbus, and Bryant<sup>7</sup> appears in nearby Duplin Co, NC.

In 1850, Joseph G.<sup>7</sup> (b. 1810), Nathaniel<sup>7</sup> (b. 1800), Isham<sup>7</sup> (b. 1793), Isiah<sup>8</sup> (b. 1805), Ann<sup>7</sup> (b. 1766) and Simon<sup>7</sup> (b. 1799) are listed. Ann, age 84, is living with Joseph G.<sup>7</sup>, next door to Nathaniel<sup>7</sup>, leading to speculation that she is the mother of Joseph and Nathaniel, and possibly the widow of Nathaniel<sup>6</sup> (b. between 1755-73).

Isiah<sup>8</sup> Soles, b. ca 1805 Brunswick Co, NC, married before 1832, Tabitha \_\_\_\_\_, b. ca 1808 NC. Their household as enumerated 12 Sept 1850 consisted of: Joshua<sup>9</sup> (b. ca 1832), Alva<sup>9</sup> (b. ca 1837), Irene<sup>9</sup> (b. ca 1839), Alice<sup>9</sup> (b. ca 1841), Molly<sup>9</sup> (b. ca 1845), and Lennon<sup>9</sup> (b. ca 1847). If Joshua<sup>9</sup> is indeed the eldest son, one could speculate that Isiah<sup>8</sup>'s father was Joshua<sup>7</sup>. This hypothesis is being investigated.

Joshua<sup>9</sup> was b. 2 July 1832 Columbus Co, NC, and m(2) 6 Oct 1859, Eleanor Buffkin, b. 27 July 1837, d. 27 Nov 1906 Columbus Co, NC. She was a daughter of Bethel Buffkin (ca 1806 SC--1881) and wife, Mary Crowson (b. ca 1808 NC). Joshua<sup>9</sup> died 27 Sept 1898 Columbus Co, NC.

Additional information and documentation is solicited on this line. Please address C. G. Hogan, CGRS, PO Box 2132, Asheville, NC 28802-2132.

**(Mr. Hogan is a Certified Genealogical Record Searcher who aided Kindred member H.H. Patrick of Asheville, NC in researching North Carolina Soule families.)**

The following two pages were prepared in 1981 by Mrs. Dorothy Heinerikson, 8141 Ward Parkway, Kansas City, Missouri 64114.

1. GEORGE SOULE, Mayflower Pilgrim, 1620, married Mary Becket (about 1623)  
Born (about 1593) Died: 1679 Died: Dec.1676
  2. Their son, JOHN SOULE, married Rebecca Simmons 1654  
Born: 1632 Died: 14 Nov.1707 Died: (about 1665)
  3. Their son, JAMES SOULE, married Lydia Thompson on 14 December 1693  
Born 4 Oct. 1659;Died:21 Aug.1744 Born: 5 Oct 1659;Died: 14 March 1741
  4. Their son, JACOB SOULE, married Mary Thomas on 31 March 1731  
Born 30 Aug 1702;Died 20 Aug 1744 Born:12 Feb 1700;Died 1 March 1749
  5. Their son, JACOB SOULE, married Sarah Shaw on 21 Jan. 1762  
Born 4 Jan 1736;Died 20 Aug. 1823 Born: 1743; Died 11 Oct. 1792
  6. Their son, JOSEPH SOULE, married Bessie Soule on 17 June 1821  
Born 2 May 1851; Died 9 June 1851 Born 12 Nov 1781; Died 12 Dec. 1856
  7. Their son, EZRA SOULE, married Mary Weaver on 26 Dec 1852  
Born 2 Feb 1825; Died 31 Aug.1906 Born 15 July 1832; Died 23 March 1867
  8. Their son, JOSEPH SOULE, married Ida May Williams on 9 April 1882  
Born 4 Jan 1860;Died 25 April 1937 Born 20 Jan 1865;Died 21 Dec 1932
  9. Their daughter, MARGIE DOROTHY SOULE, married Caspar H. Elstner  
Born 22 Nov 1892; Died 21 May 1970 Born 23 June 1887; Died 30 Oct 1966
  10. Their daughter ,DOROTHY ELSTNER, married Joseph J. Heinerikson (div.)  
Born 15 June 1922 Born 3 Dec 1921
  11. Their son, JAMES JAY HEINERIKSON  
Born 9 June 1947; Died 22 Nov 1980
- Their daughter, THERESA ANN HEINERIKSON, married Lawrence Wiser on 10 Nov 1980  
Born 13 Oct 1949 Born 1 Feb 1938
- Their daughter, FAITH MARIE HEINERIKSON, married Christopher Pugh on 19 June 1976  
Born 1 July 1953 Born 6 Dec 1952
- Their son, MARK THOMAS HEINERIKSON, married Sherry Vickery on 6 Aug 1974  
Born 15 Aug 1955 Born 6 Dec 1955
- Their son, PATRICK MICHAEL HEINERIKSON, married Linda K. Block on 13 Oct 1979  
Born 20 Apr 1959 Born 19 June 1961
- Their son, KEVIN JOHN HEINERIKSON  
Born 20 Dec 1961



The following four pages were submitted by Nona Gutzeit,  
68 Lime Avenue, Apt. 10, Long Beach, California 90802.

GEORGE SOULE

- GEORGE SOULE, b. England prob. bet. 1539-1600, d. Duxbury  
bef. 22 Jan. 1679 (O.S.) m. prob. in Ply- p.1  
mouth bef. 1626 MARY BUCKET (?BECKET) who arrived  
in Plymouth bef. 31 July 1623 aboard the Anne. She  
d. in Duxbury in December 1676 - unidentified.
- NATHANIEL<sup>2</sup> SOULE (George<sup>1</sup>), b. prob. Plymouth ca. 1637,  
d. Dartmouth bef. 12 Oct. 1699. m. p.8  
ROSE ----, unidentified. d. prob. Dartmouth after 15  
May 1702 and prob. bef. May 1708.
- SYLVANUS<sup>3</sup> SOULE (Nathaniel<sup>2</sup>, George<sup>1</sup>), b. Dartmouth ca.  
1684; d. prob. Tiverton RI after 9 p.20  
June 1754; m. perhaps Swansea ca. 1705 SARAH SLADE  
dau. of William and Sarah (Holmes) Slade.
- WILLIAM<sup>4</sup> SOULE (Sylvanus<sup>3</sup>, Nathaniel<sup>2</sup>, George<sup>1</sup>), b.  
Swansea ca. 1711; d. Tiverton RI ca. p.66  
Aug. 1778. He m. (1) Swansea 20 Aug. 1733 JEMIMA  
BAKER, dau. of Joseph and Martha (----) Baker, b.  
Swansea 1714; d. Tiverton RI ca. 1737. He m. (2)  
prob. ca. 1738 KEZIAH GIFFORD, dau. of Stephen and  
Mary (----) Gifford, b. Dartmouth 27 Feb. 1720; d.  
Tiverton RI Sept. 1768
- JOSEPH<sup>5</sup> SOULE (William<sup>4</sup>, Sylvanus<sup>3</sup>, Nathaniel<sup>2</sup>, George<sup>1</sup>),  
b. Tiverton RI ca. 1740; d. Broadalbin, p.211  
NY ca. Sept. 1822. He m. Tiverton RI Dec. 1763  
CHARITY TRIPP, dau. of Francis and Wait (Chase)  
Tripp, b. Dartmouth 3 June 1747; D. Broadalbin, NY ca.  
June 1835.
- ROBERT<sup>6</sup> SOULE (Joseph<sup>5</sup>, William<sup>4</sup>, Sylvanus<sup>3</sup>,  
Nathaniel<sup>2</sup>, George<sup>1</sup>), b. Tiverton, RI \*  
3 Nov. 1767; d. Broadalbin, NY 2 Feb. 1848; m. at  
Broadalbin, NY, 1 Jan. 1793 to 1) MARIBE DURFEE, b.  
Tiverton, RI 24 Oct. 1768, d. prob. Broadalbin, NY  
23 May 1817.
- DURFEE<sup>7</sup> SOULE (Robert<sup>6</sup>, Joseph<sup>5</sup>, William<sup>4</sup>, Sylvanus<sup>3</sup>,  
Nathaniel<sup>2</sup>, George<sup>1</sup>) b. Montgomery  
County, NY or Westport, Mass. 17 Nov. 1797; d. 15 Mar.  
1864, buried Old Cemetery, Angola, Ind. m. 4 July  
1821 MARGARET COSLOMAN, b. 30 July, 1802, d. 8 Jan.  
1877. Buried Old Cemetery, Angola, Ind.

## GEORGE SOULE

WILLIAM HENRY<sup>8</sup> SOWLE (Durffee<sup>7</sup>, Robert<sup>6</sup>, Joseph<sup>5</sup>,  
William<sup>4</sup>, Sylvanus<sup>3</sup>, Nathaniel<sup>2</sup>,  
George<sup>1</sup>, b. 4 Dec. 1837, d. Osceola Tnship, 18 July,  
1878, m. ca. 1865 ELLEN AUSTIN, perhaps a widow, b.  
NY ca. 1834, d. Pentwater, Michigan 2 Sept. 1909.

Children (SOWLE) b. Sowle settlement (Homestead?)  
corner Indiana, Ohio and Michigan  
i ADA<sup>9</sup>, m.----SPIDMCRE; 1 son Joseph Skidmore  
living Tampa, Florida 1969 nfr  
ii MAY, m.----ENGLISH, living Pentwater, Mich.  
4 Sept. 1909 nfr

iii CLIVE nfr

iv ED nfr

v ROSA ARILLA DEAN b. 1 Oct. 1867, d. 30 Jan.  
1938, Houston, Harris County, Texas.

All children presumably b. Sowle Homestead.

William Henry<sup>8</sup> Sowle, a logger, was killed riding  
a log truck; children sent to Michigan Children's  
Institute.

ROSA ARILLA DEAN<sup>9</sup> SOWLE (Wm. Henry<sup>8</sup>, Durffee<sup>7</sup>,  
Robert<sup>6</sup>, Joseph<sup>5</sup>, William<sup>4</sup>,  
Sylvanus<sup>3</sup>, Nathaniel<sup>2</sup>, George<sup>1</sup>) b. Sowle Homestead  
corner Indiana, Ohio and Michigan, 1 Oct. 1867, d.  
Houston, Harris County, Texas, 30 Jan. 1938, m. St.  
Mary's Church, Manistee, Mich. 26 Sept. 1892  
WILLIAM LEZOTTE, b. Two Rivers, prob. Wisc. 29 Feb.  
1854, d. unk.

Children (LEZOTTE) First 3 b. prob. Pentwater, Mich.  
Fourth in Beaumont, Texas.

i William Leslie<sup>6</sup> b. 26 July, ca. 1892 d. Vinton,  
La. m. No issue

ii Pearl Margaret b. 3 March 1897, d. San Antonio,  
Texas 3 Oct. 1963, m. Robt. Jefferson Davis.  
No issue

iii Raymond Frederick b. 13 Jan. 1899, d. Houston,  
Texas 20 Nov. 1964; m. 1 Apr. 1935 WANDA KEYES  
(widow) No issue.

iv Nona Thelma b. Beaumont, Texas, 10 June, 1904  
m. San Antonio, Tex. 15 Jan. 1941 CARLOS LOUIS  
GUTZEIT d. 3 March, 1980, Long Beach, Calif.  
No issue.



## GEORGE SOULE

First five generations, as well as mention of the SIXTH contained in VOLUME THREE of MAYFLOWER FAMILIES Through Five Generations (pages indicated in margin). This book edited by Anne Borden Harding, Historian General General Society of Mayflower Descendants (1980).

Rev. G. T. Ridlon's "History, Biog., Gen. of Families named Sole, Solly, Soule, Sowle" p.21<sup>6</sup> v.1, p.691 v.2

Same source p. 690 v.2; p.21 v.1 (1:21) Vital Records of Dartmouth; 2:471 Pub. Vital Records of Dartmouth; p.73 J.V. Allen's "Geo. Aller. of Sandwich, v.2, p.47 Records of Wiverton County Court; 2:469 Published Records of Dartmouth.

Affidavit dated April 3, 1946 signed Leslie & Rhoda Jane (Wells) Sowles giving data regarding Durffee.

Letter dated 9 November 1943 from Myron Leslie and Rhode Jane (Wells) Sowle regarding parentage of Wm. Henry<sup>8</sup> Sowle.

Letter 4 Sept. 1909 from May English to mother (Mrs. Rosa Lezotte) Rosa Arilla Dean<sup>9</sup> Sowle, regarding Ellen Austin's death.

Letter 1 June 1945 from G. F. Dorr, establishing May English<sup>9</sup> Sowle as sister to Rosa<sup>9</sup> Lezotte (Sowle).

Letter 29 June 1944 regarding Bapt. Records and parentage of Rosa Lezotte (Sowle)

Letter 3 May 1946 from Michigan Children's Institute regarding parentage of Rosa Lezotte (Sowle)

My Birth Certificate (Nona Lezotte Gutzeit<sup>10</sup>).

Letters 26 May and 2 July 1946 from Mr. G.F. Griffin, State Historian of California Society of Mayflower Descendants regarding this line of descent.

Corrections on original "Statement of Line of Eligibility" from Col. John Soule's M33 5 Gen. Project filed with Conn. 29,681 & Five Gen. Project.



GEORGE SOULE

This line has been accepted by the National and the Pennsylvania Societies of the MAYFLOWER DESCENDANTS.

I am a Life Memeber - General Society #17121; Pennsylvania Society member #721.

A former member Daughters of the American Colonists on this line, #7422; Charter Member Terre Haute, Indiana. Ex-State Registrar, ex-Regent William Penn Chapter, Philadelphia, Pennsylvania.

"The Society of Colonial Wars recognizes the eligibility for membership of any descendant of GEORGE SOULE" Reference: p.4, v.3 Mayflower Families Through Five Generations.

My husband, Carlos Louis Gutzeit, a research scientist, born in San Antonio, Texas, as indicated with iv of 9's children, page 3, earned two degrees in Chemistry (one no longer given) at Cornell University, Ithaca, NY where he taught Microscopy and Spectroscopy; and a Ph.D. from Texas University, Austin, Texas.

I reside at 68 Lime Ave., Long Beach, California and should be delighted to help anyone with this line of descent.

\*\*\*\*\*

MAKE YOUR PLANS AND RESERVATIONS NOW  
TO ATTEND

*Soule Kindred Reunion  
Cincinnati, Ohio  
July 29 - August 1, 1982*



# SURPRISING CINCINNATI

*Winston Churchill called it  
the most beautiful inland city  
in America — and a lot  
of people are striving to prove  
he was right!*

Cincinnati is embarking on a mission to tell the rest of the world what its own residents have known for a long time — the city is one of the most attractive and surprising "undiscovered" major cities in the country.

Some examples of the variety and quality of what Cincinnati has to offer are:

- A downtown that is compact, safe, vibrant and used constantly by Cincinnati folk and their guests.
- Outstanding museums and music.
- Great restaurants exemplified by the fact that there are more four- and five-star restaurants per capita in Cincinnati than anywhere in the country except San Francisco.
- A major zoo and one of America's finest theme parks.
- A variety of sports, both spectator and participatory.
- And, to take advantage of the Ohio River that winds through the seven hills of the city, a full menu of riverboat cruises.

*1982 Soule Kindred Reunion  
Cincinnati, Ohio  
July 29th - August 1st*



ADDRESS CORRECTION REQUESTED  
RETURN POSTAGE GUARANTEED

SOULE KINDRED IN AMERICA, INC.  
P.O. BOX 1146  
DUXBURY, MA 02332



BULK RATE  
U.S. POSTAGE  
PAID  
WACO, TX  
Permit No. 1



Join SOULE KINDRED IN AMERICA, INC. now.