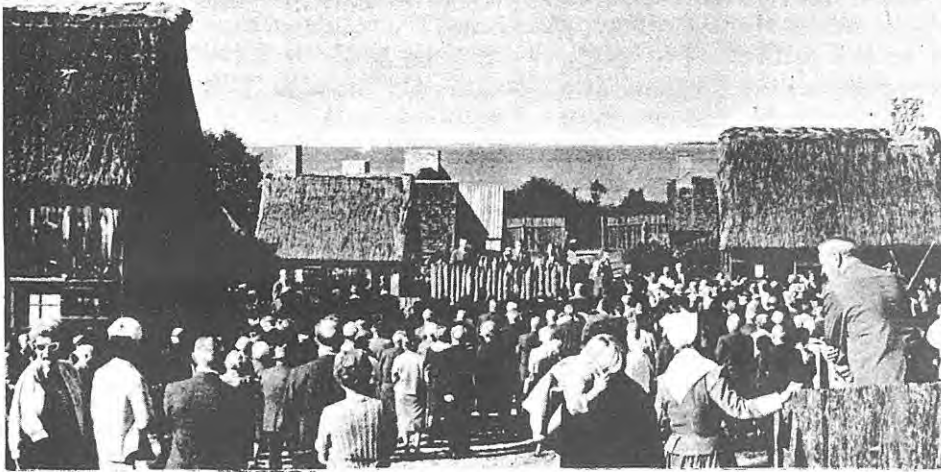


George Soule, Editor

Published by the SOULE KINDRED, P. O. Box 259, South Duxbury, Mass. 02374



PLIMOTH PLANTATION

§ Late in 1620 a group of Englishmen landed in the New World after a stormy 66 day voyage across the North Atlantic in a small ship - the Mayflower. They had left the homes and land they loved seeking a place to worship as their consciences directed. George Soule was one of this group.

§ These Pilgrims built a colony which they called Plimoth Plantation or New Plimouth. Their Colony and their ideals have been firmly planted into the hearts and history of America. In securing their own freedom of con-

science, the Pilgrims set a pattern which was duplicated by many other pilgrims of many different creeds who followed to a new life in our country.

§ In 1947 a new Plimoth Plantation, a non-profit educational organization, was founded to create an understanding of our ancestors. Using old records and eyewitness accounts of visitors to the original colony, Plimoth Plantation is being recreated as it looked in 1627, some seven years after the Pilgrims landed at Plymouth Rock. This new Plimoth Plantation is a full-scale functioning village where guides and hostesses demonstrate the daily life of the 17th century. In this setting the visitor may see the Pilgrims as people who mortgaged themselves and their future for an ideal. Here one can understand the courage and faith of our forefathers - and that is the avowed purpose of the new Plimoth Plantation, located just two miles south of famed Plymouth Rock in Plymouth, Massachusetts.

§ Plimoth Plantation also owns and exhibits the Mayflower II - the Pilgrim Shallop, the First House and 1627 House, all on the waterfront near Plymouth Rock.

GEORGE SOULE HOUSE DEDICATED

§ The replica of George Soule's house has recently been completed and was dedicated 12 September 1966. A descendant, Horace Homer Soule III, officiated for the dedication of the house. He presented a brief biography of our Mayflower ancestor, then



PLIMOTH PLANTATION



Horace H. Soule III coaxes the fire into activity at the George Soule House.

visited a neighboring house in the village, gathered a pan of coals from the fireplace and with them lit the first fire on the new hearth. Cranberry juice and corn bread were then distributed to the enjoyment of all attending. When are you going to visit this fascinating and hallowed place?

Editor's note: The Soule Kindred wishes to thank Horace Soule III & all the other "descendants" who helped raise the funds for the Soule House. STILL NEEDED are furnishings for it.

HISTORICAL BACKGROUND

§ The name of SOULE is of ancient origin - a fact true of all surnames. Some earlier authorities have contended that our name came from that of the fish; others allege it was derived from the local title for a pond in Kent County, England. To us, a more plausible theory is that it originated in the ancient Basque province of Soule which lay astride the present mountainous border between France and Spain. Certainly, it is far from being an uncommon name in France today, although the French use the accent SOULÉ in both spelling and pronunciation. We do know that the immigrant ancestor for most of us, George Soule of the Mayflower, was from England. That fact presents no obstacle to the theory that the family is of French origin. There is evidence that a member of the family accompanied William the Conqueror (if one adheres to English history; or William the Bastard if one prefers the French version) from Normandy to England in 1066. This is far from the only opportunity for migration as the history of France and England were closely interwoven for centuries. One need only recall that the English cow remained in the stable while the French boeuf became beef; the sheep also stayed in the language of the farm while mutton came to the dining room. As this is written, we have little hope of any deeper exploration of the early Soule background. However, if any member of our organization has the knowledge, experience, patience, and financial resources to dig out the facts and provide adequate documentation, it will be a pleasure to publish such information for the benefit of all concerned.

§ The story of our forefathers is the story of America, from the earliest Colonial days through the formative years of the United States to the present days. We find our ancestors serving in the earliest wars, filling important positions in local governments, men of substance, but with a wanderlust. They were seamen and fishermen, farmers and trades people. They followed the great Quaker migrations of the 1730s to Western Connecticut and Dutchess County, New York; and even farther to North Carolina. These movements undoubtedly were part of the urge to find more, better, and cheaper land - even though it might mean privation and hardship. Members of the family were there when our frontiers advanced slowly Westward. Soules have always been pioneers. Starting from Massachusetts we have found them in Maine, upstate Vermont, and New York before the American Revolution. By the time of the first United States Census in 1790 there were 115 families of the Soule-Sowlé name or variants enumerated in twelve states comprising some 641 individuals. Hundreds more bore other surnames even though still legitimate descendants of George Soule. But to go on with our story, we know that at least one Soule family was in Ohio shortly after 1800, another in Indiana about ten years later, several in Michigan by 1830 and literally dozens followed the Gold Rush to California and are enumerated in the 1850 Census of that state.

§ Research into the detailed biographical story of these people is fascinating but frustrating. Outside of Massachusetts and some of the Maine towns, records were poorly kept if at all. Some states did not even begin to record vital statistics until 1923. Graves were frequently marked by field stones without inscription placed in a corner of the farm, then the stones were removed by subsequent tenants of the premises. Invaluable family tradition is rendered suspect by substantial variance from recorded history. It is our hope, with your help and cooperation, that it may be possible to continue collecting the facts and publish an authoritative and fully documented genealogy of the descendants of George Soule of the Mayflower in this series of quarterly newsletters. Save them.

SPELLING VARIANTS of SOULE

§ In 1909 the U.S. Bureau of the Census published a very interesting book entitled "A Century of Population Growth (1790-1900)". Page 262 contains a statement to the effect that the names SOULE, SOAL, SOALE, SOLDS, SOLE, SOLES, SOLL, SOUL, SOULS, and SOWLE are variants in the spelling of the same family name found in the various census returns. Our own research has indicated that Soules and Sowles are far from uncommon.

§ The reason for this is apparent to the historian. Today we have a nation of sophisticated literacy. We even have numbers to be sure that our names identify ourselves instead of someone else. It is only in the underdeveloped countries or in a mental institution where one can find an individual unable to read and write fluently. Consequently, one

SPELLING VARIANTS - continued

unable to spell his own name is indeed a rarity. This is solely a phenomena of modern times. Not so many years ago the individuals could usually pronounce their own names even though unable to read, write, or spell. However, deeds and wills as well as other papers had to be prepared, so a scribe wrote the document to be signed by an "X" before an appropriate number of witnesses. It was only natural that the scribe had to depend on phonetics and write the name as it sounded to him. Try getting different sounds out of Soul, Sole, Soal, and Sowl, or even Soule, Soale, or Sowle!

§ A large family was probably referred to as the Soules. When junior came to town he probably referred to himself as one of the Soules - so we soon had many variants ending in the final "s"; so it goes.

§ These variants are frequently a valuable clue in tracing a family connection. For example, Sowle was adopted early in the Dartmouth, Westport and New Bedford region of Massachusetts and adjoining areas of Rhode Island. Their trail is clearly flagged into New York state (area centered in Broadalbin), thence to Ohio, Indiana, and Michigan. On the other hand, some branches have re-adopted Soule after cherishing other variants for generations. Suit yourself. Most of us are cousins!

Editor's note: I appreciate this article by Col. Soule - especially after being called various names over the years and having people spell my name "any ol way"- even on certificates (I have 2 misspelled!). I am sure all of us have had this problem. Look for "SOLE, SOAL, or SOOLAY?" - This interesting article by George Ernest Bowman, reprinted from the July 1912, Vol. XIV of the Mayflower Descendant, is scheduled to appear in a later newsletter.

THE SOCIETY OF MAYFLOWER DESCENDANTS

§ The purpose of the Society is to perpetuate to a remote posterity the memory of our Pilgrim Fathers and to maintain and defend the principle of civil and religious liberty as set forth in the Compact of the Mayflower. This document was drawn on board the Mayflower on 11 November 1620 (old style) "in ye year of ye reign of our sovereigne Lord, King James of England, France and Ireland, ye eighteenth, and of Scotland ye fiftie-fourth" as a platform of government. It was signed by forty-one of the principal men aboard, George Soule being the thirty-fifth.

§ The Compact which was signed on the Mayflower was a fundamental doctrine and became the source of the Declaration of Independence and of the Federal and State Constitutions.

§ There had been great interest in this heroic band from Colonial days through the early days of our nation. Curiously enough, the first interest in forming an association of descendants of Mayflower passengers resulted in the formation of the New York Society of Mayflower Descendants in 1894. Interest then spread to Connecticut where the second State Society was formed. The Massachusetts Society was organized in 1896 with Pennsylvania following. In 1897 these four State Societies organized a General Society which since then has issued charters to the District of Columbia and every State of the union. Members are elected to the State Societies and the General Society, upon verification of the lineage validity, assigns membership numbers in the order in which their names are entered on the rolls.

§ The General Society of Mayflower Descendants publishes the Mayflower Quarterly and the Mayflower Index. This Index gives, in alphabetical order, the names of all persons proven by the records in the office of the Historian General in Plymouth to be descended from a passenger on the Mayflower when it landed at Plymouth in 1620. Although there were 104 pilgrims, descent has been proven from only 23 families containing a total of 50 passengers. The current edition of the Mayflower Index, containing members and ancestors in line of descent accepted up to 1 January 1960, gives 531 entries of Soule, Soules, Sowle, or Sowles names. Many more descendants of George Soule of the Mayflower through distaff lines, appear under those names, where numerous other surnames have been acquired by marriage. An important

continued on page 4

THE SOCIETY OF MAYFLOWER DESCENDANTS (continued)

objective of the Soule-Sowle Kindred is to interest eligible descendants of George Soule in the Society of Mayflower Descendants, and to ASSIST them in preparing lineage papers. An approved lineage paper is a permanent record. The cost is nominal - so why wait?

The enclosed MAYFLOWER COMPACT is courtesy of the Society of Mayflower Descendants. We especially hope that it will be of educational value to our young people.

RECENT QUESTIONS AND ANSWERS

by Col. John Soule

Q. How are you progressing with the new Soule Genealogy?

A. Due to the vast amount of research still needed, we've finally decided it best to start this news letter and publish the information available from time to time.

Q. I would like some dates pertinent to marriage, family and death of Sally Soule, wife of Ezra Fuller of Hartford, Me.

A. Ezra Fuller (Mayflower Index No. 14, 295) was born Sept. 1789 in the Hartford area (although Hartford wasn't established until 1798) and died 3 March 1864 in Hartford. Sarah Lucinda⁷ Soule was born 31 August 1801 Hartford, dau. of Anson⁶ & Lucinda (French) Soule descended William⁵, Jacob⁴, James³, John², George¹. Date and place of marriage are unknown but the late 1820s or early 1830s in Maine appear likely. She also died in Hartford 17 Nov 1889 and is buried with her husband in the Maple Grove Cemetery, Hartford, Me.

References: Mayflower Society Records ME-164

Town Records of Hartford, Me.

Ridlon's Soule Genealogy

Q. Do you have any proof that William Soule, the Loyalist of Alburg, Vt., was the son of Ezekiel?

A. Mayflower Index Nos. 32, 062 and 32, 223 give this line. Ridlon p454 says he was born 4 Sept 1738 Dartmouth, Mass. ; Duxbury VR (p159) shows William, son of Ezekiel, was baptized 28 Sept 1740. This should put you on firm ground.

Q. Do you know the parents of Ann or Anna Sewall, wife of William⁵ Soule (1738-1811)

A. No. There is more urgent Soule research precluding our effort along these lines.

Q. Can you advise me how to establish the identity and parentage of John Soule aged 30/40 in the 1840 Census of Village of Brockport, Sweden Township, Monroe County, N. Y. ?

A. We have sent you considerable detail concerning two of his sons who served in the Union Army which was extracted from their pension files in The National Archives. We suspect that his parents were the 70 to 80 year old male residing with Benjamin Soule in an adjoining residence in 1840, who apparently died by 1850, and the 84 year old Joanna Soles (sic) residing there in 1850. We have also sent you suggestions for further research.

Q. Aren't there now some good Soule Genealogies already in print?

A. Dartmouth Branch of the Soule family by Waldo Chamberlain Sprague appeared serially in The American Genealogist between July 1962 and October 1964. It is excellent (we know of only one error) but covers only one small segment of the family and that not conclusively. A long out of print booklet by Charles E. Banks covers the majority but not all of the families of Freeport, Maine. Finally, there is the 1926 book in two volumes by Rev. Gideon T. Ridlon entitled "A Contribution to the History, Biography and Genealogy of the Families Named Sole, Solly, Soule, Sowle, Soulis with Other Forms of Spelling." It is indexed only to the distaff side but we have a complete separate index. Admittedly, it has an invaluable collection of material, but also has many errors and erroneous conclusions. Consequently, it must be used with caution. Finally, it is woefully incomplete. One is forced to the suspicion that Ridlon depended largely on contributed material with minimal research and verification. We hope to avoid these pitfalls.

RECENT QUESTIONS AND ANSWERS (continued)

Q. Early issues of The Mayflower Descendant, notably 3:256, 29:83 & 84, mention plans for a forthcoming genealogy of George Soule and the heads of the other 22 Mayflower families. Was that ever published?

A. Not in The Mayflower Descendant which suspended after Vol. 34 in 1937. However, in 1956 the Massachusetts Society of Mayflower Descendants published a book entitled "Families of the Pilgrims" compiled by Hubert Kinney Shaw. This gives a biographical sketch of the heads of each of the 23 families from whom descent has been traced, together with their children and grandchildren. Although a valuable reference work, we are not wholly in agreement with all items pertaining to George Soule and his descendants.

NOTE: We hope that the QUESTIONS AND ANSWERS will become a regular feature of newsletter. The only rule is that questions must pertain to someone named Soule, Sowle, or variants; this is even excepted when the query pertains to anyone within five (5) generations of our Mayflower ancestor. Names, dates, and places are always important.

FUTURE NEWSLETTERS WILL INCLUDE :

A BIOGRAPHY OF GEORGE SOULE
 CHILDREN & GRANDCHILDREN of GEORGE SOULE
 PROMINENT MEMBERS of OUR FAMILY
 "GIVEN NAMES"

MILITARY HISTORY - Part I - Colonial Wars
 Part II- American Revolution
 Part III- War of 1812
 Part IV- Other Early Wars
 Part V - Mexican War
 Part VI- Civil War (There were 575 different members of the family in the Union Army; another 125 or so in the Confederate Army. It would take many pages just to list the men's names, dates and organization. We have next of kin in a large percentage (i. e. parents, wives, children), generation in descent from George Soule, casualties (i. e. POWs, WIA, KIA, DOD) which can be either coded on total listing or listed separately.

Other Parts to Include the Indian Wars, Spanish-American War, World War I, World War II, Korean War, and the "Vietnam Conflict." On these last items, the Kindred needs YOUR help compiling the information which carries information on living Soules.

FOURTH GENERATION FROM THE MAYFLOWER (in multiple parts)

FIFTH GENERATION FROM THE MAYFLOWER (in multiple parts)

SOULE BLOOD IN OTHER FAMILIES

WIVES OF SOULE MEN (Hundreds of Pages of Indexes)

GENEALOGICAL RESEARCH

FAMILIES OF SPECIFIC AREAS (i. e. Duxbury, Middleboro, Plymouth, etc.)

The above articles are to be written by Col. John Soule. Other Newsletter articles are:

A Reprint of the SIGNATURE OF GEORGE SOULE¹.

The Proposed PLYMOUTH NATIONAL PARK (Many great historical national shrines have been established in the USA. An exception to this is our very historical ancestral pilgrim home. There are presently 3 different plans by the National Park System to establish & preserve this area for the Nation. We hope to be able to present these exciting plans to our kindred later.)

THE SECOND MAYFLOWER PILGRIMAGE in 1965. Your editor was on this trip, as were 63 other descendants. Highlights included visits in old Pilgrim Churches, homes, yes and even the same jail where some Pilgrims "spent time." Her Majesty, Juliana, Queen of the Netherlands invited us for a personal visit and tea. A full report of this exciting trip to be in the next newsletter.

PILGRIM CHURCHES in ENGLAND & HOLLAND

The PLANNED THIRD MAYFLOWER PILGRIMAGE; July 20, 1967 (This European trip to be explained in the next newsletter.

THE SOULE KINDRED IS FORMED

In 1620 the Mayflower landed: In 1894 the first Society of Mayflower Descendants was formed: The Alden Kindred of America was organized around 1902: Now in 1967, the Soules are getting around to formally organizing a Kindred. We might have been slow - but WE all have done a lot of other important things in the past 347 years, and being what we are, we shall get the job done...if everyone in the family helps. No offense is intended for those of you who do spell your name different, when we write "Soule Kindred" instead of "Soule-Sowle Kindred" etc. We simply are being expedient with time and space. Excuse us please!

§ WE NOTE that there have been in the past, at least 4 great Soule Reunions. One being in 1902 at Yarmouth, Maine, another in 1916 at Yarmouth, a third on August 15, 1936 in East Bridgewater, Mass., and a fourth also at East Bridgewater in the building and on the grounds of the A. R. Parker Co., Saturday, 10 September 1949. At this last Reunion, 117 members attended. We hope, with proper permission, to present material from these reunions in this newsletter. If there was some good organizing, a grand Soule Reunion could bring 1,000 of us together with no trouble.

§ Some of you are familiar with the other family associations, like the Aldens (who were neighbors of the Soules), Bartletts, Howlands, etc. We hope our Kindred will fall along similar lines. What we do & where the Soule Kindred goes, of course, is finally up to you and your support. The foregoing articles show you what is being done now. Not only do we hope this newsletter will furnish you all with vital & interesting historical data on our family, but we also hope to tell you what some of our great & huge family have done and are doing now, whether it be a battlefield medal in Viet Nam or a book published in New York.

§ One objective of the Kindred we hope will be: A PUBLICATION OF THE SOULE HISTORY - The last large scale publication, discussed some earlier on page 4, written by Rev. Gideon T. Ridlon, was published in 1926. Only 500 copies were made, and as incomplete as they are, the set of two volumes is worth 100 dollars now. Your editor spent this sum and 8 years searching for his set. We feel it is time to publish a new set (in more volumes than the original 2) and update them as best possible, certainly correcting known mistakes. A final volume might be added to this set which would be a sort of WHO's-WHO in the SOULE-SOWLE FAMILY, complete with pictures. Publishing such a set of books is a lot of work, and if it is to be successful, many Soules will have to express interest. Enough copies would have to be sold to make publication worthwhile. Anyone acquainted with the publication of books is invited to give us suggestions.

PLEASE FILL OUT THE ENCLOSED FORM - if you are or think you are a Soule relation. These are for the Kindred files and will help with future research work. Upon request, additional forms will be sent under no obligation, so that you might give us information on past generations. We hope to eventually get a page on every Soule-Sowle family that is or was.

YOU WILL NOT RECEIVE THE SECOND & FOLLOWING SOULE NEWSLETTERS; to be printed quarterly, UNLESS YOU REQUEST IT. This being a non-profit group, we wish only to send out the newsletter to those who want it. For this reason, we do not even furnish return envelopes - YOU must take the initiative!

To be on the newsletter mailing list, please send in a contribution of five (5.00) dollars. Send checks or money orders payable to "SOULE KINDRED"

P. O. Box 259, South Duxbury, Mass. 02374

Please give a complete address including ZIP CODE.

We realize that some Kindred, retired, etc., may not be able to afford this, and we do not want to deprive them of the newsletter if they are interested. Such individuals need only write a letter to us, and we shall send them the newsletter FREE.

YOU CAN HELP YOUR KINDRED by sending in names of other Soule-Sowle relations.

We have no way of knowing of Kindred with other names. You can also help by combing school, fraternal, city, etc. directories for additional Soules. We will check for duplication on our lists, and will mail out this first issue to new names.

NOTICE: We rely, at present, only on Mayflower Society membership as actual proof of descent from the Mayflower. May we help you fill out your papers?

NEEDED: Computer Programmer to set up a punch card & program for the Soule Kindred on every single Soule - both past & present. Do you have the skill needed?



The Mayflower Compact

Foundation Stone of American Liberty

THE FIRST DECLARATION OF THE PRINCIPLES OF AMERICAN FREEDOM

The Compact

In the Name of God, Amen. We whose names are underwritten, the loyal subjects of our dread sovereign Lord, King James, by the grace of God, of Great Britain, France and Ireland, King, Defender of the Faith, etc.,

Having undertaken, for the glory of God, and advancement of the Christian faith and honor of our King and Country, a voyage to plant the first colony in the northern parts of Virginia, do by these presents solemnly and mutually in the presence of God, and one of another, covenant and combine ourselves together into a civil body politic, for our better ordering and preservation and furtherance of the ends aforesaid; and by virtue hereof to enact, constitute and frame such just and equal laws, ordinances, acts, constitutions and offices, from time to time, as shall be thought most meet and convenient for the general good of the Colony: unto which we promise all due submission and obedience. *In witness whereof* we have hereunder subscribed our names at Cape Cod the 11 of November, in the year of the reign of our sovereign Lord, King James of England, France and Ireland the eighteenth, and of Scotland the fifty-fourth. Ano. Dom. 1620.

John Carver	William White	Edward Fuller	Gilbert Winslow
William Bradford	Richard Warren	John Turner	Edmond Margeson
Edward Winslow	John Howland	Francis Eaton	Peter Brown
William Brewster	Stephen Hopkins	James Chilton	Richard Britteridge
Isaac Allerton	Edward Tilly	John Crackston	George Soule
Myles Standish	John Tilly	John Billington	Richard Clarke
John Alden	Francis Cooke	Moses Fletcher	Richard Gardiner
Samuel Fuller	Thomas Rogers	John Goodman	John Allerton
Christopher Martin	Thomas Tinker	Degory Priest	Thomas English
William Mullins	John Rigdale	Thomas Williams	Edward Doty
			Edward Leister

November 21, 1620, the *Mayflower* anchored at Cape Cod, north of the limits of the Virginia Colony, and beyond any organized law. Some form of government was necessary. Those who intended to settle in America were divided into two groups: the religious exiles from England and Holland, and those who hoped to better themselves in a new land. Dangerous differences of opinion had arisen between the groups, which had to be reconciled if the small colony was to survive.

Much has been written to the memory of these Pilgrims; their suffering, privations, and undying courage, but little on the generosity of spirit and statesmanship expressed in the Compact. Let us analyze the inner-meaning of it:

"In the name of God, Amen!"

This expresses the deep faith of the Pilgrims in God, and their belief that God was with them and would guide them.

"— the loyal subjects of our dread sovereign Lord, King James."

The Pilgrims had been persecuted, imprisoned and exiled by the English Government. They had no reason to be loyal to this government, but fifty men could not oppose England, as three million Americans did successfully, a century and a half later, so they subscribed themselves "loyal subjects," which was statesmanship of high order.

"do by these presents solemnly and mutually in the presence of God, and one of another."

All men were declared equal in the sight of God, and freedom of religion was established in the Colony.

"to enact such just and equal laws — for the general good of the Colony."

All men were declared equal before the law, and a government of the people, by the people, and for the people was established for the first time in history, and endures to this day.

"unto which we promise all due submission and obedience."

The settlers lived up to the Compact, which they signed. It brought the divergent groups into one unified group, and the Compact remained as the Constitution of the Colony until Plymouth was merged into the Massachusetts Bay Colony in 1692 by order of King William.

